



**REEVES MEWS, MAYFAIR, W1K**  
£1,750 per week\*

**Carter Jonas**

# FLAT 4 PARK MOUNT LODGE, REEVES MEWS, MAYFAIR, LONDON, W1K

A two-bedroom apartment of approximately 1,222 square feet.

- Furnished
- 2 Bedrooms
- 1 Reception
- 2 Bathrooms
- Balcony

## THE PROPERTY

A lateral apartment situated on the second floor of this well-kept building located within walking distance of Hyde Park, shopping facilities and transport links. This bright apartment has been refurbished throughout and benefits from two private balconies.

Mayfair is London's most fashionable destination. With London's finest buildings, largest concentration of luxury hotels, best restaurants, bars, shopping, open spaces and hidden treasures all nestled together in a beautiful village setting.

Nearest Tube: Marble Arch / Bond Street

AST

The deposit will be £10,500 at a rental value of £1,855 per week (asking price)

Holding deposit = 1 weeks rent of £1,750 per week Rent is not payable weekly

Deposit is 6 weeks rent (£1,750per week = £10,500 deposit)



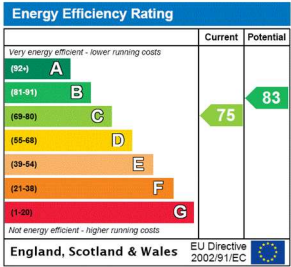
ADDITIONAL INFORMATION

Offers Available for a minimum term of 12 months longer terms will be considered

Viewing Strictly by appointment

Local Authority Westminster County Council - Council Tax Band G

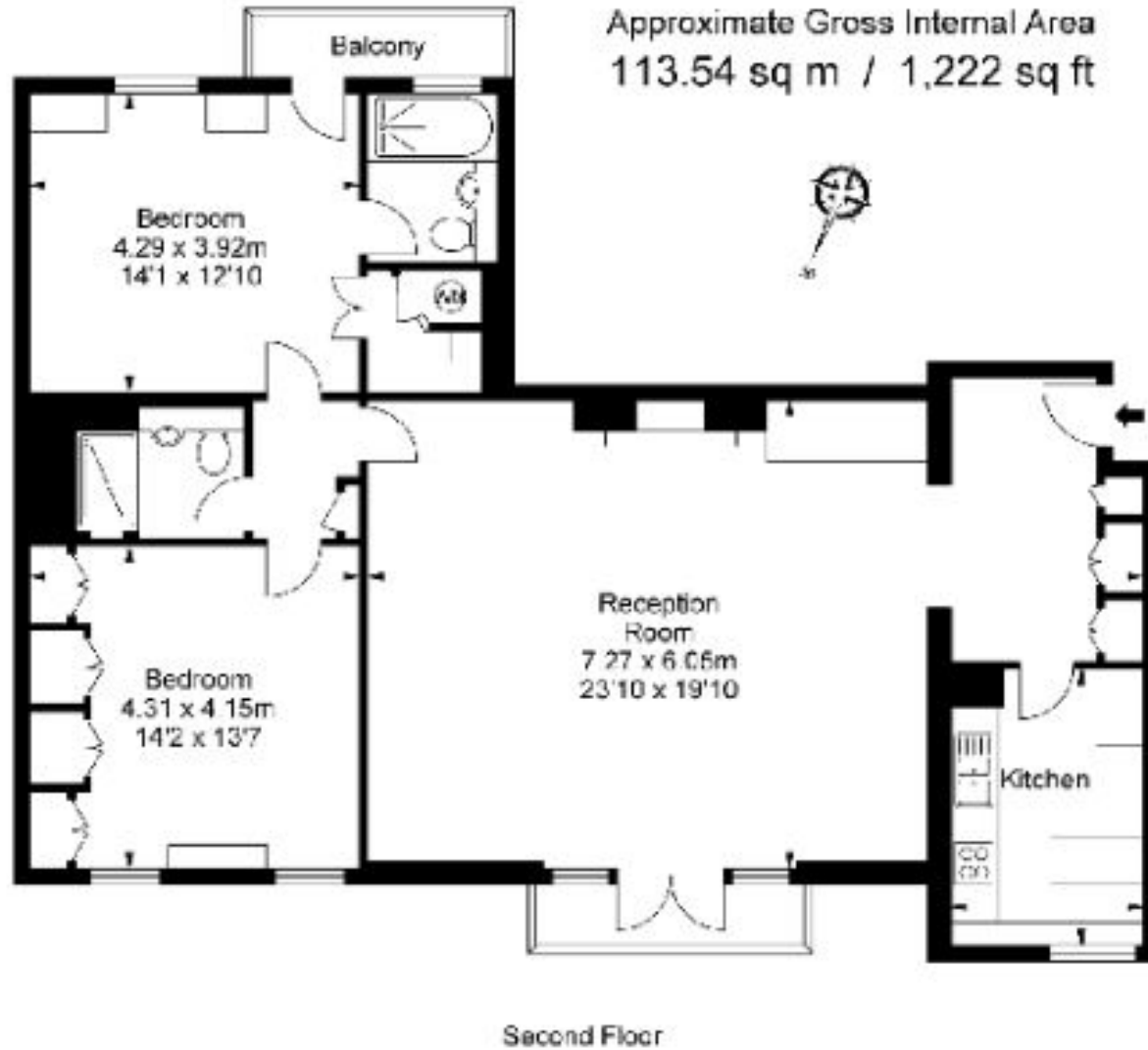
- Rent term 12 months minimum
- Council Tax: Band G (Local Authority: Westminster)
  - EPC: Rating C
  - Heating: Gas central heating
  - Mains water
  - Parking: On street parking / residents permit needed
  - Broadband: FTTC & ADSL Available. Up to 76 Mbps available





## Park Mount Lodge, W1K

Approximate Gross Internal Area  
113.54 sq m / 1,222 sq ft



T: 020 7493 0676

18 Davies Street, Mayfair, London, W1K 3DS

E: [mayfair@carterjonas.co.uk](mailto:mayfair@carterjonas.co.uk)

A member of



Exclusive UK affiliate of

**CHRISTIE'S**  
INTERNATIONAL REAL ESTATE

Classification L2 - Business Data

### IMPORTANT INFORMATION

These particulars are for general information purposes only and do not represent an offer or contract or part of one. Carter Jonas or anyone in their employment has made every attempt to ensure that the particulars and other information provided are as accurate as possible and they are not intended to amount to advice on which you should rely as being factually accurate. Full information which may be relevant to your decision regarding the property can be found on the property listing on [carterjonas.co.uk](http://carterjonas.co.uk) or a separately available material information sheet, and we would advise you to confirm the details of any material information prior to any offer being submitted. You should not assume that the property has all necessary planning, building regulations or other consents and Carter Jonas has not tested any services, facilities, or equipment. Any measurements and distances given are approximate only. Where Carter Jonas has been provided with a floorplan by a third party, we cannot guarantee that the floorplan has been measured in accordance with IPMS. Purchasers or prospective tenants must satisfy themselves of all of the aforementioned by independent inspection or otherwise. Our images only represent part of the property as it appeared at the time they were taken and do not represent the furnishings included; these are confirmed in a separate inventory. If you require further information, please contact us. \*Administration fees may apply depending on tenancy type. Please contact your local branch for this information.