



TACHBROOK STREET, PIMLICO, SW1V
£700,000

Carter Jonas

TACHBROOK STREET, SW1V

An immaculate recently renovated 4th & 5th floor duplex (with lift) with roof terrace. With three bedrooms and two bathrooms, this is a fantastic central London base and good rental investment. EPC rating: C

Forsyth House is part of a well maintained development located between Vauxhall Bridge Road and Tachbrook Street convenient for a wide variety of local amenities in Pimlico, Victoria and Westminster with easy access around the City and beyond.

Reception, kitchen/dining room, 2 double bedrooms, single bedroom, en-suite shower room, bathroom, roof terrace. Lift.
Sole agent

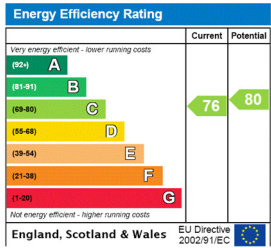
Leasehold - approximately 82 years remaining
Service charge - £5,286 p.a. (2025/26)
Ground rent - £10 p.a.

Communal heating is £1,756 of the £5,286 service charge (2025/26)

Westminster City Council - Council tax D

For the latest information on broadband and mobile coverage, please visit the Ofcom website <https://checker.ofcom.org.uk/en-gb/broadband-coverage> for the most up-to-date details.

For eligibility for resident parking permits, please refer to the Westminster council website <https://www.westminster.gov.uk/parking> website for further details.



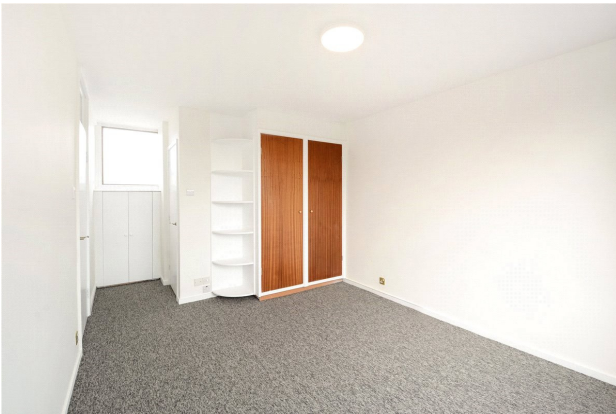
AMENITIES

- Penthouse
- Lift access
- 3 Bedrooms
- 2 Bathrooms
- Roof terrace
- Leasehold
- Closest train/underground stations: Victoria & Pimlico

TENURE Leasehold

LOCAL AUTHORITY Westminster City Council

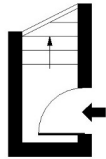
EPC BAND C





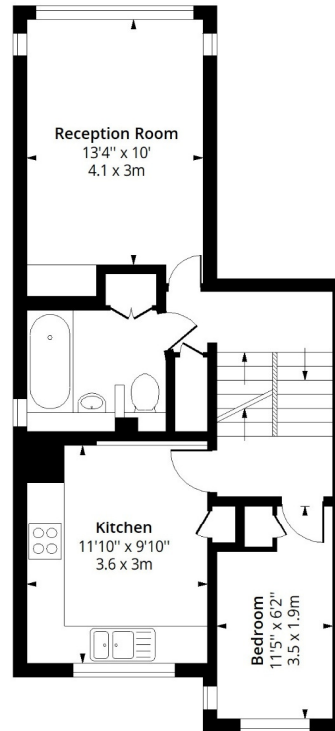
Forsyth House, SW1V

Approx. Gross Internal Area 886 Sq Ft - 82.45 Sq M
Approx. Gross Roof Terrace Area 192 Sq Ft - 17.84 Sq M



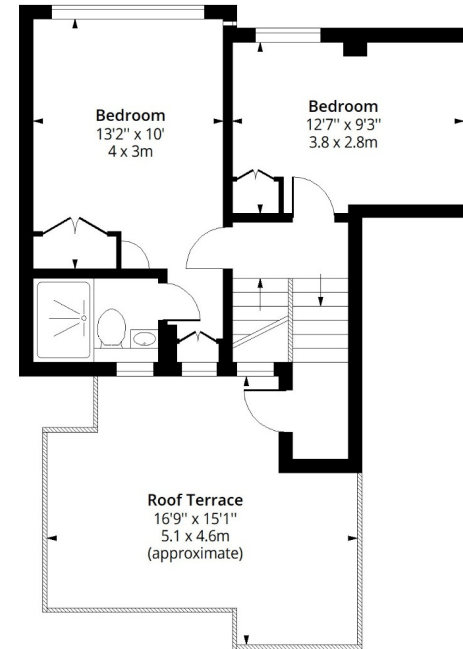
Third Floor Entrance

Floor Area 20 Sq Ft - 1.86 Sq M



Fourth Floor

Floor Area 489 Sq Ft - 45.43 Sq M



Fifth Floor

Floor Area 377 Sq Ft - 35.02 Sq M



Measured according to RICS IPMS2. Floor plan is for illustrative purposes only and is not to scale. Every attempt has been made to ensure the accuracy of the floor plan shown, however all measurements, fixtures, fittings and data shown are an approximate interpretation for illustrative purposes only. 1 sq m = 10.76 sq feet.

lpaplus.com

Date: 19/7/2023

Kensington & Chelsea 020 7584 7020

chelsea@carterjonas.co.uk
25-27 Harrington Road, London, SW7 3EU

carterjonas.co.uk
Offices throughout the UK

Exclusive UK affiliate of

CHRISTIE'S
INTERNATIONAL REAL ESTATE

IMPORTANT INFORMATION

These particulars are for general information purposes only and do not represent an offer or contract or part of one. Carter Jonas or anyone in their employment has made every attempt to ensure that the particulars and other information provided are as accurate as possible and they are not intended to amount to advice on which you should rely as being factually accurate. Full information which may be relevant to your decision regarding the property can be found on the property listing on carterjonas.co.uk or, (including off market properties) on the brochure or a separately available material information sheet. We would advise you to confirm the details of any material information prior to any offer being submitted. You should not assume that the property has all necessary planning, building regulations or other consents and Carter Jonas has not tested any services, facilities or equipment. Any measurements and distances given are approximate only. Where Carter Jonas has been provided with a floorplan by a third party, we cannot guarantee that the floorplan has been measured in accordance with IPMS. Purchasers must satisfy themselves of all of the aforementioned by independent inspection or otherwise. Our images only represent part of the property as it appeared at the time they were taken and do not represent the furnishings included; these are confirmed in a separate inventory. If you require further information, please contact us.