



**DEVONSHIRE MEWS SOUTH, LONDON, W1G**  
£1,500 per week\*

**Carter Jonas**



## 1ST AND 2ND FLOOR, DEVONSHIRE MEWS SOUTH, LONDON, W1G 6QS

- Stunning Mews house in the Village
- Two double bedrooms
- Two bathrooms
- Spacious reception room
- Modern kitchen
- Unfurnished or furnished at additional cost

### THE PROPERTY

This beautifully presented property offers exceptional natural light throughout, benefitting from windows at both the front and rear.

The ground floor features a spacious reception room with hardwood flooring, flowing seamlessly into an impressive fully fitted kitchen with a dedicated dining area. Upstairs, there are two well-proportioned double bedrooms and two contemporary bathrooms.

Available on an unfurnished basis. Furniture can be arranged by separate negotiation.

Devonshire Mews South is superbly positioned for the boutiques and restaurants of Marylebone High Street, the open spaces of Regent's Park, and excellent transport links via nearby Baker Street, Bond Street and Great Portland Street stations.

Holding deposit is 1 week's rent = £1,500 (at asking price)

Security deposit is 6 weeks rent = £9,000 (at asking price)

Minimum term 12 months

Council Tax Band G

For the latest information on broadband and mobile coverage, please visit [checker.ofcom](https://checker.ofcom.gov.uk/) for the most up-to-date details.

A stunning two-bedroom mews property of 1248 sq. ft. located on one of Marylebone's prettiest mews streets in a sought-after location in the heart of Marylebone Village.





## ADDITIONAL INFORMATION

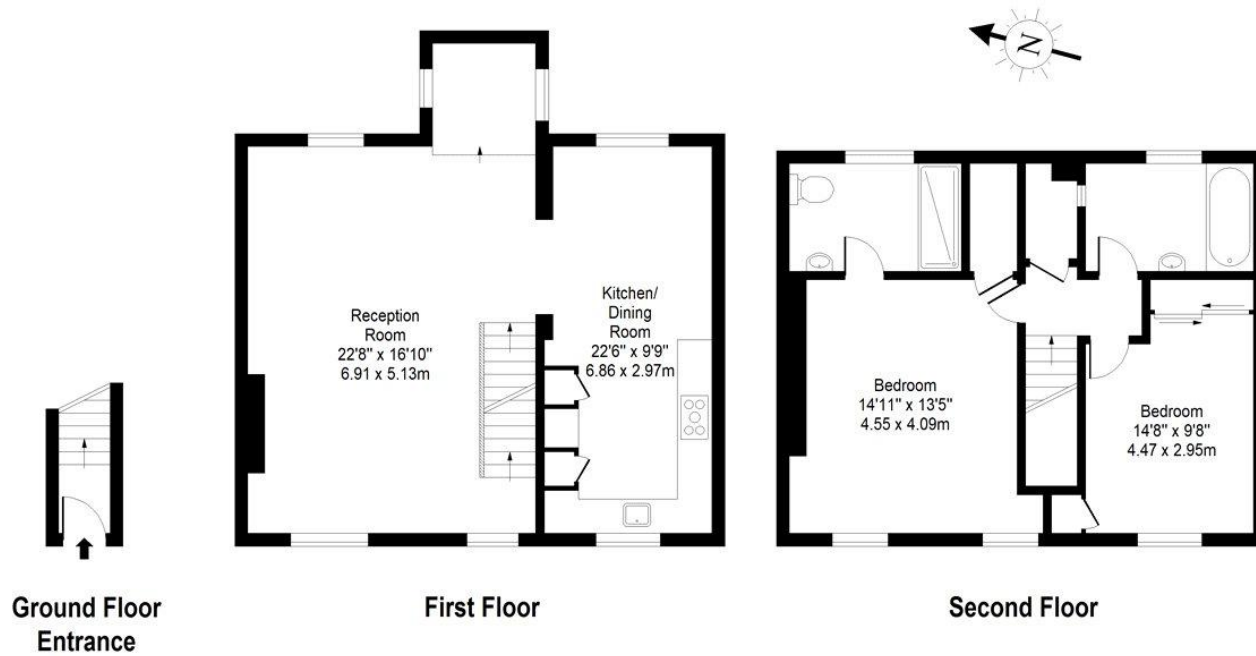
Offers Available for a minimum term of 12 months longer terms will be considered

Viewing Strictly by appointment

Local Authority Westminster City Council - Council Tax Band G



## DEVONSHIRE MEWS SOUTH



Approx. Gross Internal Area 1248 Sq Ft - 115.94 Sq M  
For Illustrative Purposes Only - Not To Scale



**T: 020 7486 8866**

37 New Cavendish Street, London, W1G 9TL

E: [marylebone.lettings@carterjonas.co.uk](mailto:marylebone.lettings@carterjonas.co.uk)

A member of



*Exclusive UK affiliate of*

**CHRISTIE'S**  
INTERNATIONAL REAL ESTATE

Classification L2 - Business Data

### IMPORTANT INFORMATION

These particulars are for general information purposes only and do not represent an offer or contract or part of one. Carter Jonas or anyone in their employment has made every attempt to ensure that the particulars and other information provided are as accurate as possible and they are not intended to amount to advice on which you should rely as being factually accurate. Full information which may be relevant to your decision regarding the property can be found on the property listing on [carterjonas.co.uk](http://carterjonas.co.uk) or a separately available material information sheet, and we would advise you to confirm the details of any material information prior to any offer being submitted. You should not assume that the property has all necessary planning, building regulations or other consents and Carter Jonas has not tested any services, facilities, or equipment. Any measurements and distances given are approximate only. Where Carter Jonas has been provided with a floorplan by a third party, we cannot guarantee that the floorplan has been measured in accordance with IPMS. Purchasers or prospective tenants must satisfy themselves of all of the aforementioned by independent inspection or otherwise. Our images only represent part of the property as it appeared at the time they were taken and do not represent the furnishings included; these are confirmed in a separate inventory. If you require further information, please contact us. \*Administration fees may apply depending on tenancy type. Please contact your local branch for this information.