



**126 STOCKBRIDGE ROAD**  
Winchester, Hampshire, SO22 6RN

**Carter Jonas**

## 126 STOCKBRIDGE ROAD, WINCHESTER, HAMPSHIRE, SO22 6RN

- One bedroom
- Open plan kitchen/sitting room
- City centre location
- 0.3 miles from train station
- Private parking
- Awaiting EPC

### DESCRIPTION

A charming one-bedroom ground floor apartment which has recently been extensively refurbished and redesigned. The accommodation comprises a contemporary open plan kitchen with wood effect flooring, a range of base and eye level units and integrated appliances. The kitchen opens out into a delightful dining / sitting room area with windows to the front, and space for a dining table and sofas. The accommodation is completed by a double bedroom with stylish en suite bathroom containing a shower over the bath, along with a separate w/c.

### OUTSIDE

The property benefits from an unallocated parking space to the front, along with an additional unallocated parking space located to the rear, beyond the fence of the rear parking.

## MODERN REFURBISHED GROUND FLOOR ONE-BEDROOM APARTMENT WITH EXCLUSIVE PARKING ON STOCKBRIDGE ROAD



## LOCATION

Situated in the desirable area of Fulflood with its mix of Victorian and Edwardian houses, this property is within easy access to Winchester city centre with its many restaurants, cafes and bars as well as other facilities such as shops, cinema, theatres and library. Winchester mainline station is within 0.3 miles with regular trains to London Waterloo (approximately 1 hour).

## ADDITIONAL INFORMATION

**Tenure:** Leasehold to be granted, lease will be 125 years upon completion

**Lease restrictions:** Restrictions apply - cannot be used as a holiday let

**Service Charge:** £1083.00 (estimate) PLM Childrens Trust for managements of communal areas of the premises

**Services:** Mains electricity, water and drainage. Electric heating.

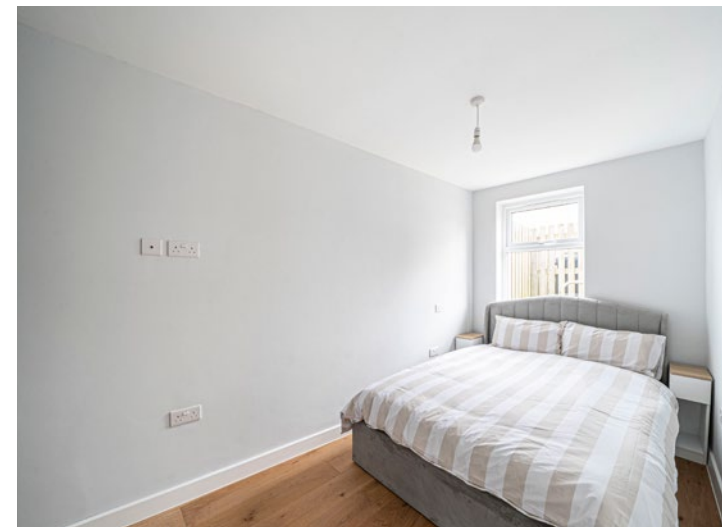
**Local Authority:** Winchester City Council

**Council Tax:** Band TBC

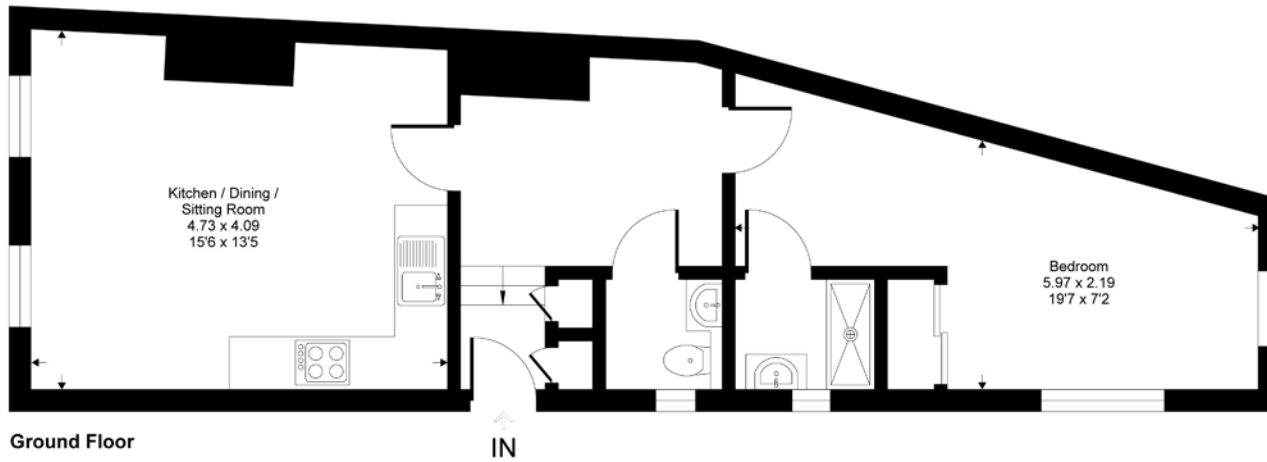
**Broadband:** Fibre to the Cabinet (FTTC). For

internet and mobile services check Ofcom's website.

**Viewings:** Strictly by appointment through the agent, Carter Jonas. 01962 842742



**Stockbridge Road, SO22**  
Approximate Gross Internal Area = 47.5 sq m / 512 sq ft



Ground Floor

This floor plan is for representation purposes only as defined by the RICS code of Measuring Practice (and IPMS where requested) and should be used as such by any prospective purchaser. Whilst every attempt has been made to ensure the accuracy contained here, the measurement of doors, windows and rooms is approximate and no responsibility is taken for any error, omission or mis-statement. Specifically no guarantee is given on the total area of the property if quoted on the plan. Any figure provided is for guidance only and should not be used for valuation purposes.  
Produced for Carter Jonas



Office 019620842742

winchester@carterjonas.co.uk

9a Jewry Street, Winchester, Hampshire, SO23 8RZ

[carterjonas.co.uk](http://carterjonas.co.uk)

Offices throughout the UK

Exclusive UK affiliate of

**CHRISTIE'S**  
INTERNATIONAL REAL ESTATE

**IMPORTANT INFORMATION**

These particulars are for general information purposes only and do not represent an offer of contract or part of one. Carter Jonas has made every attempt to ensure that the particulars and other information provided are as accurate as possible and are not intended to amount to advice on which you should rely as being factually accurate. You should not assume that the property has all necessary planning, building regulations or other consents and Carter Jonas have not tested any services, facilities or equipment. Any measurements and distances given are approximate only. Purchasers must satisfy themselves of all of the aforementioned by independent inspection or otherwise. Although we make reasonable efforts to update our information, neither Carter Jonas LLP nor anyone in its employment or acting on its behalf makes any representations warranties or guarantees, whether express or implied, in relation to the property, or that the content in these particulars is accurate, complete or up to date. Our images only represent part of the property as it appeared at the time they were taken. If you require further information please contact us.