



**Kipling Close**  
Stockport

**Carter Jonas**

## 6 KIPLING CLOSE STOCKPORT SK2 5HS

Split level property · Three Bedrooms  
Three Reception Rooms · Kitchen  
Garage · Gardens · Off street parking

### ACCOMMODATION

Sitting room with central fireplace with surround and mantelpiece, with a door into a study.

Dining room opening into the kitchen with a range of modern cabinets finished in white with contrasting tops, an integrated oven, hob, and extractor.

Three bedrooms and a bathroom with a modern white suite.

The property is complimented by gardens, a garage and parking.

### FURTHER INFORMATION

Mains gas, electricity and water.

The property is in a coal mining reporting area.

Internet & mobile coverage: further information on availability and speeds can be found at [checker.ofcom.org.uk](https://checker.ofcom.org.uk)

Council Tax Band E  
EPC Rating C

Photographs taken in 2024

## A THREE BEDROOM DETACHED SPLIT-LEVEL PROPERTY WITH THREE RECEPTION ROOMS LOCATED IN A CUL-DE-SAC WITHIN THE POPULAR AREA OF OFFERTON



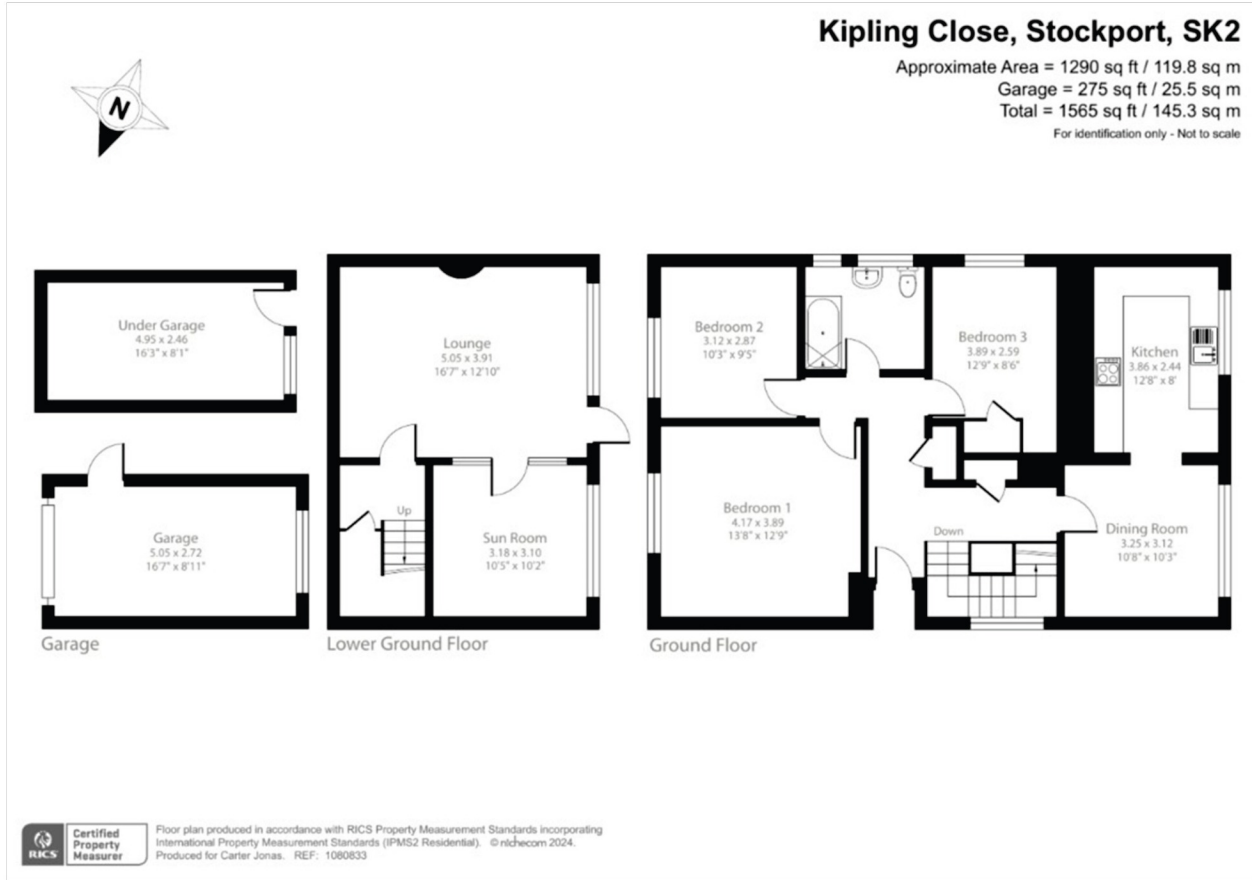
## ADDITIONAL INFORMATION

**Viewing:** Strictly by appointment through the selling agents Carter Jonas - T: 01865 511444

**Directions:** SK2 5HS

what3words:/// career.buzz.range





Energy Efficiency Rating		Current	Potential
Very energy efficient - lower running costs			
(92+)	A		
(81-91)	B		82
(69-80)	C	70	
(55-68)	D		
(39-54)	E		
(21-38)	F		
(1-20)	G		
Not energy efficient - higher running costs			
England, Scotland & Wales		EU Directive 2002/91/EC	

**Oxford 01865 511444**  
 oxford@carterjonas.co.uk  
 Mayfield House, 256 Banbury Road, Oxford. OX2 7DE

**carterjonas.co.uk**  
 Offices throughout the UK



**IMPORTANT INFORMATION**  
 These particulars are for general information purposes only and do not represent an offer or contract or part of one. Carter Jonas or anyone in their employment has made every attempt to ensure that the particulars and other information provided are as accurate as possible and they are not intended to amount to advice on which you should rely as being factually accurate. Full information which may be relevant to your decision regarding the property can be found on the property listing on [carterjonas.co.uk](http://carterjonas.co.uk) or, (including off market properties) on the brochure or a separately available material information sheet. We would advise you to confirm the details of any material information prior to any offer being submitted. You should not assume that the property has all necessary planning, building regulations or other consents and Carter Jonas has not tested any services, facilities or equipment. Any measurements and distances given are approximate only. Where Carter Jonas has been provided with a floorplan by a third party, we cannot guarantee that the floorplan has been measured in accordance with IPMS. Purchasers must satisfy themselves of all of the aforementioned by independent inspection or otherwise. Our images only represent part of the property as it appeared at the time they were taken and do not represent the furnishings included; these are confirmed in a separate inventory. If you require further information, please contact us.