



87 VICTORIA BRIDGE ROAD, BATH, BA2 3FL
£1,350 per month*

Carter Jonas

A modern, furnished one bedroom apartment in the Bath Riverside development.

- Open plan Kitchen/living room
- Bedroom
- Bathroom

THE PROPERTY

A modern, furnished one bedroom apartment in the Bath Riverside development. The living space is spacious and kitchen is well-equipped with fridge/freezer, oven with hob and dishwasher. The living room has double doors looking out onto the communal garden allowing light and a lovely feel to the property. Through the hallway, which is host to the utilities cupboard as well as bathroom with shower over bath, is the double bedroom. The bedroom would comfortably fit a double bed and is perfect for a professional individual or couple. The Bath Riverside development is extremely convenient for those wanting to be in and around the city centre with buses frequently running into the city as well as the convenience of around a 15 minute walk to the centre.

Offered part furnished to include bed, sofa, chest of drawers, kitchen table and chairs. Available May 2026.

EPC Rating B. Council Tax Band B (please see Bath & North East Somerset website for current cost)

Mains electric, and metered mains water.

Communal boilers run by EON (supplier cannot be changed).

No Parking available for this flat.

Internet & Mobile: Further information on availability and speeds can be found on the Ofcom website.

At a rent of £1350.00 per calendar month: Holding deposit of 1 week's rent £342.78 (deducted from first month's rent) Security deposit of 5 weeks rent £1713.94



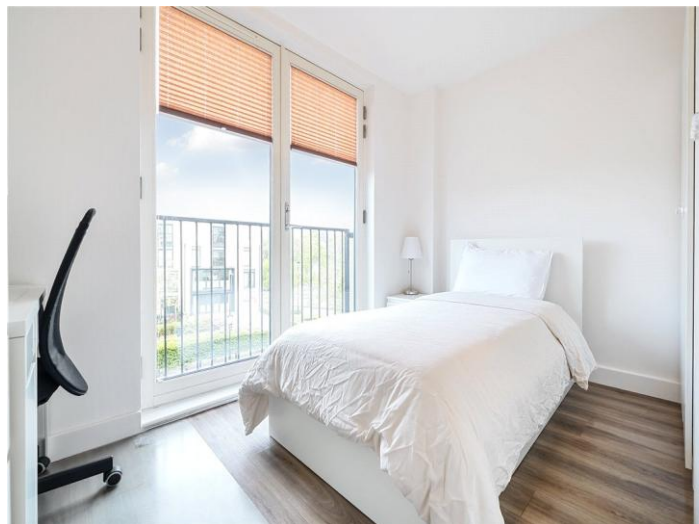
ADDITIONAL INFORMATION

Offers Available for a minimum term of 12 months longer terms will be considered

Viewing Strictly by appointment

Local Authority - Council Tax Band B

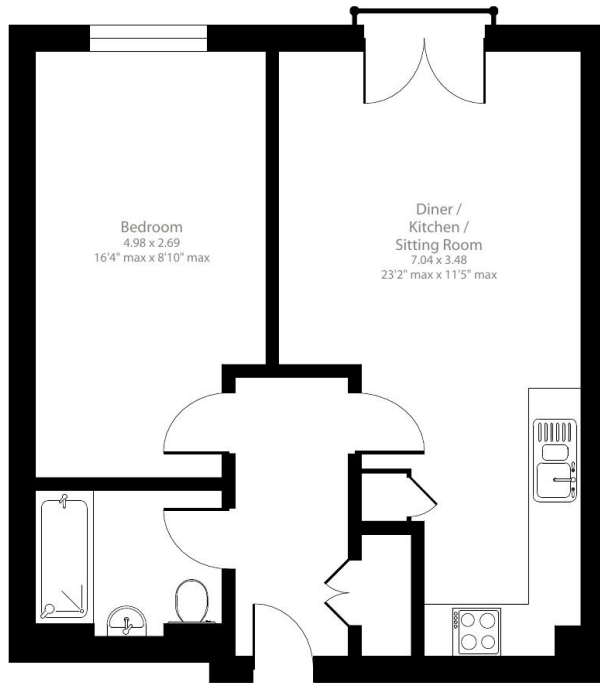
Directions



Victoria Bridge Road, Bath, BA2

Approximate Area = 478 sq ft / 44.4 sq m

For identification only - Not to scale



Second Floor



Floor plan produced in accordance with RICS Property Measurement 2nd Edition, Incorporating International Property Measurement Standards (IPMS2 Residential). © nlcocom 2025. Produced for Carter Jonas. REF: 1272284

Score	Energy rating	Current	Potential
92+	A		
81-91	B		
69-80	C	← B1 B	← B1 B
55-68	D		
39-54	E		
21-38	F		
1-20	G		

T: 01225 747250
5-6 Wood Street, Bath, Somerset, BA1 2JQ
E: bath.enquiries@carterjonas.co.uk



Exclusive UK affiliate of

CHRISTIE'S
INTERNATIONAL REAL ESTATE

Classification L2 - Business Data

IMPORTANT INFORMATION

These particulars are for general information purposes only and do not represent an offer or contract or part of one. Carter Jonas or anyone in their employment has made every attempt to ensure that the particulars and other information provided are as accurate as possible and they are not intended to amount to advice on which you should rely as being factually accurate. Full information which may be relevant to your decision regarding the property can be found on the property listing on carterjonas.co.uk or a separately available material information sheet, and we would advise you to confirm the details of any material information prior to any offer being submitted. You should not assume that the property has all necessary planning, building regulations or other consents and Carter Jonas has not tested any services, facilities, or equipment. Any measurements and distances given are approximate only. Where Carter Jonas has been provided with a floorplan by a third party, we cannot guarantee that the floorplan has been measured in accordance with IPMS. Purchasers or prospective tenants must satisfy themselves of all of the aforementioned by independent inspection or otherwise. Our images only represent part of the property as it appeared at the time they were taken and do not represent the furnishings included; these are confirmed in a separate inventory. If you require further information, please contact us. *Administration fees may apply depending on tenancy type. Please contact your local branch for this information.