



31 CARPENTERS CLOSE
Guide Price £250,000

Carter Jonas

31 CARPENTERS CLOSE NEWBURY RG14 5BU

- Newbury town and mainline station 0.6 miles
- M4 (J13) 4 miles

Separate kitchen with integrated appliances · 2 double bedrooms, main with en suite · private balcony · communal garden · 2 allocated parking spaces and visitors parking · Energy Rating B

SITUATION

Newbury town offers a good selection of shops and supermarkets. There are plenty of restaurants, cafés, public houses and leisure facilities, including Newbury Racecourse, the attractive Kennet & Avon canal, Vue cinema, Corn Exchange and Watermill theatres. There are arts and sports centres, health and golf clubs, a bowls club, museums and an outdoor market on Thursdays and Saturdays. There are well regarded schools for all age groups and Newbury College, with its campus to the south of the town. There is excellent access to the major road routes of A34 and M4 and the mainline rail station to London (Paddington).

DESCRIPTION

This immaculately presented property consists of a secure communal entrance and is located on the second floor in this tucked away location. Entering the property through a generous open entrance hall, with loft access, this apartment has a double bedroom and a main bedroom with en-suite shower room and fitted wardrobes. The living/dining room is finished to a good standard and is modern throughout, leading onto a private west facing balcony. Inside the kitchen the property includes integrated appliances and white goods throughout, along with a family bathroom completing the property.

A BEAUTIFULLY PRESENTED TOP-FLOOR APARTMENT WITH WEST FACING BALCONY, 2 PARKING SPACES AND LOCATED CONVENIENTLY TO NEWBURY TOWN CENTRE AND TRAIN STATION. VIEWING HIGHLY RECOMMENDED.



OUTSIDE

The property benefits from a west facing balcony and two allocated parking spaces along with additional visitors parking available.

ADDITIONAL INFORMATION

Tenure: Leasehold – 125 years from 20th February 2016

Ground rent £100 every six months. Service charge £1047 every six months.

Services: All mains services connected including gas fired central heating

Local Authority: West Berkshire Council – 01635 551111

Council Tax: Band C

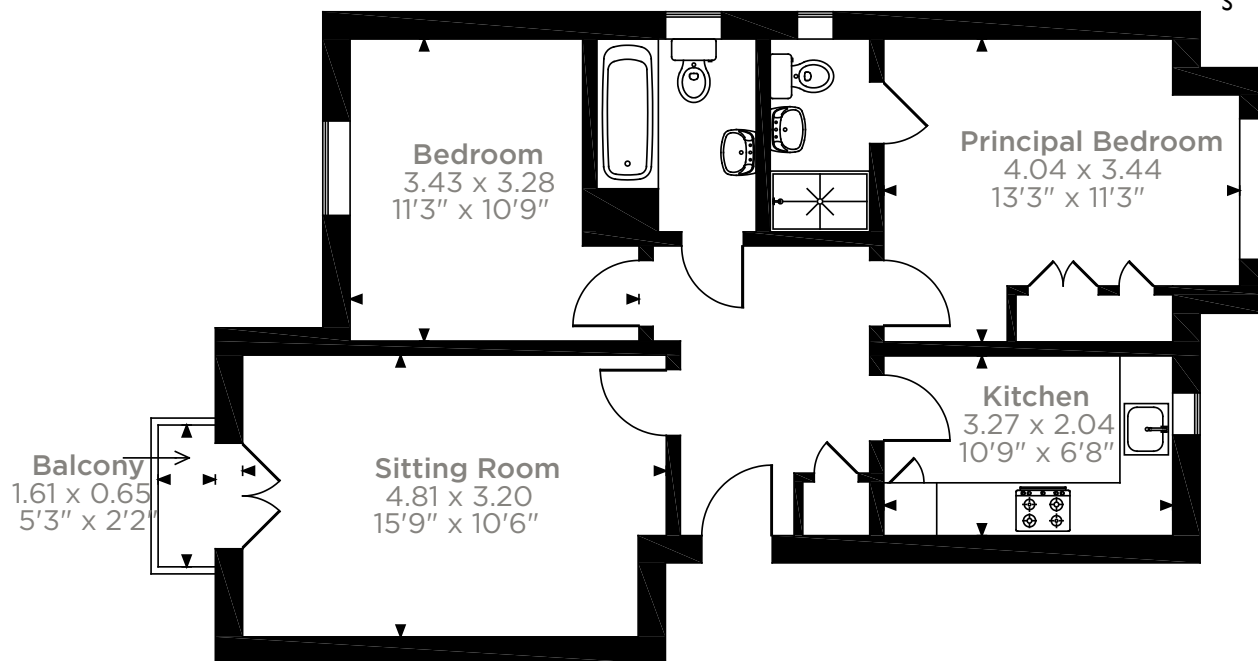
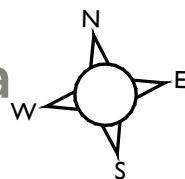
Viewing: By prior appointment through the Newbury office 01635 263010

Directions: Please use post code RG14 5BU



31 Carpenters Close, Newbury

Approximate Gross Internal Area 62 Sq M/667 Sq Ft



Second Floor Flat

Please note that the location of doors, windows and other items are approximate and this floorplan is to be used for illustrative purposes only. Unauthorized reproduction is prohibited.



Score	Energy rating	Current	Potential
92+	A		
81-91	B	81 B	81 B
69-80	C		
55-68	D		
39-54	E		
21-38	F		
1-20	G		

Newbury 01635 263000

newbury@carterjonas.co.uk

51 Northbrook Street, Newbury, RG14 1DT

carterjonas.co.uk

Offices throughout the UK

Exclusive UK affiliate of

CHRISTIE'S
INTERNATIONAL REAL ESTATE

IMPORTANT INFORMATION

These particulars are for general information purposes only and do not represent an offer of contract or part of one. Carter Jonas has made every attempt to ensure that the particulars and other information provided are as accurate as possible and are not intended to amount to advice on which you should rely as being factually accurate. You should not assume that the property has all necessary planning, building regulations or other consents and Carter Jonas have not tested any services, facilities or equipment. Any measurements and distances given are approximate only. Purchasers must satisfy themselves of all of the aforementioned by independent inspection or otherwise. Although we make reasonable efforts to update our information, neither Carter Jonas LLP nor anyone in its employment or acting on its behalf makes any representations warranties or guarantees, whether express or implied, in relation to the property, or that the content in these particulars is accurate, complete or up to date. Our images only represent part of the property as it appeared at the time they were taken. If you require further information please contact us.