



**CHESTERFIELD HOUSE, CHESTERFIELD GARDENS, W1J**

£1,100 per week\*

**Carter Jonas**

---

# CHESTERFIELD HOUSE, CHESTERFIELD GARDENS, MAYFAIR, LONDON, W1J

## LOCATION

Mayfair is London's most fashionable destination. With London's finest buildings, largest concentration of luxury hotels, best restaurants, bars, shopping, open spaces and hidden treasures all nestled together in a beautiful village setting.

Nearest Tube: Green Park / Hyde Park Corner.

## THE PROPERTY

Situated on the fourth floor of a well kept period building with lift and porter ideally located within walking distance of Hyde Park, transport links and the facilities of Shepherd Market. The apartment has been finished in a traditional style and benefits from good storage.

## APT

The deposit will be £37,500 at a rental value of £1,100 per week (asking price)

Holding deposit = 1 weeks rent of £1,100 per week

Deposit is 6 weeks rent (£1,100 per week = £6,600 deposit)

Heating & Hot Water: Communal (Flat rate charging)

For the latest information on broadband and mobile coverage, please visit the Ofcom website <https://checker.ofcom.org.uk/en-gb/broadband-coverage>.

A bright two bedroom apartment of approximately 968 square feet.



## ADDITIONAL INFORMATION

Offers Available for a minimum term of 12 months longer terms will be considered

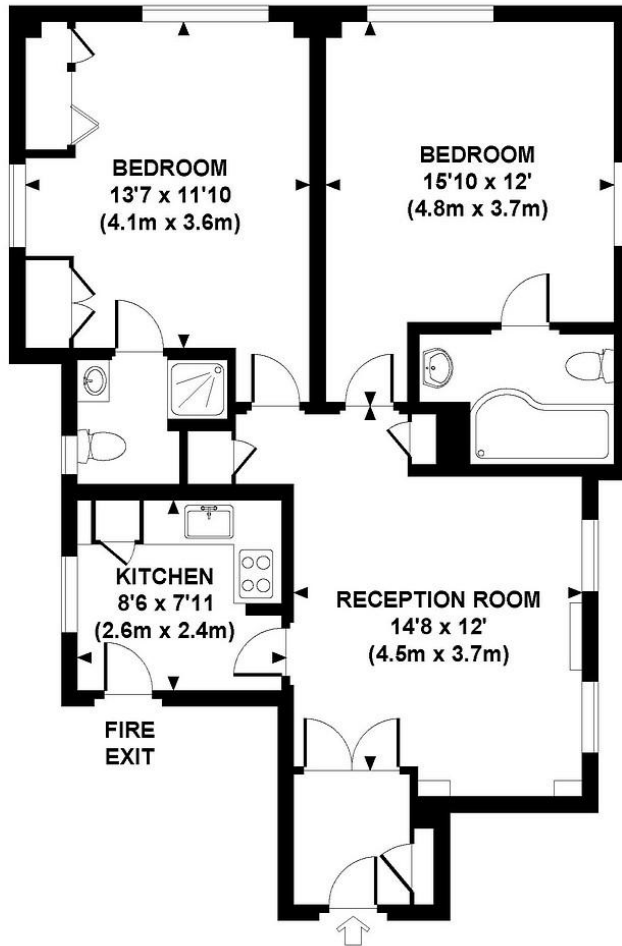
Viewing Strictly by appointment

Local Authority Westminster City Council - Council Tax Band G



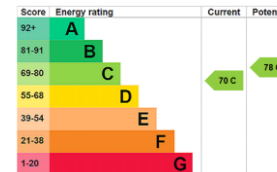
# CHESTERFIELD GARDENS, W1

Approx. gross internal area  
718 Sq.Ft. / 66.7 Sq.M.



FOURTH FLOOR

All measurements are approximate and for illustration purposes only as defined by the RICS Code of Measuring Practice © 2013  
Dowling Jones Design www.dowlingjones.com 020 7610 9933



T: 020 7493 0676

18 Davies Street, Mayfair, London, W1K 3DS

E: mayfair.lettings@carterjonas.co.uk



Exclusive UK affiliate of

**CHRISTIE'S**  
INTERNATIONAL REAL ESTATE

Classification L2 - Business Data

## IMPORTANT INFORMATION

These particulars are for general information purposes only and do not represent an offer or contract or part of one. Carter Jonas or anyone in their employment has made every attempt to ensure that the particulars and other information provided are as accurate as possible and they are not intended to amount to advice on which you should rely as being factually accurate. Full information which may be relevant to your decision regarding the property can be found on the property listing on [carterjonas.co.uk](http://carterjonas.co.uk) or a separately available material information sheet, and we would advise you to confirm the details of any material information prior to any offer being submitted. You should not assume that the property has all necessary planning, building regulations or other consents and Carter Jonas has not tested any services, facilities, or equipment. Any measurements and distances given are approximate only. Where Carter Jonas has been provided with a floorplan by a third party, we cannot guarantee that the floorplan has been measured in accordance with IPMS. Purchasers or prospective tenants must satisfy themselves of all of the aforementioned by independent inspection or otherwise. Our images only represent part of the property as it appeared at the time they were taken and do not represent the furnishings included; these are confirmed in a separate inventory. If you require further information, please contact us. \*Administration fees may apply depending on tenancy type. Please contact your local branch for this information.