



**WEYMOUTH STREET, MARYLEBONE, W1W**

£1,000 per week\*

**Carter Jonas**

# WEYMOUTH STREET, MARYLEBONE, LONDON, W1W 5BX

Contemporary one bedroom, one bathroom ground floor apartment situated in a popular portered block in Marylebone Village.

- Double Bedroom
- Bathroom
- Reception Room
- Lift
- 24 Hour Concierge
- Porter Service
- Rent is Exclusive of bills.

## THE PROPERTY

The property comprises open plan kitchen/reception, master bedroom with ensuite and benefits from wooden flooring, air conditioning and 24 hour building security.

Rent is Exclusive of bills.

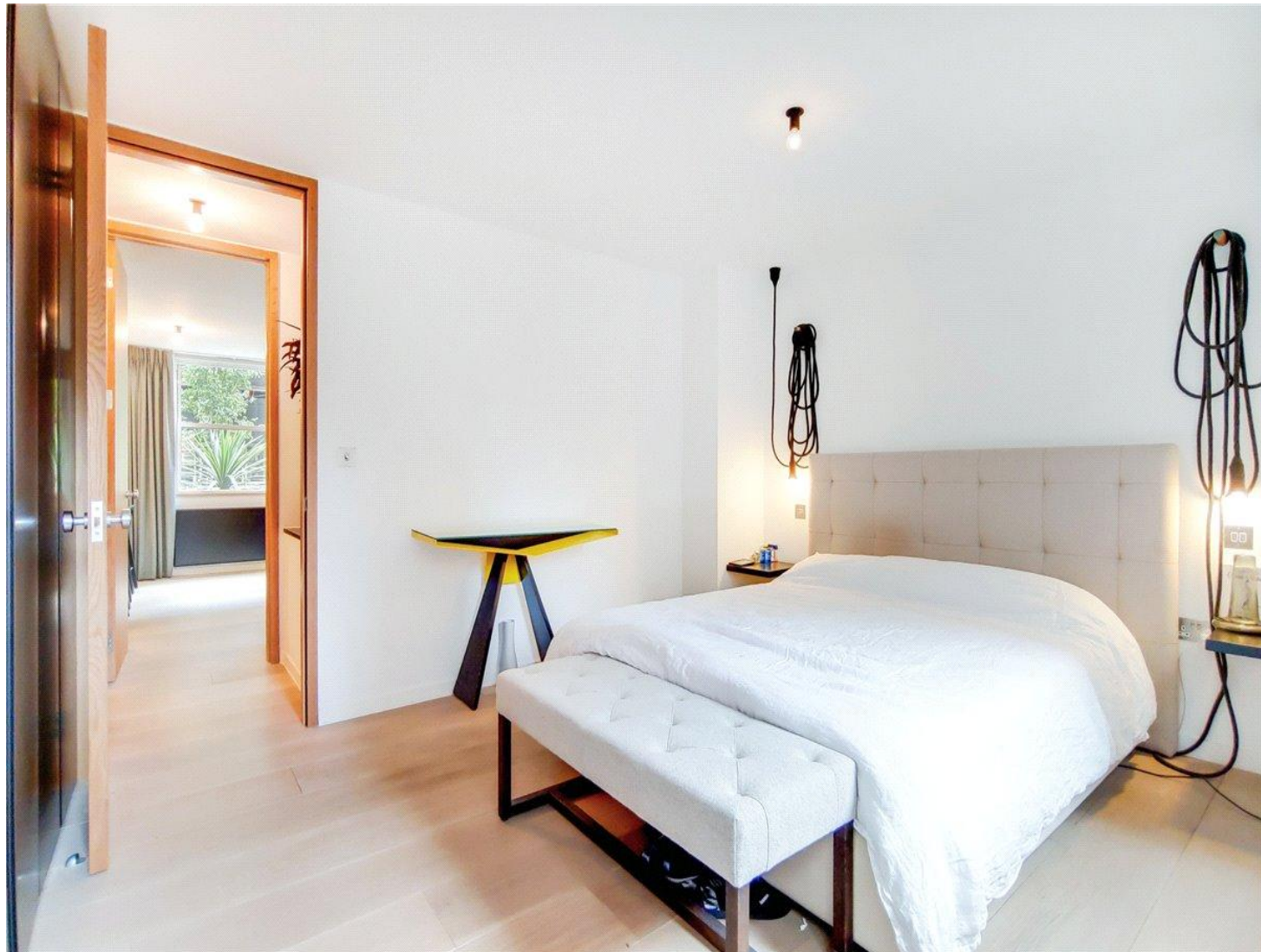
Within the Marylebone district of London, Weymouth Street is a pleasant and vibrant street. The street is well known for its selection of independent stores, cafes, and luxury restaurants, making it a desirable location for both locals and tourists. Excellent transportation options include the neighbouring Marylebone (about 1.1 miles), Euston (about 0.7 miles), Regent's Park (about 0.4 miles), Oxford Circus (about 0.4 miles), and Great Portland Street (about 0.3 miles) underground stations, as well as access to the West and Heathrow via the A40

Marylebone still looks and feels something like the village it was 400 years ago and the handsome Georgian development it was 250 years ago. Its High Street in particular is a pleasure to visit; the atmosphere is a bit more cosmopolitan than other parts of the city, and at the same time, a little more relaxed. A pristine haven a short walk from Oxford Circus filled with squares of tall, beautifully proportioned Georgian houses.

Holding deposit is 1 week's rent = £1,000 (at asking price)

Security deposit is 5 week's rent = £5,000 (at asking price £1,000pw)


Council Tax Band E

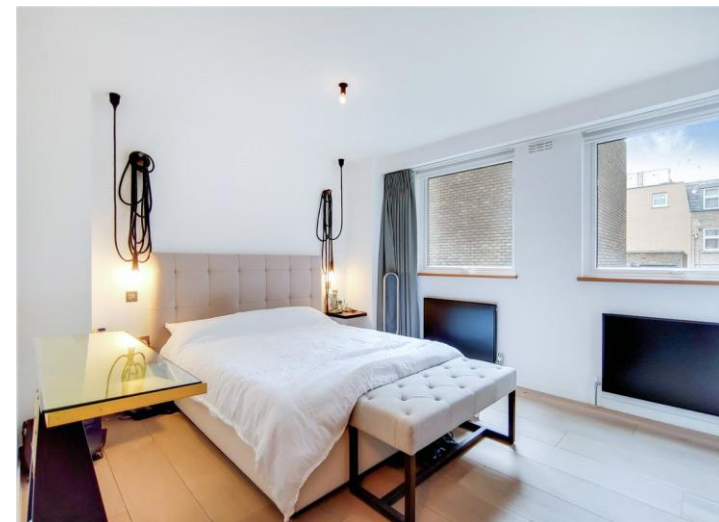


For the latest information on broadband and mobile coverage, please visit [checker.ofcom](http://checker.ofcom) for the most up-to-date details.

## ADDITIONAL INFORMATION

Offers	Available for a minimum term of 12 months longer terms will be considered
Viewing	Strictly by appointment
Local Authority	City of Westminster - Selective Licences - Council Tax Band E

Energy Efficiency Rating		
	Current	Potential
Very energy efficient - lower running costs		
(92+) <b>A</b>		
(81-91) <b>B</b>		
(69-80) <b>C</b>	<b>80</b>	<b>80</b>
(55-68) <b>D</b>		
(39-54) <b>E</b>		
(21-38) <b>F</b>		
(1-20) <b>G</b>		
Not energy efficient - higher running costs		
<b>England, Scotland &amp; Wales</b>	EU Directive 2002/91/EC	



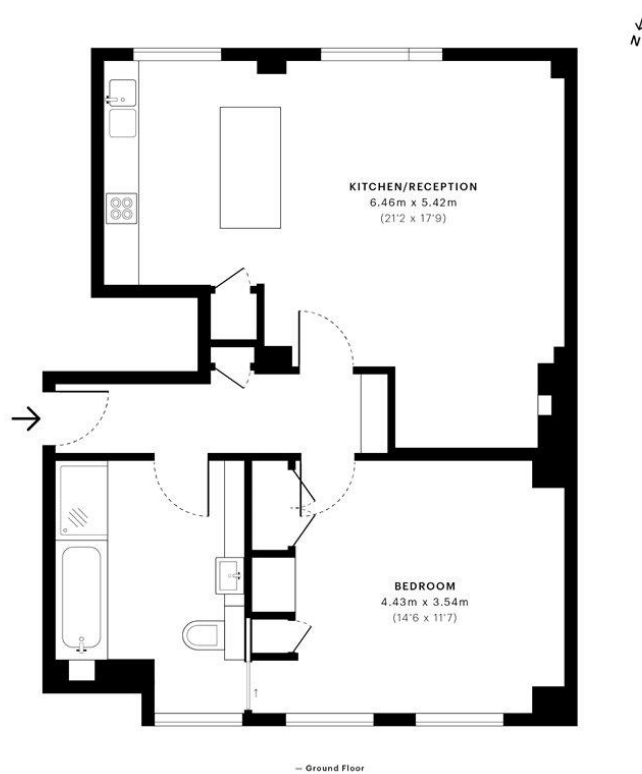
Carter Jonas

Weymouth Street, W1W

CAPTURE DATE:  
05/11/2019

LASER SCAN POINTS:  
19,622,902

GROSS INTERNAL AREA  
58.6 Sqm / 631.3 Sqft



GROSS INTERNAL AREA  
The footprint of the property  
58.6 Sqm / 631.3 Sqft

NET AREA (INTERNAL)  
Excludes walls and external features  
56.3 Sqm / 605.8 Sqft

EXTERNAL STRUCTURAL FEATURES  
Balconies, terraces, verandas etc.  
0.0 Sqm / 0.0 Sqft

RESTRICTED HEAD HEIGHT  
Limited use area under 1.3m  
0.1 Sqm / 0.7 Sqft



Spec floor plans are produced in accordance with the Royal Institution of Chartered Surveyors' Property Measurement Standards. Plots and gardens are illustrative only and are excluded from all area calculations. Due to rounding, numbers may not add up precisely. All measurements shown for the individual room lengths and widths are the maximum points of measurements captured in the scan.

IPMS 3B RESIDENTIAL  
58.9 Sqm / 634.5 Sqft

IPMS 3C RESIDENTIAL  
56.6 Sqm / 609.0 Sqft

SPEC ID:  
5dc005e95ef4790a20f74816

T: 020 7486 8866

37 New Cavendish Street, London, W1G 9TL

E: marylebone.lettings@carterjonas.co.uk

A member of



Exclusive UK affiliate of

CHRISTIE'S  
INTERNATIONAL REAL ESTATE

Classification L2 - Business Data



### IMPORTANT INFORMATION

These particulars are for general information purposes only and do not represent an offer or contract or part of one. Carter Jonas or anyone in their employment has made every attempt to ensure that the particulars and other information provided are as accurate as possible and they are not intended to amount to advice on which you should rely as being factually accurate. Full information which may be relevant to your decision regarding the property can be found on the property listing on [carterjonas.co.uk](http://carterjonas.co.uk) or a separately available material information sheet, and we would advise you to confirm the details of any material information prior to any offer being submitted. You should not assume that the property has all necessary planning, building regulations or other consents and Carter Jonas has not tested any services, facilities, or equipment. Any measurements and distances given are approximate only. Where Carter Jonas has been provided with a floorplan by a third party, we cannot guarantee that the floorplan has been measured in accordance with IPMS. Purchasers or prospective tenants must satisfy themselves of all of the aforementioned by independent inspection or otherwise. Our images only represent part of the property as it appeared at the time they were taken and do not represent the furnishings included; these are confirmed in a separate inventory. If you require further information, please contact us. \*Administration fees may apply depending on tenancy type. Please contact your local branch for this information.