



**4 MARLBOROUGH STREET**  
Bath

**Carter Jonas**



## 4 MARLBOROUGH STREET, BATH, SOMERSET, BA1 2TX

### DESCRIPTION

Currently arranged as three apartments, two of which are maisonettes. Planning for conversion to a whole townhouse single residence could be sought. Vacant possession upon completion. Further information including current rental incomes available on request.

Lower ground floor: One bedroom studio apartment, comprising bedroom/living room · Separate kitchen · Shower room · Two vaults

Ground floor and first floor: Two bedroom maisonette with large living room · Kitchen · Bathroom · Access to rear garden

Second and third floor: Two/three bedroom maisonette with large living/dining room · Kitchen · Bathroom · Store

### SITUATION

The property is situated in one of Bath's finest locations with many local amenities nearby at St James's Street, which offers a variety of shops including a newsagent, chemist, hairdressers, wine bar as well as a nearby florists and greengrocers.

Also close to St James's Square is Royal Victoria Park and its famous botanical gardens.

Bath is a World Heritage Site famed for its Roman heritage and Georgian architecture that offers a wide variety of cultural, leisure, sports, and shopping facilities along with a mainline rail link to London Paddington (journey time from 76 mins) and Bristol Temple Meads (journey time from 11 mins). Junction 18 of the M4 is approximately 11 miles north.

**AN OPPORTUNITY TO PURCHASE A GRADE II LISTED CENTRAL GEORGIAN FREEHOLD PROPERTY IN THE SOUGHT-AFTER LOCATION OF MARLBOROUGH STREET, CLOSE TO ST. JAMES'S SQUARE AND THE ROYAL CRESCENT.**





## ADDITIONAL INFORMATION

**Tenure:** Freehold

**Services:** Electricity, water and drainage are connected

**Planning:** Grade II Listed. Completed 1790 by John Palmer, built by William Hewlett.

**Local Authority:** Bath and North East Somerset Council

**Council Tax Bands:** Lower ground floor flat – B

Ground and first floor maisonette – C

Second and third floor maisonette – C

**EPC Bands:** Lower ground floor flat – D

Ground and first floor maisonette – D

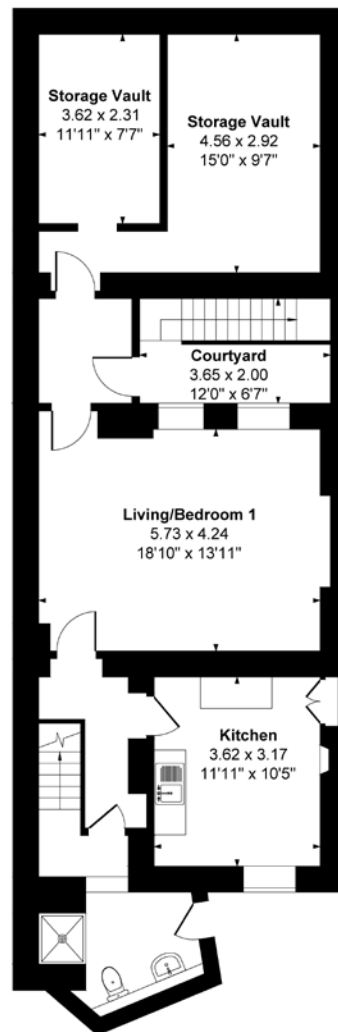
Second and third floor maisonette – D

**Viewing:** Strictly by appointment with Carter Jonas.

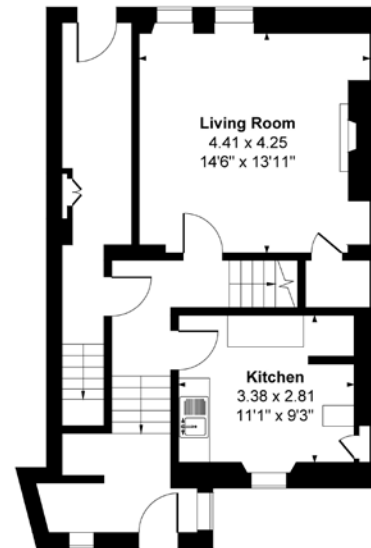


# Marlborough Street, Lansdown, Bath BA1

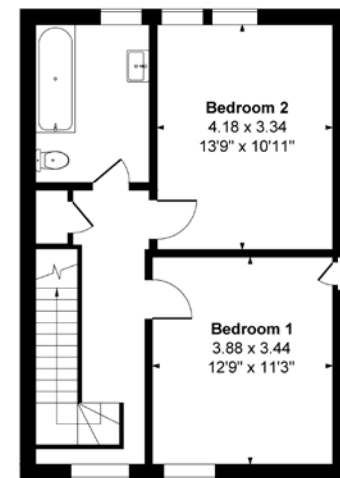
Approximate Gross Internal Area  
Main House = 298 sq m (3203 sq ft)



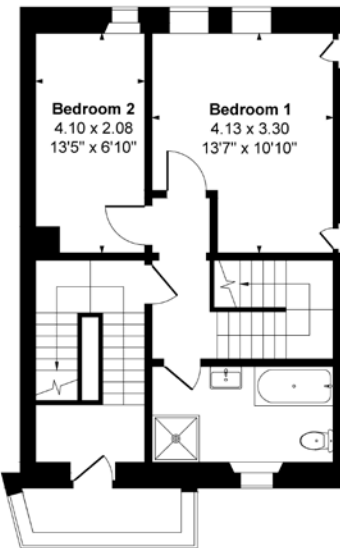
Lower Ground Flat



Ground Floor  
Ground And First Floor Maisonette

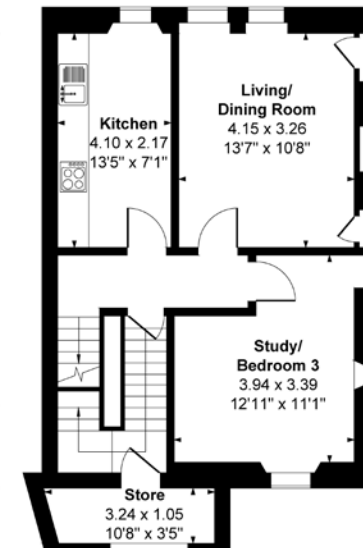


Third Floor



First Floor

Second And Third Floor Maisonette



Second Floor

© Meyer Energy 2025. Drawn to RICS guidelines. Not drawn to scale.  
Plan is for illustration purposes only. All features, door openings, and window locations are approximate.  
All measurements and areas are approximate and should not be relied on as a statement of fact.

**Bath 01225 747250**

bath@carterjonas.co.uk

5-6 Wood Street, Bath, BA1 2JQ

**carterjonas.co.uk**

Offices throughout the UK

## IMPORTANT INFORMATION

These particulars are for general information purposes only and do not represent an offer of contract or part of one. Carter Jonas has made every attempt to ensure that the particulars and other information provided are as accurate as possible and are not intended to amount to advice on which you should rely as being factually accurate. You should not assume that the property has all necessary planning, building regulations or other consents and Carter Jonas have not tested any services, facilities or equipment. Any measurements and distances given are approximate only. Purchasers must satisfy themselves of all of the aforementioned by independent inspection or otherwise. Although we make reasonable efforts to update our information, neither Carter Jonas LLP nor anyone in its employment or acting on its behalf makes any representations warranties or guarantees, whether express or implied, in relation to the property, or that the content in these particulars is accurate, complete or up to date. Our images only represent part of the property as it appeared at the time they were taken. If you require further information please contact us.