



ALCHESTER TERRACE, BICESTER, OX26

£1,250 per month*

Carter Jonas

ALCHESTER TERRACE, BICESTER, OXFORDSHIRE, OX26 6JH

A Victorian terraced house, recently refurbished and positioned close to Bicester town and Bicester village and the train station.

- 2 bedrooms
- 2 reception rooms
- bathroom
- rear garden
- unfurnished
- long term tenancy

THE PROPERTY

Comprising: sitting room with a wood burning stove, dining room with feature period fireplace (not in use), kitchen, rear porch leading out to the garden, ground floor bathroom with a shower over the bath. To the first floor are two bedrooms. Rear garden (not enclosed) and shed.

Mains electric and mains water.

Available March or April for an initial 12 month tenancy. Unfurnished.

EPC: E

Council Tax Band: B (Cherwell Council)

Flood Risk: Very Low

Internet & Mobile: Further information on availability and speeds can be found on the Ofcom website.

Holding deposit = 1 weeks rent of £288

Deposit is 5 weeks rent (£1250 pcm = £1442 deposit)

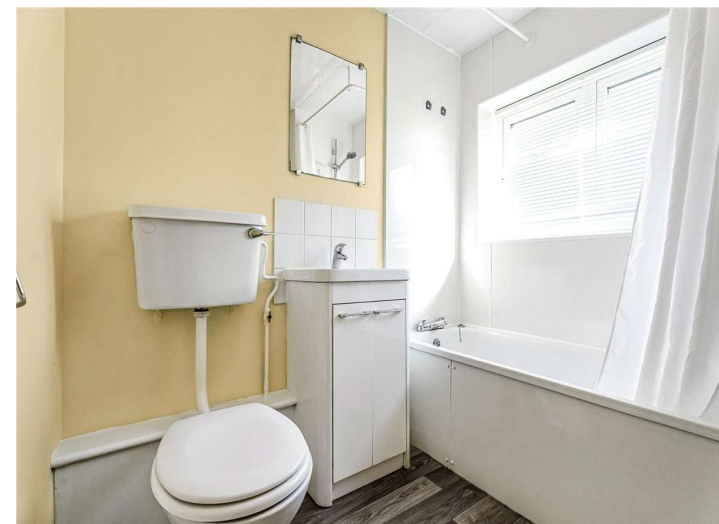


ADDITIONAL INFORMATION

Offers Available for a minimum term of 12 months longer terms will be considered

Viewing Strictly by appointment

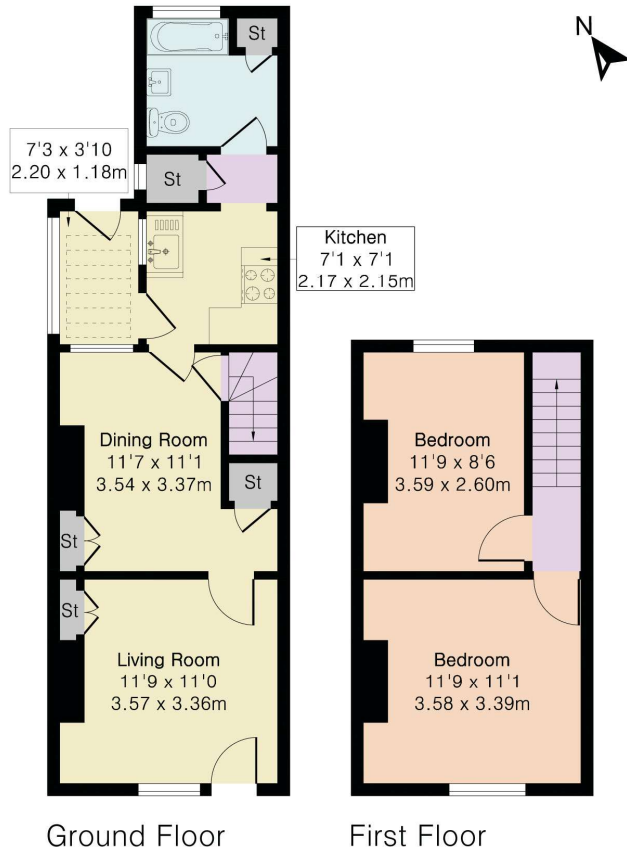
Local Authority Cherwell District Council - Council Tax Band B



Approximate Gross Internal Area 707 sq ft - 65 sq m

Ground Floor Area 435 sq ft – 40 sq m

First Floor Area 272 sq ft – 25 sq m



Floor plan produced in accordance with RICS Property Measurement 2nd Edition. Although Pink Plan Ltd ensures the highest level of accuracy, measurements of doors, windows and rooms are approximate and no responsibility is taken for error, omission or misstatement. These plans are for representation purposes only and no guarantee is given on the total square footage of the property within this plan. The figure icon is for initial guidance only and should not be relied on as a basis of valuation.

Carter Jonas

T: 01865 511444

Mayfield House, 256 Banbury Road, Oxford, Oxfordshire, OX2 7DE

E: oxford.lettings@carterjonas.co.uk



Exclusive UK affiliate of

CHRISTIE'S
INTERNATIONAL REAL ESTATE

Classification L2 - Business Data

IMPORTANT INFORMATION

These particulars are for general information purposes only and do not represent an offer or contract or part of one. Carter Jonas or anyone in their employment has made every attempt to ensure that the particulars and other information provided are as accurate as possible and they are not intended to amount to advice on which you should rely as being factually accurate. Full information which may be relevant to your decision regarding the property can be found on the property listing on carterjonas.co.uk or a separately available material information sheet, and we would advise you to confirm the details of any material information prior to any offer being submitted. You should not assume that the property has all necessary planning, building regulations or other consents and Carter Jonas has not tested any services, facilities, or equipment. Any measurements and distances given are approximate only. Where Carter Jonas has been provided with a floorplan by a third party, we cannot guarantee that the floorplan has been measured in accordance with IPMS. Purchasers or prospective tenants must satisfy themselves of all of the aforementioned by independent inspection or otherwise. Our images only represent part of the property as it appeared at the time they were taken and do not represent the furnishings included; these are confirmed in a separate inventory. If you require further information, please contact us. *Administration fees may apply depending on tenancy type. Please contact your local branch for this information.