



GREAT GREEN COTTAGE, MELLS GREEN, MELLS, BA11 3QP
£2,750 per month*

Carter Jonas

A most wonderful 3 bedroom with a study or bedroom 4 family detached home in the popular and pretty village of Mells.

THE PROPERTY

We are very pleased to be able to offer this wonderful detached family home located in the popular village of Mells, some 14 miles south of Bath and a couple of miles from the bustling town of Frome. Mells has a pretty Church, a village shop/cafe and a very good Pub, The Talbot. It is a village nestled in the countryside and offers wonderful walks and peaceful surrounds. The origins of Great Green Cottage date from the 17th century and the front part is thatched with a more modern extension to the rear which perfectly fuses period charm with modern living.

The accommodation comprises a smart entrance hall that leads to an open plan kitchen/dining room with French doors leading to the garden. There is a utility room off the kitchen. Built in appliances of oven range, dishwasher and fridge/freezer and there is space and plumbing for a washing machine and tumble dryer located in a utility area just off the kitchen. The sitting room is in the original part of the house and has a wonderful Inglenook fireplace with woodburner. Stairs from the hallway lead to the first floor where you will find three double bedrooms, one study or child's small single bedroom, and 3 bathrooms, all of which are en-suite. Externally there is a long driveway providing off street parking and a wonderful garden with views across open countryside. This really is a pretty family home in a picturesque Somerset village.

LPG Gas. EPC Band D. Offered unfurnished and available 1 May 2026.

Council Tax Band D (please see Somerset County Council for current cost)

Mains electric, LPG and metered mains water. Septic tank drainage.

Parking: Driveway parking and further parking to the rear of the driveway.

Internet & Mobile: Further information on availability and speeds can be found on the Ofcom website.

Thatched roof, pond in garden. There is a kitchen garden and further land which is owned by the landlord to the right of the fence



At a rent of £2750 per calendar month:

Holding deposit of 1 week's rent £634.61 (deducted from first month's rent)

Security deposit of 5 weeks rent £3173.07

ADDITIONAL INFORMATION

Offers Available for a minimum term of 12 months longer terms will be considered

Viewing Strictly by appointment

Local Authority - Council Tax Band D

Directions

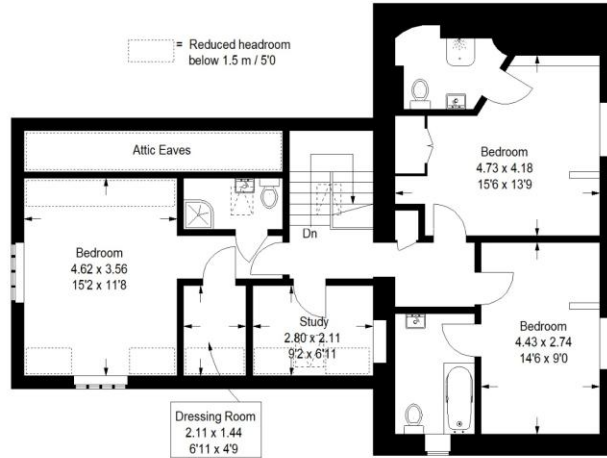


Great Green Cottage

Approximate Gross Internal Area (Excluding Attic Eaves)
197 sq m / 2120 sq ft



Ground Floor



First Floor

Illustration for identification purposes only, measurements are approximate, not to scale.
FloorplansUsketch.com © 2021 (ID 745260)



Score	Energy rating	Current	Potential
92+	A		
81-91	B		
69-80	C		
55-68	D	59 D	82 B
39-54	E		
21-38	F		
1-20	G		

T: 01225 747250
5-6 Wood Street, Bath, Somerset, BA1 2JQ
E: bath.enquiries@carterjonas.co.uk



Exclusive UK affiliate of

CHRISTIE'S
INTERNATIONAL REAL ESTATE

IMPORTANT INFORMATION

These particulars are for general information purposes only and do not represent an offer or contract or part of one. Carter Jonas or anyone in their employment has made every attempt to ensure that the particulars and other information provided are as accurate as possible and they are not intended to amount to advice on which you should rely as being factually accurate. Full information which may be relevant to your decision regarding the property can be found on the property listing on carterjonas.co.uk or a separately available material information sheet, and we would advise you to confirm the details of any material information prior to any offer being submitted. You should not assume that the property has all necessary planning, building regulations or other consents and Carter Jonas has not tested any services, facilities, or equipment. Any measurements and distances given are approximate only. Where Carter Jonas has been provided with a floorplan by a third party, we cannot guarantee that the floorplan has been measured in accordance with IPMS. Purchasers or prospective tenants must satisfy themselves of all of the aforementioned by independent inspection or otherwise. Our images only represent part of the property as it appeared at the time they were taken and do not represent the furnishings included; these are confirmed in a separate inventory. If you require further information, please contact us. *Administration fees may apply depending on tenancy type. Please contact your local branch for this information.