



**PONT STREET, KNIGHTSBRIDGE, SW1X**  
£5,750 per week\*

**Carter Jonas**



## PONT STREET, SW1X

- 3 Bedrooms
- Day concierge
- 3rd & 4th floor duplex
- Lift access
- Furnished
- Closest tube: Knightsbridge
- Pets may be considered by the Landlord

A super smart duplex situated on the third and fourth floors (with direct lift access) of this beautiful red-brick period building typical of this area of Knightsbridge.

Pont Street is enviably positioned in the heart of Knightsbridge moments away from the exclusive boutiques and restaurants of Sloane Street (and Square) as well as the world famous department stores Harrods and Harvey Nichols.

Reception/dining room, fully fitted separate kitchen/breakfast room, 3 double bedrooms, study/single bedroom, en-suite bath & shower room, 2 en-suite shower rooms, cloakroom, direct lift access. Furnished. Day concierge - 8 am - 10 pm.

Holding deposit is 2 week's rent

Security deposit is 6 week's rent

Minimum term is 12 months

EPC rating: C

Royal Borough of Kensington & Chelsea - Council tax band: H

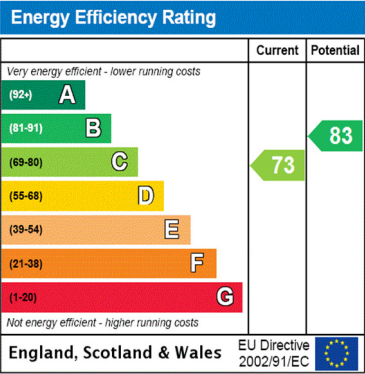
For the latest information on broadband and mobile coverage, please visit Ofcom <https://checker.ofcom.org.uk/en-gb/broadband-coverage>.

For eligibility for resident parking permits, please refer to the RBKC website <https://www.rbkc.gov.uk/parking-transport-and-streets/visitor-parking-and-pay-phone/guide-parking> for further details.

**A super smart duplex situated on the third and fourth floors (with direct lift access) of this beautiful red-brick period building typical of this area of Knightsbridge. EPC rating: C**







ADDITIONAL INFORMATION

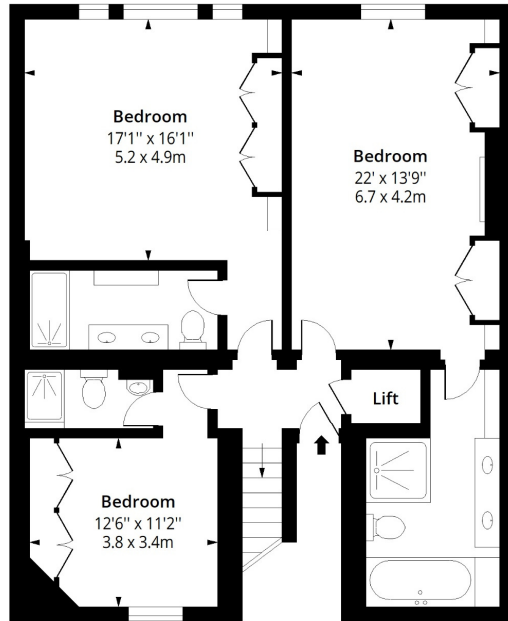
Offers	Available for a minimum term of 12 months longer terms will be considered
Viewing	Strictly by appointment
Local Authority	RBKC - Council Tax Band H
Closest underground station	Knightsbridge





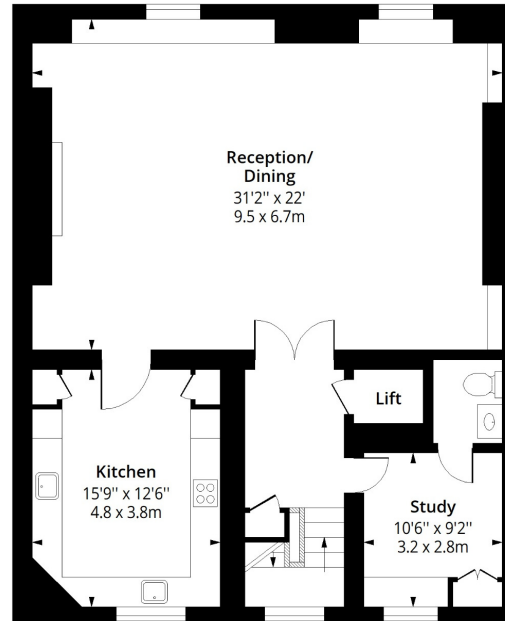
# Pont Street, SW1X

Approx. Gross Internal Area 2339 Sq Ft - 217.29 Sq M



## Third Floor

Floor Area 1137 Sq Ft - 105.63 Sq M



## Fourth Floor

Floor Area 1202 Sq Ft - 111.67 Sq M



Measured according to RICS IPMS2. Floor plan is for illustrative purposes only and is not to scale. Every attempt has been made to ensure the accuracy of the floor plan shown, however all measurements, fixtures, fittings and data shown are an approximate interpretation for illustrative purposes only. 1 sq m = 10.76 sq feet.

lpaplus.com



T: 020 7584 7020

25-27 Harrington Road, London, SW7 3EU

E: chelsea@carterjonas.co.uk

A member of



Exclusive UK affiliate of

**CHRISTIE'S**  
INTERNATIONAL REAL ESTATE

Classification L2 - Business Data

## IMPORTANT INFORMATION

These particulars are for general information purposes only and do not represent an offer or contract or part of one. Carter Jonas or anyone in their employment has made every attempt to ensure that the particulars and other information provided are as accurate as possible and they are not intended to amount to advice on which you should rely as being factually accurate. Full information which may be relevant to your decision regarding the property can be found on the property listing on [carterjonas.co.uk](http://carterjonas.co.uk) or a separately available material information sheet, and we would advise you to confirm the details of any material information prior to any offer being submitted. You should not assume that the property has all necessary planning, building regulations or other consents and Carter Jonas has not tested any services, facilities, or equipment. Any measurements and distances given are approximate only. Where Carter Jonas has been provided with a floorplan by a third party, we cannot guarantee that the floorplan has been measured in accordance with IPMS. Purchasers or prospective tenants must satisfy themselves of all of the aforementioned by independent inspection or otherwise. Our images only represent part of the property as it appeared at the time they were taken and do not represent the furnishings included; these are confirmed in a separate inventory. If you require further information, please contact us. \*Administration fees may apply depending on tenancy type. Please contact your local branch for this information.