



**LARK PLACE, BATH, BA1 3BA**

£2,150 per month

**Carter Jonas**

---

## Stylishly Renovated Home in a Sought-After Bath Location

### THE PROPERTY

This beautifully presented Grade II listed home has been thoughtfully renovated throughout, offering a perfect balance of character and contemporary style, all set in a desirable location to the west of Bath city centre.

Entered via a neat front approach, the property opens into a welcoming hallway leading to a bright and comfortable living/dining space, ideal for both everyday living and entertaining. To the rear, a modern kitchen provides a fresh, sophisticated feel with quality fittings and ample storage, creating a practical yet stylish heart of the home. From here, access is granted to a private rear garden, offering a peaceful outdoor space to unwind.

The ground floor is completed by a well-appointed bathroom with bath and shower over.

Upstairs, the property offers three bedrooms, two well-proportioned doubles and a single, providing flexible accommodation.

Convenient access to Bath city centre, whether by foot, bike, or public transport

Close to local amenities, including shops and cafés.

Regret no students.

EPC Rating C. Council Tax Band C (please see Bath & North East Somerset website for current cost).

Mains electric, gas and metered mains water.

Parking: On-street permit parking

Internet & Mobile: Further information on availability and speeds can be found on the Ofcom website.

At a rent of £2,150 per calendar month:

Holding deposit of 1 week's rent £496.15(deducted from first month's rent)

Security deposit of 5 weeks rent £2480.76



---

## **ADDITIONAL INFORMATION**

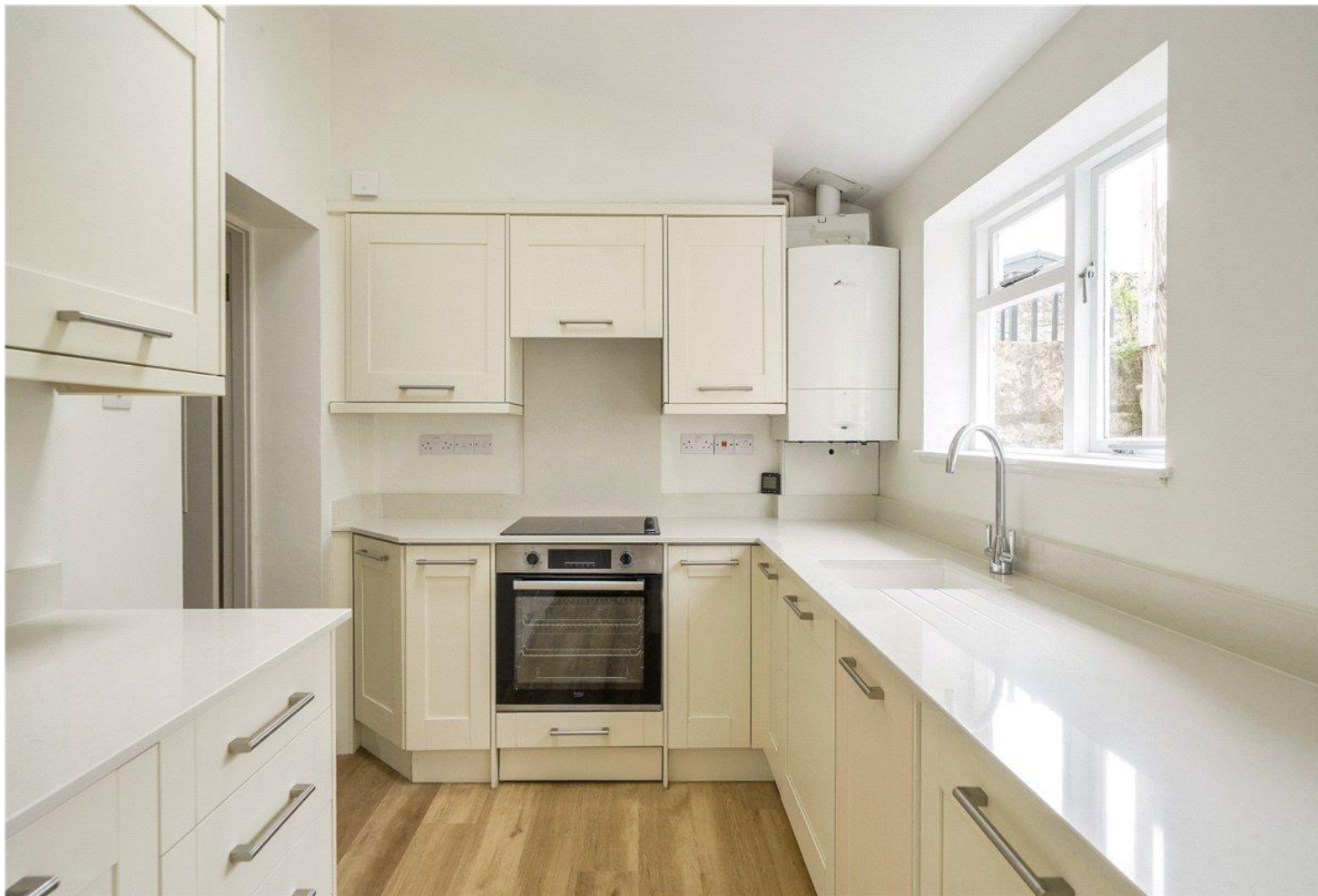
---

Viewing Strictly by appointment

---

Local Authority - Council Tax Band C

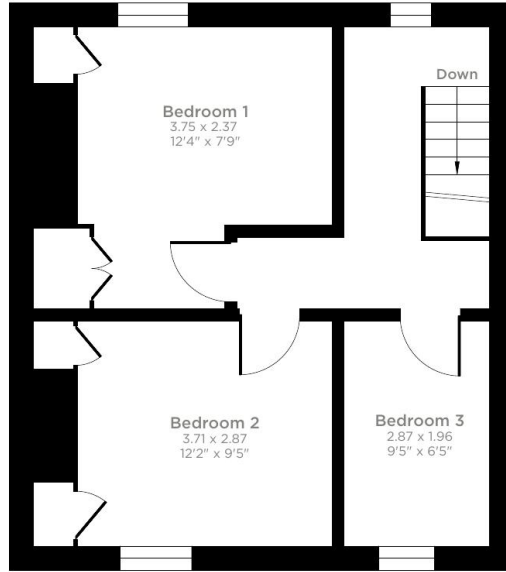
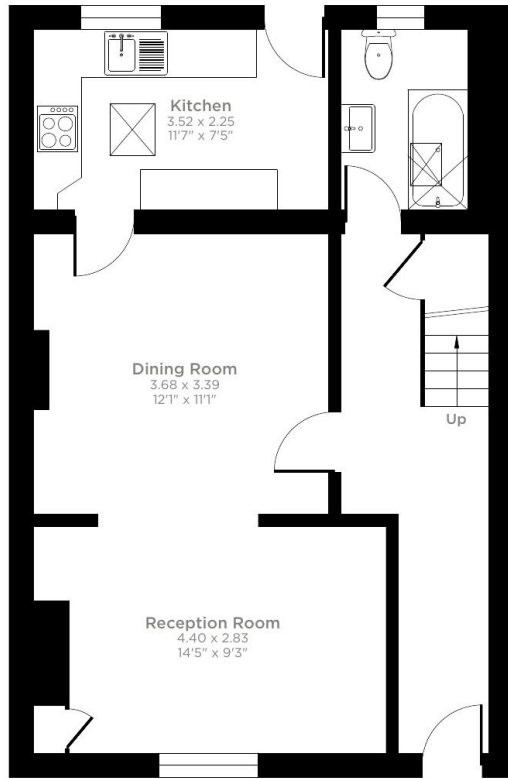
---



# Lark Place, Bath, BA1

Approximate Area = 940 sq ft / 87.3 sq m

For identification only - Not to scale



Floor plan produced in accordance with RICS Property Measurement 2nd Edition, Incorporating International Property Measurement Standards (IPMS2 Residential). © nchecon 2026. Produced for Carter Jonas. REF: 1478480

| Score | Energy rating | Current | Potential |
|-------|---------------|---------|-----------|
| 92+   | A             |         | 87B       |
| 81-91 | B             |         |           |
| 69-80 | C             |         |           |
| 55-68 | D             | 67D     |           |
| 39-54 | E             |         |           |
| 21-38 | F             |         |           |
| 1-20  | G             |         |           |

**T: 01225 747250**  
 5-6 Wood Street, Bath, Somerset, BA1 2JQ  
 E: bath.enquiries@carterjonas.co.uk



Exclusive UK affiliate of

**CHRISTIE'S**  
 INTERNATIONAL REAL ESTATE

Classification L2 - Business Data

### IMPORTANT INFORMATION

These particulars are for general information purposes only and do not represent an offer or contract or part of one. Carter Jonas or anyone in their employment has made every attempt to ensure that the particulars and other information provided are as accurate as possible and they are not intended to amount to advice on which you should rely as being factually accurate. Full information which may be relevant to your decision regarding the property can be found on the property listing on [carterjonas.co.uk](http://carterjonas.co.uk) or a separately available material information sheet, and we would advise you to confirm the details of any material information prior to any offer being submitted. You should not assume that the property has all necessary planning, building regulations or other consents and Carter Jonas has not tested any services, facilities, or equipment. Any measurements and distances given are approximate only. Where Carter Jonas has been provided with a floorplan by a third party, we cannot guarantee that the floorplan has been measured in accordance with IPMS. Purchasers or prospective tenants must satisfy themselves of all of the aforementioned by independent inspection or otherwise. Our images only represent part of the property as it appeared at the time they were taken and do not represent the furnishings included; these are confirmed in a separate inventory. If you require further information, please contact us. \*Administration fees may apply depending on tenancy type. Please contact your local branch for this information.