



EVELEIGH AVENUE, BATH, BA1

£2,850 per month*

Carter Jonas

A wonderful modern 4 bedroom, 3 bathroom Townhouse just to the east of Bath City Centre in Batheaston.

- Sitting Room
- Kitchen/Dining/Living Room
- Cloakroom
- Master Bedroom with en suite bathroom
- Further bedroom with en suite shower room
- 2 further bedrooms
- Utility Room
- Rear courtyard garden
- Parking space

THE PROPERTY

A modern terraced townhouse arranged over 3 floors just to the east of Bath City Centre. Approached via a private, leafy road, the property offers extremely family friendly accommodation. Upon entering, the hallway leads to the Sitting Room on the ground floor, with double aspect, a cloakroom and a Master Bedroom with en suite bathroom. Stairs go down to the garden level where there is a most wonderful open-plan newly fitted Kitchen/Living Room/Dining Room with integrated appliances in the kitchen. Double doors lead out onto rear courtyard garden. On the first floor are 3 further bedrooms, one having en suite shower room and a further family bathroom. Externally, and accessed from the open plan kitchen/dining/living room, is an enclosed courtyard garden. The property also benefits from one off-street parking space but the street is not subject to permit parking.

The property is situated some 4 miles to the east of Bath City Centre and offers great access to Junction 18 of the M4 via the A46, in addition to being just 10 minutes short drive from Bath city centre and with Corsham, Box and Chippenham to the east. The very popular primary school, at Bathampton, is half a mile away and there is also a good primary school at Batheaston. This really is a lovely family home on the outskirts of the city.

EPC Rating C. Council Tax Band G (please see Bath & North East Somerset website for current cost)

Mains electric, gas and metered mains water.

Parking: On street non permit parking and an off street parking space at the rear.



Internet & Mobile: Further information on availability and speeds can be found on the Ofcom website.

At a rent of £2850 per calendar month: Holding deposit of 1 week's rent £657.69 Security deposit of 5 weeks rent £3,288.46

Available from 10th August 2026. Council Tax Band G. EPC Band C.

ADDITIONAL INFORMATION

Offers

Viewing Strictly by appointment

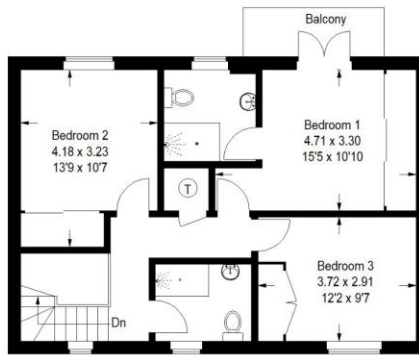
Local Authority - Council Tax Band G

Directions



28 Everleigh Avenue

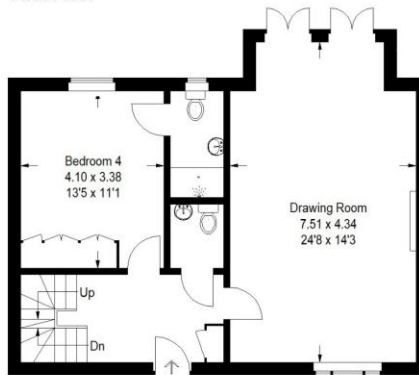
Approximate Gross Internal Area
184.3 sq m / 1984 sq ft



First Floor

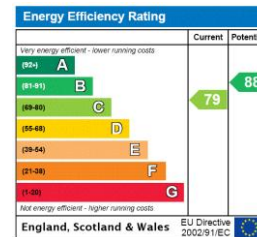


Garden Level



Ground Floor

Illustration for identification purposes only, measurements are approximate, not to scale.
FloorplansUsketch.com © 2020 (ID642347)



T: 01225 747250
5-6 Wood Street, Bath, Somerset, BA1 2JQ
E: bath.enquiries@carterjonas.co.uk



Exclusive UK affiliate of

CHRISTIE'S
INTERNATIONAL REAL ESTATE

Classification L2 - Business Data

IMPORTANT INFORMATION

These particulars are for general information purposes only and do not represent an offer or contract or part of one. Carter Jonas or anyone in their employment has made every attempt to ensure that the particulars and other information provided are as accurate as possible and they are not intended to amount to advice on which you should rely as being factually accurate. Full information which may be relevant to your decision regarding the property can be found on the property listing on carterjonas.co.uk or a separately available material information sheet, and we would advise you to confirm the details of any material information prior to any offer being submitted. You should not assume that the property has all necessary planning, building regulations or other consents and Carter Jonas has not tested any services, facilities, or equipment. Any measurements and distances given are approximate only. Where Carter Jonas has been provided with a floorplan by a third party, we cannot guarantee that the floorplan has been measured in accordance with IPMS. Purchasers or prospective tenants must satisfy themselves of all of the aforementioned by independent inspection or otherwise. Our images only represent part of the property as it appeared at the time they were taken and do not represent the furnishings included; these are confirmed in a separate inventory. If you require further information, please contact us. *Administration fees may apply depending on tenancy type. Please contact your local branch for this information.