



GROSVENOR SQUARE, MAYFAIR, W1K
£3,750 per week*

Carter Jonas

FLAT 23, GROSVENOR SQUARE, MAYFAIR, LONDON, W1K 2HN

A three bedroom apartment of approximately 1,808 square feet.

- Furnished
- 3 Bedrooms
- 1 Reception / dining room
- Kitchen / breakfast room
- 2 En suite bathrooms
- 1 Shower room
- Guest cloakroom

LOCATION

Mayfair is London's most fashionable destination. With London's finest buildings, largest concentration of luxury hotels, best restaurants, bars, shopping, open spaces and hidden treasures all nestled together in a beautiful village setting.

Nearest Tube: Bond Street / Marble Arch

THE PROPERTY

This beautiful apartment is situated on the fourth floor of a prestigious building centrally located in the heart of Mayfair. The apartment has been finished to a high standard and has the benefit of 24 hour concierge and a communal courtyard.

NHA

The deposit will be £22,500 at a rental value of £3,750 (asking price)

Holding deposit = 1 weeks rent of £3,750

Deposit is 6 weeks rent (£3,750 pw = £22,500 deposit)

Heating and Hot Water - Community Scheme

No Parking included with the apartment.

Mobile phone coverage and speeds can be checked here: checker.ofcom.org.uk, however, all providers are predicted to have good levels of service inside at this property.



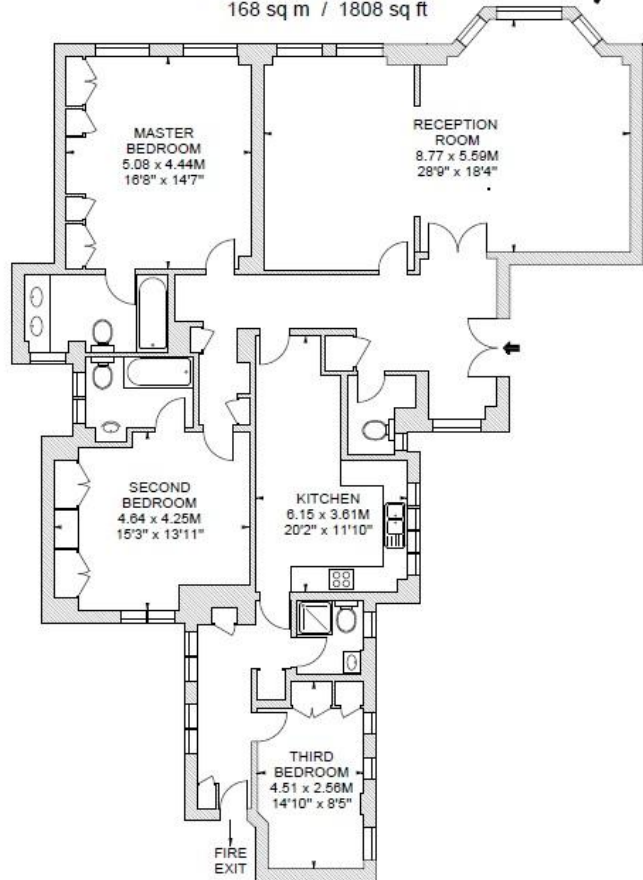
Ultra Fast Broadband available (included in rent) and mobile coverage available. Broadband speeds can be checked here: checker.ofcom.org.uk.

ADDITIONAL INFORMATION	
Viewing	Strictly by appointment
Local Authority	Westminster City Council - Council Tax Band H



Flat 23
Fourth Floor
Grosvenor Square, W1

Approximate gross internal area
168 sq m / 1808 sq ft

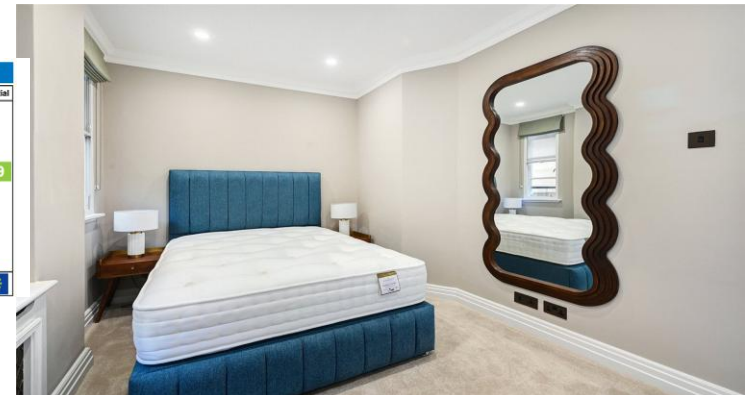


Grosvenor Square

Scale 1:100

Scale floor plans produced by Mays Floorplans ©. Tel 020 3397 4594
All measurements are maximum, and include wardrobes and window bays where applicable

Energy Efficiency Rating		
	Current	Potential
Very energy efficient - lower running costs		
(91-100) A		
(81-90) B		
(69-80) C		
(55-68) D	66	69
(39-54) E		
(21-38) F		
(1-20) G		
Not energy efficient - higher running costs		
England, Scotland & Wales EU Directive 2002/91/EC		



T: 020 7493 0676

18 Davies Street, Mayfair, London, W1K 3DS

E: mayfair@carterjonas.co.uk

A member of



Exclusive UK affiliate of

CHRISTIE'S
INTERNATIONAL REAL ESTATE

Classification L2 - Business Data

IMPORTANT INFORMATION

These particulars are for general information purposes only and do not represent an offer or contract or part of one. Carter Jonas or anyone in their employment has made every attempt to ensure that the particulars and other information provided are as accurate as possible and they are not intended to amount to advice on which you should rely as being factually accurate. Full information which may be relevant to your decision regarding the property can be found on the property listing on carterjonas.co.uk or a separately available material information sheet, and we would advise you to confirm the details of any material information prior to any offer being submitted. You should not assume that the property has all necessary planning, building regulations or other consents and Carter Jonas has not tested any services, facilities, or equipment. Any measurements and distances given are approximate only. Where Carter Jonas has been provided with a floorplan by a third party, we cannot guarantee that the floorplan has been measured in accordance with IPMS. Purchasers or prospective tenants must satisfy themselves of all of the aforementioned by independent inspection or otherwise. Our images only represent part of the property as it appeared at the time they were taken and do not represent the furnishings included; these are confirmed in a separate inventory. If you require further information, please contact us. *Administration fees may apply depending on tenancy type. Please contact your local branch for this information.