



**RICHMOND COURT, 200 SLOANE STREET, SW1X**  
£1,050 per week\*

**Carter Jonas**



# FLAT 12, RICHMOND COURT, 200 SLOANE STREET, LONDON, SW1X

A one bedroom apartment of approximately 850 square feet.

- Furnished
- 1 Bedroom
- 1 Reception room
- 1 Kitchen
- 1 Bathroom

## LOCATION

Stylish Belgravia is located on the edge of Hyde Park. It encompasses London's prime residential garden squares and is packed with Michelin-starred restaurants, specialist shops, historic buildings and residential dwellings.

Nearest Tube: Knightsbridge

## THE PROPERTY

This smart apartment is situated on the third floor of this well maintained block with lift and 24 hour porter. Located within walking distance of Hyde Park, Sloane Square and Harrods it also the additional benefit of hot water, central heating and wifi included within the rent.

### AST

The deposit will be £6,300 at a rental value of £1,050 (asking price).

Holding deposit = 1 weeks rent of £1,050

Deposit is 6 weeks rent (£1,050 pw = £6,300 deposit)

Heating and Hot Water - Community Scheme

No Parking included with the apartment.

Mobile phone coverage and speeds can be checked here: [checker.ofcom.org.uk](http://checker.ofcom.org.uk), however, all providers are predicted to have good levels of service inside at this property.





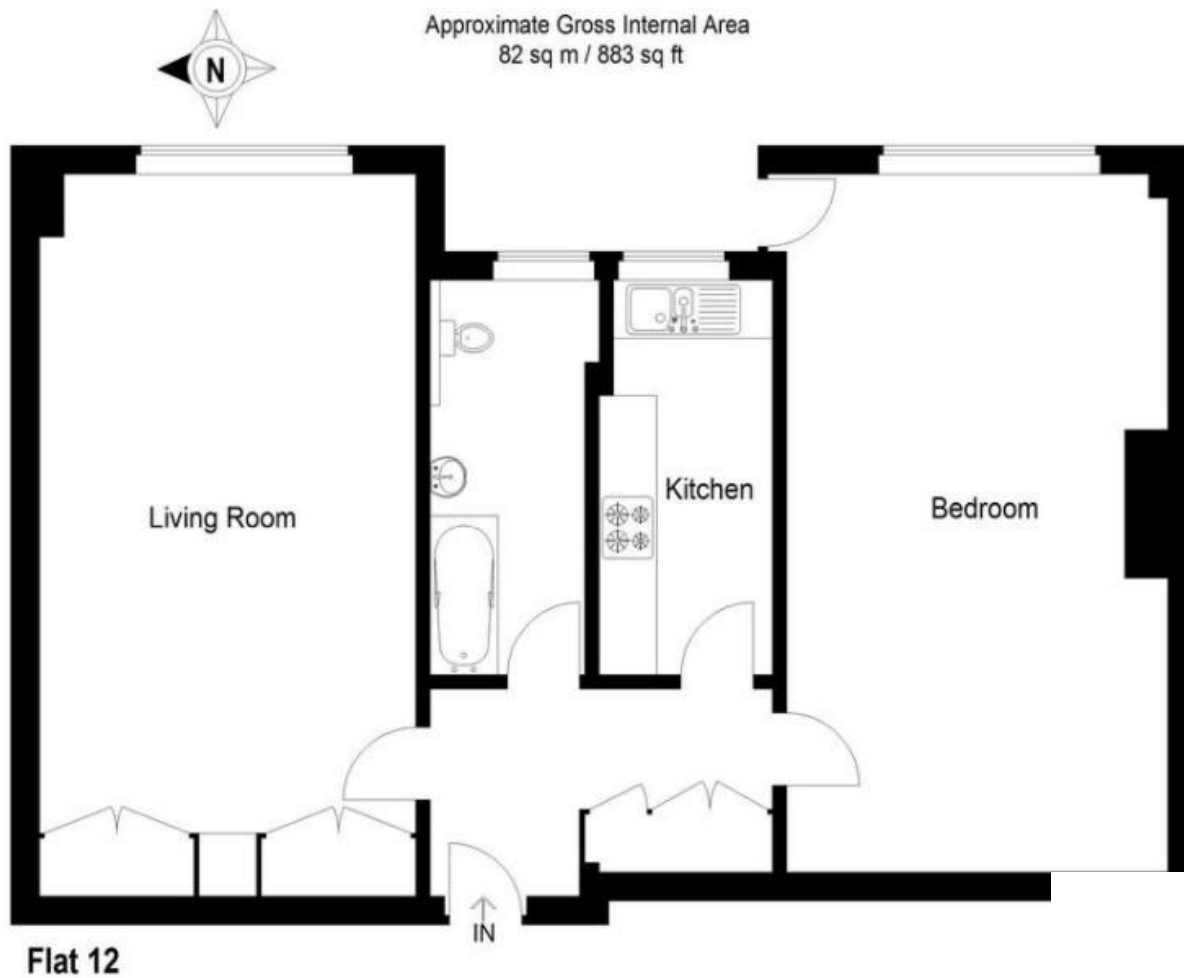
FTTC & ADSL Broadband available and mobile coverage available.  
Ultra Fast Broadband may be available. Broadband speeds can be  
checked here: [checker.ofcom.org.uk](http://checker.ofcom.org.uk).

Local Authority: Kensington & Chelsea Borough Council (Band F)

**ADDITIONAL INFORMATION**

Viewing	Strictly by appointment
Local Authority	Kensington & Chelsea Borough Council - Council Tax Band G





T: 020 7493 0676

18 Davies Street, Mayfair, London, W1K 3DS

E: [mayfair@carterjonas.co.uk](mailto:mayfair@carterjonas.co.uk)

A member of



*Exclusive UK affiliate of*

**CHRISTIE'S**  
INTERNATIONAL REAL ESTATE

Classification L2 - Business Data

#### IMPORTANT INFORMATION

These particulars are for general information purposes only and do not represent an offer or contract or part of one. Carter Jonas or anyone in their employment has made every attempt to ensure that the particulars and other information provided are as accurate as possible and they are not intended to amount to advice on which you should rely as being factually accurate. Full information which may be relevant to your decision regarding the property can be found on the property listing on [carterjonas.co.uk](http://carterjonas.co.uk) or a separately available material information sheet, and we would advise you to confirm the details of any material information prior to any offer being submitted. You should not assume that the property has all necessary planning, building regulations or other consents and Carter Jonas has not tested any services, facilities, or equipment. Any measurements and distances given are approximate only. Where Carter Jonas has been provided with a floorplan by a third party, we cannot guarantee that the floorplan has been measured in accordance with IPMS. Purchasers or prospective tenants must satisfy themselves of all of the aforementioned by independent inspection or otherwise. Our images only represent part of the property as it appeared at the time they were taken and do not represent the furnishings included; these are confirmed in a separate inventory. If you require further information, please contact us. \*Administration fees may apply depending on tenancy type. Please contact your local branch for this information.