



**MILLBANK, WESTMINSTER, SW1P**

£1,300 per week\*

**Carter Jonas**

---

## **APT E002, RIVERWALK, MILLBANK, WESTMINSTER, SW1P 4FD**

- 24-hour Concierge/Security
  - 2 Bedrooms
  - 2 Bath/Shower rooms
  - Air Conditioning
- Large Reception Room
  - Open-plan Kitchen
    - Balcony
- Parking space (by separate negotiation)

### **LOCATION**

Westminster lies on the north bank of the River Thames. It has its own University and shopping street alongside a substantial residential element which is home to many Members of Parliament, political journalists and students. Its core encompasses the famous Historic landmarks of the Houses of Parliament and Westminster Abbey and has been the seat of the Government of England for almost a thousand years. A more recent landmark and tourist attraction is the London Eye from where fantastic views of the City can be seen.

Nearest Tube: Pimlico / Victoria

### **THE PROPERTY**

This bright apartment with views over the River Thames is situated on the raised ground floor of this new development ideally located in Westminster with 24 hour concierge, fitness suite and underground parking. The apartment has been finished with wood flooring and benefits from air conditioning and a balcony overlooking the river.

### AST

The deposit will be £7,800 at a rental value of £1,300 per week (asking price)

Holding deposit = 1 weeks rent of £1,300 per week

Deposit is 6 weeks rent (£1,300 per week = £7,800 deposit)

A two bedroom apartment of approximately 839 square feet.



Heating & Hot Water: Community Scheme

For the latest information on broadband and mobile coverage, please visit the Ofcom website <https://checker.ofcom.org.uk/en-gb/broadband-coverage>.

Residents Parking Available.

---

## **ADDITIONAL INFORMATION**

---

Viewing Strictly by appointment

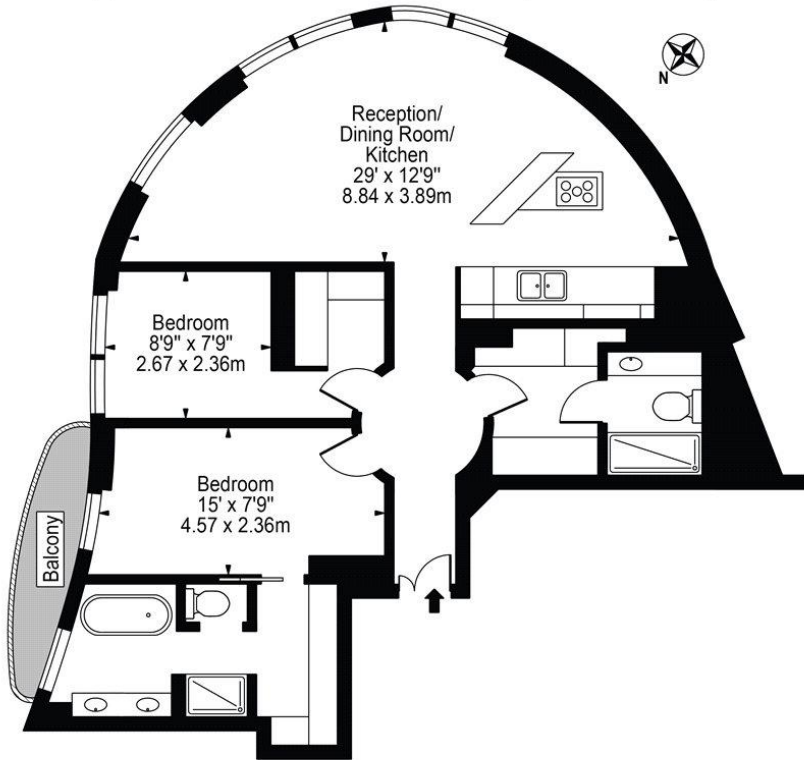
---

Local Authority Westminster City Council - Council Tax Band H

---



The Riverwalk,  
Millbank, SW1P 4RR  
Approx. Gross Internal Area 839 Sq Ft - 77.95 Sq M



Ground Floor

For Illustration Purposes Only - Not To Scale

This floor plan should be used as a general outline for guidance only and does not constitute in whole or in part an offer or contract. Any intending purchaser or lessee should satisfy themselves by inspection, searches, enquiries and full survey as to the correctness of each statement. Any areas, measurements or distances quoted are approximate and should not be used to value a property or be the basis of any sale or let.

Energy Efficiency Rating		Current	Potential
92-95	A		
81-91	B	83	83
69-80	C		
55-68	D		
49-54	E		
45-48	F		
35-44	G		

UK energy efficient - best ranking class

UK energy efficient - higher ranking class

EU Directive 2002/91/EC



T: 020 7493 0676

18 Davies Street, Mayfair, London, W1K 3DS

E: mayfair.lettings@carterjonas.co.uk



Exclusive UK affiliate of

**CHRISTIE'S**  
INTERNATIONAL REAL ESTATE

Classification L2 - Business Data

**IMPORTANT INFORMATION**

These particulars are for general information purposes only and do not represent an offer or contract or part of one. Carter Jonas or anyone in their employment has made every attempt to ensure that the particulars and other information provided are as accurate as possible and they are not intended to amount to advice on which you should rely as being factually accurate. Full information which may be relevant to your decision regarding the property can be found on the property listing on [carterjonas.co.uk](http://carterjonas.co.uk) or a separately available material information sheet, and we would advise you to confirm the details of any material information prior to any offer being submitted. You should not assume that the property has all necessary planning, building regulations or other consents and Carter Jonas has not tested any services, facilities, or equipment. Any measurements and distances given are approximate only. Where Carter Jonas has been provided with a floorplan by a third party, we cannot guarantee that the floorplan has been measured in accordance with IPMS. Purchasers or prospective tenants must satisfy themselves of all of the aforementioned by independent inspection or otherwise. Our images only represent part of the property as it appeared at the time they were taken and do not represent the furnishings included; these are confirmed in a separate inventory. If you require further information, please contact us. \*Administration fees may apply depending on tenancy type. Please contact your local branch for this information.