



MONTAGU SQUARE, MARYLEBONE, W1H
£3,400 per month*

Carter Jonas

MONTAGU SQUARE, MARYLEBONE, LONDON, W1H 2LN

- One Bedroom
- One Reception Room
- One Bathroom
- Unfurnished or furnished at extra cost
- Access to private Montagu Square gardens

THE PROPERTY

This lovely property on Montagu Square has one double bedroom, one-bathroom, good size entrance hall and very useful storage via internal vaults. The kitchen is high spec alongside the shower room.

Montagu Square is one of Marylebone's most sought-after addresses, combining the serenity of a garden square with easy access to all the amenities of Marylebone and the West End. Walking distance to Marylebone High Street, Regent's Park and many transport links. A key to the Montagu Square gardens can be requested.

Available for long term rental on an unfurnished basis or furnished by separate negotiation.

Holding deposit is 1 week's rent = £784.62 (at asking price)

Security deposit is 5 weeks rent = £3,923.07 (at asking price of £784.62 per week)

Council Tax Band - D

For eligibility for resident parking permits, please refer to the <https://www.westminster.gov.uk/parking> website for further details.

For the latest information on broadband and mobile coverage, please visit <https://checker.ofcom.org.uk/en-gb/broadband-coverage> for the most up-to-date details.

A spacious lower ground floor one bedroom apartment featuring an open plan kitchen / reception room with wood floors on the sought-after location of Montagu Square.




ADDITIONAL INFORMATION

Offers Available for a minimum term of 12 months longer terms will be considered

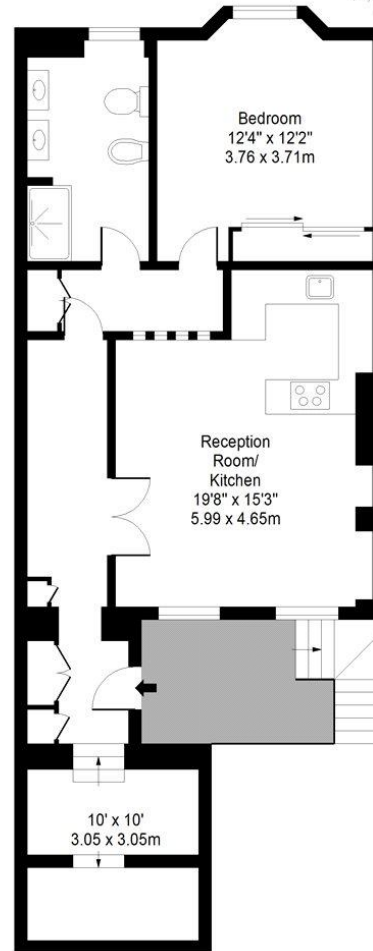
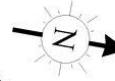
Viewing Strictly by appointment

Local Authority City of Westminster - Selective Licences - Council Tax Band D

| Energy Efficiency Rating | | Current | Potential |
|---|----------|----------------------------|---|
| Very energy efficient - lower running costs | | | |
| (92-) | A | | |
| (81-91) | B | 83 | 83 |
| (69-80) | C | | |
| (55-68) | D | | |
| (39-54) | E | | |
| (21-38) | F | | |
| (1-20) | G | | |
| Not energy efficient - higher running costs | | | |
| England, Scotland & Wales | | EU Directive 2002/91/EC |  |



MONTAGU SQUARE



Lower Ground Floor

Approx. Gross Internal Area 827 Sq Ft - 76.83 Sq M
For Illustrative Purposes Only - Not To Scale

T: 020 7486 8866

37 New Cavendish Street, London, W1G 9TL

E: marylebone.lettings@carterjonas.co.uk

A member of



Exclusive UK affiliate of

CHRISTIE'S
INTERNATIONAL REAL ESTATE

Classification L2 - Business Data

IMPORTANT INFORMATION

These particulars are for general information purposes only and do not represent an offer or contract or part of one. Carter Jonas or anyone in their employment has made every attempt to ensure that the particulars and other information provided are as accurate as possible and they are not intended to amount to advice on which you should rely as being factually accurate. Full information which may be relevant to your decision regarding the property can be found on the property listing on carterjonas.co.uk or a separately available material information sheet, and we would advise you to confirm the details of any material information prior to any offer being submitted. You should not assume that the property has all necessary planning, building regulations or other consents and Carter Jonas has not tested any services, facilities, or equipment. Any measurements and distances given are approximate only. Where Carter Jonas has been provided with a floorplan by a third party, we cannot guarantee that the floorplan has been measured in accordance with IPMS. Purchasers or prospective tenants must satisfy themselves of all of the aforementioned by independent inspection or otherwise. Our images only represent part of the property as it appeared at the time they were taken and do not represent the furnishings included; these are confirmed in a separate inventory. If you require further information, please contact us. *Administration fees may apply depending on tenancy type. Please contact your local branch for this information.