



**GRANDPONT PLACE, LONGFORD CLOSE, OX1**  
£1,750 per month\*

**Carter Jonas**

---

# GRANDPONT PLACE, LONGFORD CLOSE, OXFORD, OXFORDSHIRE, OX1 4NH

A first floor apartment situated close to city centre amenities. This property benefits from a newly fitted kitchen and bathroom.

- 2 Bedrooms
- 1 bathroom
- Reception room
- Newly fitted kitchen
- first floor
- unfurnished
- allocated parking

## THE PROPERTY

Comprising : Entrance hall, reception room, kitchen, 2 bedrooms, bathroom, allocated parking for one car and communal grounds.

Available early February 2026 on an unfurnished basis for a minimum tenancy term of 12 months.

Mains gas, electricity and water are connected to the property.

Internet & Mobile: Further information on availability and speeds can be found at [checker.ofcom.org.uk](https://checker.ofcom.org.uk)

The property is leasehold

Flood zone 2: Medium risk

Council tax band: D please check current costs with Oxford city council.

EPC rating: C

Holding deposit = 1 weeks rent of £403

Deposit is 5 weeks rent (£1750 pcm = £1961 deposit)





---

## ADDITIONAL INFORMATION

Offers	Available for a minimum term of 12 months longer terms will be considered
--------	---

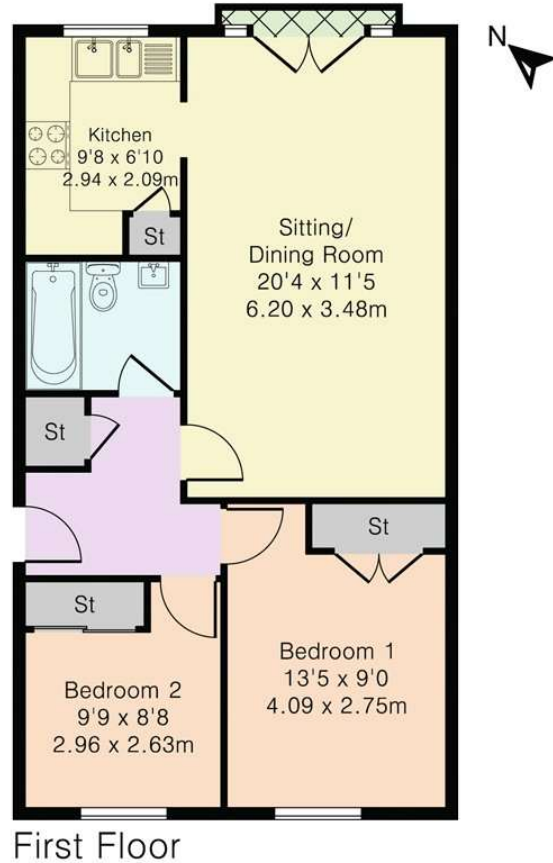
Viewing	Strictly by appointment
---------	-------------------------

Local Authority	Oxford City Council - Council Tax Band D
-----------------	--

---



Approximate Gross Internal Area 631 sq ft - 59 sq m



Although Pink Plan Ltd ensures the highest level of accuracy, measurements of doors, windows and rooms are approximate and no responsibility is taken for error, omission or misstatement. These plans are for representation purposes only as defined by RICS code of measuring practise. No guarantee is given on total square footage of the property within this plan. The figure icon is for initial guidance only and should not be relied on as a basis of valuation.



Carter Jonas

*Exclusive UK affiliate of*  
**CHRISTIE'S**  
INTERNATIONAL REAL ESTATE

Classification L2 - Business Data

**T: 01865 511444**

Mayfield House, 256 Banbury Road, Oxford, Oxfordshire, OX2 7DE

E: [oxfordresilettings@carterjonas.co.uk](mailto:oxfordresilettings@carterjonas.co.uk)

A member of



#### IMPORTANT INFORMATION

These particulars are for general information purposes only and do not represent an offer or contract or part of one. Carter Jonas or anyone in their employment has made every attempt to ensure that the particulars and other information provided are as accurate as possible and they are not intended to amount to advice on which you should rely as being factually accurate. Full information which may be relevant to your decision regarding the property can be found on the property listing on [carterjonas.co.uk](http://carterjonas.co.uk) or a separately available material information sheet, and we would advise you to confirm the details of any material information prior to any offer being submitted. You should not assume that the property has all necessary planning, building regulations or other consents and Carter Jonas has not tested any services, facilities, or equipment. Any measurements and distances given are approximate only. Where Carter Jonas has been provided with a floorplan by a third party, we cannot guarantee that the floorplan has been measured in accordance with IPMS. Purchasers or prospective tenants must satisfy themselves of all of the aforementioned by independent inspection or otherwise. Our images only represent part of the property as it appeared at the time they were taken and do not represent the furnishings included; these are confirmed in a separate inventory. If you require further information, please contact us. \*Administration fees may apply depending on tenancy type. Please contact your local branch for this information.