



TERRACE WALK, BATH, BA1

£800 per month*

Carter Jonas

FLAT 3, TERRACE WALK, BATH, SOMERSET, BA1 1LN

- Studio
- Kitchenette
- Furnished

THE PROPERTY

Rent includes Council Tax, water and Wi-fi. Located in a prime city centre spot, this room would suit professionals looking to embrace city life. The kitchenette is equipped with the white goods of washing machine, oven and fridge. The remainder of the property is offered fully furnished with shared toilet facilities that can be accessed via the hallway. There is a bathroom and a shower room on the floor below in addition to another WC. PLEASE NOTE THAT THE 8 STUDIO ROOMS SHARE TWO BATHROOMS AND 3 WC's. Looking over parade gardens, this is a spacious studio with shared bathroom facilities and the space benefits from a large window which brings in plenty of natural light.

Available for an initial 6 month tenancy.

EPC Rating E. Council Tax Band G (please see BANES website for current cost)

Council Tax, Water Rates & Wifi Included in rent. Room has its own electric meter for electric radiators. Parking: No parking permit available for this property. Internet & Mobile: Further information on availability and speeds can be found on the Ofcom website.

At a rent of £800.00 per calendar month: Holding deposit of 1 week's rent £184.61 Security deposit of 5 weeks rent £923.07

A studio room, one of 8 studio rooms, in a central location with its own kitchen but shared facilities of two bathrooms and 3 W.C's with the other 7 studio rooms.



ADDITIONAL INFORMATION

Offers Available for a minimum term of 12 months longer terms will be considered

Viewing Strictly by appointment

Local Authority - Council Tax Band E

Directions





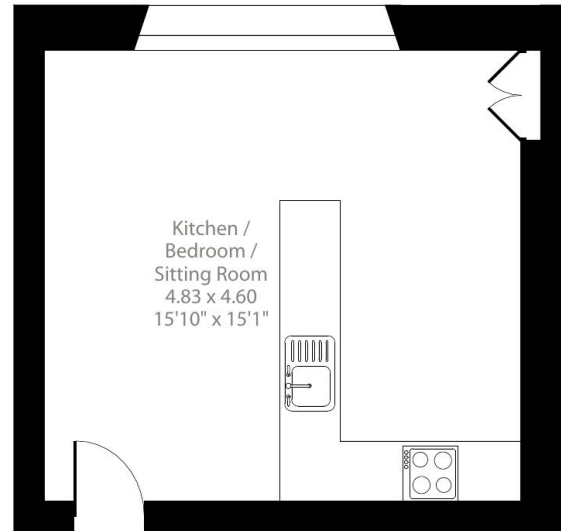
Terrace Walk, Bath, BA1

Approximate Area = 247 sq ft / 22.9 sq m

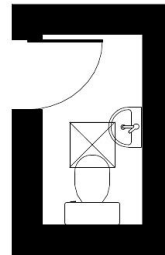
Outbuilding = 60 sq ft / 5.6 sq m

Total = 307 sq ft / 28.5 sq m

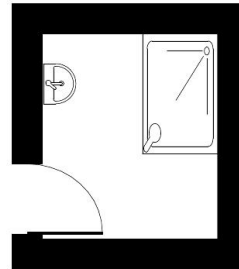
For identification only - Not to scale



First Floor



Communal WC



Communal Shower Room



Floor plan produced in accordance with RICS Property Measurement 2nd Edition, Incorporating International Property Measurement Standards (IPMS2 Residential). © nlcocom 2025. Produced for Carter Jonas. REF: 1346100

T: 01225 747250

5-6 Wood Street, Bath, Somerset, BA1 2JQ

E: bath@carterjonas.co.uk

A member of



Exclusive UK affiliate of

CHRISTIE'S
INTERNATIONAL REAL ESTATE

IMPORTANT INFORMATION

These particulars are for general information purposes only and do not represent an offer or contract or part of one. Carter Jonas or anyone in their employment has made every attempt to ensure that the particulars and other information provided are as accurate as possible and they are not intended to amount to advice on which you should rely as being factually accurate. Full information which may be relevant to your decision regarding the property can be found on the property listing on carterjonas.co.uk or a separately available material information sheet, and we would advise you to confirm the details of any material information prior to any offer being submitted. You should not assume that the property has all necessary planning, building regulations or other consents and Carter Jonas has not tested any services, facilities, or equipment. Any measurements and distances given are approximate only. Where Carter Jonas has been provided with a floorplan by a third party, we cannot guarantee that the floorplan has been measured in accordance with IPMS. Purchasers or prospective tenants must satisfy themselves of all of the aforementioned by independent inspection or otherwise. Our images only represent part of the property as it appeared at the time they were taken and do not represent the furnishings included; these are confirmed in a separate inventory. If you require further information, please contact us. *Administration fees may apply depending on tenancy type. Please contact your local branch for this information.