



GROSVENOR SQUARE, MAYFAIR, W1K
£2,500 per week*

Carter Jonas

FLAT 14, GROSVENOR SQUARE, MAYFAIR, LONDON, W1K 6LB

- 24hr Porter
- Air Conditioning
- 3 Bedrooms
- 3 Bath/Shower Rooms
- Large Reception Room
- Separate Kitchen
- Lift Access

LOCATION

Mayfair is London's most fashionable destination. With London's finest buildings, largest concentration of luxury hotels, best restaurants, bars, shopping, open spaces and hidden treasures all nestled together in a beautiful village setting.

Nearest Tube: Bond Street / Marble Arch

THE PROPERTY

This bright and spacious lateral apartment is situated on the second floor of a period building with lift and porter located on this prestigious Mayfair Square. The apartment is newly redecorated and benefits from air conditioning, 24hr porter, garden square views and wood flooring throughout.

NHA

The deposit will be £22,500 at a rental value of £3,750 (asking price).

Holding deposit = 1 weeks rent of £3,750

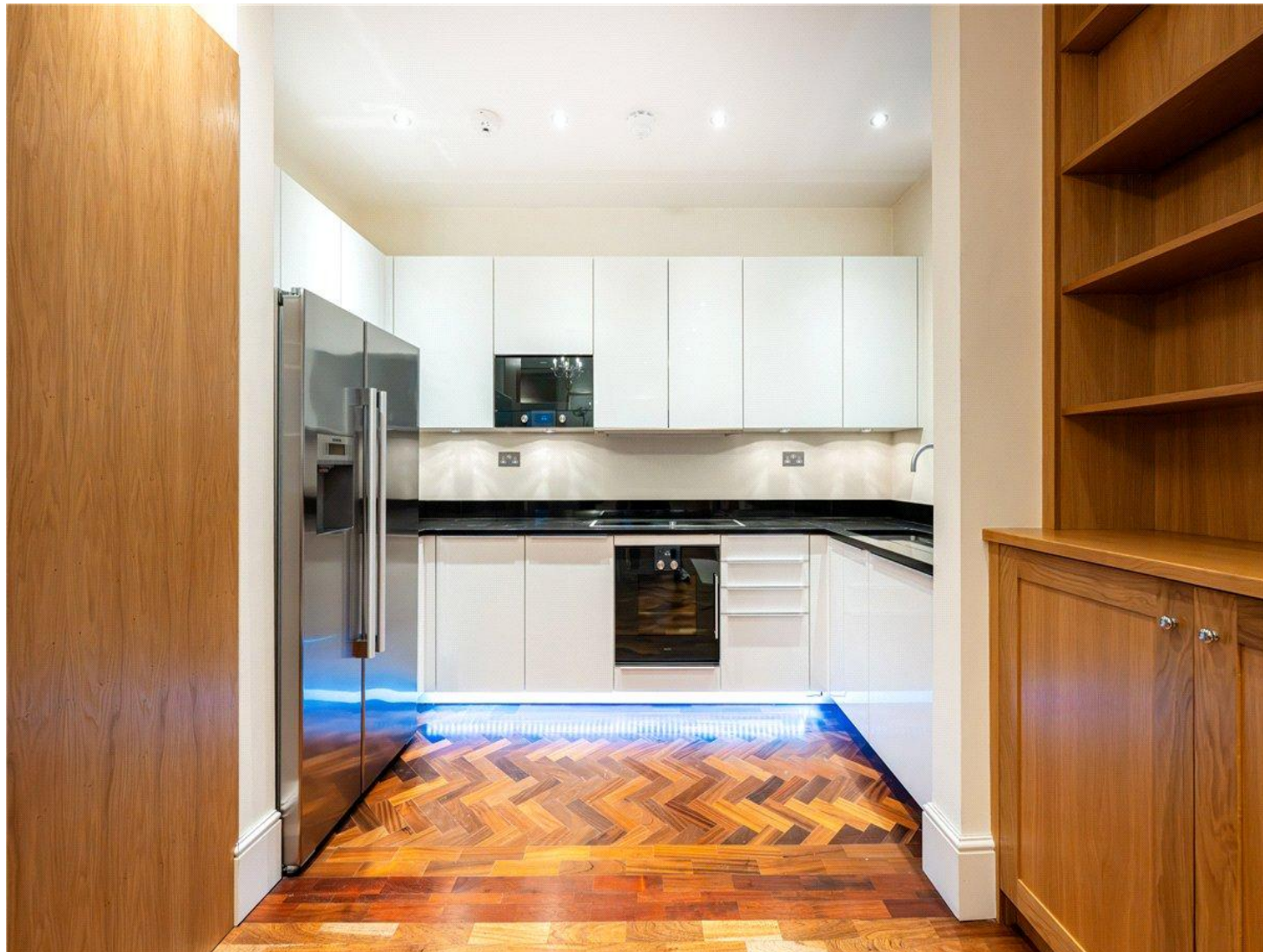
Deposit is 6 weeks rent (£3,750 pw = £22,500 deposit)

ADDITIONAL INFORMATION

Communal heating and hot water

Parking: None included with apartment / On street may be available:
<https://www.westminster.gov.uk/parking/parking-residents>

Spacious two bedroom apartment situated to the rear of this quiet building with 24hr concierge.

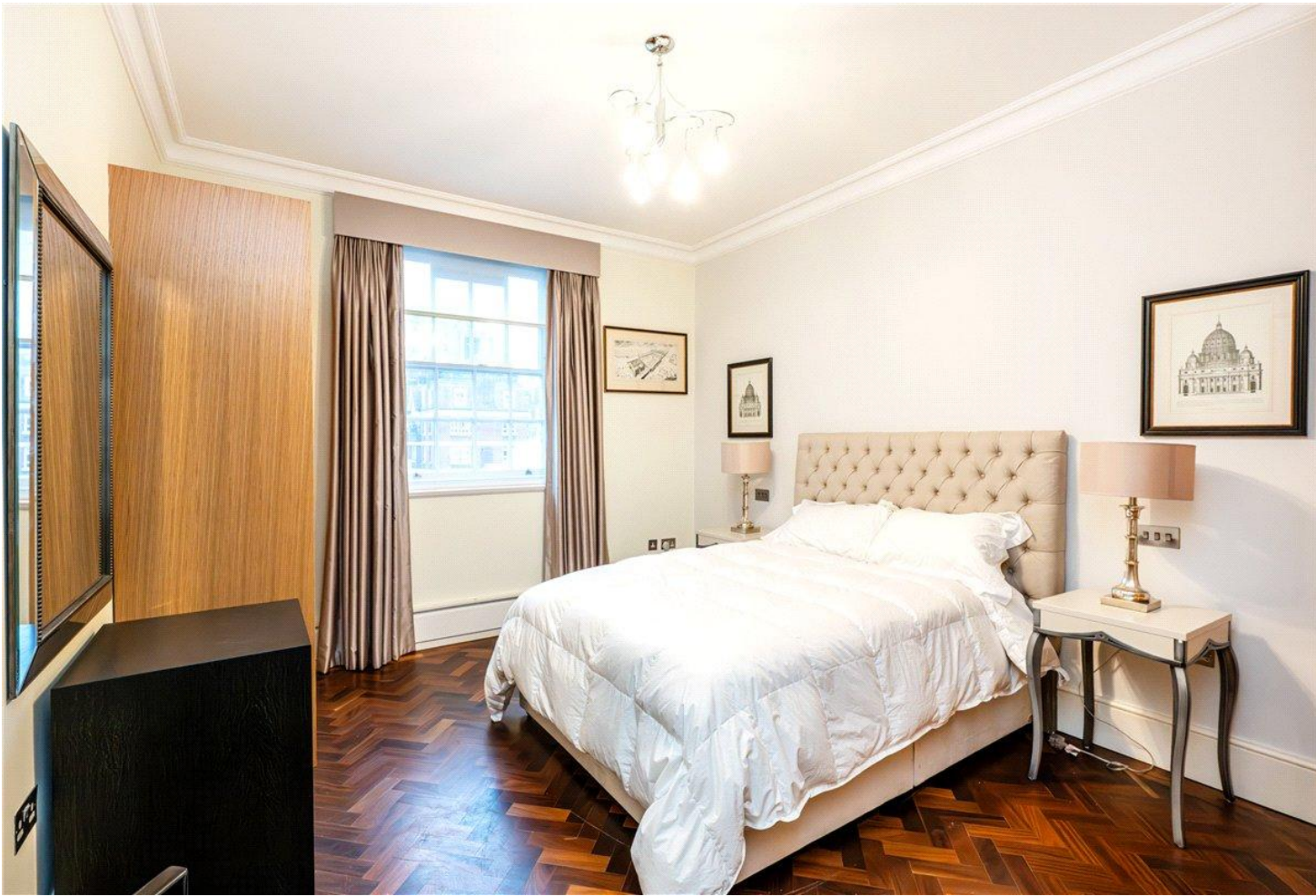


Superfast Fibre to the Cabinet broadband and mobile coverage available

Mobile phone coverage and speeds can be checked here: checker.ofcom.org.uk, however, all providers are predicted to have good levels of service inside at this property.

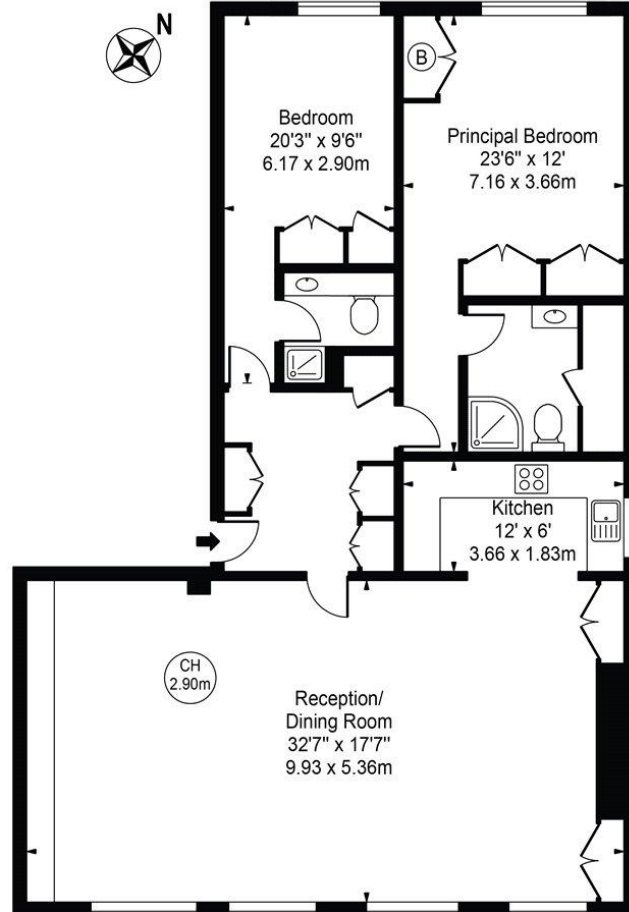
Broadband speeds can be checked here: checker.ofcom.org.uk.

Offers	Available for a minimum term of 12 months longer terms will be considered
Viewing	Strictly by appointment
Local Authority	- Council Tax Band H



Grosvenor Square

Approx. Gross Internal Area 1238 Sq Ft - 115.01 Sq M



Second Floor
For Illustration Purposes Only - Not To Scale

This floor plan should be used as a general outline for guidance only and does not constitute in whole or in part an offer or contract. Any intending purchaser or lessee should satisfy themselves by inspection, searches, enquiries and full survey as to the correctness of each statement. Any areas, measurements or distances quoted are approximate and should not be used to value a property or be the basis of any sale or let. Copyright Morriarti Photography & Design LTD



T: 020 7493 0676

18 Davies Street, Mayfair, London, W1K 3DS

E: mayfair@carterjonas.co.uk



Exclusive UK affiliate of

CHRISTIE'S
INTERNATIONAL REAL ESTATE

Classification L2 - Business Data

IMPORTANT INFORMATION

These particulars are for general information purposes only and do not represent an offer or contract or part of one. Carter Jonas or anyone in their employment has made every attempt to ensure that the particulars and other information provided are as accurate as possible and they are not intended to amount to advice on which you should rely as being factually accurate. Full information which may be relevant to your decision regarding the property can be found on the property listing on carterjonas.co.uk or a separately available material information sheet, and we would advise you to confirm the details of any material information prior to any offer being submitted. You should not assume that the property has all necessary planning, building regulations or other consents and Carter Jonas has not tested any services, facilities, or equipment. Any measurements and distances given are approximate only. Where Carter Jonas has been provided with a floorplan by a third party, we cannot guarantee that the floorplan has been measured in accordance with IPMS. Purchasers or prospective tenants must satisfy themselves of all of the aforementioned by independent inspection or otherwise. Our images only represent part of the property as it appeared at the time they were taken and do not represent the furnishings included; these are confirmed in a separate inventory. If you require further information, please contact us. *Administration fees may apply depending on tenancy type. Please contact your local branch for this information.