



**WILTON,
MARLBOROUGH**

Carter Jonas

HIDEAWAY COTTAGE, WILTON, MARLBOROUGH, WILTSHIRE, SN8 3SS

AMENITIES

- Three Bedrooms
- Two bathrooms
- Charming garden
- Home Office / Studio
- Driveway Parking
- Village Location

DESCRIPTION

Located in a secluded position in the heart of this most popular of Wiltshire villages, Hideaway Cottage is a charming three-bedroom house with a detached home office/garden room at the rear of the garden.

At 1357 square feet, the house enjoys great proportions and is presented to a high standard throughout. The welcoming entrance hall leads off to the modern kitchen / breakfast room, which has been cleverly designed with a good range of fitted units.

The sitting room is a spacious yet cosy space, overlooking the garden and centred around the woodburning stove. This room has a lovely, comfortable feel and leads seamlessly through to the conservatory and garden beyond. The ground floor accommodation is completed by the study and cloakroom.

Heading upstairs, there is a truly impressive principal bedroom overlooking the garden with exposed beams and a vaulted ceiling, complete with an en-suite shower room and generous fitted wardrobes. It also enjoys full length windows which open out onto a glazed balcony. There are two further bedrooms (one double and one single) which are served by the well-appointed family bathroom. In addition, there is a large and very handy boarded loft, offering excellent additional storage.

OUTSIDE

The cottage is approached across a shared drive through iron gates to its own private driveway, offering ample space for parking.

The gardens are mainly set across a small stream, accessed by a wooden bridge, and principally laid to lawn with a range of mature trees and shrubs. At the rear is an extremely useful and spacious garden room, which makes an ideal home office in this peaceful setting. Outside, there is a decked terrace offering the perfect place for entertaining and beneath is a timber outbuilding, great for garden/bike storage with power and water, including a w.c.

Should there be the need for more space, it should be noted that there is lapsed planning permission for a one-bedroom annexe on the driveway (<https://development.wiltshire.gov.uk/pr/s/planning-application/a0i3z000014dZ47AAE/k58378f>).

A CHARMING THREE BEDROOM COTTAGE WITH STUNNING GARDENS AND DRIVEWAY PARKING IN THE HIGHLY DESIRABLE VILLAGE OF WILTON.



SITUATION

Hideaway Cottage is situated in the popular village of Wilton, in the North Downs Area of Outstanding Natural Beauty, surrounded by wonderful countryside offering fantastic walking, riding, cycling and other country pursuits. The village is positioned on the edge of the Savernake Forest and the Kennet and Avon Canal and offers a vibrant village community with the popular local public house, The Swan. The neighbouring village of Great Bedwyn provides a range of local facilities including a village shop, post office, primary school, doctors' surgery, hairdressers, tennis club and pub. There is also the mainline train station with free parking offering direct trains to London Paddington (about 58 minutes). Trains to Paddington also run from Hungerford and Pewsey (both 7 miles) and Newbury (16 miles), whilst London Waterloo can be accessed from Andover (13 miles, about 63 minutes). There is also easy access to the M4. The nearby towns of Marlborough and Hungerford are within easy reach, and both provide an excellent range of retail and other facilities. A wide range of schooling options are available in the area including St Francis Pewsey, Great Bedwyn Primary School, St Katherine's Primary School, Farleigh, Pinewood, St John's Marlborough, Marlborough College and Dauntsey's.

GUIDE PRICE: £575,000 (Subject to Contract)

VIEWING ARRANGEMENTS: By appointment with the Marlborough Office

Classification L2 - Business Data



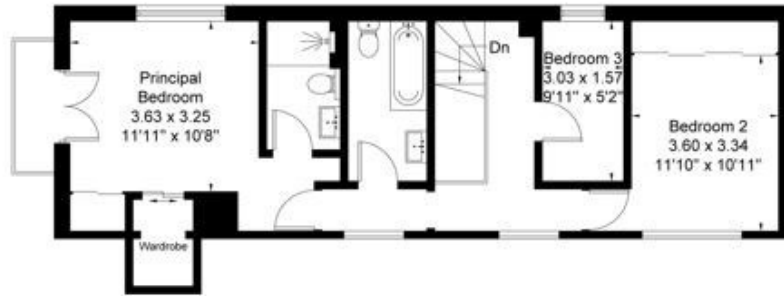
Classification L2 - Business Data

Grafton Road, Wilton, SN8
 Approximate Area = 1357 sq ft / 126.1 sq m
 Garden Room = 159 sq ft / 14.8 sq m
 Total = 1516 sq ft / 140.9 sq m
 Including Limited Use Area (15 sq ft / 1.4 sq m)

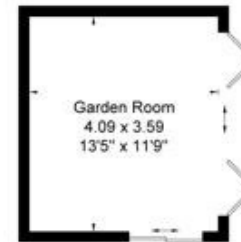


SERVICES AND MATERIAL INFORMATION

- Freehold
- Mains water, mains drainage. Oil fired central heating.
- Council tax band: D
- Energy efficiency rating: D
- Broadband and mobile coverage. Please refer to Ofcom website for further details



First Floor



(Not Shown In Actual Location / Orientation)



Ground Floor



(Not Shown In Actual Location / Orientation)

Surveyed and drawn in accordance with the International Property Measurement Standards
 fourwalls-group.com 316464

Marlborough 01672 514 916
 93 High Street, Marlborough, SN8 1HD

carterjonas.co.uk
 Offices throughout the UK

Exclusive UK affiliate of
CHRISTIE'S
 INTERNATIONAL REAL ESTATE

IMPORTANT INFORMATION

These particulars are for general information purposes only and do not represent an offer or contract or part of one. Carter Jonas or anyone in their employment has made every attempt to ensure that the particulars and other information provided are as accurate as possible and they are not intended to amount to advice on which you should rely as being factually accurate. Full information which may be relevant to your decision regarding the property can be found on the property listing on carterjonas.co.uk or, (including off market properties) on the brochure or a separately available material information sheet. We would advise you to confirm the details of any material information prior to any offer being submitted. You should not assume that the property has all necessary planning, building regulations or other consents and Carter Jonas has not tested any services, facilities or equipment. Any measurements and distances given are approximate only. Where Carter Jonas has been provided with a floorplan by a third party, we cannot guarantee that the floorplan has been measured in accordance with IPMS. Purchasers must satisfy themselves of all of the aforementioned by independent inspection or otherwise. Our images only represent part of the property as it appeared at the time they were taken and do not represent the furnishings included; these are confirmed in a separate inventory. If you require further information, please contact us.

Classification L2 - Business Data