



LILLIE ROAD, LONDON, SW6  
£375,000

Carter Jonas

# LILLIE ROAD, LONDON, SW6

**A SUPERBLY LOCATED BRIGHT TOP FLOOR FLAT WITH SOUTH FACING GARDEN.**

A bright and spacious upper-floor conversion flat, featuring a well-proportioned open-plan kitchen, dining and reception room, a modern bathroom, and a double bedroom. Unusually for a property of this type, it also benefits from access to a generously sized south-facing garden

Lillie Road is set in the heart of Fulham, offering leafy streets, boutique shops, and a vibrant dining scene. Residents enjoy easy access to green spaces such as Bishops Park and Eel Brook Common, as well as riverside walks along the Thames.

The area boasts excellent transport links, with Earls Court Underground Station (Picadilly and District Lines) 0.5 miles away and West Brompton Station (District and Overground Lines) is 0.3 miles away, plus numerous bus routes for quick connections across London.



## AMENITIES

- 1 Bedroom
- 1 Bathroom
- 1 Reception Room
- Private South Facing Garden

**TENURE** Leasehold

**LOCAL AUTHORITY** Hammersmith and Fulham


**EPC BAND** D

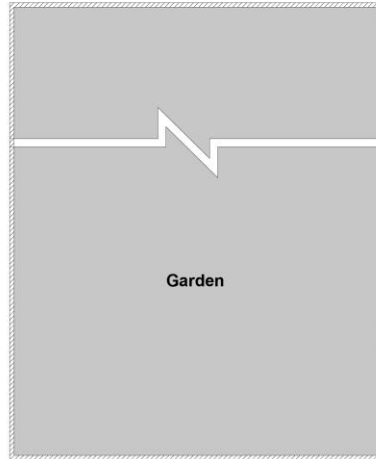




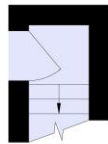
# Lillie Road, SW6

Approximate Floor Area = 44.85 sq m / 483 sq ft

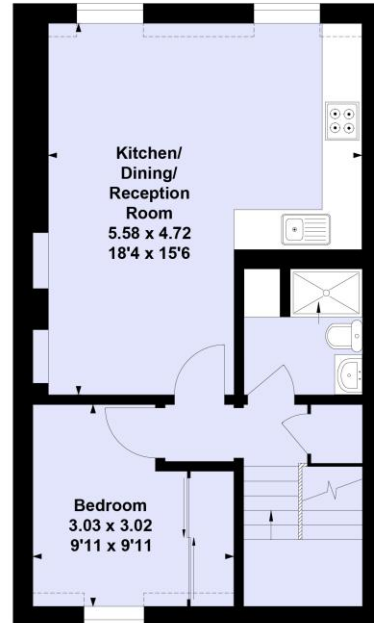
 = Reduced head height below 1.5m



Garden



Second Floor



Third Floor

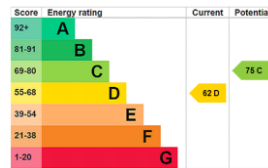
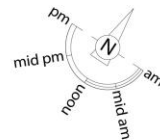
Kitchen/  
Dining/  
Reception  
Room  
5.58 x 4.72  
18'4 x 15'6

Bedroom  
3.03 x 3.02  
9'11 x 9'11

This floor plan has been prepared in accordance with the RICS Property Measurement Standards. All measurements are approximate and for illustrative purposes only.

**Carter Jonas**

Exclusive UK affiliate of  
**CHRISTIE'S**  
INTERNATIONAL REAL ESTATE



Fulham 020 7731 3333

bishopspark@carterjonas.co.uk  
361 Fulham Palace Road, London, SW6 6TA

**carterjonas.co.uk**  
Offices throughout the UK

Classification L2 - Business Data



## IMPORTANT INFORMATION

*These particulars are for general information purposes only and do not represent an offer or contract or part of one. Carter Jonas or anyone in their employment has made every attempt to ensure that the particulars and other information provided are as accurate as possible and they are not intended to amount to advice on which you should rely as being factually accurate. Full information which may be relevant to your decision regarding the property can be found on the property listing on [carterjonas.co.uk](http://carterjonas.co.uk) or, (including off market properties) on the brochure or a separately available material information sheet. We would advise you to confirm the details of any material information prior to any offer being submitted. You should not assume that the property has all necessary planning, building regulations or other consents and Carter Jonas has not tested any services, facilities or equipment. Any measurements and distances given are approximate only. Where Carter Jonas has been provided with a floorplan by a third party, we cannot guarantee that the floorplan has been measured in accordance with IPMS. Purchasers must satisfy themselves of all of the aforementioned by independent inspection or otherwise. Our images only represent part of the property as it appeared at the time they were taken and do not represent the furnishings included; these are confirmed in a separate inventory. If you require further information, please contact us.*

Exclusive UK affiliate of  
**CHRISTIE'S**  
INTERNATIONAL REAL ESTATE