



PARK STREET, LONDON, SW6
£600,000

Carter Jonas

PARK STREET, LONDON, SW6

The accommodation includes an entrance hallway, bedroom with built-in storage, bathroom, immaculate open-plan kitchen/reception room with Miele appliances and access to a private south facing balcony.

Residents of Chelsea Creek enjoy access to beautifully landscaped communal gardens, tranquil waterways, and tree-lined avenues. Additional amenities include a 24-hour concierge service, a swimming pool, a residents' gym, and a spa. The property also comes with an allocated parking space.

Additional information:

We have been informed that the primary external wall materials of the building/block have been assessed for fire safety. The assessor concluded that the fire risk of the external wall materials is sufficiently low that no remedial works are required. If you have any further questions, you should seek independent professional advice.

One of London's most distinguished dockside developments offering a blend of luxury and city living, with picturesque views of waterways, tree-lined avenues, and landscaped parkland. Situated just moments from the boutiques, cafes, restaurants and amenities of King's Road and Parson Green. Chelsea Creek offers excellent transport links, including Imperial Wharf station, a nearby taxi rank, and riverboat services. There are numerous bus routes running in the area and Fulham Broadway Underground Station (District Line) is 0.7 miles, offering convenient access and connectivity across London.

AMENITIES

- 1 Bedroom
- 1 Bathroom
- Open Plan Reception/Kitchen Area
- Balcony
- Lift

TENURE Leasehold

LOCAL AUTHORITY Hammersmith and Fulham

EPC BAND B

A MODERN ONE-BEDROOM APARTMENT SITUATED ON THE 4TH FLOOR (WITH LIFT) OFFERING 725 SQ. FT OF WELL-APPOINTED LIVING SPACE.

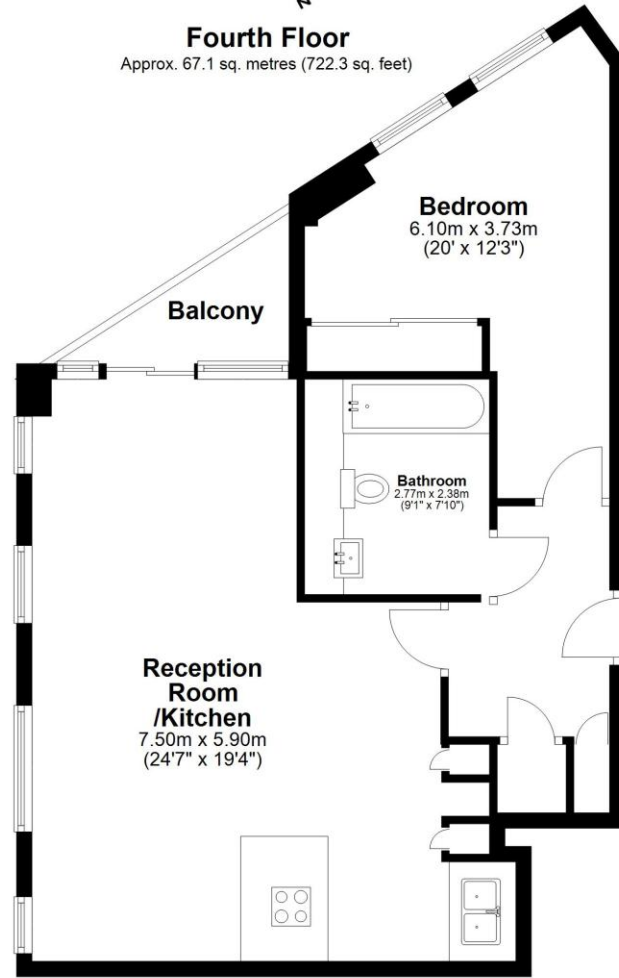






Fourth Floor

Approx. 67.1 sq. metres (722.3 sq. feet)



Bedroom
6.10m x 3.73m
(20' x 12'3")

Balcony

Bathroom
2.77m x 2.38m
(9'1" x 7'10")

Reception Room /Kitchen
7.50m x 5.90m
(24'7" x 19'4")

Total area: approx. 67.1 sq. metres (722.3 sq. feet)

Chelsea Creek

Score	Energy rating	Current	Potential
92+	A		
81-91	B	84 B	84 B
69-80	C		
55-68	D		
39-54	E		
21-38	F		
1-20	G		

Fulham 020 7731 3333

bishopspark@carterjonas.co.uk
361 Fulham Palace Road, London, SW6 6TA

carterjonas.co.uk
Offices throughout the UK

Exclusive UK affiliate of

CHRISTIE'S
INTERNATIONAL REAL ESTATE

IMPORTANT INFORMATION

These particulars are for general information purposes only and do not represent an offer or contract or part of one. Carter Jonas or anyone in their employment has made every attempt to ensure that the particulars and other information provided are as accurate as possible and they are not intended to amount to advice on which you should rely as being factually accurate. Full information which may be relevant to your decision regarding the property can be found on the property listing on carterjonas.co.uk or, (including off market properties) on the brochure or a separately available material information sheet. We would advise you to confirm the details of any material information prior to any offer being submitted. You should not assume that the property has all necessary planning, building regulations or other consents and Carter Jonas has not tested any services, facilities or equipment. Any measurements and distances given are approximate only. Where Carter Jonas has been provided with a floorplan by a third party, we cannot guarantee that the floorplan has been measured in accordance with IPMS. Purchasers must satisfy themselves of all of the aforementioned by independent inspection or otherwise. Our images only represent part of the property as it appeared at the time they were taken and do not represent the furnishings included; these are confirmed in a separate inventory. If you require further information, please contact us.