



**MANNINGFORD BRUCE, SN9**  
£1,300 per month\*

**Carter Jonas**



## PEWSEY, WILTSHIRE, SN9

- Kitchen/Breakfast Room
- Sitting Room
- Bathroom
- Three Bedrooms
- Outbuildings
- Garden
- Parking

This thatched cottage is a charming end of terrace thatched cottage, situated close to the pretty Norman church.

The downstairs accommodation consists of a spacious eat in kitchen and large sitting room with open fire and downstairs bathroom. There is also a useful store with power and utility plumbing.

Upstairs are three good sized bedrooms.

There is parking for 2 cars and side access to the garden at the rear of the property, which is mainly laid to lawn. There is a log store and outbuilding.

Available for an initial 12 month tenancy.

EPC Rating E.

Council Tax Band D (Wiltshire Council website for current cost)

Mains electric and metered mains water. Oil central heating and septic tank drainage.

The tenant will be responsible for the annual cost of emptying the septic tank, which will be charged by the partnership

Internet & Mobile: Further information on availability and speeds can be found on the Ofcom website.

**A charming three-bedroom end of terrace thatched cottage with garden and parking.**





Thatched roof

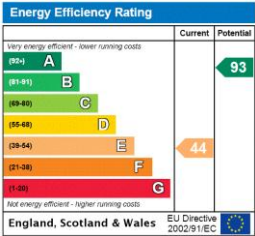
At a rent of £1,300.00 per calendar month:

Holding deposit of 1 week's rent £300.00

Security deposit of 5 weeks rent £1,500.00

ADDITIONAL INFORMATION

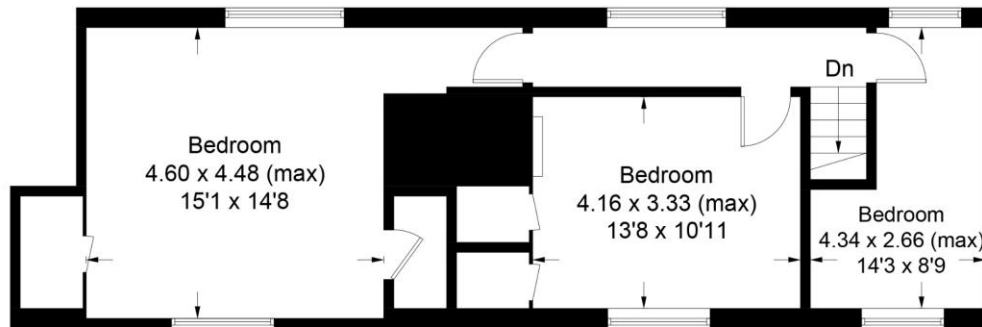
Offers	Available for a minimum term of 12 months longer terms will be considered
Viewing	Strictly by appointment
Local Authority	Wiltshire Council - Council Tax Band D



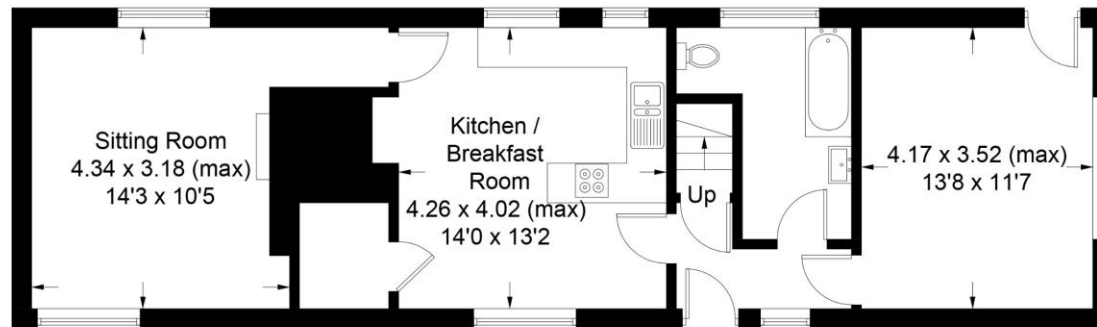


## Old Post Office Cottages

Approximate Gross Internal Area = 128.6 sq m / 1384 sq ft



**First Floor**



**Ground Floor**

Illustration for identification purposes only, measurements are approximate, not to scale. (ID637772)



**T: 01672 519700**

93-94 High Street, Marlborough, Wiltshire, SN8 1HD

E: marlborough@carterjonas.co.uk

A member of



*Exclusive UK affiliate of*

**CHRISTIE'S**  
INTERNATIONAL REAL ESTATE

Classification L2 - Business Data

### IMPORTANT INFORMATION

These particulars are for general information purposes only and do not represent an offer or contract or part of one. Carter Jonas or anyone in their employment has made every attempt to ensure that the particulars and other information provided are as accurate as possible and they are not intended to amount to advice on which you should rely as being factually accurate. Full information which may be relevant to your decision regarding the property can be found on the property listing on [carterjonas.co.uk](http://carterjonas.co.uk) or a separately available material information sheet, and we would advise you to confirm the details of any material information prior to any offer being submitted. You should not assume that the property has all necessary planning, building regulations or other consents and Carter Jonas has not tested any services, facilities, or equipment. Any measurements and distances given are approximate only. Where Carter Jonas has been provided with a floorplan by a third party, we cannot guarantee that the floorplan has been measured in accordance with IPMS. Purchasers or prospective tenants must satisfy themselves of all of the aforementioned by independent inspection or otherwise. Our images only represent part of the property as it appeared at the time they were taken and do not represent the furnishings included; these are confirmed in a separate inventory. If you require further information, please contact us. \*Administration fees may apply depending on tenancy type. Please contact your local branch for this information.