



HOLLAND PARK ROAD, HOLLAND PARK, W14

£1,750,000

Carter Jonas

HOLLAND PARK ROAD, W14

A rare opportunity to own a period conversion duplex situated on the favoured first and second floor of this beautiful mid-terrace south-facing building in the heart of Holland Park. Conveniently positioned not only moments away from the diverse amenities of High St Kensington but also the green spaces of the Park itself. Thanks to the extensive period features such as high ceilings, large windows at the front and the rear as well as wood flooring throughout it is a beautiful and bright space where the owner has sympathetically and extensively modernised it so it is ready to move straight in!

Large reception, fully fitted kitchen/breakfast room, principal double bedroom with walk-in wardrobe and en-suite shower room, 2nd double bedroom with en-suite bathroom, cloakroom. Wood floors throughout.

n.b. some of the photos have been virtually staged using CGIs for marketing purposes.

Long Lease plus Share of Freehold
Service charge c.£2000 per annum
Ground rent - not applicable
Sinking fund - not applicable

Royal Borough of Kensington & Chelsea - Council tax band: G

For the latest information on broadband and mobile coverage, please visit Ofcom's website <https://checker.ofcom.org.uk/en-gb/broadband-coverage>.

For eligibility for resident parking permits, please refer to the RBKC website <https://www.rbkc.gov.uk/parking-transport-and-streets/visitor-parking-and-pay-phone/guide-parking> for further details.

AMENITIES

- 1st & 2nd floor duplex
- 2 Double bedrooms
- 2 Bath or shower rooms
- c.1080 sq ft
- Share of Freehold
- Period conversion
- Closest underground station: High Street Kensington

TENURE Share of Freehold

LOCAL AUTHORITY RBKC

EPC BAND C

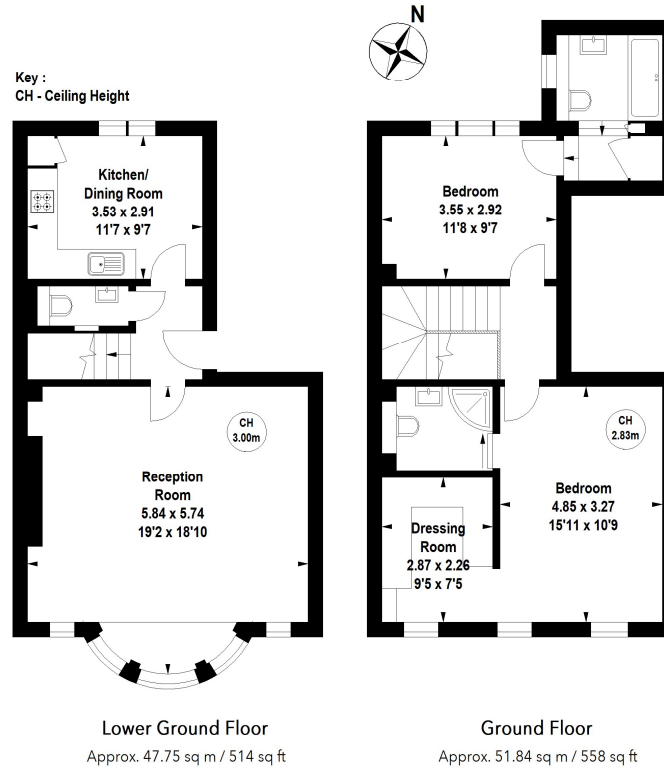
Score	Energy rating	Current	Potential
92+	A		
81-91	B		
69-80	C		
55-68	D		
39-54	E		
21-38	F		
1-20	G		
		71 C	81 B





Holland Park Road, W14

Approximate Area = 99.59 sq m / 1072 sq ft



The floor plan is not to scale and measurements and areas shown are approximate and therefore should be used for illustrative purposes only. The plan has been prepared in accordance with the RICS code of Measuring Practice and whilst we have confidence in the information produced, it must not be relied on. If there is any aspect of particular importance, you should carry out or commission your own inspection of the property.

Kensington & Chelsea 020 7584 7020

chelsea@carterjonas.co.uk
25-27 Harrington Road, London, SW7 3EU

carterjonas.co.uk
Offices throughout the UK

Exclusive UK affiliate of
CHRISTIE'S
INTERNATIONAL REAL ESTATE

IMPORTANT INFORMATION

These particulars are for general information purposes only and do not represent an offer or contract or part of one. Carter Jonas or anyone in their employment has made every attempt to ensure that the particulars and other information provided are as accurate as possible and they are not intended to amount to advice on which you should rely as being factually accurate. Full information which may be relevant to your decision regarding the property can be found on the property listing on carterjonas.co.uk or, (including off market properties) on the brochure or a separately available material information sheet. We would advise you to confirm the details of any material information prior to any offer being submitted. You should not assume that the property has all necessary planning, building regulations or other consents and Carter Jonas has not tested any services, facilities or equipment. Any measurements and distances given are approximate only. Where Carter Jonas has been provided with a floorplan by a third party, we cannot guarantee that the floorplan has been measured in accordance with IPMS. Purchasers must satisfy themselves of all of the aforementioned by independent inspection or otherwise. Our images only represent part of the property as it appeared at the time they were taken and do not represent the furnishings included; these are confirmed in a separate inventory. If you require further information, please contact us.