



**CADOGAN SQUARE, KNIGHTSBRIDGE, SW1X**  
£6000 per month\*

**Carter Jonas**

## CADOGAN SQUARE, SW1X

New to the lettings market and available now! A smart furnished two bedroom, two bathroom flat with patio area. EPC rating: C Located on the western side of this beautiful square enviably positioned on the Knightsbridge/Chelsea borders within easy walking distance of Sloane Street, Sloane Square, the Kings Road and of course the world call restaurants and Harrods.

Reception/dining room, kitchen, double bedroom with en-suite bathroom, 2nd bedroom with en-suite shower room. Patio. Furnished Minimum 12 month term

Holding deposit is 1 week's rent

Security deposit is 6 week's rent

Royal Borough of Kensington & Chelsea - Council tax band: G

For the latest information on broadband and mobile coverage, please visit Ofcom's website <https://checker.ofcom.org.uk/en-gb/broadband-coverage>.

For eligibility for resident parking permits, please refer to the RBKC website <https://www.rbkc.gov.uk/parking-transport-and-streets/visitor-parking-and-pay-phone/guide-parking> for further details.

- Council Tax Band = G
- Deposit Required = £9,000.00
- Long Let, Minimum term 12 months
- Furnished
- 2 Bedrooms
- 2 Bathrooms
- Patio
- c. 940 sq ft internal space
- Closest

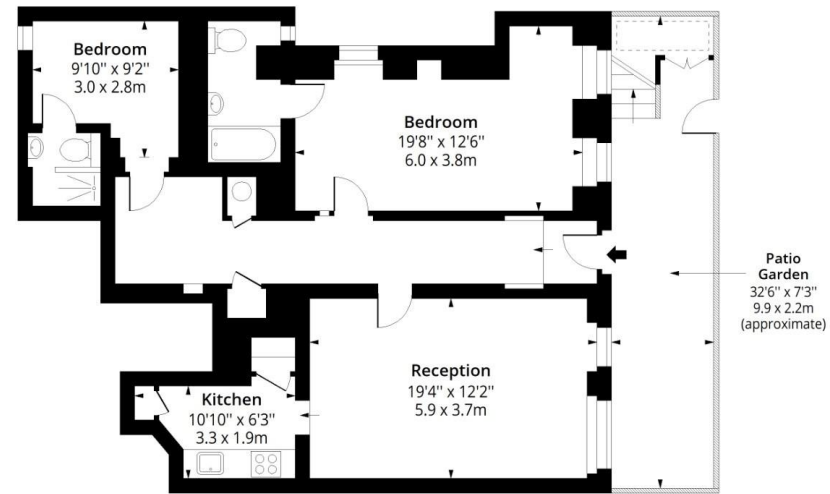
underground:  
Knightsbridge &  
Sloane Square

- EPC = C

Score	Energy rating	Current	Potential
92+	A		
81-91	B		
69-80	C	72 C	79 C
55-68	D		
39-54	E		
21-38	F		
1-20	G		

## Cadogan Square, SW1X

Approx. Gross Internal Area 942 Sq Ft - 87.5 Sq M



### Ground Floor

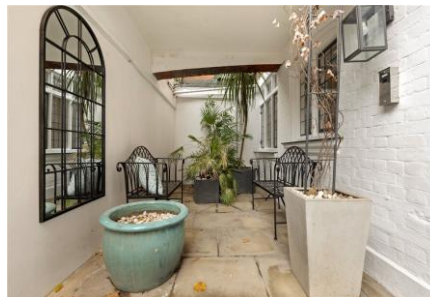
Floor Area 942 Sq Ft - 87.5 Sq M



Measured according to RICS IPMS2. Floor plan is for illustrative purposes only and is not to scale. Every attempt has been made to ensure the accuracy of the floor plan shown, however all measurements, fixtures, fittings and data shown are an approximate interpretation for illustrative purposes only. 1 sq m = 10.76 sq feet.

lpaplus.com

Date: 10/31/2025



Kensington & Chelsea Lettings 020 7584 7020

chelsea@carterjonas.co.uk

25-27 Harrington Road, London, SW7 3EU



Exclusive UK affiliate of

**CHRISTIE'S**  
INTERNATIONAL REAL ESTATE

Classification L2 - Business Data

### IMPORTANT INFORMATION

These particulars are for general information purposes only and do not represent an offer or contract or part of one. Carter Jonas or anyone in their employment has made every attempt to ensure that the particulars and other information provided are as accurate as possible and they are not intended to amount to advice on which you should rely as being factually accurate. Full information which may be relevant to your decision regarding the property can be found on the property listing on [carterjonas.co.uk](http://carterjonas.co.uk) or a separately available material information sheet, and we would advise you to confirm the details of any material information prior to any offer being submitted. You should not assume that the property has all necessary planning, building regulations or other consents and Carter Jonas has not tested any services, facilities, or equipment. Any measurements and distances given are approximate only. Where Carter Jonas has been provided with a floorplan by a third party, we cannot guarantee that the floorplan has been measured in accordance with IPMS. Purchasers or prospective tenants must satisfy themselves of all of the aforementioned by independent inspection or otherwise. Our images only represent part of the property as it appeared at the time they were taken and do not represent the furnishings included; these are confirmed in a separate inventory. If you require further information, please contact us. \*Administration fees may apply depending on tenancy type. Please contact your local branch for this information.