



**WOODLAWN ROAD, LONDON, SW6**  
£3,500 per month\*

**Carter Jonas**



# GFF, WOODLAWN ROAD, LONDON, SW6 6PS

An exceptional two double bedroom garden flat in a period conversion on the popular Alphabet Streets close to Bishops Park. EPC rating D

- 2 Double Bedrooms
- Reception Room
- Open Plan Kitchen
- Bathroom
- Good Storage
- Private Garden

## LOCATION

## THE PROPERTY

A beautiful two bedroom, one bathroom flat on the ground floor of this quiet and residential area of Fulham. The flat benefits from a spacious private garden and big open open plan kitchen / reception room which is flooded with natural light.

The bathroom has a bathtub and a separate shower.

Woodlawn Road is situated in the sought after Alphabet streets of the Bishops Park Estate. Running parallel to Fulham Palace Road and the River Thames, it is conveniently located to take advantage of Fulham's recently refurbished, tranquil Bishops Park and the local area's shops, restaurants and sports facilities (tennis courts and gym). Transport links of Hammersmith Broadway (Circle, Hammersmith & City, Piccadilly and District lines) and Putney Bridge (District line) in close proximity.

Minimum term: 12 months

Council tax band: E

## OUTSIDE

Garden





---

## ADDITIONAL INFORMATION

---

Offers	Available for a minimum term of 12 months longer terms will be considered
--------	---------------------------------------------------------------------------

---

Viewing	Strictly by appointment
---------	-------------------------

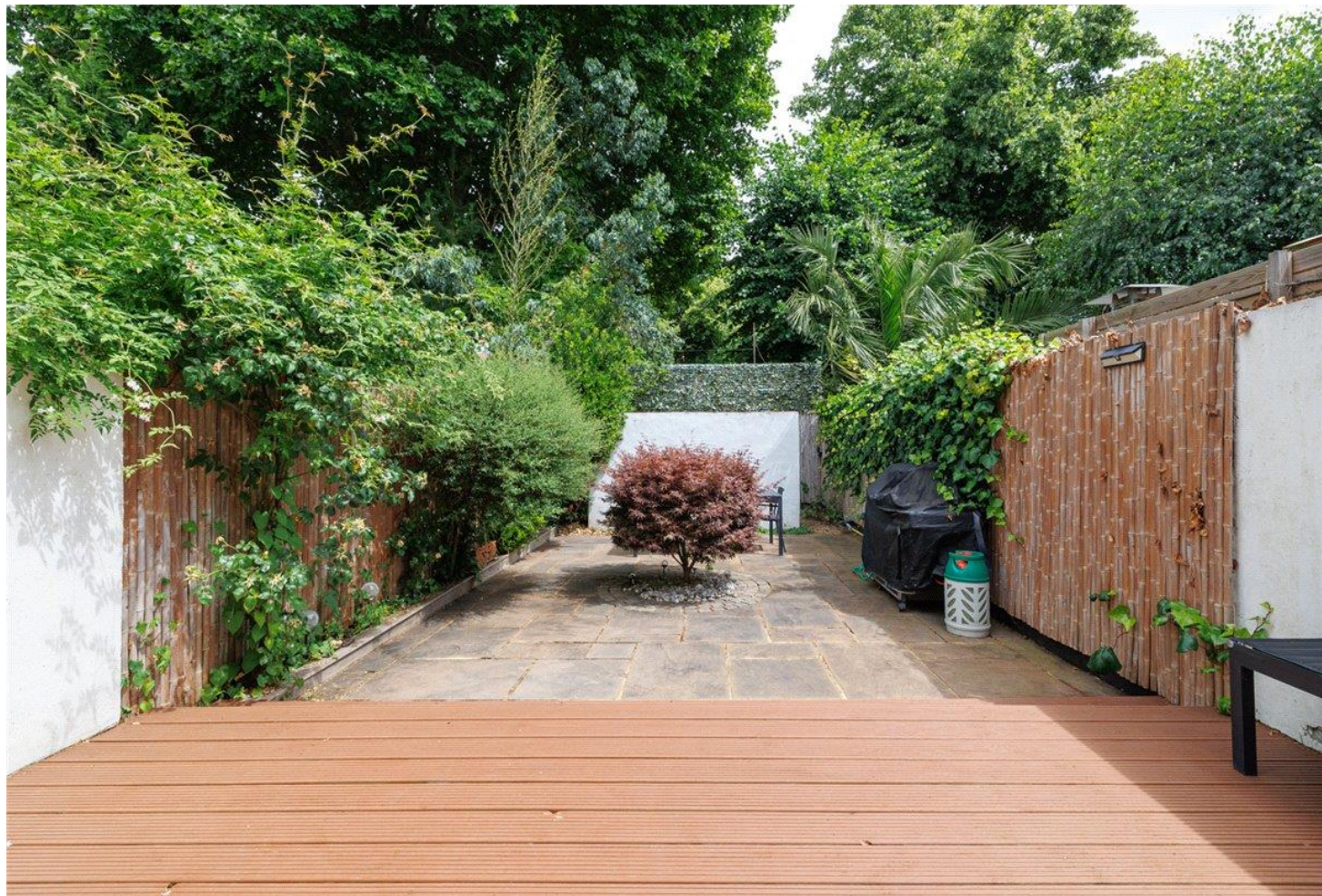
---

Local Authority	Hammersmith and Fulham - Council Tax Band E
-----------------	---------------------------------------------

---

Directions	
------------	--

---

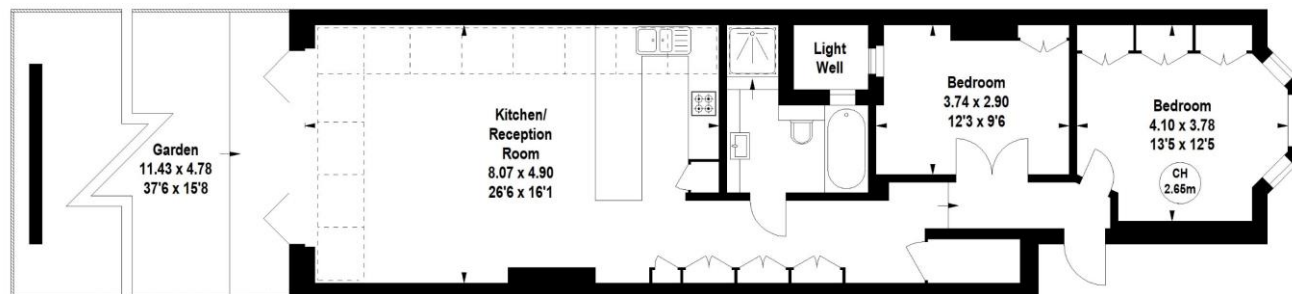




**Woodlawn Road, SW6**  
Approximate Area = 84.82 sq m / 913 sq ft

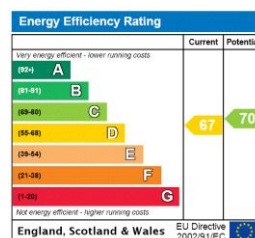


Key :  
CH - Ceiling Height



**Ground Floor**

Illustration For Identification Purposes Only.  
All measurements and areas are approximate, not to scale.



**T: 020 7751 8898**

361 Fulham Palace Road, London, SW6 6TA

E: [parsonsgreen.residential.lettings@carterjonas.co.uk](mailto:parsonsgreen.residential.lettings@carterjonas.co.uk)

**carterjonas.co.uk**  
Offices throughout the UK

A member of  
**onTheMarket.com**

Classification L2 - Business Data

**IMPORTANT INFORMATION**

Our property particulars do not represent an offer or contract, or part of one. The information given is without responsibility on the part of the agents, seller(s) or lessor(s) and you should not rely on the information as being factually accurate about the property, its condition or its value. Neither Carter Jonas LLP nor anyone in its employment or acting on its behalf has authority to make any representation or warranty in relation to this property. We have not carried out a detailed survey, nor tested the services, appliances or fittings at the property. The images shown may only represent part of the property and are as they appeared at the time of being photographed. The areas, measurements and distances are approximate only. Where Carter Jonas have been provided with a floorplan by a third party, we can not guarantee that the floorplan has been measured in accordance with IPMS. Any reference to alterations or use does not mean that any necessary planning permission, building regulation or other consent has been obtained. The VAT position relating to the property may change without notice. Administration fees may apply depending on tenancy type. Please contact your local branch for this information.