

CAMOYS COURT
CHISELHAMPTON, OXFORDSHIRE

Carter Jonas

**Camoy's Court
Clifton Hampden Road
Chiselhampton
Oxfordshire
OX44 7UZ**

**An exceptional Grade II* listed
country house with stables
and land.**

Camoy's Court represents a unique opportunity to acquire a historically important country house, offering substantial accommodation, extensive land, and excellent accessibility to Oxford and London.

In all extending to 51.24 acres (20.73 ha).

For sale by private treaty as a whole.



Location

Chiselhampton is an attractive and well-regarded Oxfordshire village, surrounded by open countryside and offering immediate access to a network of footpaths and bridleways.

The property is particularly well located for Oxford, which lies approximately 9 miles to the north-west, providing an extensive range of cultural, educational and shopping amenities.

Communication links are excellent, with rail services available from:

- Didcot Parkway (London Paddington from approx. 37 minutes)
- Haddenham & Thame Parkway (London Marylebone from approx. 37 minutes)

The M40 (J7) is also easily accessible.

There is a good selection of state and independent schools within the area.

Amenities

Nearby amenities include:

- Village public house in Chiselhampton
- Wider facilities in neighbouring Stadhampton, including a shop, restaurant, petrol station and primary school
- Renowned dining destinations including Le Manoir aux Quat'Saisons

The surrounding area is well known for its scenic countryside, riverside walks and access to Oxfordshire's highly regarded leisure and cultural attractions.

Property

Set in a peaceful and highly desirable edge-of-village position, Camoys Court is an exceptional Grade II* listed residence of notable historic significance. Believed to date from the 14th century, the house has evolved over time into a distinguished and highly adaptable family home.

The current owners have undertaken an extensive and thoughtful programme of restoration, successfully marrying the building's architectural heritage with the requirements of modern living. The result is a beautifully balanced home, combining period character with contemporary comfort.

Approached via a long, sweeping private drive, the house enjoys a secluded setting within approximately 51 acres of gardens and grounds, including formal lawns, paddocks and arable land. The property benefits from frontage to the River Thame, with associated fishing rights, and includes a modern stable complex, making it particularly well suited to equestrian or lifestyle use.

This is a rare opportunity to acquire a significant historic house in an accessible Oxfordshire location.

Accommodation

The accommodation is arranged over multiple floors and extends to approximately 9,100 sq ft in total, including outbuildings.

The principal house offers well-proportioned and versatile living space, including:

- Five reception rooms
- Five bedrooms
- Six bath/shower rooms
- Gym

The layout provides a natural flow for both formal entertaining and family life, with a number of character features retained throughout, reflecting the property's long history.



Floorplan

Approximate Gross Internal Area:
5600 Sq Ft / 520 Sq M



For illustrative purposes only - not to scale.
The position & size of doors, windows, appliances
and other features are approximate only.



Garden and Grounds

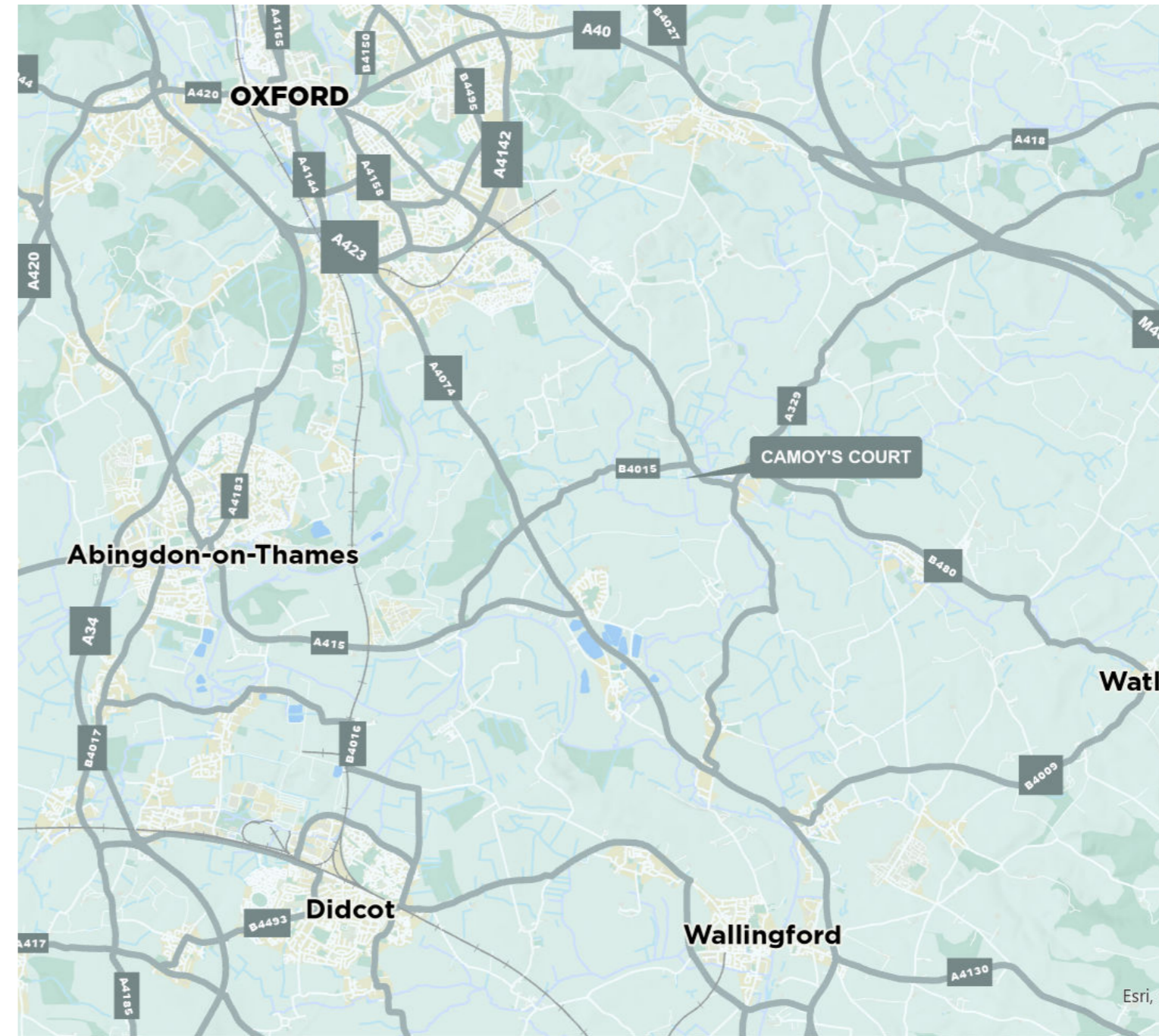
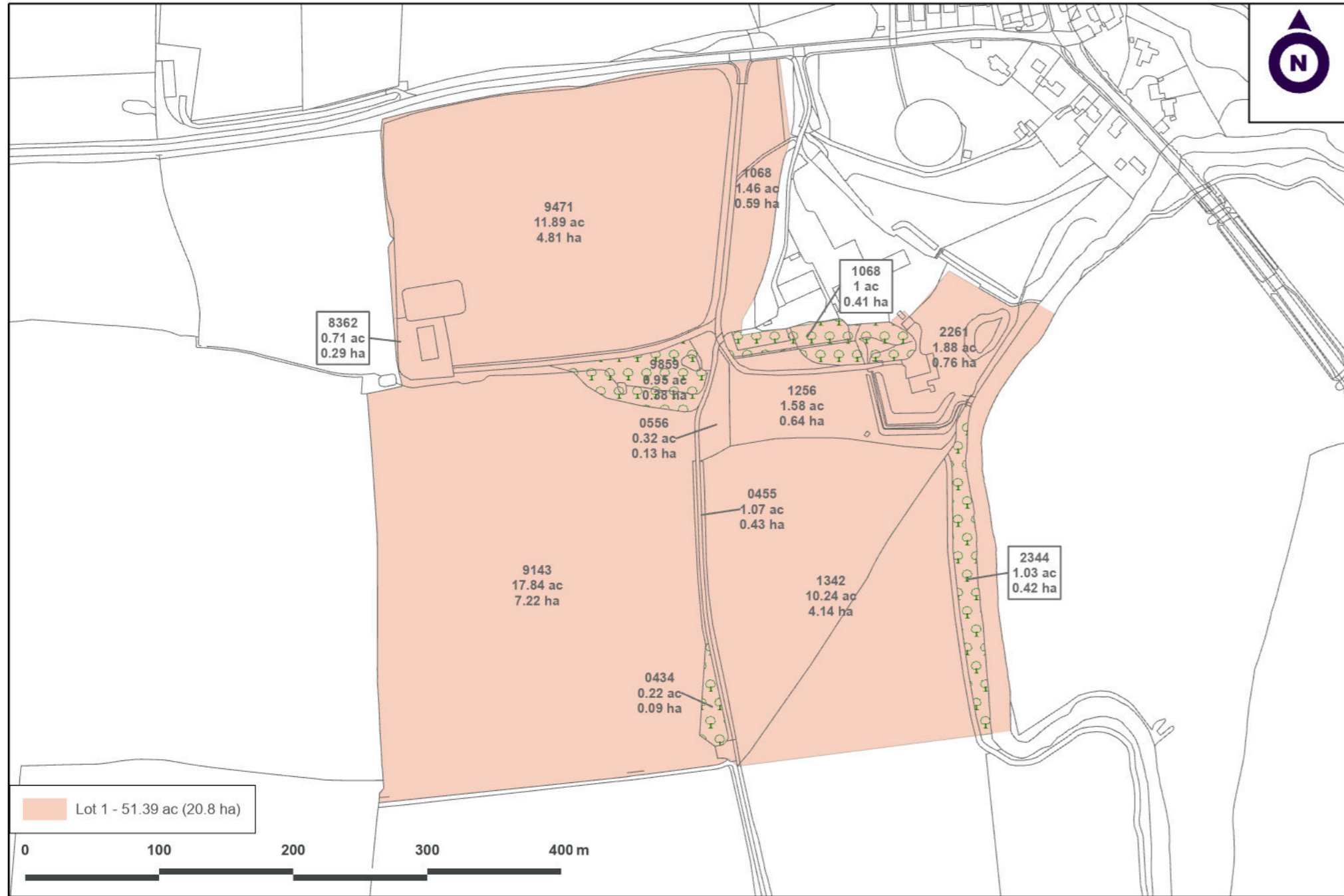
The house sits centrally within its land, offering a high degree of privacy and attractive views across the surrounding countryside.

The grounds extend to approximately 51.24 acres (20.74 ha) and comprise:

- Established gardens and lawns
- Grazing paddocks
- Areas of arable land in grass leys
- River frontage to the River Thames
- Fishing rights

A modern stable block provides excellent equestrian facilities alongside an outdoor sand manege. The land offers flexibility for a variety of uses.





Method of Sale

The property is offered for sale by private treaty as a whole.

Tenure & Possession

The property is offered freehold with vacant possession on completion.

Listing Status

Camoy's Court is Grade II* Listed.

Services

Mains water and electricity, private drainage.

Wayleaves, Easements & Rights of Way

The property is sold subject to the benefit of all rights including rights of way, whether public or private, light, support, drainage, water and electricity supplies and other rights and obligations, easements and proposed wayleaves from masts, pylons, stays, cables, drains, water, gas and other pipes whether specifically referred to or not. NB: A restricted byway and footpath cross the property.

EPC Ratings

EPC E

Local Authorities

South Oxfordshire District Council
www.southoxon.gov.uk

Viewings

Viewings are strictly by appointment only.



/// selling.greyhound.perfectly

Carter Jonas

07880 084 633 | andrew.chandler@carterjonas.co.uk

07557 285 510 | simon.mcconnell@carterjonas.co.uk

07890 662 098 | richard.fairey@carterjonas.co.uk

Mayfield House 256 Banbury Road, Summertown OX2 7DE

[carterjonas.co.uk](https://www.carterjonas.co.uk)

Offices throughout the UK

Important Information

These particulars are for general information purposes only and do not represent an offer or contract or part of one. Carter Jonas, Ceres Property or anyone in their employment has made every attempt to ensure that the particulars and other information provided are as accurate as possible and they are not intended to amount to advice on which you should rely as being factually accurate. Full information which may be relevant to your decision regarding the property can be found on the property listing on [carterjonas.co.uk](https://www.carterjonas.co.uk) or, (including off market properties) on the brochure or a separately available material information sheet. We would advise you to confirm the details of any material information prior to any offer being submitted. You should not assume that the property has all necessary planning, building regulations or other consents and Carter Jonas has not tested any services, facilities or equipment. Any measurements and distances given are approximate only. Where Carter Jonas has been provided with a floorplan by a third party, we cannot guarantee that the floorplan has been measured in accordance with IPMS. Purchasers must satisfy themselves of all of the aforementioned by independent inspection or otherwise. Our images only represent part of the property as it appeared at the time they were taken and do not represent the furnishings included; these are confirmed in a separate inventory. If you require further information, please contact us.

Carter Jonas