



**PORTLAND PLACE, MARYLEBONE, W1B**  
£1,476.92 per week\*

**Carter Jonas**



## FLAT 6 WINSLEY COURT, PORTLAND PLACE, MARYLEBONE, LONDON, W1B 1QG

- Two bedrooms
- Two-bathroom suites (1 en-suite)
- One spacious reception room
- Fitted Kitchen
- First floor
- Porter
- Furnished
- Heating included in the rent

### THE PROPERTY

This stunning apartment was newly refurbished in 2024 and is located on the raised ground floor of a portered building.

Comprising of an extremely spacious reception room with hardwood floors, a fully fitted separate kitchen, two bedrooms and two shower rooms.

The building benefits from a porter and also offers access to a communal garden.

Heating included within the rent.

Residents of Portland Place enjoy unrivalled access to the capital's finest amenities, including the boutiques and restaurants of Marylebone High Street, the cultural institutions of Regent Street and the West End, and the open green spaces of nearby Regent's Park.

Holding deposit is 1 weeks rent = £1,476.92 (at asking price).

Security deposit is 6 weeks rent = £8,861.52 (at asking price of £1,476.92pw).

Minimum term 12 months

Council Tax Band G

For the latest information on broadband and mobile coverage, please visit [checker.ofcom](https://checker.ofcom.gov.uk/) for the most up-to-date details.

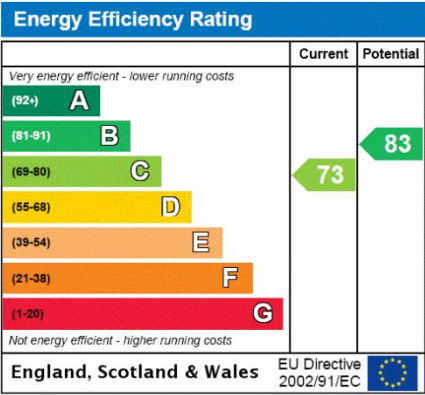
Finished to a high standard, this furnished apartment is located within a sought-after portered building on the prestigious Portland Place in Marylebone.





ADDITIONAL INFORMATION

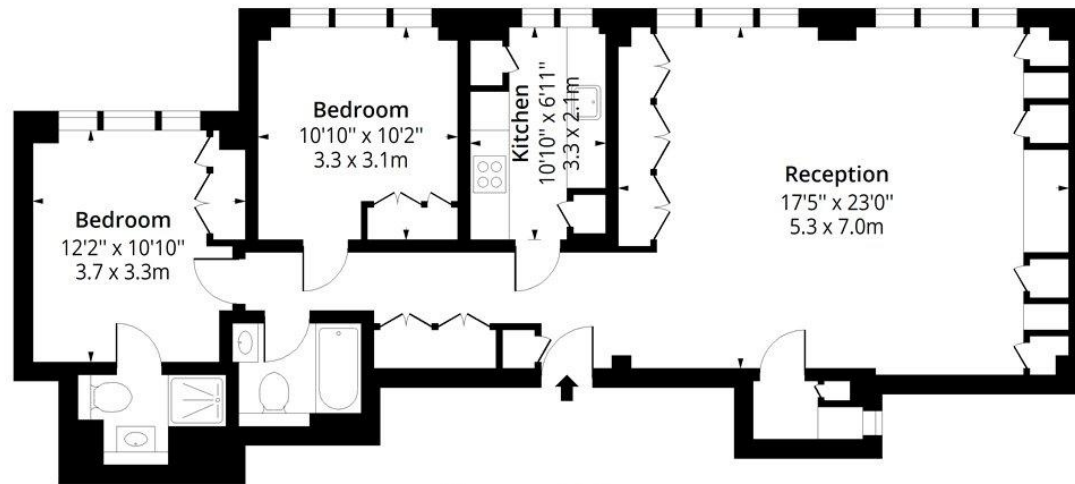
Offers	Available for a minimum term of 12 months longer terms will be considered
Viewing	Strictly by appointment
Local Authority	City of Westminster - Selective Licences - Council Tax Band G





# Portland Place, W1B

Approx. Gross Internal Area 932 Sq Ft - 86.58 Sq M



**Ground Floor**  
Floor Area 932 Sq Ft - 86.58 Sq M



Measured according to RICS IPMS2. Floor plan is for illustrative purposes only and is not to scale. Every attempt has been made to ensure the accuracy of the floor plan shown, however all measurements, fixtures, fittings and data shown are an approximate interpretation for illustrative purposes only. 1 sq m = 10.76 sq feet.

lpaplus.com

Date:11/10/2025



**T: 020 7486 8866**

37 New Cavendish Street, London, W1G 9TL

E: marylebone.lettings@carterjonas.co.uk

A member of



*Exclusive UK affiliate of*

**CHRISTIE'S**  
INTERNATIONAL REAL ESTATE

Classification L2 - Business Data

## IMPORTANT INFORMATION

These particulars are for general information purposes only and do not represent an offer or contract or part of one. Carter Jonas or anyone in their employment has made every attempt to ensure that the particulars and other information provided are as accurate as possible and they are not intended to amount to advice on which you should rely as being factually accurate. Full information which may be relevant to your decision regarding the property can be found on the property listing on [carterjonas.co.uk](http://carterjonas.co.uk) or a separately available material information sheet, and we would advise you to confirm the details of any material information prior to any offer being submitted. You should not assume that the property has all necessary planning, building regulations or other consents and Carter Jonas has not tested any services, facilities, or equipment. Any measurements and distances given are approximate only. Where Carter Jonas has been provided with a floorplan by a third party, we cannot guarantee that the floorplan has been measured in accordance with IPMS. Purchasers or prospective tenants must satisfy themselves of all of the aforementioned by independent inspection or otherwise. Our images only represent part of the property as it appeared at the time they were taken and do not represent the furnishings included; these are confirmed in a separate inventory. If you require further information, please contact us. \*Administration fees may apply depending on tenancy type. Please contact your local branch for this information.