



5 ST GERMAINS LANE, MARSKE-BY-THE-SEA, YORK, NORTH YORKSHIRE, TS11 7LF
£895 per month

Carter Jonas

5 ST GERMAINS LANE, MARSKE-BY-THE-SEA, REDCAR, NORTH YORKSHIRE, TS11 7LF

- Available Now
- Gas Central Heating
- EPC Rating D
- Council Tax Band C
- Pets Considered
- Off Street Parking

THE PROPERTY

Available now, we offer to you a delightful three bedroomed, stone built semi-detached property located in the popular town of Marske and situated within walking distance of the town centre.

In brief, 5 St Germain's Lane offers a welcoming entrance hall, sitting room, dining room, kitchen with fitted units and a downstairs WC. Please note no white goods will be provided with this property.

To the ground floor, this property offers two well-proportioned reception rooms, a modern kitchen with space for a free-standing electric hob, fridge-freezer and plumbing in situ for a washing machine as required.

On the first floor there are two double bedrooms, one single bedroom with a family bathroom and shower room suite nearby.

Externally, there is off road parking suitable for one car with lawned gardens to the front and a substantial fully enclosed garden to the rear with a patio area.

Available unfurnished, this property offers mains gas-fired central heating with double glazing throughout.

Water, sewerage, gas and electricity are all on a mains supply.

Pets considered.

Internet and Mobile: Further information on availability and speeds can be found at checker.ofcom.org.uk.

A delightful three bedroomed, stone built semi-detached property located in the popular town of Marske and within walking distance of the town centre. Large garden and off-street parking.



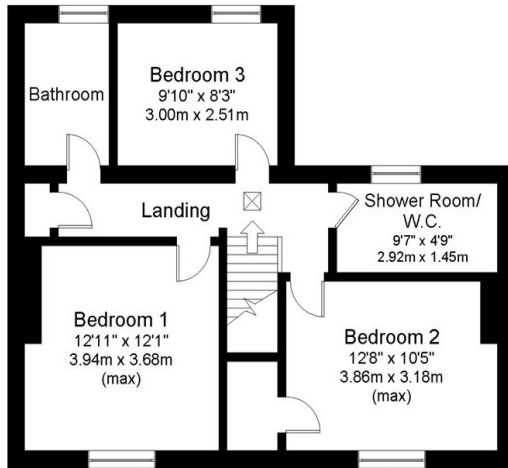
The deposit will be £1,032 (5 week's rent) at a rental value of £895 per calendar month.

The holding deposit will be £206 (1 week's rent) at a rental value of £895 per calendar month.

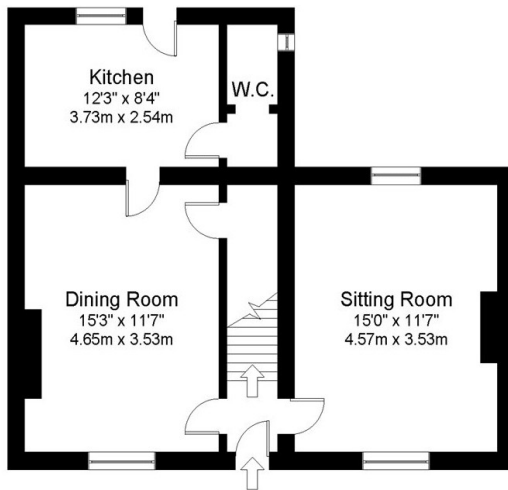
ADDITIONAL INFORMATION

Offers	Available for a minimum term of 12 months, longer terms will be considered
Viewing	Strictly by appointment only
Local Authority	Council Tax Band C



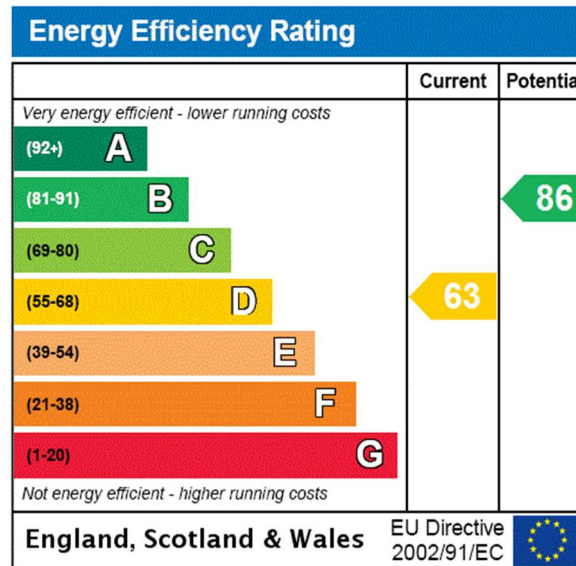


First Floor



Ground Floor

Gross internal floor area (approx.): 103.1sq m (1,110 sq ft)
Not to Scale. Copyright © Apex Plans.



T: 01423 523423

Regent House, 13-15 Albert Street, Harrogate, HG1 1JX
E: harrogate.rural@carterjonas.co.uk



Exclusive UK affiliate of

CHRISTIE'S
INTERNATIONAL REAL ESTATE

Classification L2 - Business Data

IMPORTANT INFORMATION

These particulars are for general information purposes only and do not represent an offer or contract or part of one. Carter Jonas or anyone in their employment has made every attempt to ensure that the particulars and other information provided are as accurate as possible and they are not intended to amount to advice on which you should rely as being factually accurate. Full information which may be relevant to your decision regarding the property can be found on the property listing on carterjonas.co.uk or a separately available material information sheet, and we would advise you to confirm the details of any material information prior to any offer being submitted. You should not assume that the property has all necessary planning, building regulations or other consents and Carter Jonas has not tested any services, facilities, or equipment. Any measurements and distances given are approximate only. Where Carter Jonas has been provided with a floorplan by a third party, we cannot guarantee that the floorplan has been measured in accordance with IPMS. Purchasers or prospective tenants must satisfy themselves of all of the aforementioned by independent inspection or otherwise. Our images only represent part of the property as it appeared at the time they were taken and do not represent the furnishings included; these are confirmed in a separate inventory. If you require further information, please contact us. *Administration fees may apply depending on tenancy type. Please contact your local branch for this information.