



**5 AMBASSADOR COURT, THE MOUNT, YORK**  
£290,000

**Carter Jonas**



## 5 AMBASSADOR COURT THE MOUNT, YO24 1DU

Ambassador Court is a landmark building and stands at the head of The Mount, York's royal entrance to the City. This Grade II Listed property was converted into stylish and individual apartments in 2004. This ground floor apartment has recently been part refurbished and features a striking bay window and benefits from patio doors leading onto its own generous private terrace.

The apartment is largely free flowing and spacious at almost 1000 square feet, the living room with its large bay window leading from the open-plan kitchen and dining room. This room could also serve as an occasional 2nd bedroom. The bedroom features an en suite bathroom and a walk-in wardrobe, with patio doors opening onto the terrace, and there is an additional shower room.

In addition to the private terrace, the property also benefits from beautifully maintained communal lawned gardens. There is an allocated parking space to the rear of the property.

The Mount is ideally located just a short distance from the green open spaces of the racecourse and Knavesmire; with the immediate area also providing useful shops, several restaurants and good schools. The city centre is a short stroll away with its perfect blend of history, culture and shopping/leisure facilities. The railway station is equally close by offering regular services to London's King's Cross in just 1 hr 50 mins.

**TENURE** Leasehold

**LOCAL AUTHORITY** YCC

**EPC BAND** C

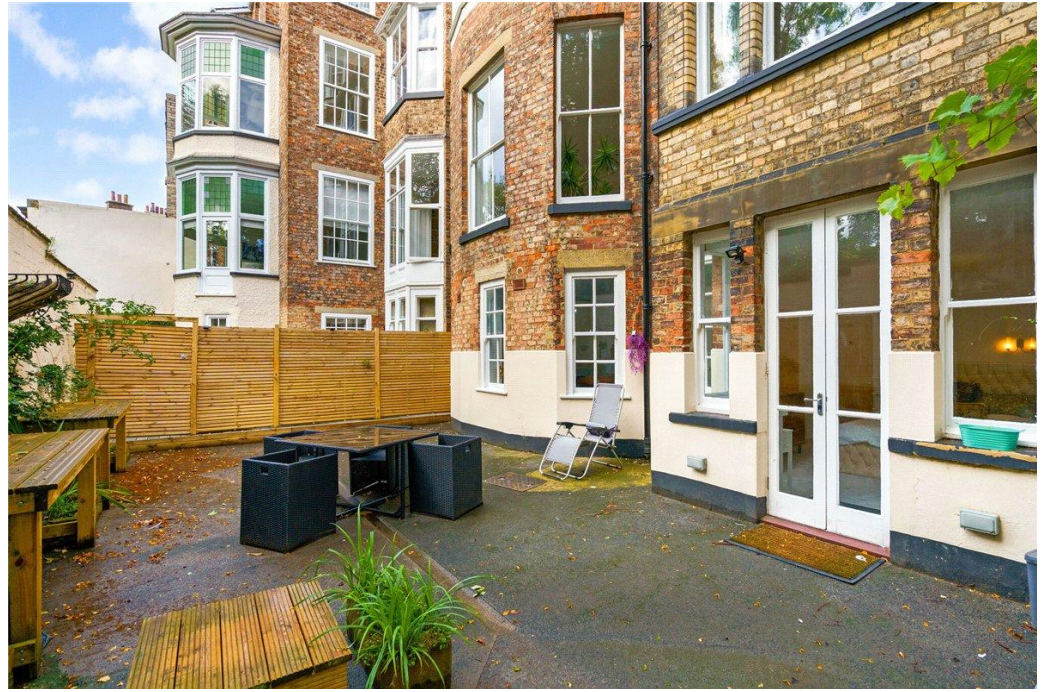
**A SUPERB GROUND FLOOR APARTMENT WITH PRIVATE PARKING, A PRIVATE TERRACE AND BEAUTIFUL SHARED GARDENS SITUATED ON THE MOUNT, ONE OF YORK'S BEST ADDRESSES, CLOSE TO THE CITY CENTRE AND RAILWAY STATION.**





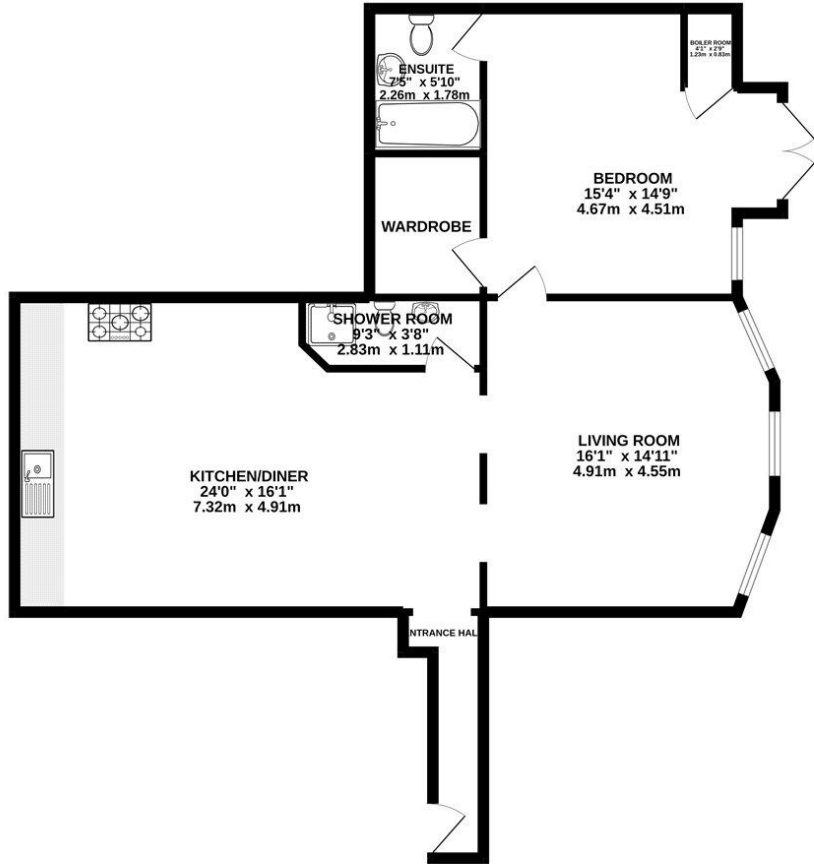






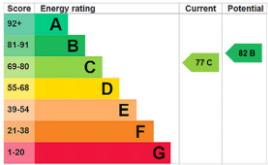


GROUND FLOOR  
947 sq.ft. (88.0 sq.m.) approx.



TOTAL FLOOR AREA: 947 sq.ft. (88.0 sq.m.) approx.

Whilst every attempt has been made to ensure the accuracy of the floorplan contained here, measurements of doors, windows, rooms and any other items are approximate and no responsibility is taken for any error, omission or mis-statement. This plan is for illustrative purposes only and should be used as such by any prospective purchaser. The services, systems and appliances shown have not been tested and no guarantee as to their operability or efficiency can be given.  
Made with Metropix ©2022



York 01904 558200

york@carterjonas.co.uk  
82 Micklegate, York, YO1 6LF

**carterjonas.co.uk**  
Offices throughout the UK

### IMPORTANT INFORMATION

These particulars are for general information purposes only and do not represent an offer of contract or part of one. Carter Jonas has made every attempt to ensure that the particulars and other information provided are as accurate as possible and are not intended to amount to advice on which you should rely as being factually accurate. You should not assume that the property has all necessary planning, building regulations or other consents and Carter Jonas have not tested any services, facilities or equipment. Any measurements and distances given are approximate only. Purchasers must satisfy themselves of all of the aforementioned by independent inspection or otherwise. Although we make reasonable efforts to update our information, neither Carter Jonas LLP nor anyone in its employment or acting on its behalf makes any representations warranties or guarantees, whether express or implied, in relation to the property, or that the content in these particulars is accurate, complete or up to date. Our images only represent part of the property as it appeared at the time they were taken. If you require further information please contact us.