

2022

EQ Flex at Willis Tower

Move-in ready workspaces
that evolve with your needs.

Suite 3520

Willis Tower



EQ Flex Highlights 35th Floor



Suite Offerings

- Dedicated, private entrance with Open Path Mobile App
- Custom branding opportunities
- Fully equipped kitchens with seating
- Conference room equipped with display monitor and video conferencing capabilities; seats up to 8 people
- Huddle Rooms for groups of 2-4 people
- Professionally cleaned Monday-Friday
- Dedicated IT Room for each Suite

Technology

- High speed, secure internet
- Super-fast internet with dedicated bandwidth offered at a premium
- Guest WiFi network available
- Xerox multifunction printer in each suite, includes toner and maintenance

Furniture

- 48" x 30" height adjustable, powered desks designed by Vari
- High-quality, modern and comfortable seating areas

Floor Amenities

- Wellness room, for taking down time
- Private phone room, ADA accessible
- Mail services with pick-up
- Community room with gaming, snacks and refreshments

Art Collection

- Works by Chicago-based artists
- Curated to tell compelling stories of life in our city to create an inspiring workplace

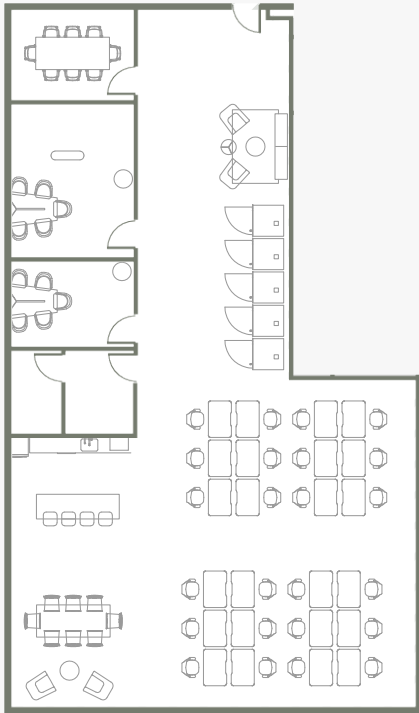
EQ Flex Floorplan 35th Floor

Monthly Rates are ranging from
\$675-\$825 per seat

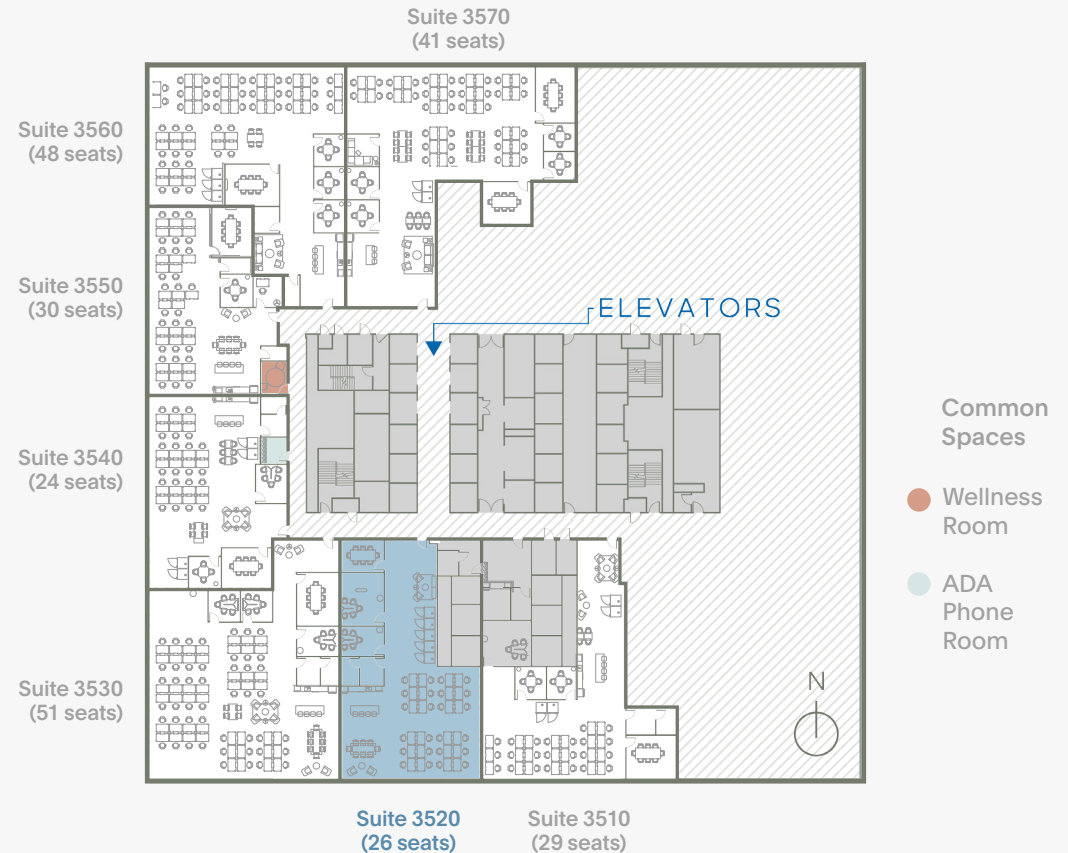
6, 12, 24, 36 month terms available



Suite 3520 | Seats up to 26



Willis Tower



Full Access to Chicago's Best Amenities



Catalog

An open and airy experience seamlessly integrating dining, entertainment, retail, and conferencing with Willis Tower's standard-setting evolution of the workplace.



Tenant Cafés

Tower House: Gourmet coffee, grab-and-go food, and a fully stocked bar set in an open, casual space to work & connect throughout the day.

Altitude: Delicious coffee and snacks with breathtaking high-rise views.



Conferencing

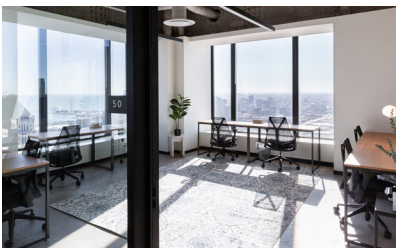
Tower House Conference Center: Tenant-exclusive transformational meeting space for up to 400 guests.

Convene: 75,000 SF event space in Catalog that can accommodate up to 1,000 guests.



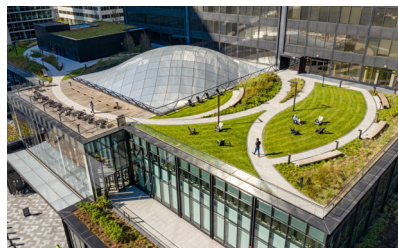
The Metropolitan

Chicago's preeminent destination for business and community leaders. Enjoy handcrafted cuisine and the finest libations with magnificent views from the 66th and 67th floors. The Club includes a banquet hall, conference rooms, concierge services and so much more.



Coworking

Industrious: Everything from single desks to full suites with a variety of flexible membership options.



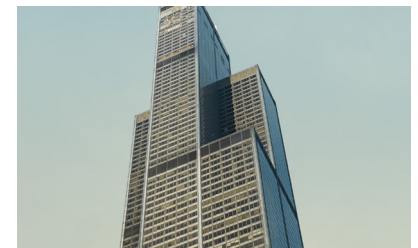
Outdoor Terrace

Greenspace with lush lawns, walking paths, ample seating, WiFi, and outdoor music. A respite to work, eat, or unwind, located above Catalog.



Tone

Full-service 30,000 SF tenant-exclusive fitness center with locker rooms and showers. Offers members a selection of training classes and services.



Tenant Communication

Willis Tower's app features tenant-exclusive events, mobile ordering, and special deals and promotions. 'The 110' weekly e-newsletter covers the latest building news and other important updates.

Introducing EQ Flex. Flexibility to Adapt to Wherever You're Headed.

willistower.com/eq-flex

NIKKI KERN

nkern@telosgroupllc.com

312.477.2945

CAROLINE COLNON

ccolnon@telosgroupllc.com

312.477.2948



telos

