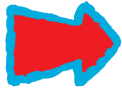




That's Groovy!



There are four kinds of sentences. Each one does something different.

A **declarative sentence** tells something.

It is a **statement** and ends with a period.

My grandparents grew up during the 1960s.

An **interrogative sentence** asks something.

It is a **question** and ends with a question mark.

Do you know who the hippies were?

An **imperative sentence** tells someone to do something.

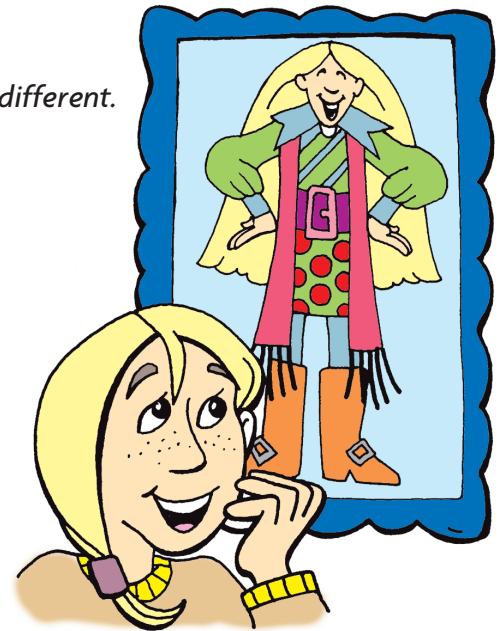
It is a **command** and ends with a period.

Check out this photo of my grandmother.

An **exclamatory sentence** shows strong feeling.

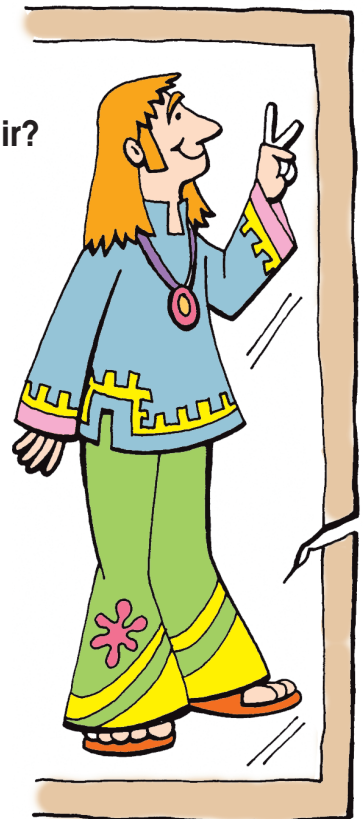
It is an **exclamation** and ends with an exclamation mark.

Now that's one strange-looking outfit she has on!



Read the following sentences. Identify what kind of sentence each one is. Write S for statement, Q for question, C for command, and E for exclamation.

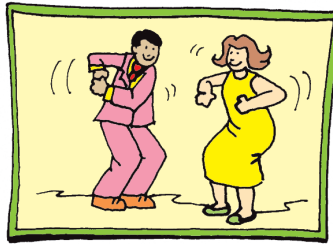
- _____ 1. Grandma says there was a fashion revolution in the 1960s.
- _____ 2. What an amazing time it must have been!
- _____ 3. Here's a photo of my grandfather in his teens.
- _____ 4. How do you like those sideburns and the long hair?
- _____ 5. Take a look at what he's wearing.
- _____ 6. I don't believe those bellbottoms and sandals!
- _____ 7. Please tell me he's not wearing beads.
- _____ 8. I'm glad these fashions are no longer in style!
- _____ 9. Have you ever seen anything so funny?
- _____ 10. Try not to laugh too hard.
- _____ 11. One day our grandchildren may laugh at us.
- _____ 12. What's so funny about what we're wearing?



Name _____

 **Identifying and writing four kinds of sentences**

Now, look at other "photos" from the sixties and write a statement (S), a question (Q), a command (C), and an exclamation (E) about each one. Make sure to begin and end your sentences correctly.

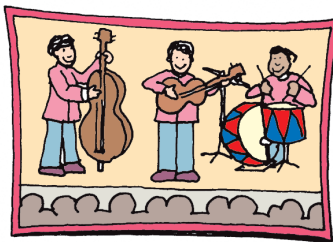


S

Q

C

E

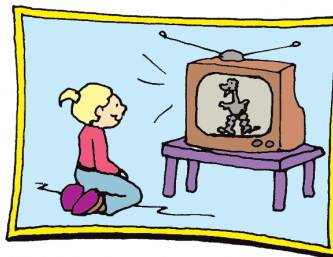


S

Q

C

E



S

Q

C

E



Invite someone to listen as you expressively read aloud the sentences that you wrote, showing what kind of sentences they are by the way that you read them.