



THE WEST ASHEVILLE SERIES

1696

BEDS	BATHS	SQFT	LEVELS	WIDTH (FT)	DEPTH (FT)
3	2.5	1,696	2	24	44

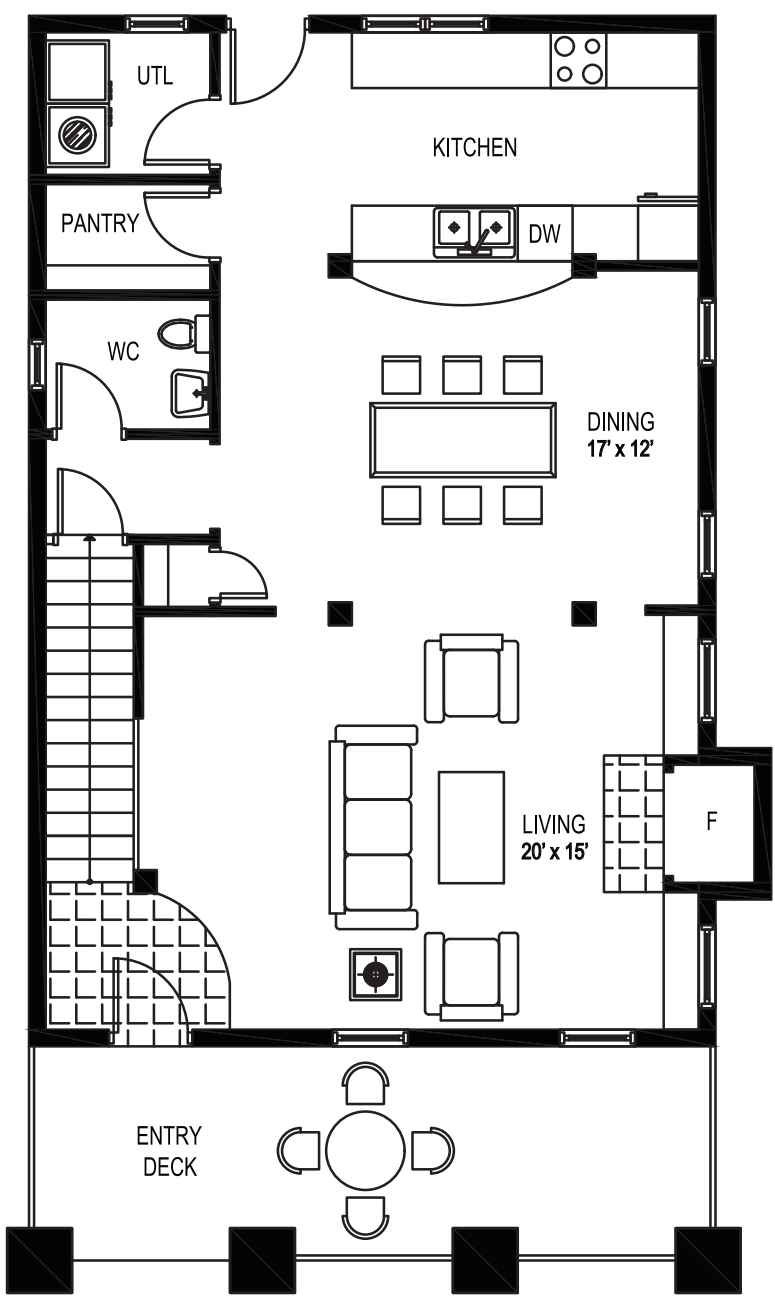
The 1696 plan is a Craftsman-style home for slim urban lots. The home offers traditional Craftsman details like shaker siding, tapered columns, and gabled roofs with knee braces, tailored to fit the needs of the city-dwelling family. Expansive porches on the front and back of the house offer opportunities for enjoying the outdoors from the comfort of home.





1696: Main Level

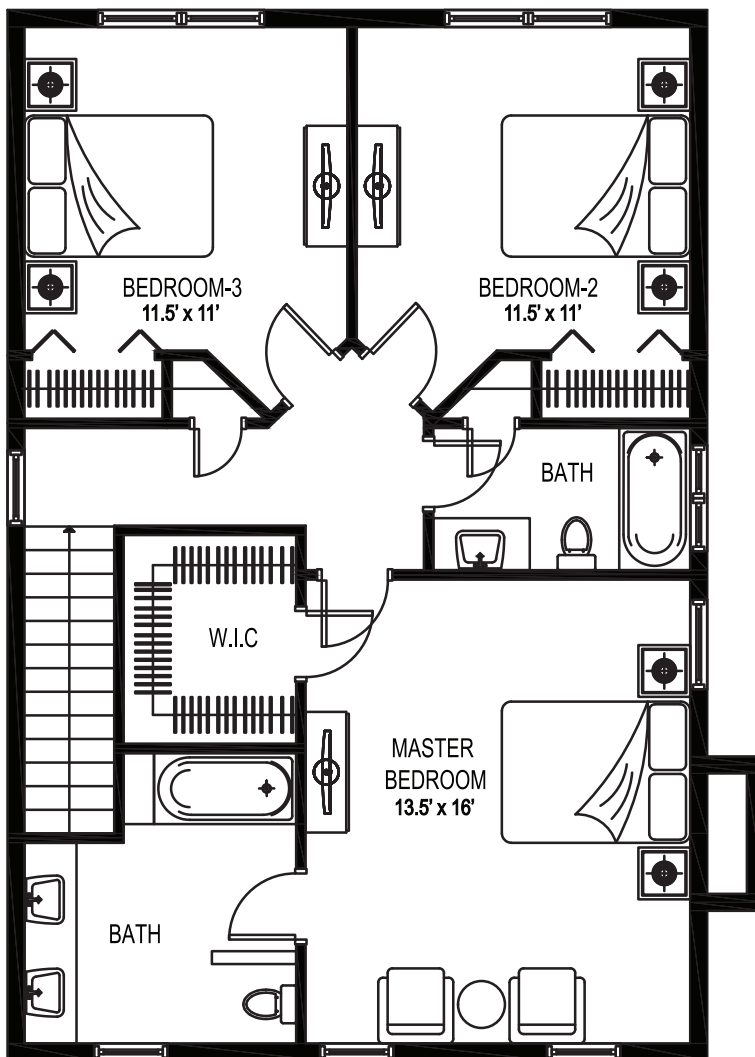
864 ft²





1696: Upper Level

832 ft²



Design exclusively offered by Sundog Development Company, LLC a residential development and home building company. Renderings are artist's conception and are not intended to show specific detailing. Due to normal construction tolerances, square footage and room sizes may vary. Model representations, options, and pricing subject to change without notice.