



Down Dog

BEDS	BATHS	SQFT	LEVELS	WIDTH (FT)	DEPTH (FT)
3	3.5	2,941	2	50	49

The perfect plan for a hillside home, the Down Dog features a walk-out basement with plenty of living room for the entire family. It features 2 bedrooms and 2 full baths on the lower level, as well as a family room and theater. The main level features the master suite with entry to an open deck, as well as an open plan with living and dining room off the kitchen. Both levels of the home offer decks for outdoor entertaining and relaxing.

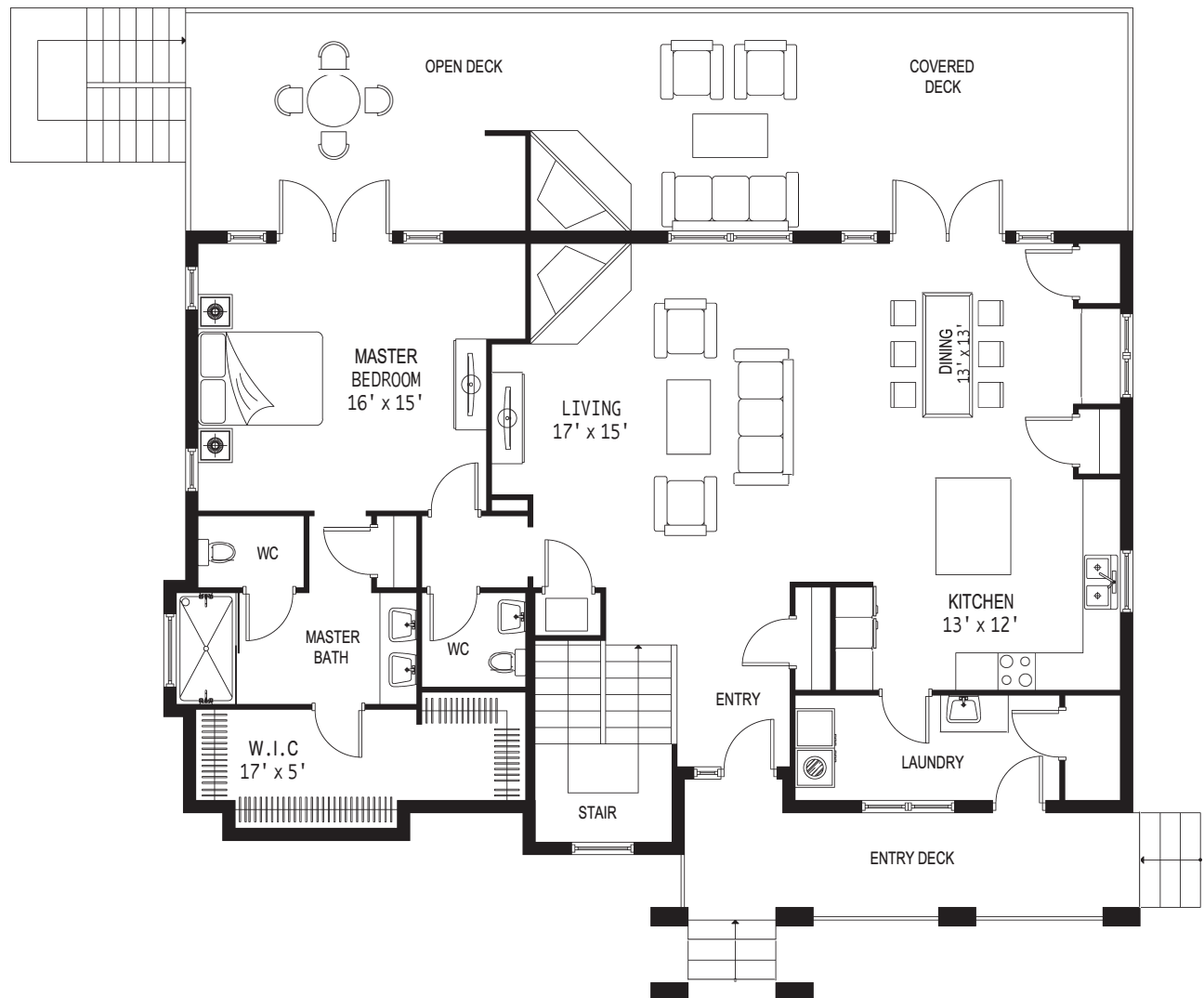


(828) 774-5720 | info@sundoghomes.com | www.SundogHomes.com



Down Dog: Main Level

1,455 ft²





Down Dog: Lower Level

1,486 ft²

