



# River Dog

BEDS	BATHS	SQFT	LEVELS	WIDTH (FT)	DEPTH (FT)
4	3.5	2,422	2	54	52

The 4-bedroom River Dog plan is a 2-story Craftsman-inspired home that features an open layout with a master suite on the main floor. The second level offers three bedrooms and 2 full baths, as well as a flex room that can serve as a home office or a fifth bedroom. A[n optional?] bonus room above the detached 2-car garage offers even more space, as it can easily convert to a one-bedroom apartment with a kitchen and full bath.

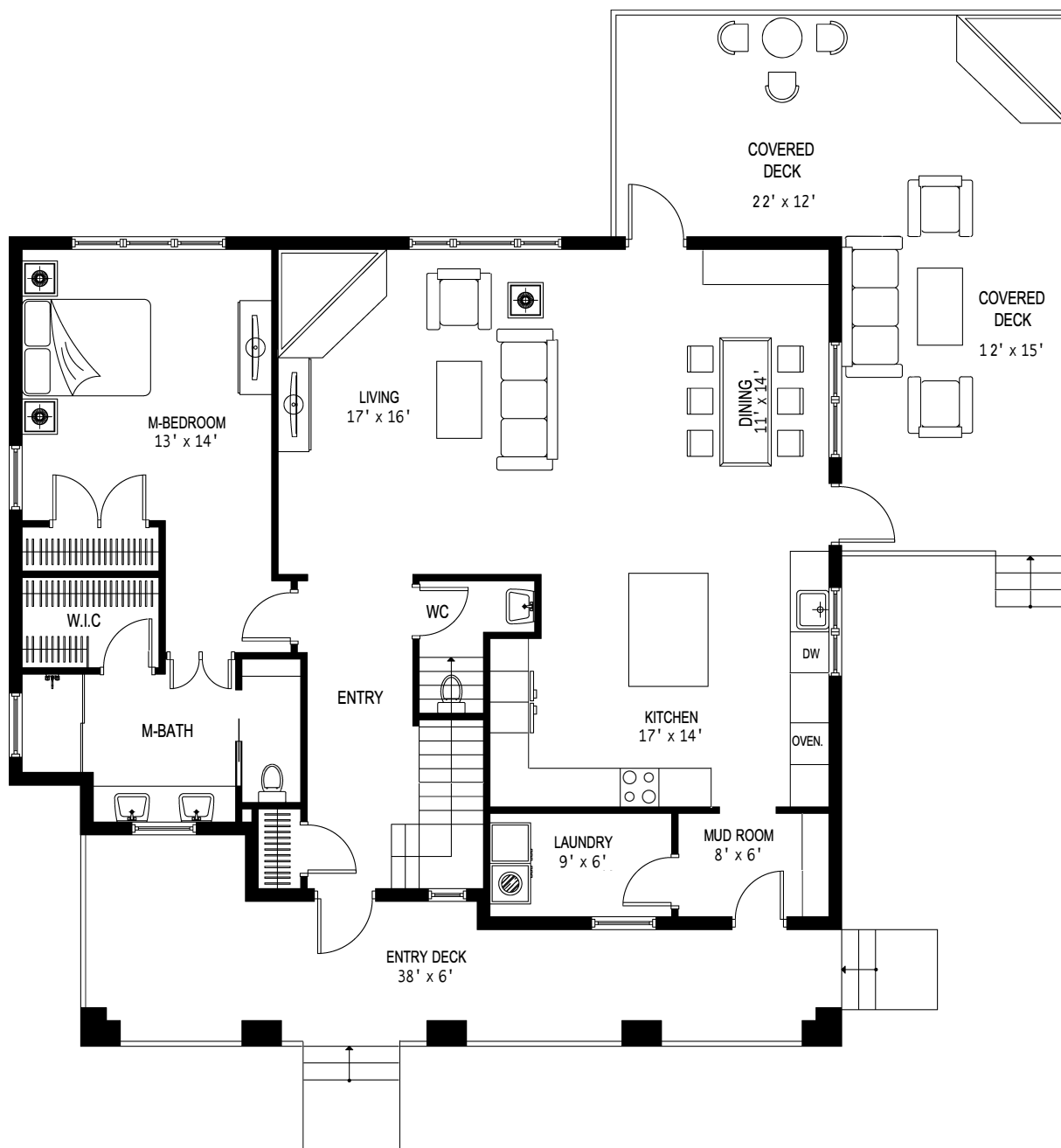


(828) 774-5720 | [info@sundoghomes.com](mailto:info@sundoghomes.com) | [www.SundogHomes.com](http://www.SundogHomes.com)



# River Dog: Main Level

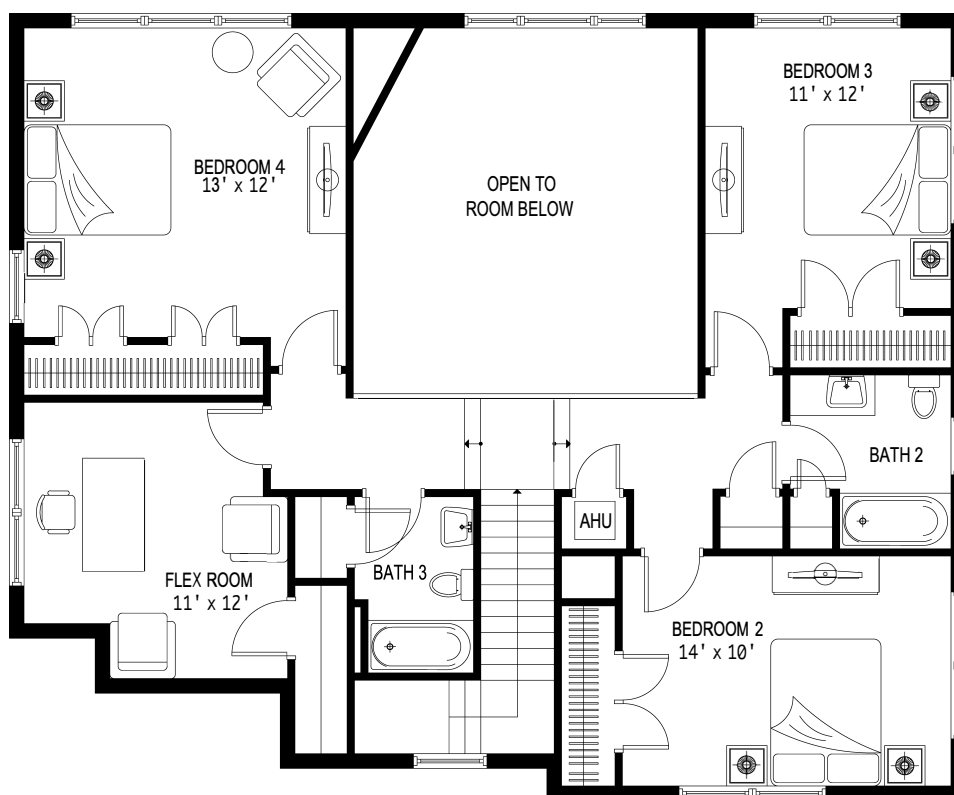
1,371 ft<sup>2</sup>





# River Dog: Upper Level

1,051 ft<sup>2</sup>



Design exclusively offered by Sundog Development Company, LLC a residential development and home building company. Renderings are artist's conception and are not intended to show specific detailing. Due to normal construction tolerances, square footage and room sizes may vary. Model representations, options, and pricing subject to change without notice.