

# Aircraft Noise Report

2022 Annual Summary

Cincinnati/Northern  
Kentucky International  
Airport



# AIRCRAFT NOISE REPORT 2022 ANNUAL SUMMARY

## Table of Contents and Summary of Reports

<u>Aircraft Noise Report</u>	Page 2
This report details the locations of all complaints for the reporting period. Comparisons include state, county and areas within each county.	
<u>Total Complaints &amp; Operations Comparison</u>	Page 3
This report compares the total complaints for the reporting period to the previous years. It also compares the total annual complaints with the total number of annual operations for each year.	
<u>Complaints by Time of Day</u>	Page 4
This report compares the complaint occurrence during daytime operations (7am - 10pm) and nighttime operations (10pm-7am).	
<u>Complaints by Category</u>	Page 5
Complaints received for the reporting period are detailed by descriptors for noise levels, perceived aircraft level, and more.	
<u>Frequent Complainants</u>	Page 6
This report shows the number of complaints made by the most frequent/repeat complainants for the reporting period.	
<u>Sisters of Charity Quarterly Monitoring</u>	Page 7
This report details the noise monitoring location and results for each reporting period.	

## 2022 ANNUAL SUMMARY AIRCRAFT NOISE REPORT

### Kentucky Calls

<b>Boone County</b>	<b>409</b>
Burlington	12
Florence	139
Hebron	141
Petersburg	4
Richwood	1
Union	109
Walton	3
<b>Campbell County</b>	<b>5</b>
Cold Spring	2
Highland Heights	2
Wilder	1
<b>Carroll County</b>	<b>1</b>
Sanders	1

### Kentucky Calls Continued

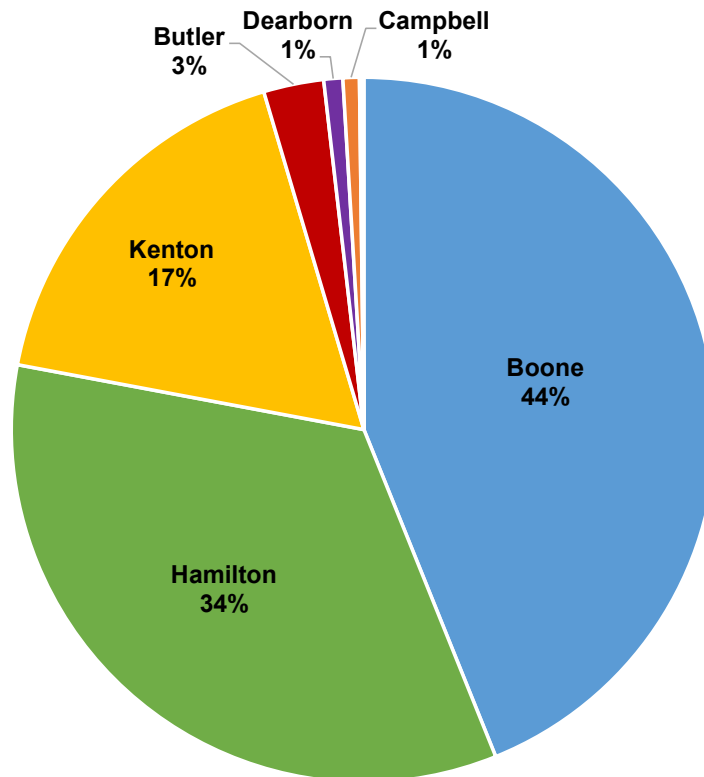
<b>Kenton County</b>	<b>173</b>
Covington	2
Crescent Springs	51
Crittenden	2
Erlanger	5
Fort Mitchell	86
Fort Wright	4
Independence	1
Latonia Lakes	2
Villa Hills	20

### Indiana Calls

<b>Dearborn County</b>	<b>13</b>
Aurora	1
Batesville	2
Lawrenceburg	10

### Ohio Calls

<b>Butler County</b>	<b>2</b>
Okeana	2
<b>Clermont County</b>	<b>4</b>
Amelia	4
<b>Hamilton County</b>	<b>390</b>
Blue Ash	1
Cheviot	5
Cincinnati	232
Cleves	10
Delhi	5
Dent	1
Green Township	4
Harrison	3
North Bend	128
Sayler Park	1
<b>No location provided</b>	<b>13</b>



## 2022 ANNUAL SUMMARY TOTAL COMPLAINTS & OPERATIONS

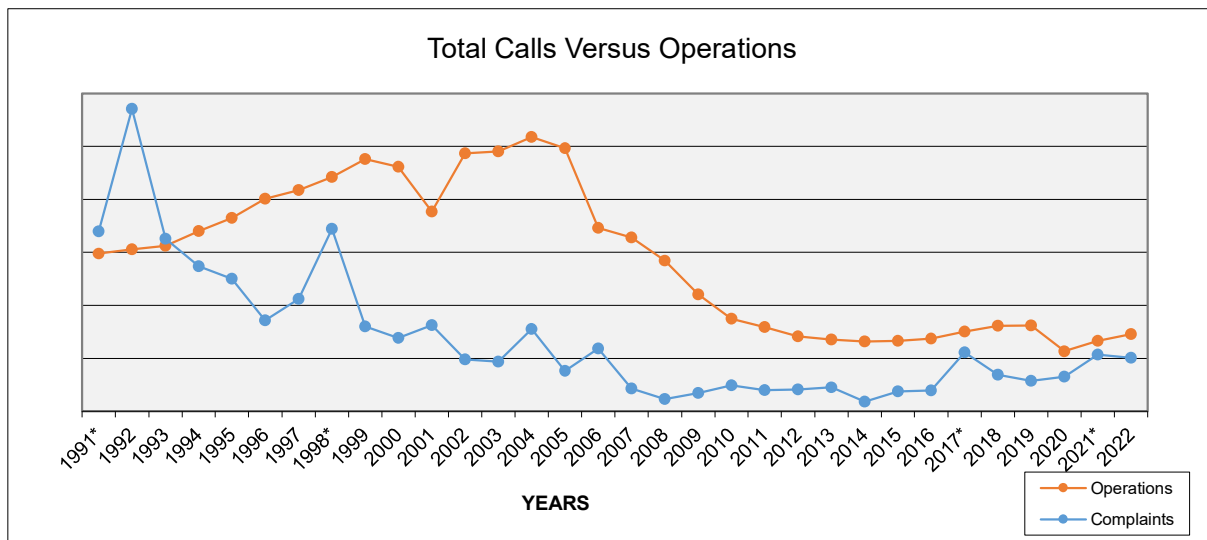
YEAR	COMPLAINTS	OPERATIONS
1991*	3,393	297,425
1992	5,709	305,544
1993	3,256	312,204
1994	546	339,839
1995	464	365,114
1996	1,717	401,367
1997	2,118	417,391
1998*	3,444	442,276
1999	1,601	476,128
2000	1,384	461,454
2001	1,626	376,744
2002	978	486,501
2003	933	490,284
2004	1,550	517,520
2005	767	496,366
2006	1,187	345,754
2007	432	328,069
2008	232	284,487
2009	344	220,323
2010	486	174,982
2011	398	159,060
2012	414	141,372
2013	449	135,492
2014	182	131,695
2015	379	133,068
2016	395	137,225
2017*	1,111	150,463
2018	691	161,672
2019	571	162,106
2020	651	113,377
2021*	1,069	132,867
2022	1,010	145,606
<b>TOTAL</b>	<b>39,487</b>	<b>9,243,775</b>

\* Total complaints included September - December, 1991

\* 1,845 complaints were made by one complainant

\* 546 complaints were made by one complainant

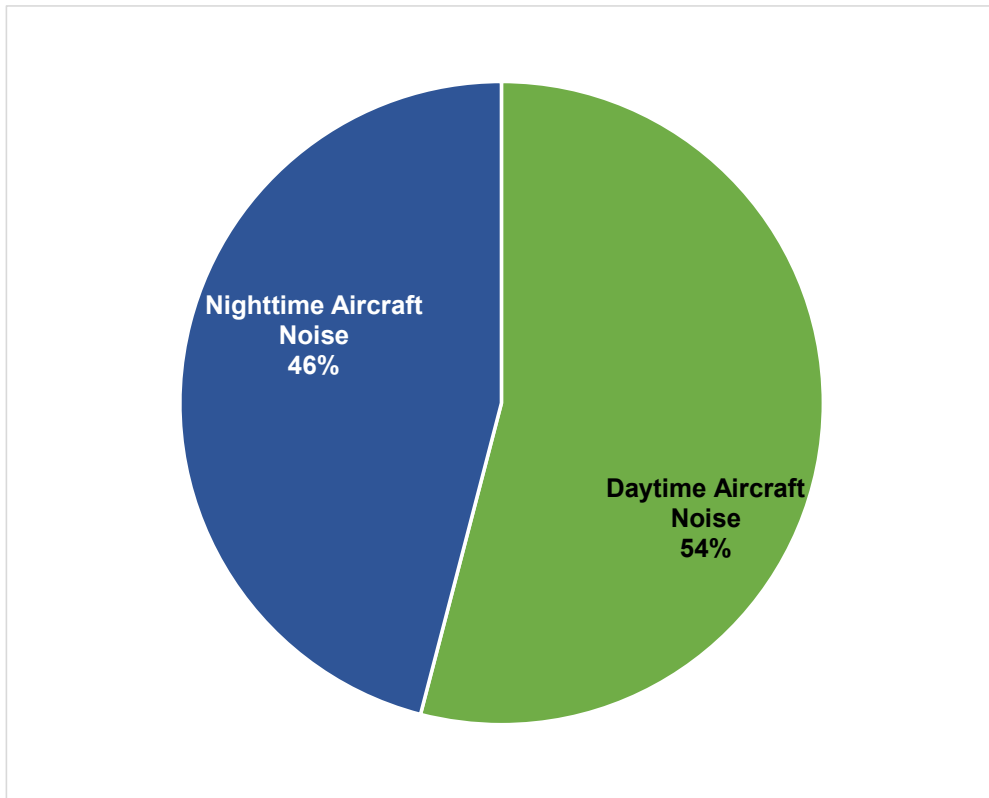
\* Increase related to RWY 9/27 closure



Note: Graph shown is not using the same numeric scale for Total Calls and Total Operations but is designed to show correlation

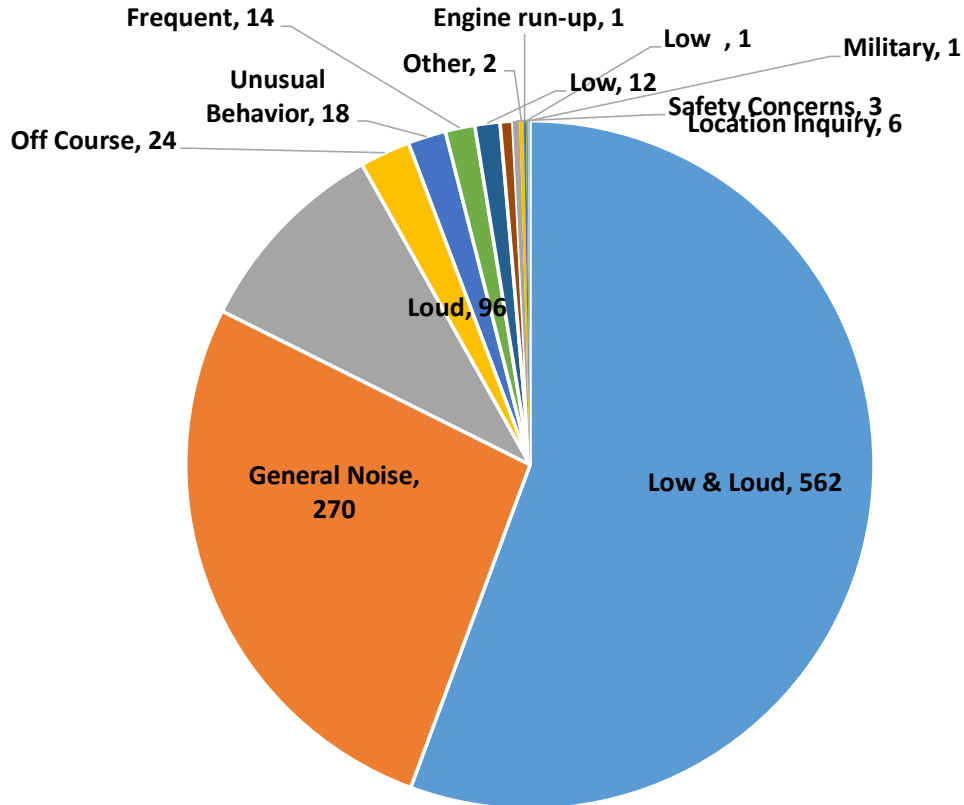
2022 ANNUAL SUMMARY  
COMPLAINTS BY TIME OF DAY

Category Description	Number of Complaints and/or Questions	Percentage Comparison
Daytime Aircraft Noise (7am - 10pm)	546	54.06%
Nighttime Aircraft Noise (10pm - 7am)	464	45.94%
TOTAL	1010	100.00%



## 2022 ANNUAL SUMMARY COMPLAINTS BY CATEGORY

Category Description	Number of Complaints and/or Questions	Percentage Comparison
Low & Loud	562	55.64%
General Noise	270	26.73%
Loud	96	9.50%
Off Course	24	2.38%
Unusual Behavior	18	1.78%
Frequent	14	1.39%
Low	12	1.19%
Location Inquiry	6	0.59%
Safety Concerns	3	0.30%
Other	2	0.20%
Engine run-up	1	0.10%
Low	1	0.10%
Military	1	0.10%
<b>TOTAL</b>	<b>1010</b>	<b>100.00%</b>



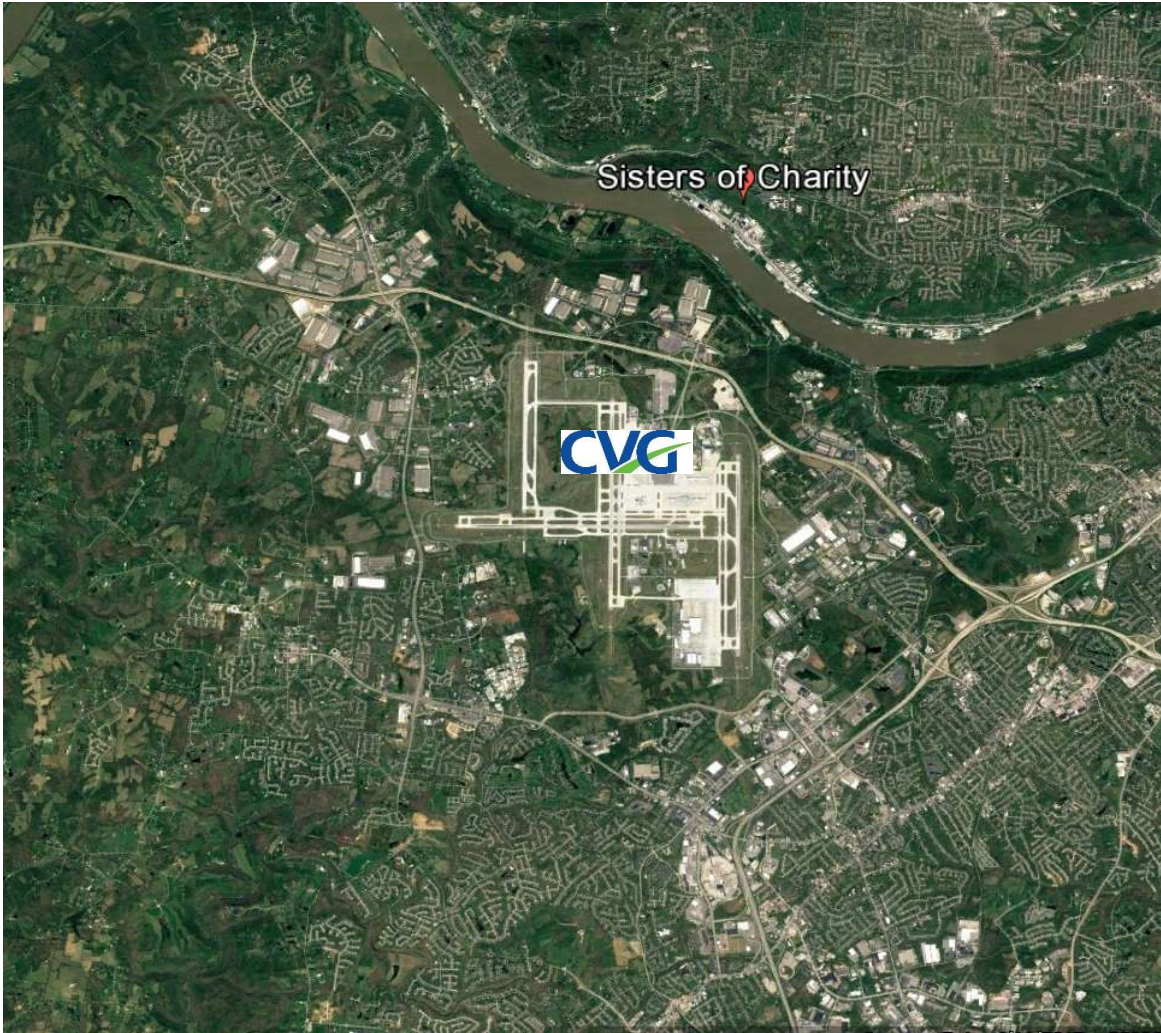
## 2022 ANNUAL SUMMARY FREQUENT COMPLAINANTS

Caller	State	City or Area	Runway	Number of Complaints	Percent of Total Complaints
1	OH	North Bend	36C/18C	104	10%
2	KY	Fort Mitchell	9/27	76	8%
3	OH	Cincinnati	9/27	43	4%
4	KY	Crescent Springs	9/27	39	4%
5	KY	Union	36R/18L	34	3%
6	OH	Cincinnati	36R/18L	26	3%
7	KY	Florence	36C/18C	23	2%
8	KY	Hebron	36C/18C	14	1%
9	KY	Union	36C/18C	14	1%
10	KY	Hebron	36C/18C	13	1%
11	KY	Hebron	36C/18C	13	1%
			<b>TOTALS</b>	<b>399</b>	<b>40%</b>

Totals	
<b>Total 2022 Complaints</b>	<b>1010</b>
<b>Total 2022 Complainants</b>	<b>383</b>

2022 ANNUAL SUMMARY  
SISTERS OF CHARITY QUARTERLY MONITORING

Monitoring Period	DNL
Quarter 1	53.7
Quarter 2	58.0
Quarter 3	59.0
Quarter 4	57.6



Source: Google Maps