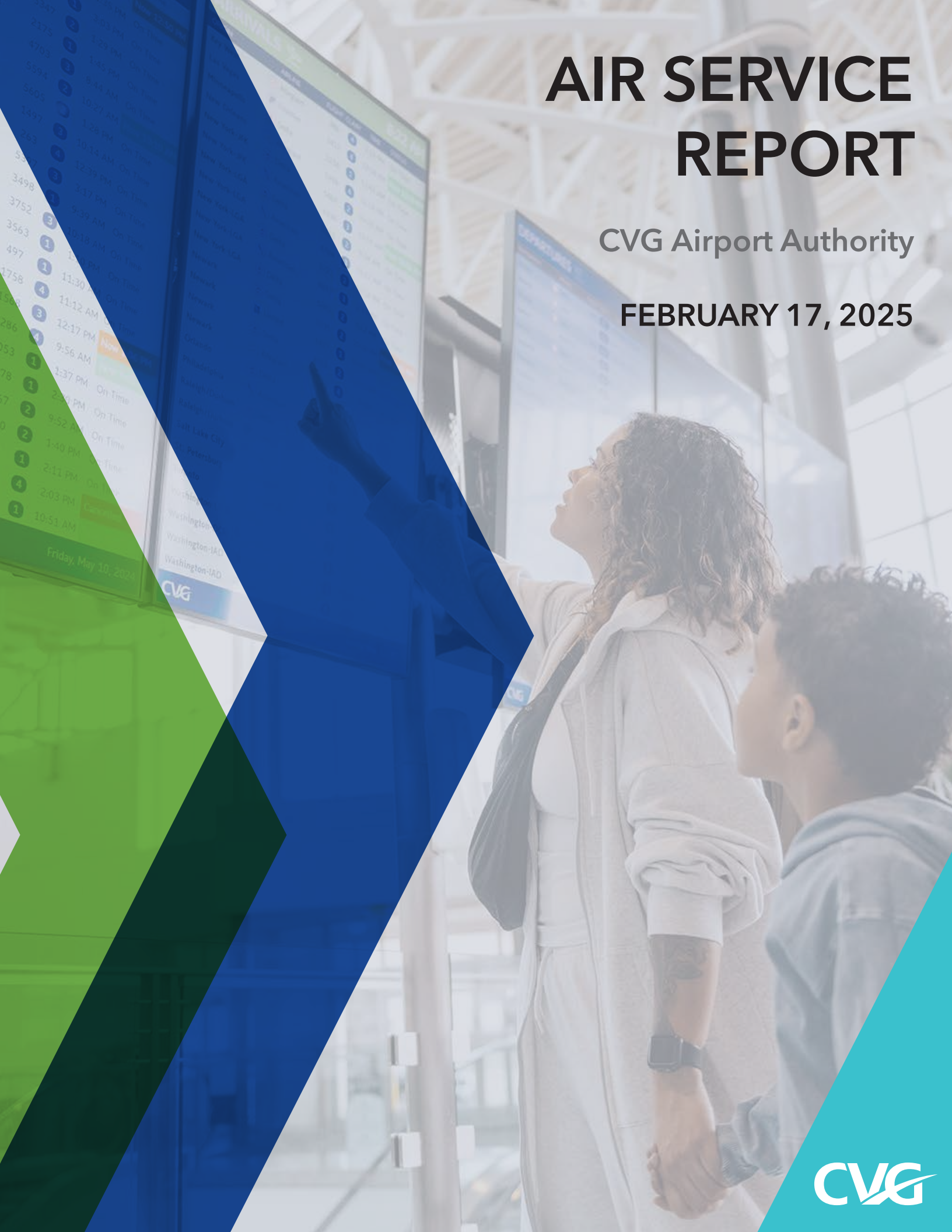


AIR SERVICE REPORT

CVG Airport Authority

FEBRUARY 17, 2025

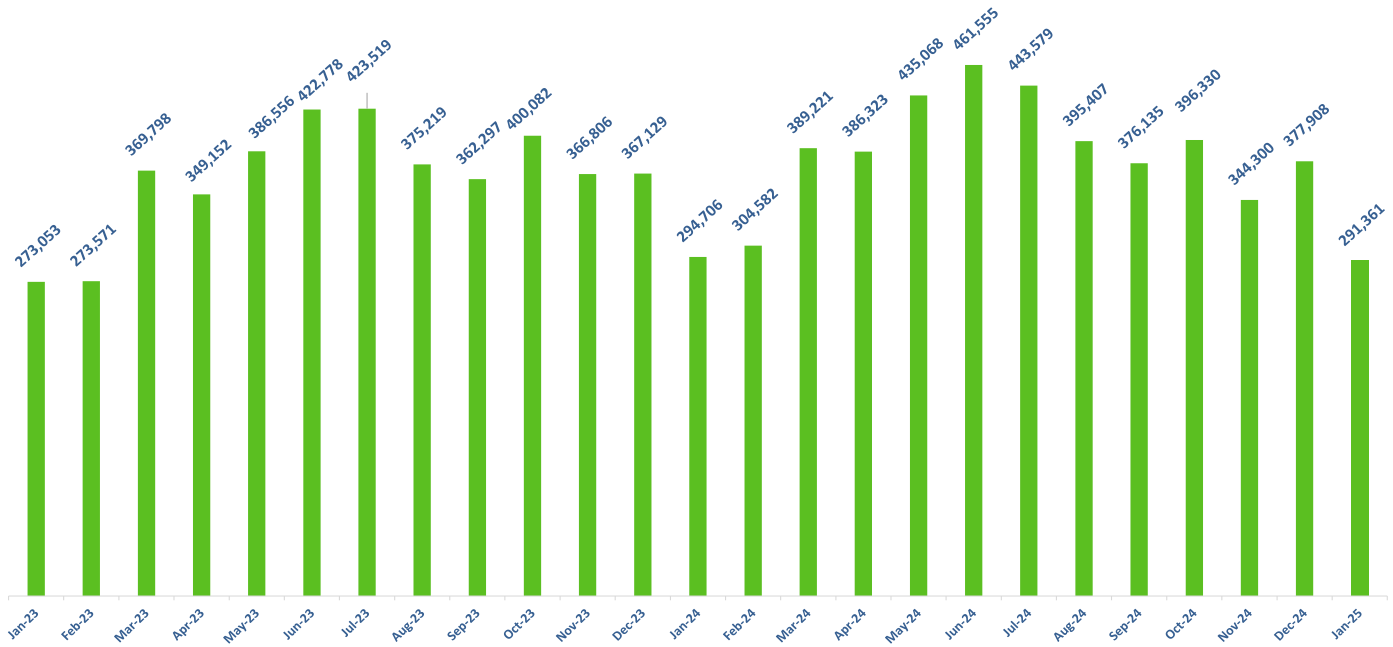


Cincinnati/Northern Kentucky International Airport

Air Service Report

January 2025

Passenger Enplanements



Comments:

- Enplanements in January were 291,361, a decrease of 1.1 percent compared to January 2024.
- Year to date, enplanements are 291,361, a decrease of 1.1 percent compared to 2024.

Passenger Carrier Enplanements

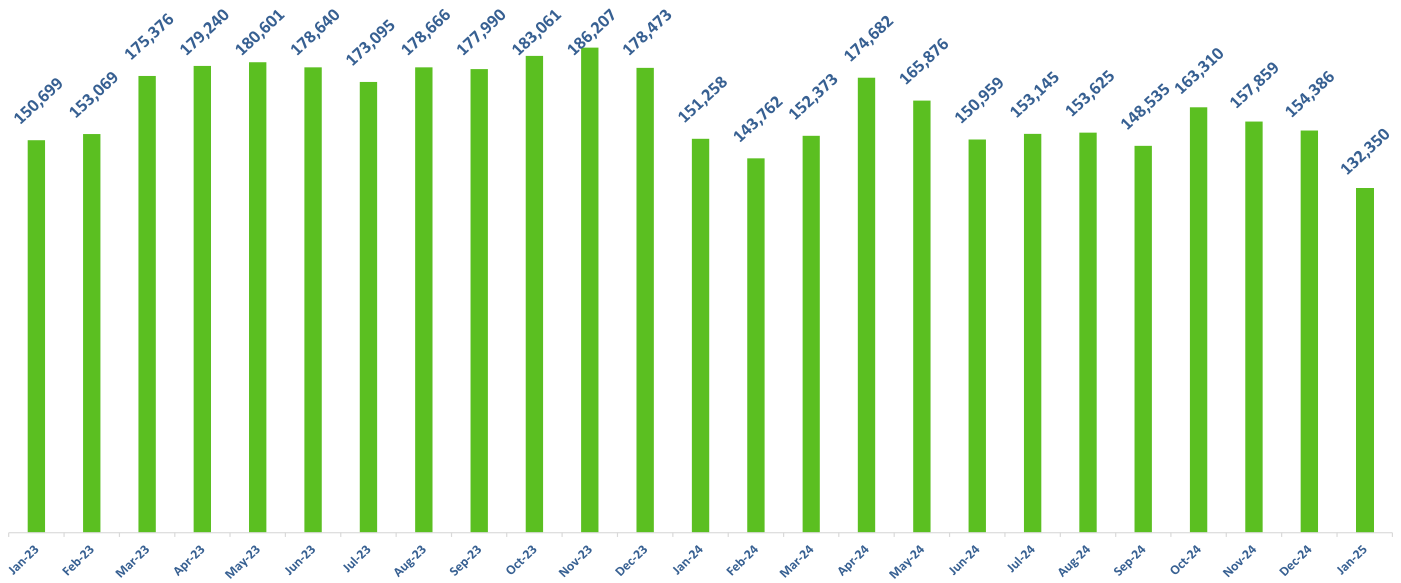
January 2025	Enplaned Passengers			
	Monthly	% '25 vs '24	YTD	% '25 vs '24
Air Canada	1,182	15.0%	1,182	15.0%
American	56,847	1.0%	56,847	1.0%
Delta	106,956	-0.8%	106,956	-0.8%
United	30,920	-2.1%	30,920	-2.1%
Alaska	2,786	43.4%	2,786	43.4%
Allegiant	25,587	-11.1%	25,587	-11.1%
British Airways	2,736	9.6%	2,736	9.6%
Frontier	46,466	1.7%	46,466	1.7%
Southwest	15,816	-2.5%	15,816	-2.5%
Sun Country	60	-74.6%	60	-74.6%
Breeze	1,046	-28.6%	1,046	-28.6%
Other Scheduled Flights	459	39.9%	459	39.9%
Non-Scheduled Flights	500	-36.5%	500	-36.5%
Total	291,361	-1.1%	291,361	-1.1%

Comments :

- Scheduled daily departures ranged in number from a low of 93 on Saturdays to a high of 123 on Thursdays. On average, CVG had 110 scheduled daily departures in January.
- Nonstop Cities – In January, airlines offered nonstop scheduled service to 44 domestic destinations and 4 international destinations.

Cincinnati/Northern Kentucky International Airport Air Service Report January 2025

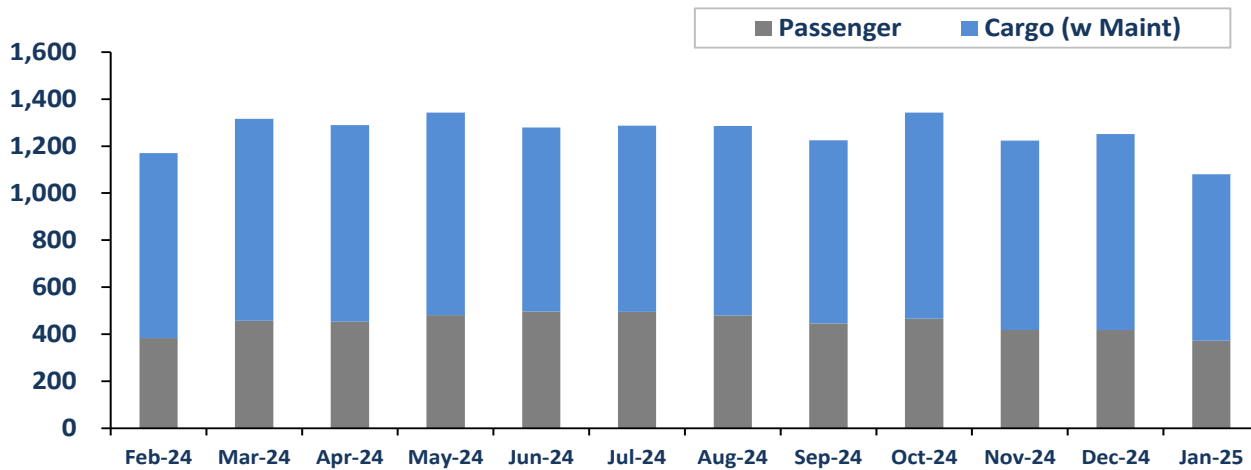
Cargo Volume



Comments:

- Total cargo in the month of January 2025 was 132,350 tons compared to January 2024 tonnage of 151,258, a decrease of 12.5 percent.
- Year to date, cargo tonnage is 132,350, a decrease of 12.5 percent.

Landed Weight



Comments:

- Landed weight from passenger operations in the month of January decreased 7.5 percent to 371.7 million pounds compared to 401.8 million pounds in January 2024.
- Landed weight from cargo operations in the month of January decreased 12.1 percent to 708.4 million pounds compared to 805.5 million pounds in January 2024.
- Total landed weight in January 2025 decreased 10.5 percent compared to January 2024. YTD, total landed weight has decreased 10.5 percent compared to 2024.