

**ELEVATE**

**CVG**

***Elevate CVG  
Industry Event***

**May 30, 2024**



# Cincinnati / Northern Kentucky International Airport (CVG)



8.7 million passengers (2023)



12<sup>th</sup> largest cargo airport in the world



16,000+ badged employees on campus



\$9.3 billion+ economic impact

Latest figure is based on 2022 data in 2023 dollars

**\$6 billion increase over last 10 years!**





# Renovation history

## Ticketing

1993 -  
Constructed

1994 - East

2012 - West  
Refresh

## Checkpoint

2009 - Constructed

2012 - Reconfigured

## Conc. A

1973/1993 -  
Constructed

2012 - Refresh

## Conc. B

1993 -  
Constructed

2012 - Food  
Court

2018 - Hold  
Rooms

## Tunnel

1993 -  
Constructed

2012 - Refresh



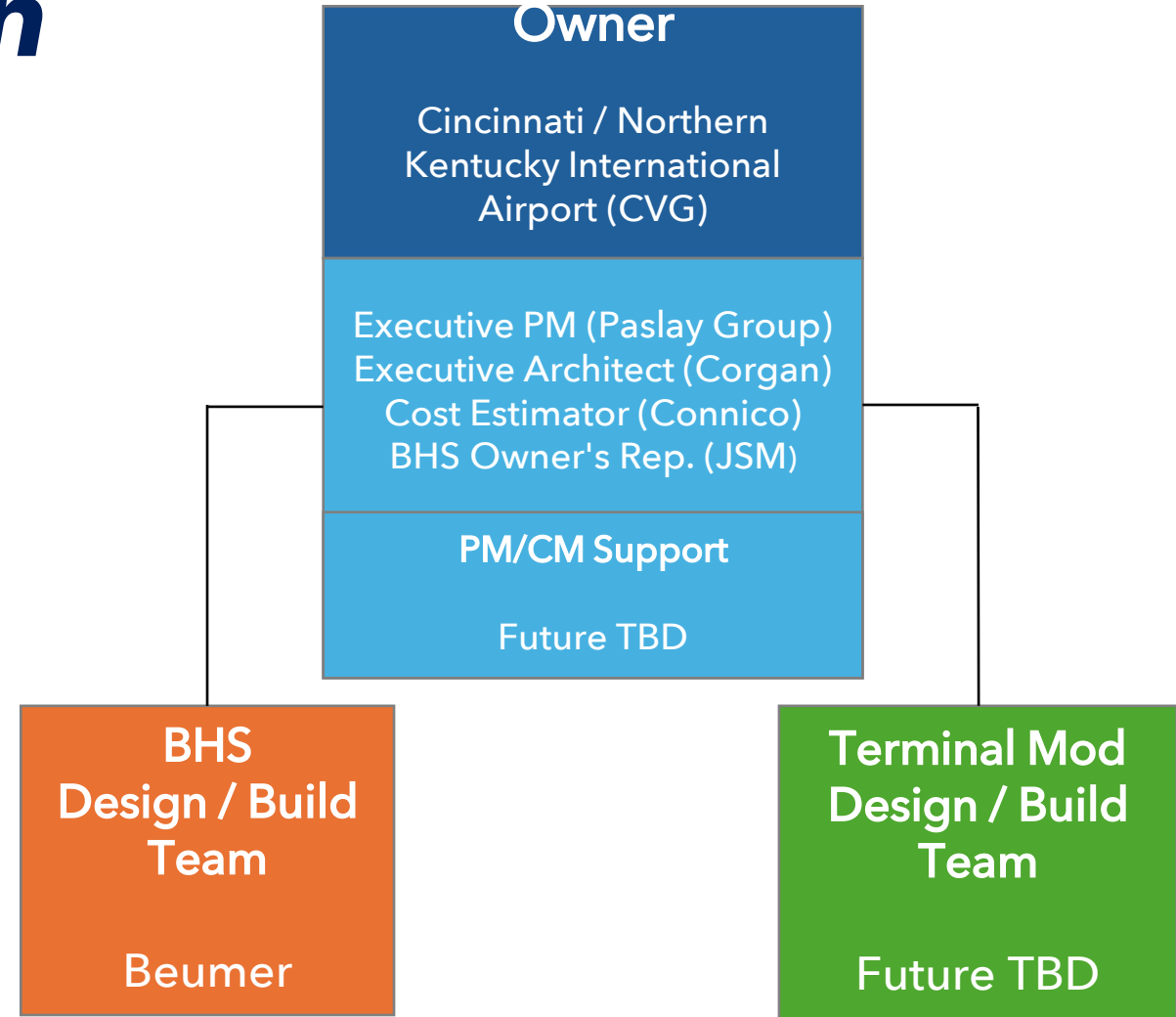
# Program organization

## CVG Airport Authority - Owner

- Chief Operations Officer - Shannon Oldfield
- VP Planning & Development - Bill Siemer
- Senior Program Manager - Corinne Reynolds

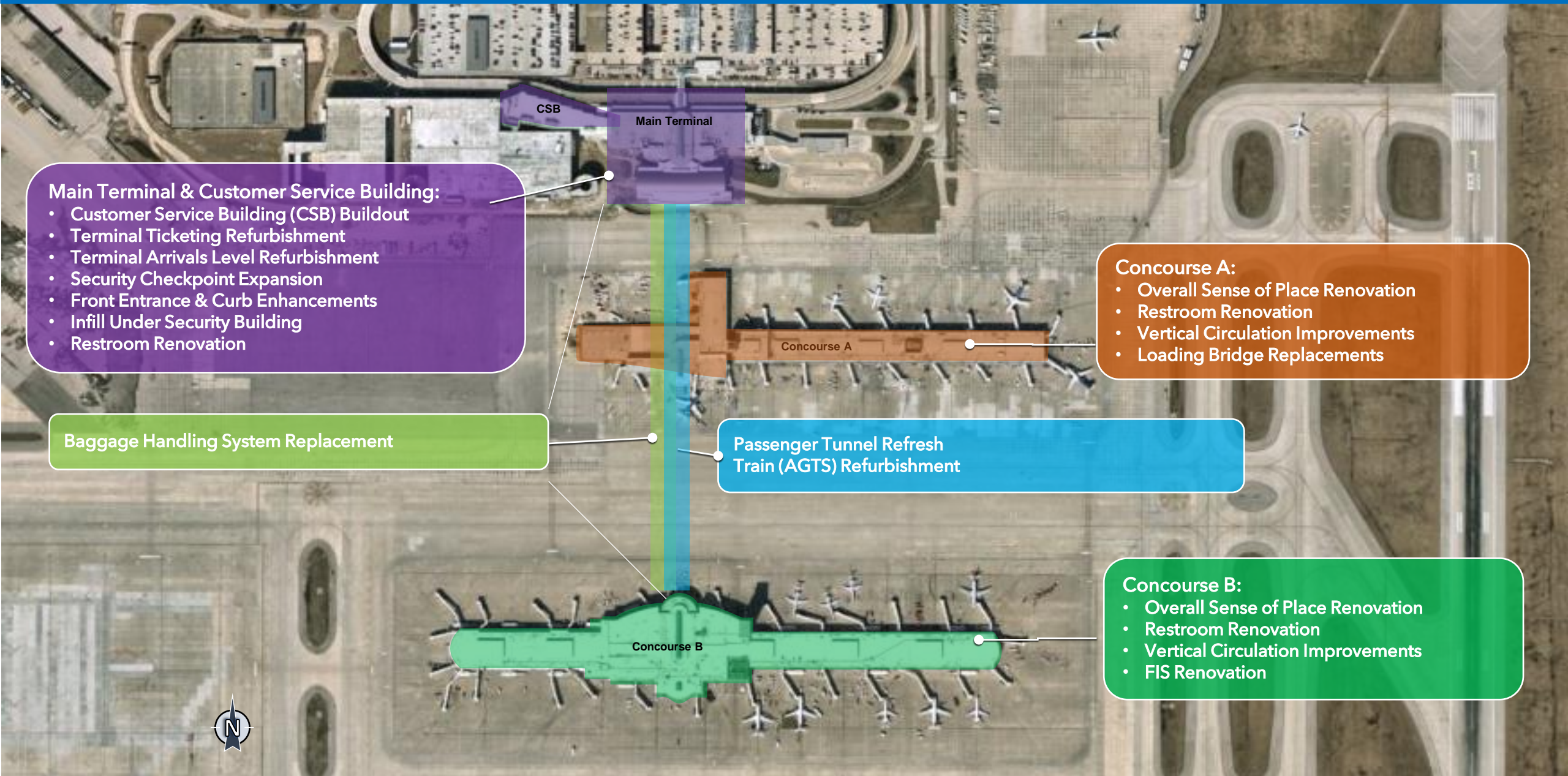
## Terminal Modernization Program (TMP)

- Executive Program Manager (Paslay Group)
- Executive Architect (Corgan)
- Cost Estimator (Connico)
- **PM / CM Support (TBD)**
- **Design / Build Team (TBD)**
- Baggage Handling System (BHS) Owner's Representative (JSM)
- BHS Replacement Design-Build Team (Beumer)





# Overall program improvements



## Main Terminal & Customer Service Building:

- Customer Service Building (CSB) Buildout
- Terminal Ticketing Refurbishment
- Terminal Arrivals Level Refurbishment
- Security Checkpoint Expansion
- Front Entrance & Curb Enhancements
- Infill Under Security Building
- Restroom Renovation

CSB

Main Terminal

Baggage Handling System Replacement

Passenger Tunnel Refresh  
Train (AGTS) Refurbishment

## Concourse A:

- Overall Sense of Place Renovation
- Restroom Renovation
- Vertical Circulation Improvements
- Loading Bridge Replacements

Concourse A

## Concourse B:

- Overall Sense of Place Renovation
- Restroom Renovation
- Vertical Circulation Improvements
- FIS Renovation

Concourse B



# Terminal Modernization Program

The project definition and scope are in development and may include:

- Main Terminal
  - Ticket Lobby Remodel
    - Additional counters constructed in Customer Service Building (CSB)
    - Move backwall to increase queue space at existing ticket counters
    - Move ticket offices to the mezzanine level
  - Ticketing level floor infill to increase security queue space
- Restrooms
  - Replacement of all piping, fixtures, and finishes in Main Terminal, Concourses A and B to enhance accessibility and functionality
- Update to Baggage Claim finishes
- Curb front improvements
- Update to Concourse A and B finishes and furniture
- Additional elevators at Concourses A and B
- Update Passenger Tunnel finishes
- Update finishes in the FIS

# Terminal improvements










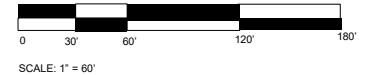
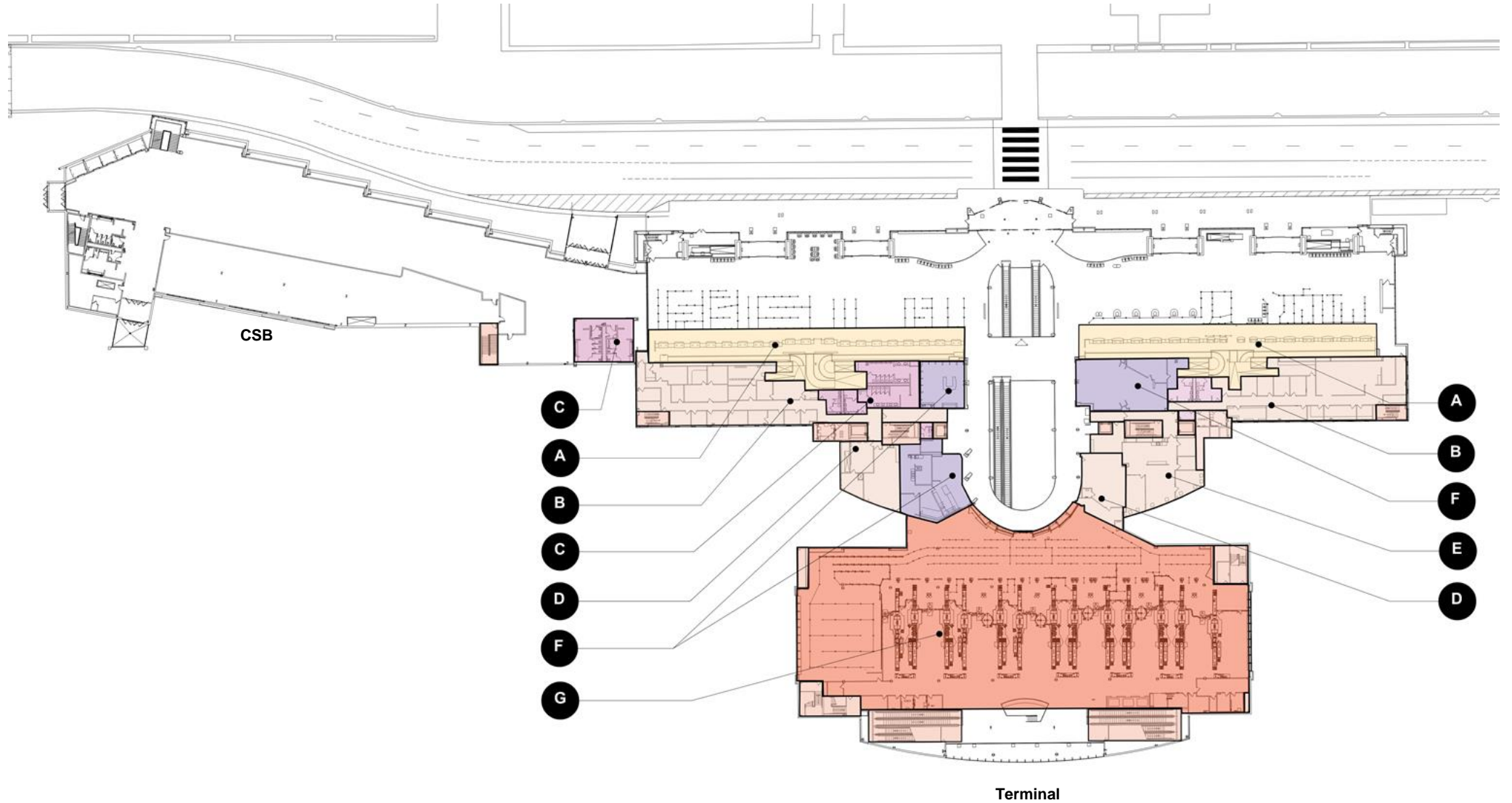
# MAIN TERMINAL - LEVEL 2 | EXISTING

## COMPONENT

- A** Ticket Counters
- B** Airline Ticket Offices
- C** Landside public restrooms
- D** Offices
- E** Offices
- F** Concessions
- G** Security Screening Checkpoint (SSCP)

## LEGEND

-  Ticketing/ Counter
-  Airline Support
-  Airport Support
-  Restroom
-  Concession
-  SSCP/ TSA
-  Curbside





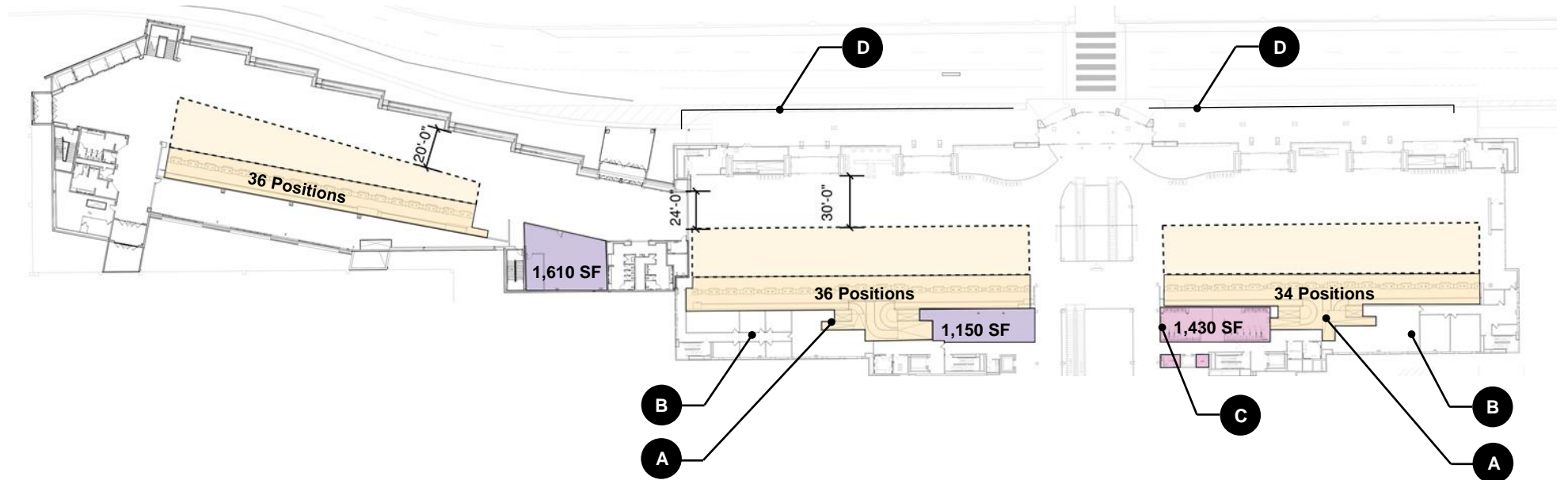
# MAIN TERMINAL - LEVEL 2 | TICKETING CIRCULATION – RELOCATE TICKET COUNTERS

## COMPONENTS

- A** New BHS induction openings in slab
- B** Reduction of ATO space
- C** Full reconfiguration of men's and women's landside restrooms
- D** 5'-0" sidewalk expansion

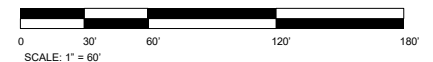
## LEGEND

- Ticketing Counter / Queueing
- ATO or Concessions
- Options Restrooms

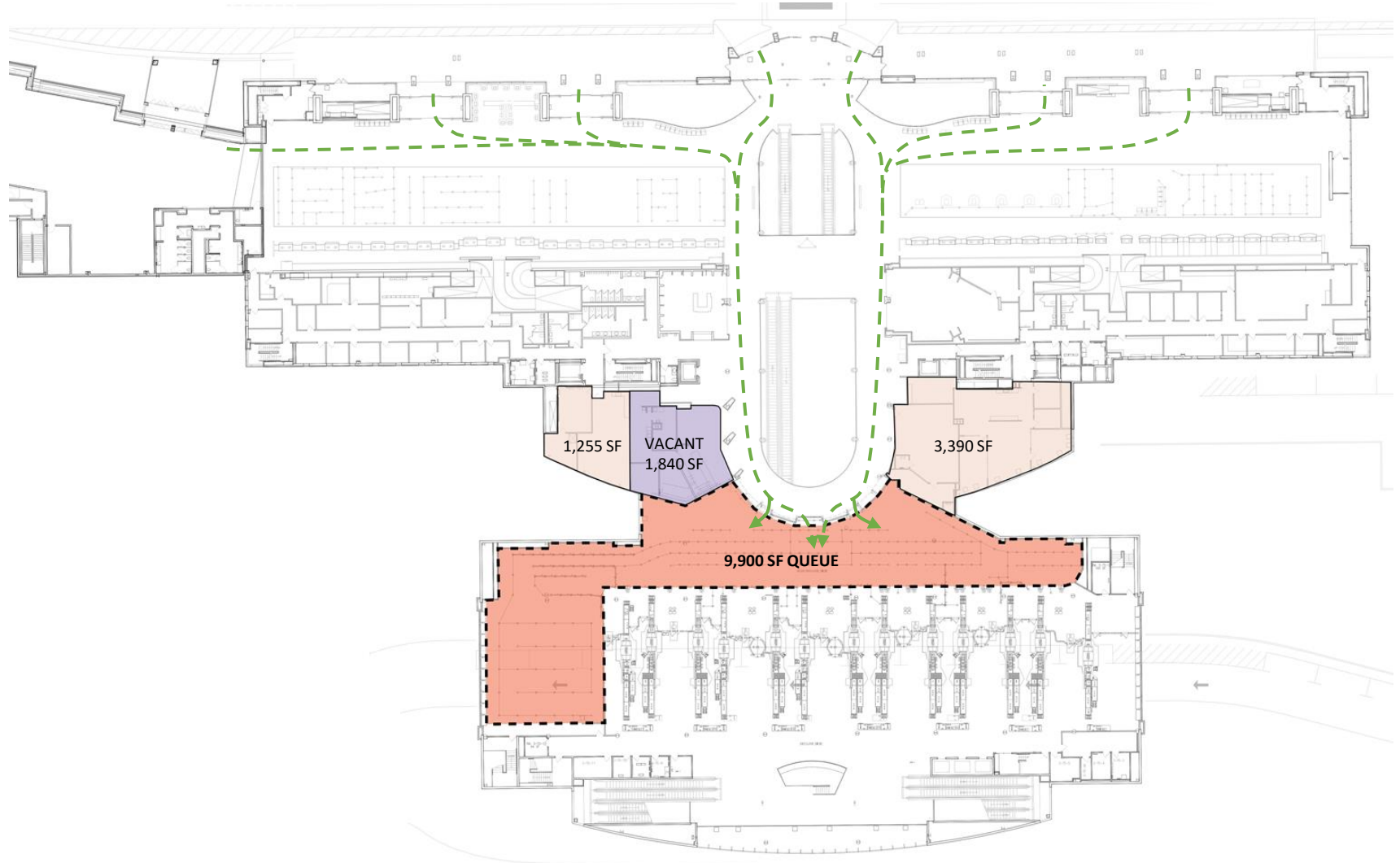


Category	Option 2	13 MAP *	16 MAP *
Total In-Line Positions	106	136	141
Queue Area (SF)	13,400	9,495	9,609
Queue Area per Ticketing Counter	126	70	68

\* Per Corgan's Peak Hour & Facility Requirements Study



# MAIN TERMINAL - LEVEL 2 | Security Screening Checkpoint (SSCP) QUEUE AREA - EXISTING CONDITIONS

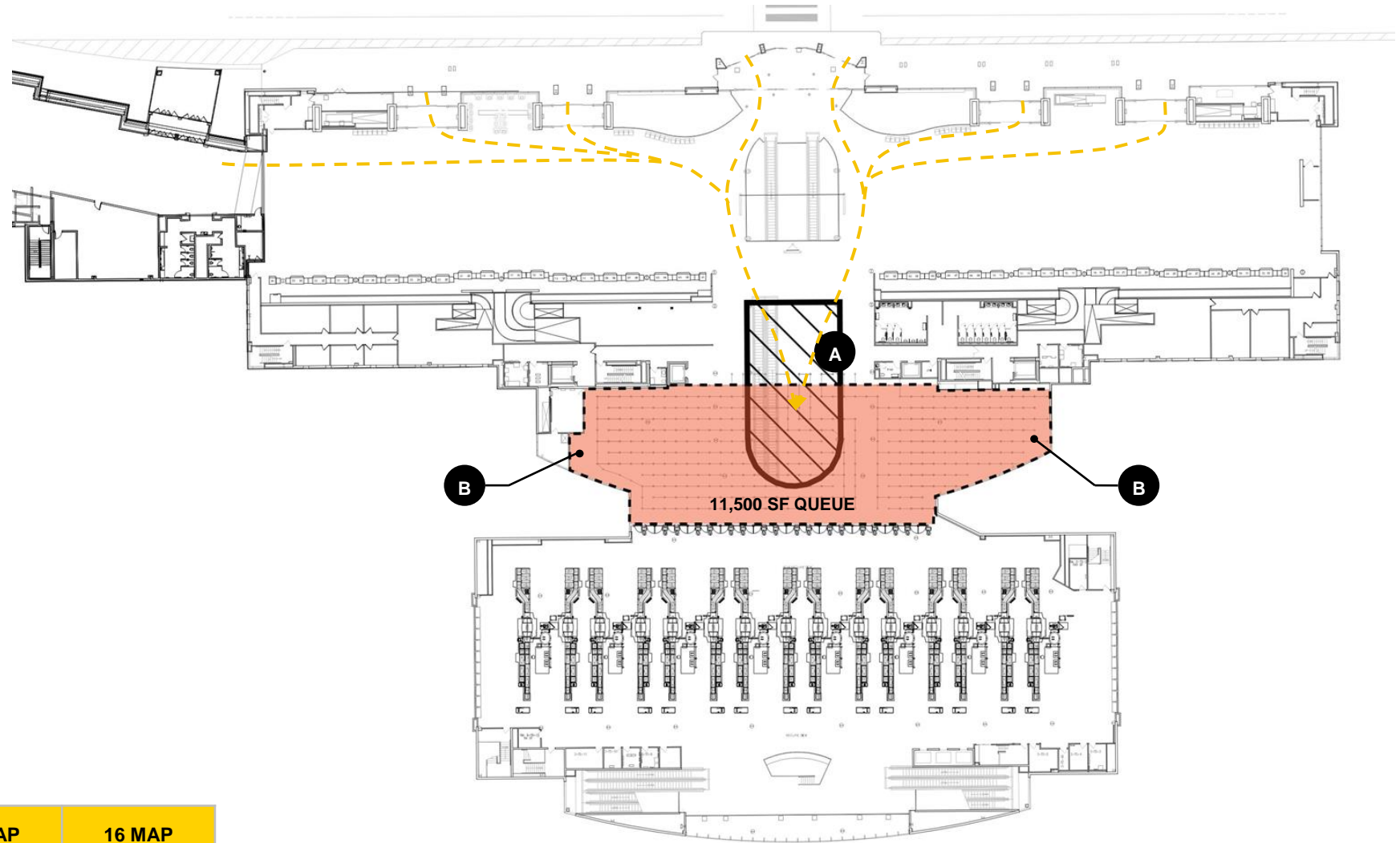


## LEGEND

- SSCP Queue
- Concessions
- Offices



# MAIN TERMINAL - LEVEL 2 | SSCP QUEUE AREA – SLAB INFILL FOR ADDITIONAL SPACE



## COMPONENTS

- A** 3,150 SF slab infill
- B** Reduction in concessions and office space

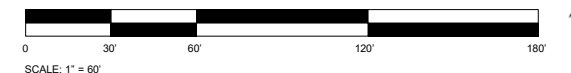
## NOTES

- Central SSCP entry with intuitive wayfinding and generous circulation

## LEGEND

SSCP Queue

Category	Slab Infill Option	13 MAP	16 MAP
No. of Screening Devices	<b>15</b>	<b>16</b>	<b>18</b>
Queue Area (SF)	<b>11,500</b>	<b>9,600</b>	<b>10,800</b>

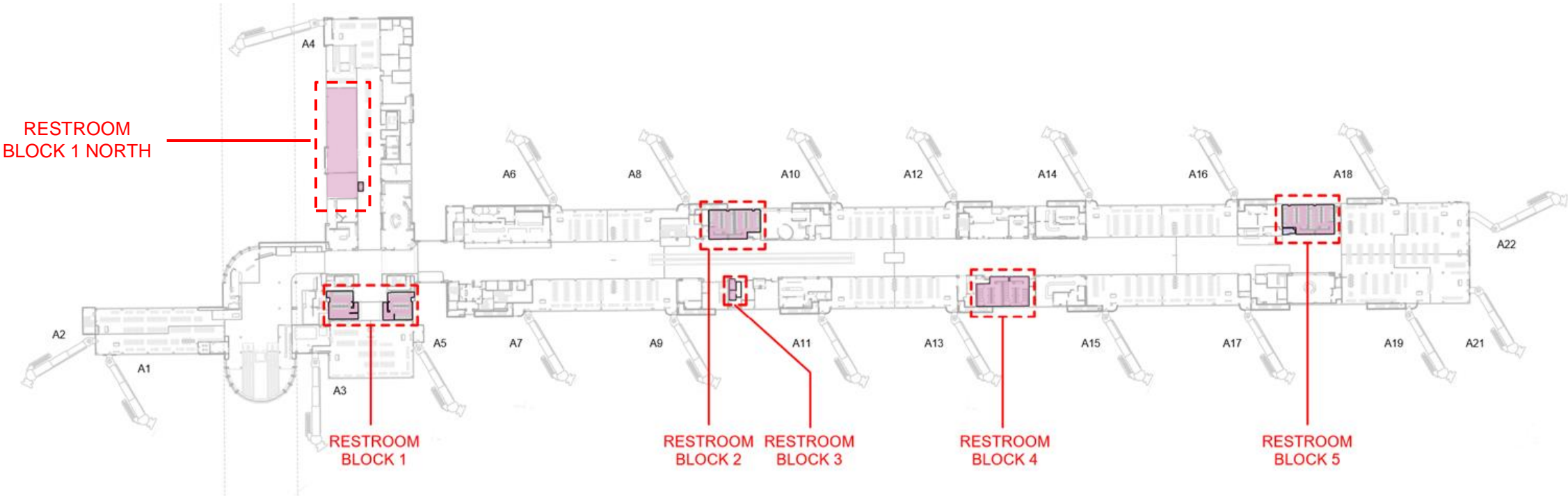




# Concourse restroom improvements

# Airside Restroom Improvements

## CONCOURSE A - PROPOSED RESTROOM IMPROVEMENT LOCATIONS

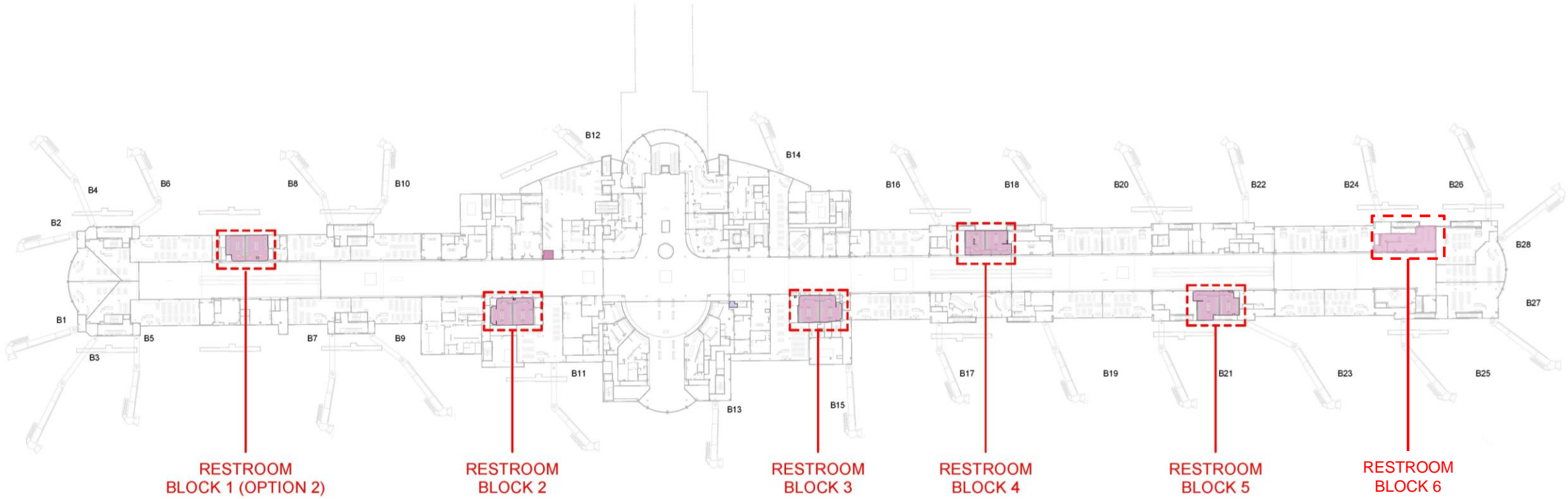


### LEGEND

Restroom



# CONCOURSE B - PROPOSED RESTROOM IMPROVEMENT LOCATIONS



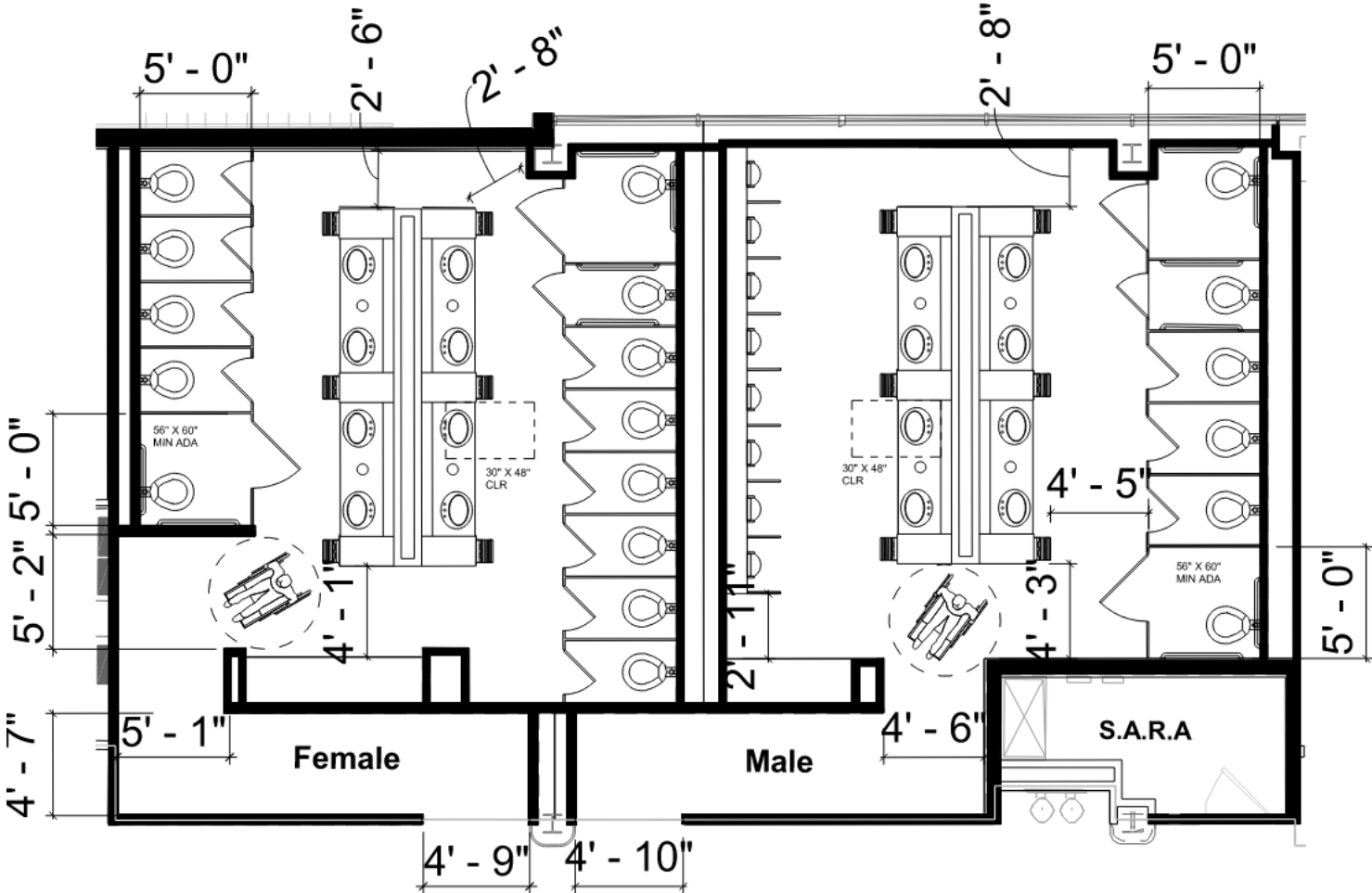
## LEGEND

Restroom





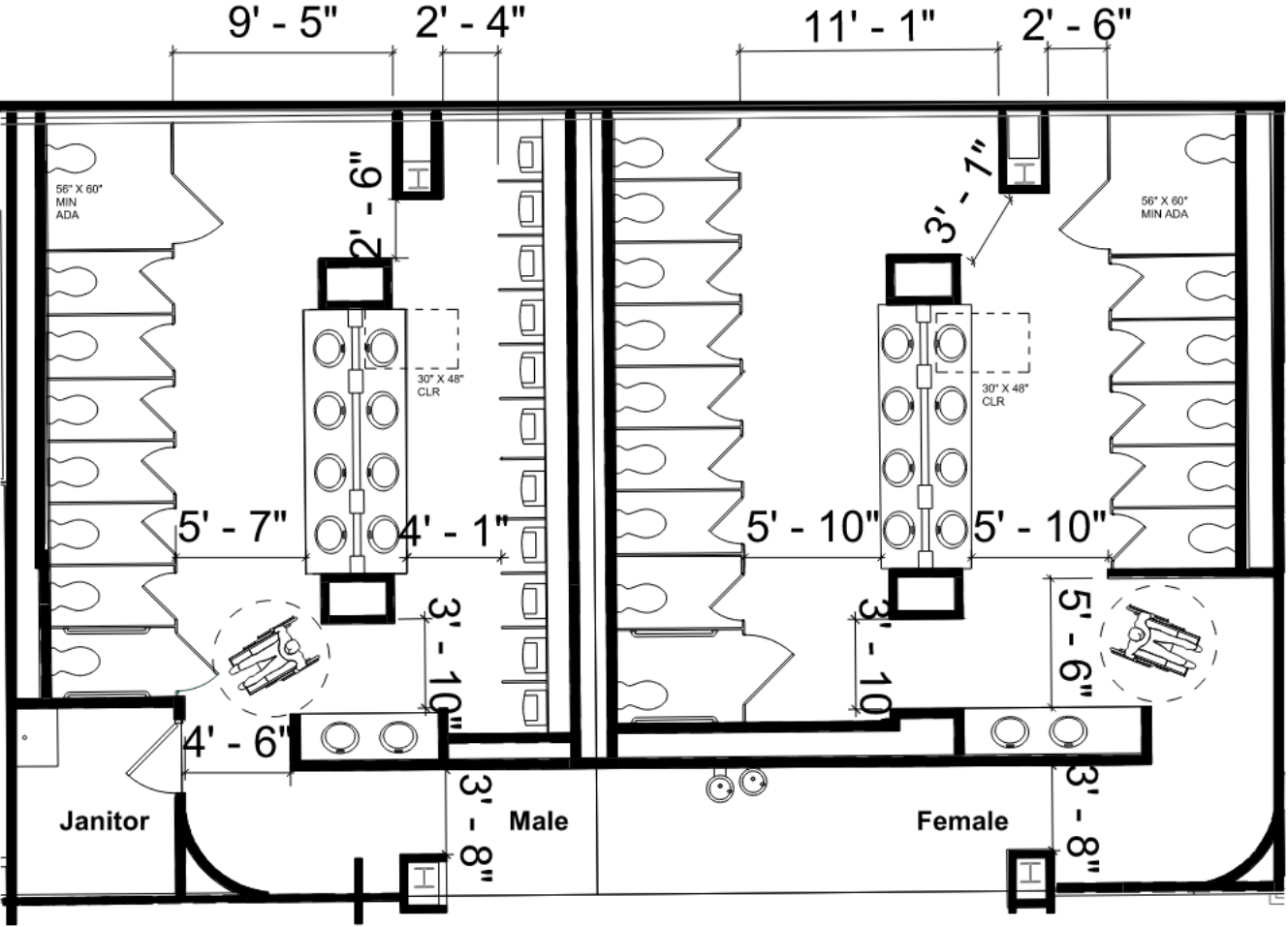
# CONCOURSE A - EXISTING RESTROOM LAYOUT & PROPOSED NEW RESTROOM STANDARD



Category	Existing	Proposed
Standard Stall	3'-0" x 5'-0"	3'-6" x 6'-0"
Ambulatory Stall	3'-0" x 5'-0"	3'-0" x 6'-0"
Accessible Stall	5'-0" x 5'-0"	5'-0" x 6'-0"
Entry Corridor Width/Min. Circulation	< 5'-0"	6'-6" Min.



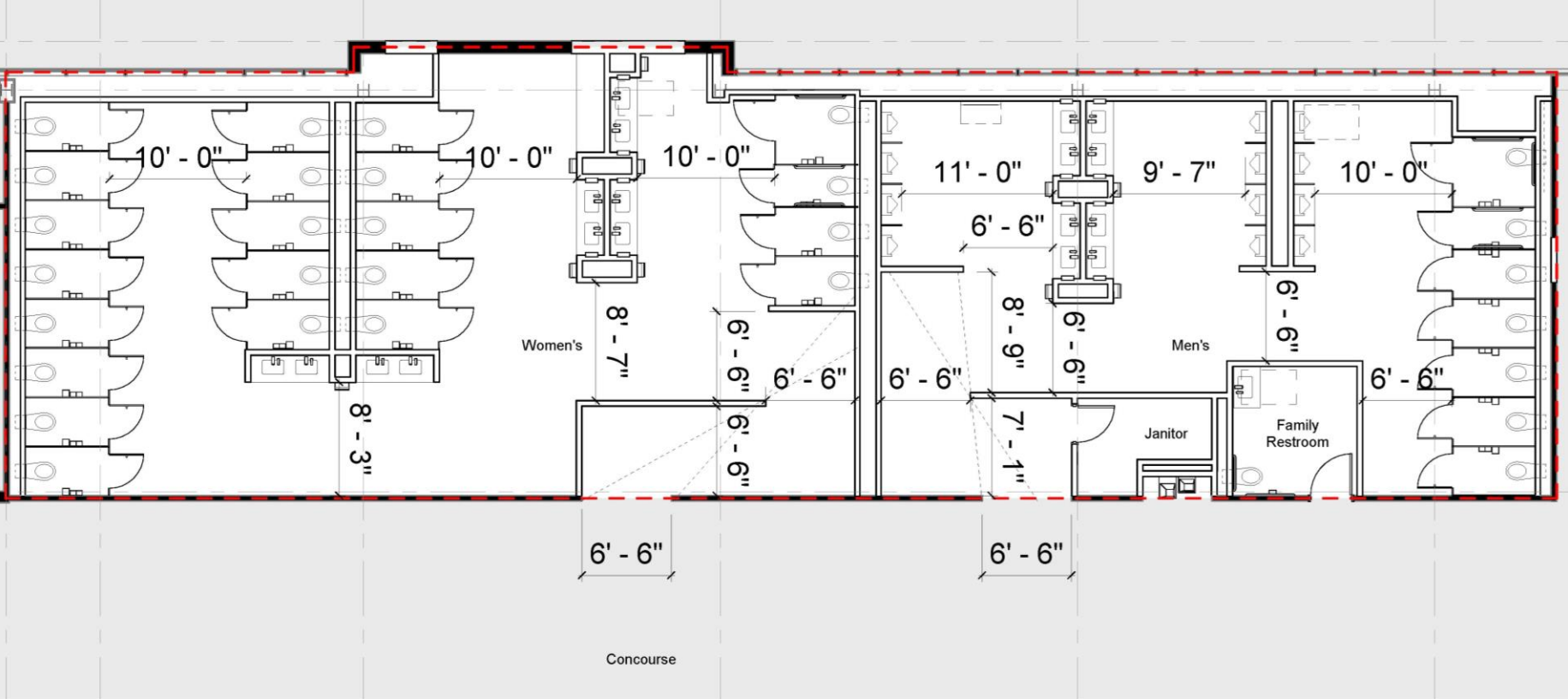
# CONCOURSE B - EXISTING RESTROOM LAYOUT & PROPOSED NEW RESTROOM STANDARD



Category	Existing	Proposed
Standard Stall	3'-0" x 5'-0"	3'-6" x 6'-0"
Ambulatory Stall	3'-0" x 5'-0"	3'-0" x 6'-0"
Accessible Stall	5'-0" x 5'-0"	5'-0" x 6'-0"
Entry Corridor Width/Min. Circulation	< 5'-0"	6'-6" Min.



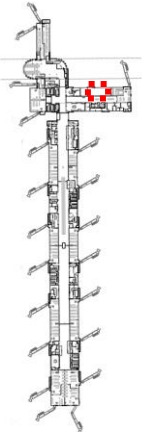
# CONCOURSE - PROPOSED RESTROOM - TYPICAL MEN'S AND WOMEN'S BLOCK APPROACH



Category	Total Existing	Total Proposed
Male Fixtures	20	19
Male Sinks	8	8
Female Fixtures	14	23
Female Sinks	8	11

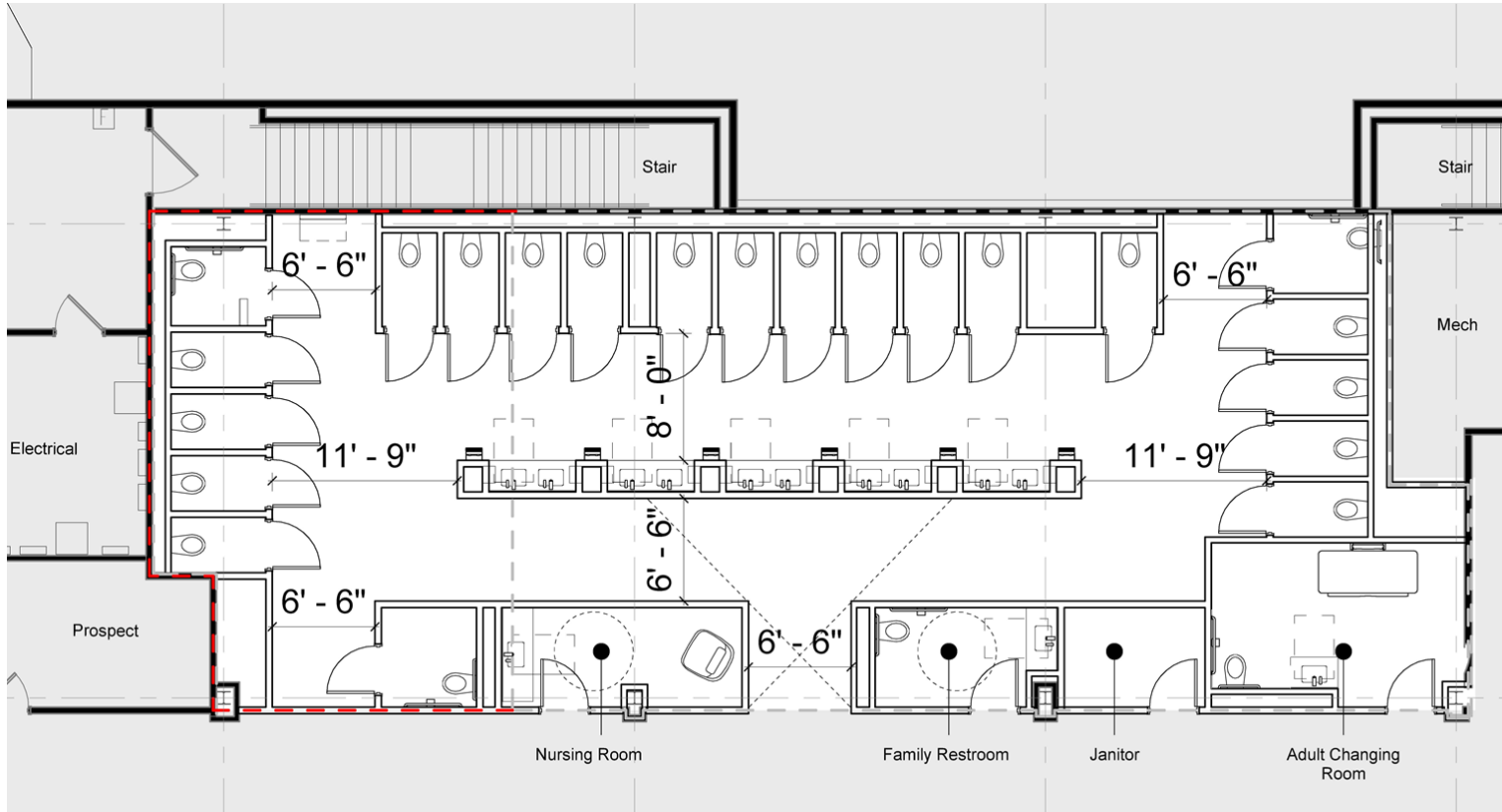
### LEGEND

- Existing Wall
- New Wall
- Existing Block Boundary
- Proposed Block Boundary




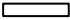




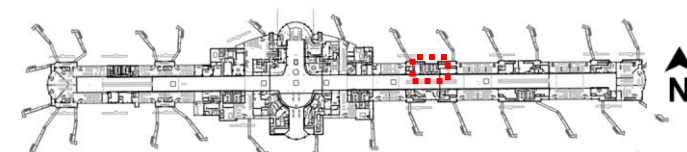
# CONCOURSE - PROPOSED RESTROOM - TYPICAL PRIVACY STALL APPROACH



Category	Total Existing	Total Proposed
Total Fixtures	30	24
Total Sinks	20	12

## LEGEND

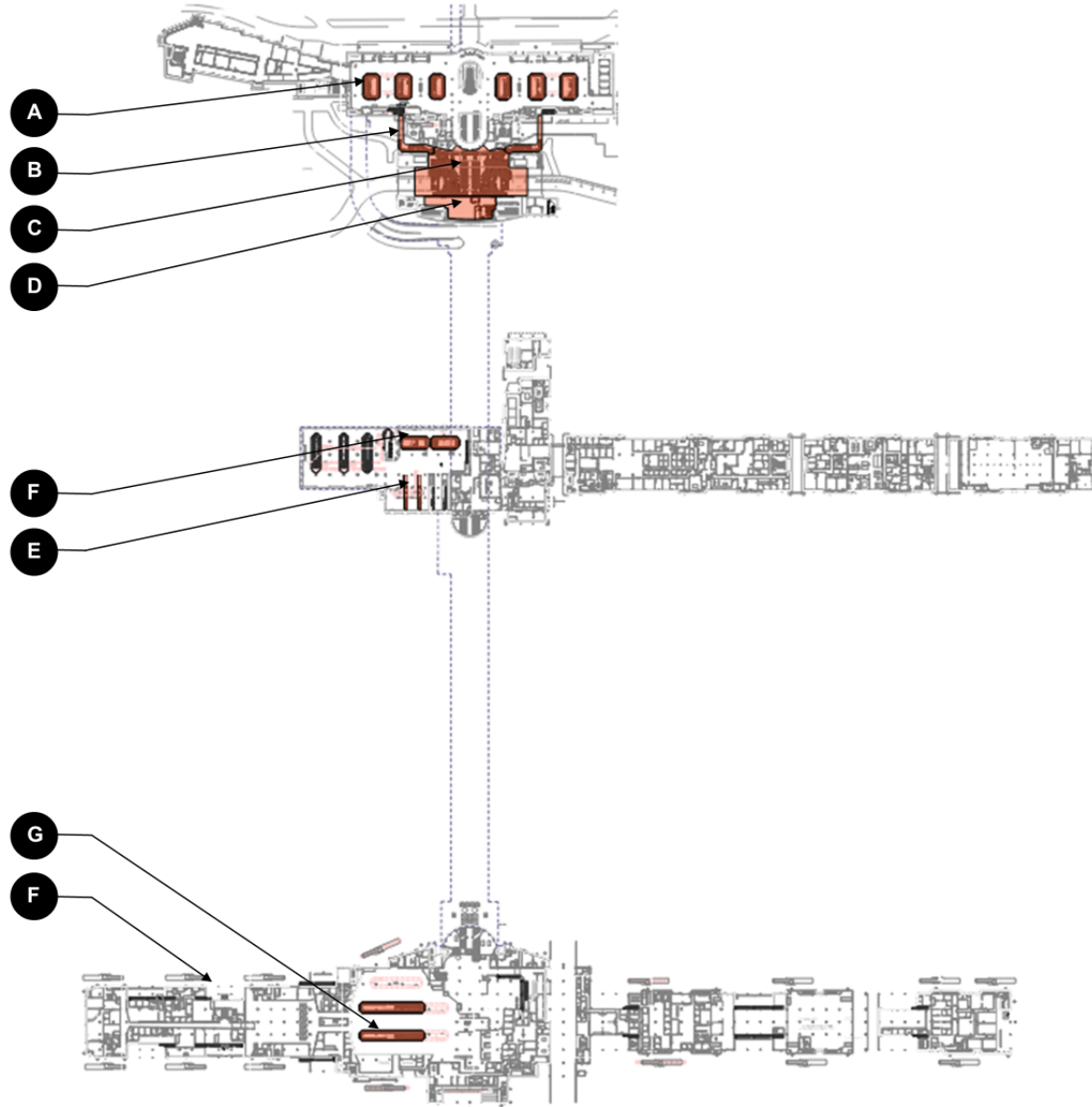
-  Existing Wall
-  New Wall
-  Existing Block Boundary
-  Proposed Block Boundary



**ELEVATE** **CVG**

# Baggage handling improvements

## MAIN TERMINAL - LEVEL 1 BAGGAGE CLAIM/APRON



### COMPONENT

- A** Reconfigure and re-use claim devices, inbound openings, floor and ceiling finishes
- B** Exterior elevated conditioned enclosure for BHS to new CBIS/CBRA
- C** Infill Security Building tunnel for new CBIS/CBRA. New HVAC, electrical power, lighting, fire protection
- D** CBIS/CBRA office support spaces
- E** Additional Concourse A inbound induction feeds
- F** Additional Make-Up devices
- G** Reconfigure and re-use FIS claim devices

### LEGEND

- SSCP/ TSA/ FIS



**ELEVATE** **CVG**

# Vertical circulation improvements

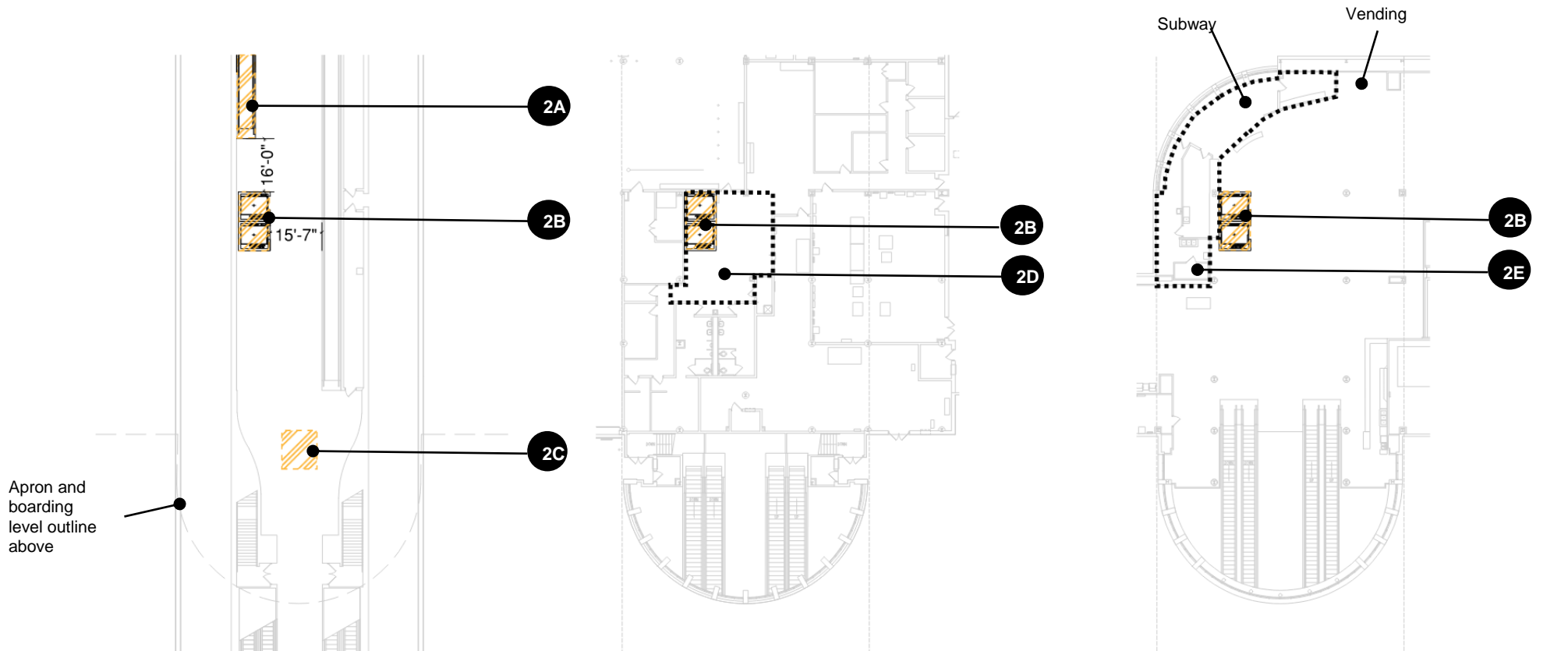
# CONCOURSE A | DUAL ELEVATOR FROM TUNNEL LEVEL TO CONCOURSE LEVEL

## SCOPE

- 2A** Construct west moving walkway shorter version
- 2B** Construct pair of elevators
- 2C** Infill slab
- 2D** Reconfigure airline lease
- 2E** Reconfigure concession

## LEGEND

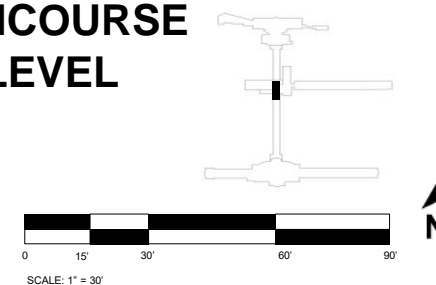
-  New Construction



TUNNEL LEVEL

FIS/ APRON LEVEL

CONCOURSE LEVEL






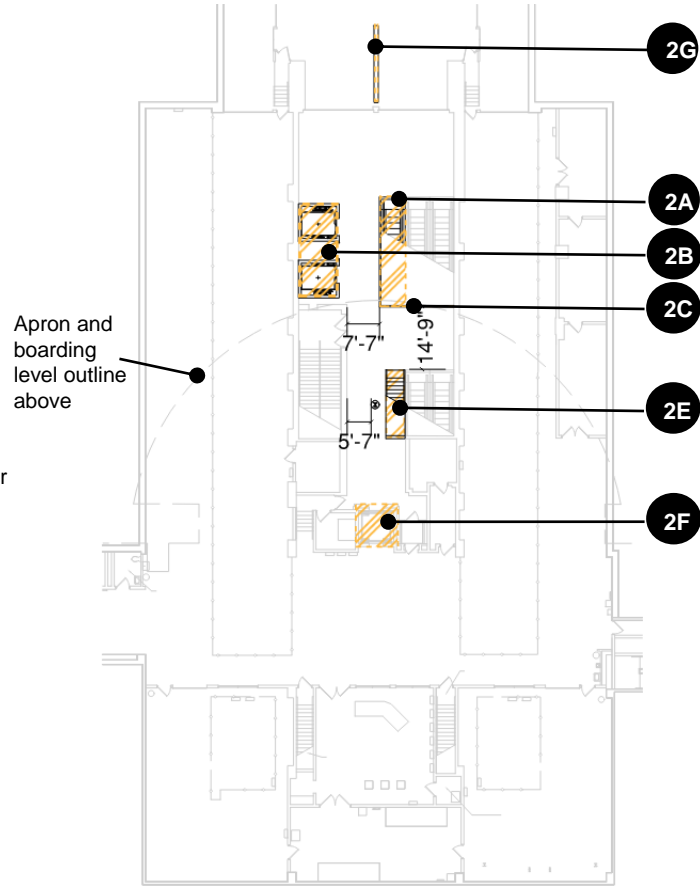
# CONCOURSE B | DUAL ELEVATOR FROM TUNNEL LEVEL TO CONCOURSE LEVEL

## SCOPE

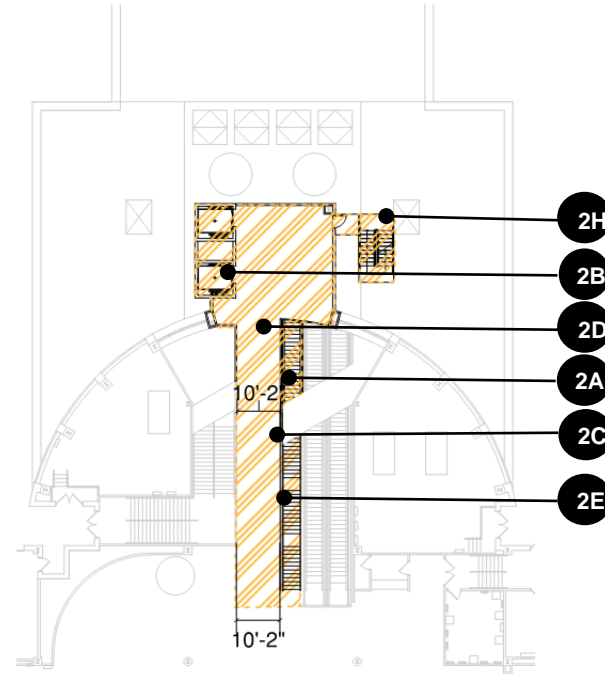
- 2A** Construct third escalator
- 2B** Construct pair of elevators
- 2C** Construct wall and new ceiling under escalator
- 2D** Construct concrete floor
- 2E** Construct staircase from passenger tunnel level to FIS level
- 2F** Remove elevator, infill slab
- 2G** Relocate FIDS monitor
- 2H** Exterior egress stair

## LEGEND

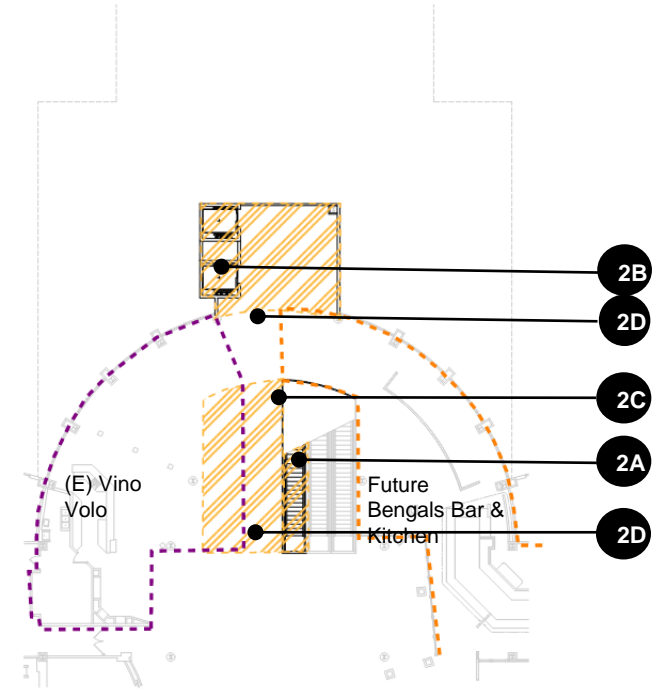
-  New Construction
-  Vino Volo lease line
-  Bengal Bar lease line



**TUNNEL LEVEL**



**FIS/ APRON LEVEL**



**CONCOURSE LEVEL**



SCALE: 1" = 30'



**ELEVATE** **CVG**

# Sense of place improvements





## Consistent design language

Unified aesthetic: Ensure that architectural elements, materials, colors, and signage maintain a cohesive look and feel throughout the terminal and concourses, reflecting the local culture and environment.

## Seamless passenger experience

Integrated themes: Design spaces that provide a harmonious journey from curb to gate, enhancing wayfinding and passenger comfort by incorporating consistent thematic elements in circulation areas, retail areas, and gates.

# Program Management/Construction Management (PM/CM) roles

PM/CM is intended to enhance our Executive Program Management group with specialized expertise and on-the-ground support

- **Key areas of responsibility may include:**

- Project and construction management
- Quality assurance / inspection
- Project controls
- Logistics management
- Safety management
- Operational Readiness Activation and Transition (ORAT)
- Testing and commissioning

**ELEVATE**

**CVG**

# ***Doing business with CVG***

## **Contract & Procurement Administration**

The CVG Contract & Procurement Administration office provides a range of professional purchasing and contracting services to all departments at CVG

Hours: Monday through Friday, 6:30 AM - 5:00 PM

Phone: (859-) 767-7900

Email: [procurement@cvgairport.com](mailto:procurement@cvgairport.com)

Physical location: CVG Centre, 77 Comair Blvd.  
Erlanger, KY 41018

## **Elevate CVG program point of contact**

Director: LaDonna Purcell

[lpurcell@cvgairport.com](mailto:lpurcell@cvgairport.com)

859-767-1572

# ***How to be notified of Elevate CVG procurement opportunities***

## **Planet Bids Online**

- Register
- Choose commodities and services you wish to be notified
- Regularly review and update account information

## **Newspaper advertisement**

## **Trade associations**

## **FAA and Airports Council International (ACI) website**



# ***Online bidding system***

***PlanetBids: [cvgairport.com/bids](http://cvgairport.com/bids)***

**One-time, no cost registration and create login**

**Review current and past procurements**

**For current projects:**

- Download specifications
- View prospective bidders
- View questions, answers, and addenda
- Submit response
- View results

# *Online bidding system*

- Only way to receive solicitation documents
- Only way to submit questions on open solicitations
- Only way to receive addenda that may be issued
- Only way to submit a response to any CVG project
- Pay attention to the submittal requirements
- Allow plenty of time to submit and transmit
- Proposers may submit and withdraw prior to the deadline to test the system
- Must download all documents and acknowledge all addenda before submitting a response
- Prime or lead firm will submit the response

# ***Overview of solicitation timeline***

## **Anticipate release of RFPs**

- Program Management/Construction Management (PM/CM) will release in late June
- Design-Builder (DB) will release in early July

## **Both solicitations will have a pre-proposal meeting and site visit**

- A combined pre-proposal meeting for PM/CM and DB is tentatively scheduled for July 23
- Second pre-proposal meeting for DB tentatively scheduled for August 6
- Only opportunity to visit the secure area of the project site
- Be mindful of RSVP requirements which will be in the solicitation documents

# Overview of solicitation timeline

- All solicitations will have a Q&A period
- PM/CM will be posted/open for about 6 weeks
- DB will be posted/open for about 8 weeks
- Proposals will be evaluated, firms shortlisted, followed by interviews (if needed)
- Evaluation progress will be communicated to all proposers
- Anticipate recommending award for both solicitations at November 15, 2024 Board meeting



# *Solicitation rules of engagement*

## Elevate CVG

- Communication restriction
- Q&A submissions
- Insurance requirements have not been finalized
  - Considering Owner Controlled Insurance Program (OCIP) for GL and/or worker's compensation
  - Would consider a Contractor Controlled Insurance Program (CCIP) if proposed
- Signatory authority
  - No CVG employee has authority to sign any agreement, contract document, or order form except the CEO
- Contracts
  - Modified DBIA Forms 530 and 535
  - Copy will be included with the solicitations

# Solicitation rules of engagement

## Elevate CVG

- Teaming (UPDATED 6/5/24)
  - Firms that have worked with the executive program management firm are eligible to participate in the PM/CM procurement but are not eligible to participate in the DB procurement
  - Design Builder: **Builder, architect, structural engineer, and MEP** may participate on only one design build team
  - Firms may be subcontractor/subconsultant on the PM/CM team or on the Design Builder team, but not both
  - Teaming conflicts do not apply to Disadvantaged Business Enterprises (DBEs)

# ***Best way to communicate with C&PA***

- Contact Contract & Procurement  
Administration***
- (859) 767-7900***
- [procurement@cvgairport.com](mailto:procurement@cvgairport.com)***



**ELEVATE** **CVG**

# *Question and Answer Session*

*Thank you for your  
interest!*