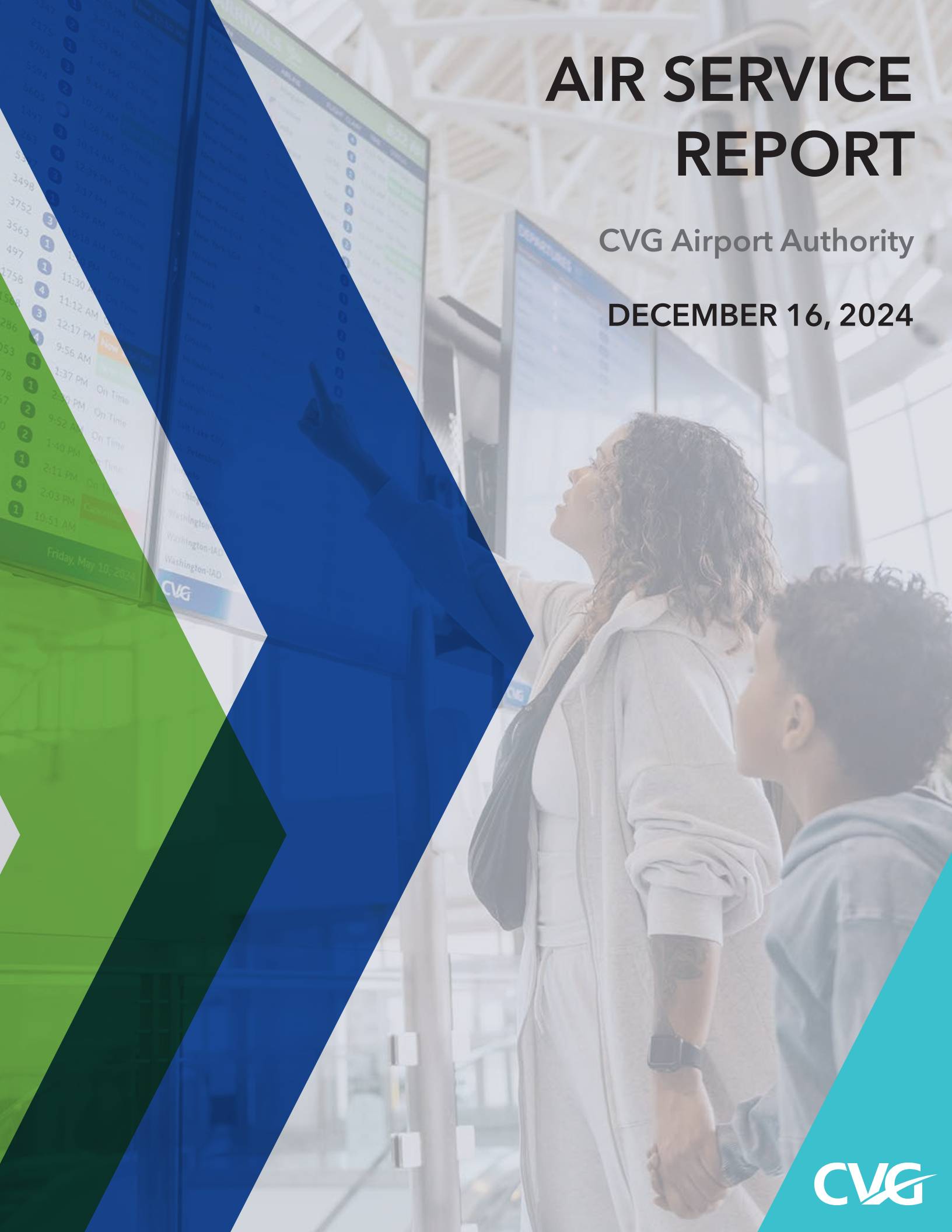


AIR SERVICE REPORT

CVG Airport Authority

DECEMBER 16, 2024

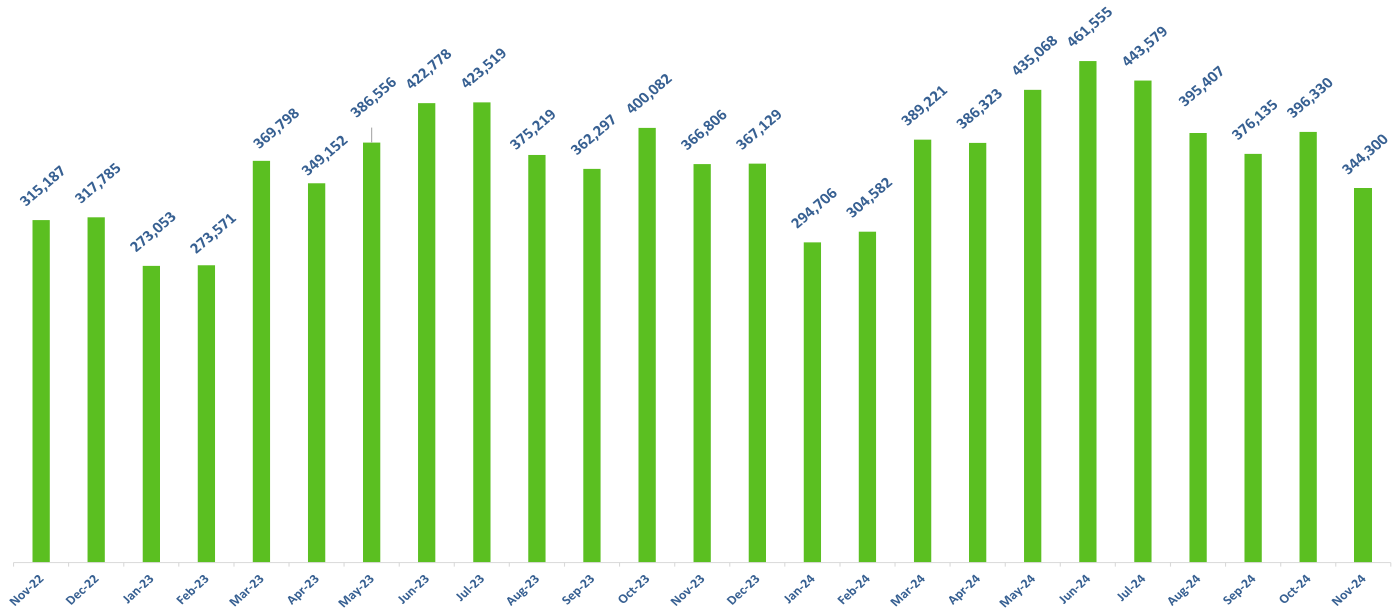


Cincinnati/Northern Kentucky International Airport

Air Service Report

November 2024

Passenger Enplanements



Comments:

- Enplanements in November were 344,300, a decrease of 6.1 percent compared to November 2023.
- Year to date, enplanements are 4,227,206 an increase of 5.6 percent compared to 2023.

Passenger Carrier Enplanements

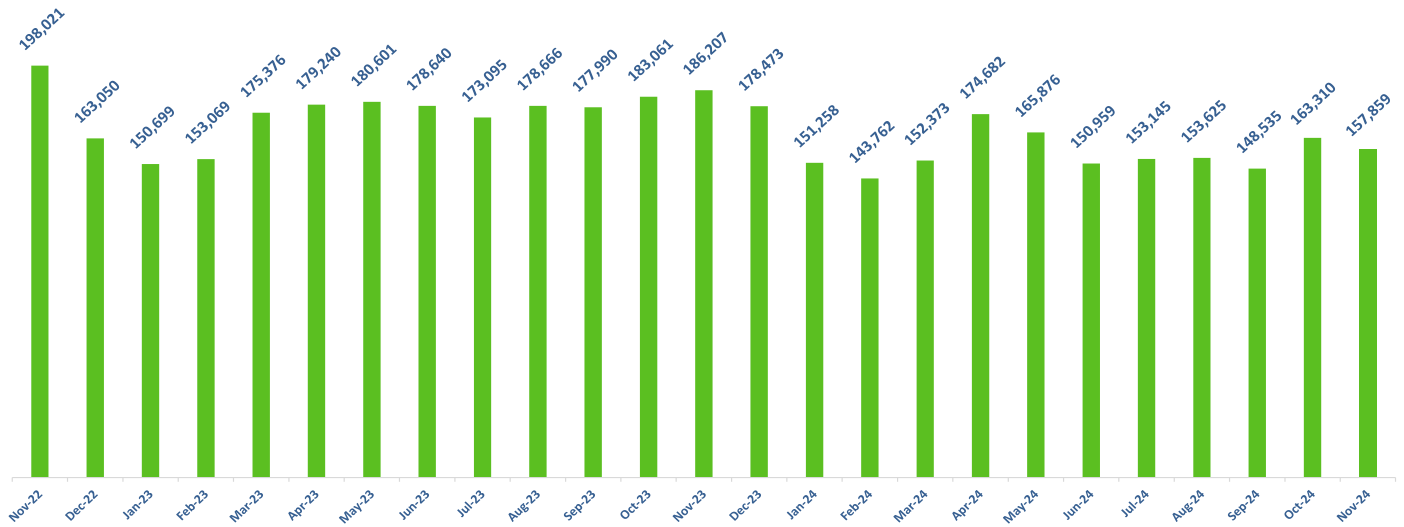
November 2024	Enplaned Passengers			
	Monthly	% '24 vs '23	YTD	% '24 vs '23
Air Canada	1,313	-10.1%	24,691	14.6%
American	71,441	1.1%	836,818	9.9%
Delta	123,589	-3.2%	1,477,404	3.9%
United	36,152	-0.1%	439,238	7.3%
Alaska	3,536	27.0%	43,104	-4.5%
Allegiant	30,661	-20.4%	431,558	-10.6%
British Airways	2,918	17.0%	38,607	85.5%
Frontier	49,668	-15.4%	624,586	20.4%
Southwest	19,604	-8.7%	243,809	-4.5%
Sun Country	1,195	-23.5%	14,058	-8.9%
Breeze	1,372	-32.0%	34,164	17.2%
Other Scheduled Flights	367	-28.3%	7,774	-21.7%
Non-Scheduled Flights	2,484	-11.2%	11,395	1.4%
Total	344,300	-6.1%	4,227,206	5.6%

Comments :

- Scheduled daily departures ranged in number from a low of 104 on Tuesdays to a high of 137 on Sundays. On average, CVG had 125 scheduled daily departures in November.
- Nonstop Cities – In November airlines offered nonstop scheduled service to 46 domestic destinations and 5 international destinations.

Cincinnati/Northern Kentucky International Airport Air Service Report November 2024

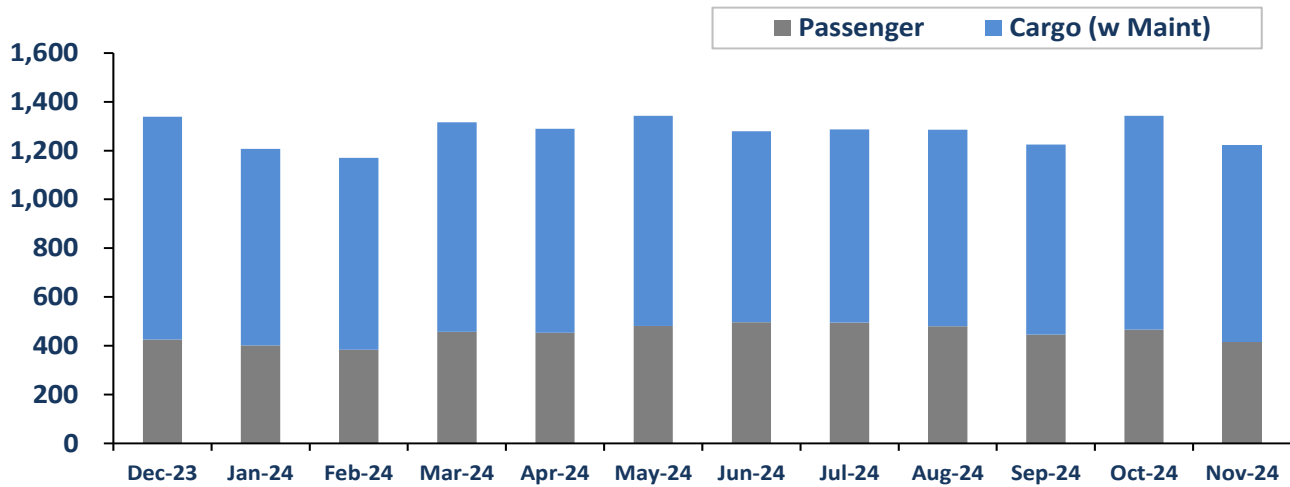
Cargo Volume



Comments:

- Total cargo in the month of November 2024 was 157,859 tons compared to November 2023 tonnage of 186,207, a decrease of 15.2 percent.
- Year to date, cargo tonnage is 1,715,382, a decrease of 10.5 percent.

Landed Weight



Comments:

- Landed weight from passenger operations in the month of November decreased 2.2 percent to 418.3 million pounds compared to 427.8 million pounds in November 2023
- Landed weight from cargo operations in the month of November decreased 16.5 percent to 805.5 million pounds compared to 964.7 million pounds in November 2023.
- Total landed weight in November 2024 decreased 12.1 percent compared to November 2023. YTD, total landed weight has decreased 3.3 percent compared to 2023.