



Embrace What's Next



**Kenton County Airport Board
Air Service Update**

September 21, 2020

Monthly Enplaned Passenger Trend



Monthly Volume: September 2018 – August 2020



August 2020 enplanements down year-over-year 69 percent to 125,172; YTD down 60 percent

Enplaned Passenger Detail by Carrier



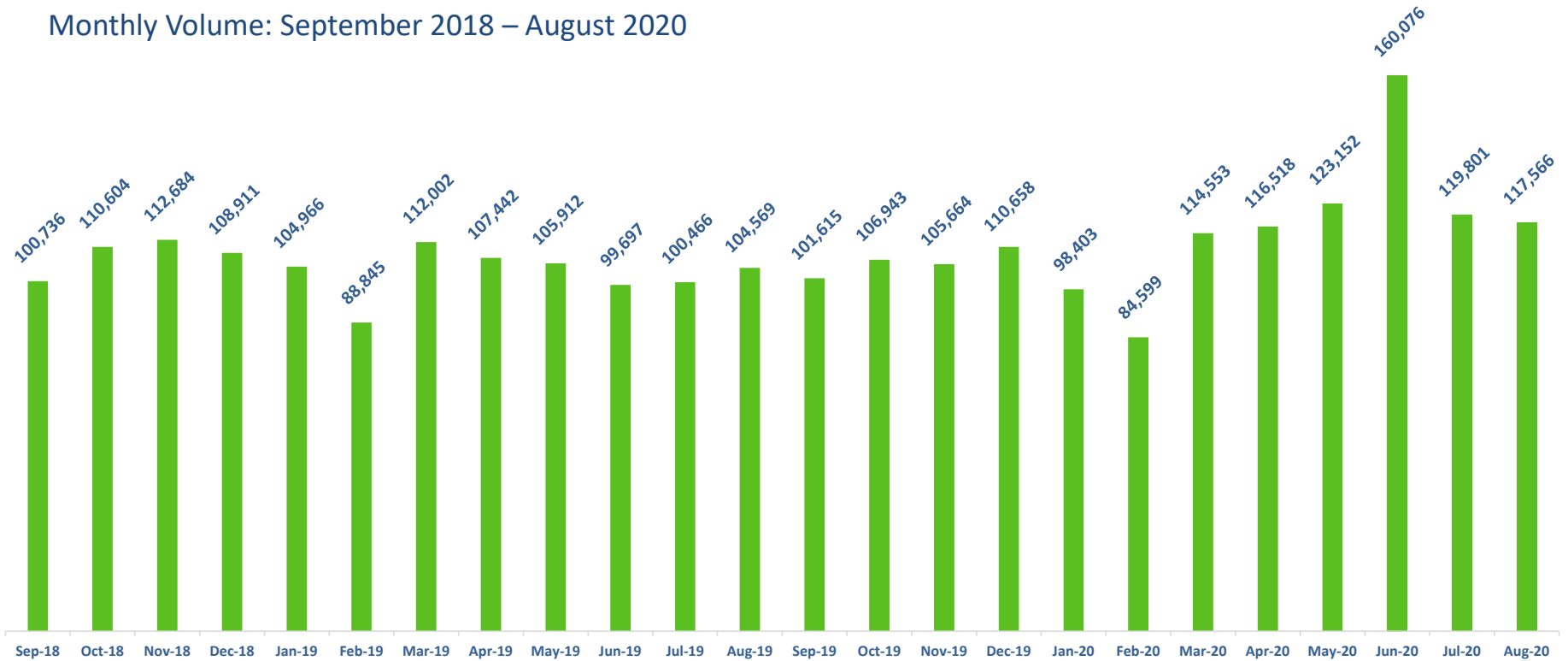
| August 2020 | Enplaned Passengers | | | |
|-------------------------|---------------------|---------------|------------------|---------------|
| | Monthly | % '20 vs '19 | YTD | % '20 vs '19 |
| Air Canada | - | -100.0% | 5,090 | -77.2% |
| American | 24,972 | -55.5% | 215,912 | -48.5% |
| Delta | 32,901 | -82.3% | 460,183 | -66.9% |
| United | 12,314 | -74.4% | 101,868 | -69.5% |
| Allegiant | 25,442 | -40.6% | 218,695 | -42.3% |
| Frontier | 19,827 | -54.3% | 142,116 | -52.9% |
| Southwest | 9,667 | -63.4% | 85,743 | -57.7% |
| Other Scheduled Flights | 0 | -100.0% | 1,259 | -80.7% |
| Non-Scheduled Flights | 49 | -94.9% | 1,602 | -82.1% |
| Total | 125,172 | -69.2% | 1,232,468 | -59.8% |

All Carriers Impacted by coronavirus passenger travel restrictions

Monthly Cargo Trend



Monthly Volume: September 2018 – August 2020



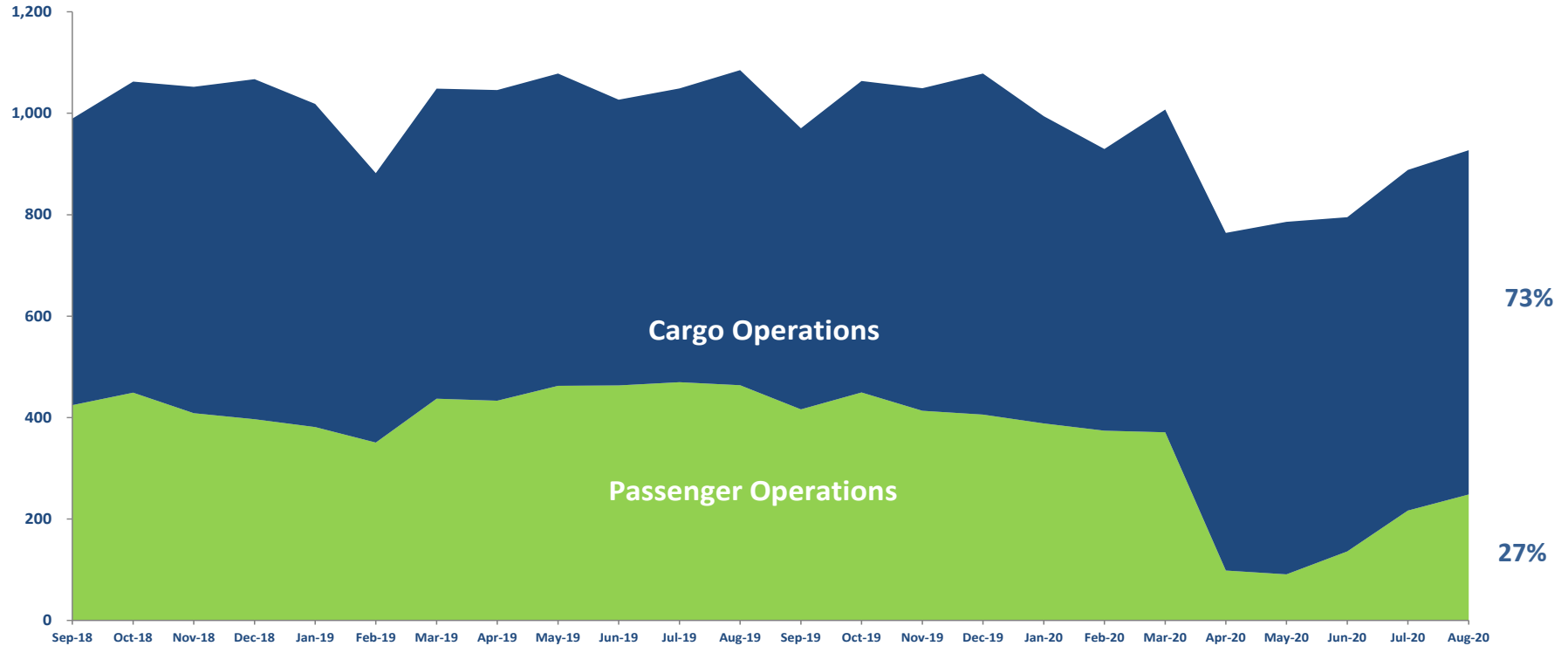
August cargo volume 117,566 tons, +12.4 percent year-over-year; YTD +13.4%

Source: CVG Airport Statistics: Cargo Data

Monthly Landed Weight Trend



Landed weight (1,000 lbs) by Operation Type September 2018 – August 2020



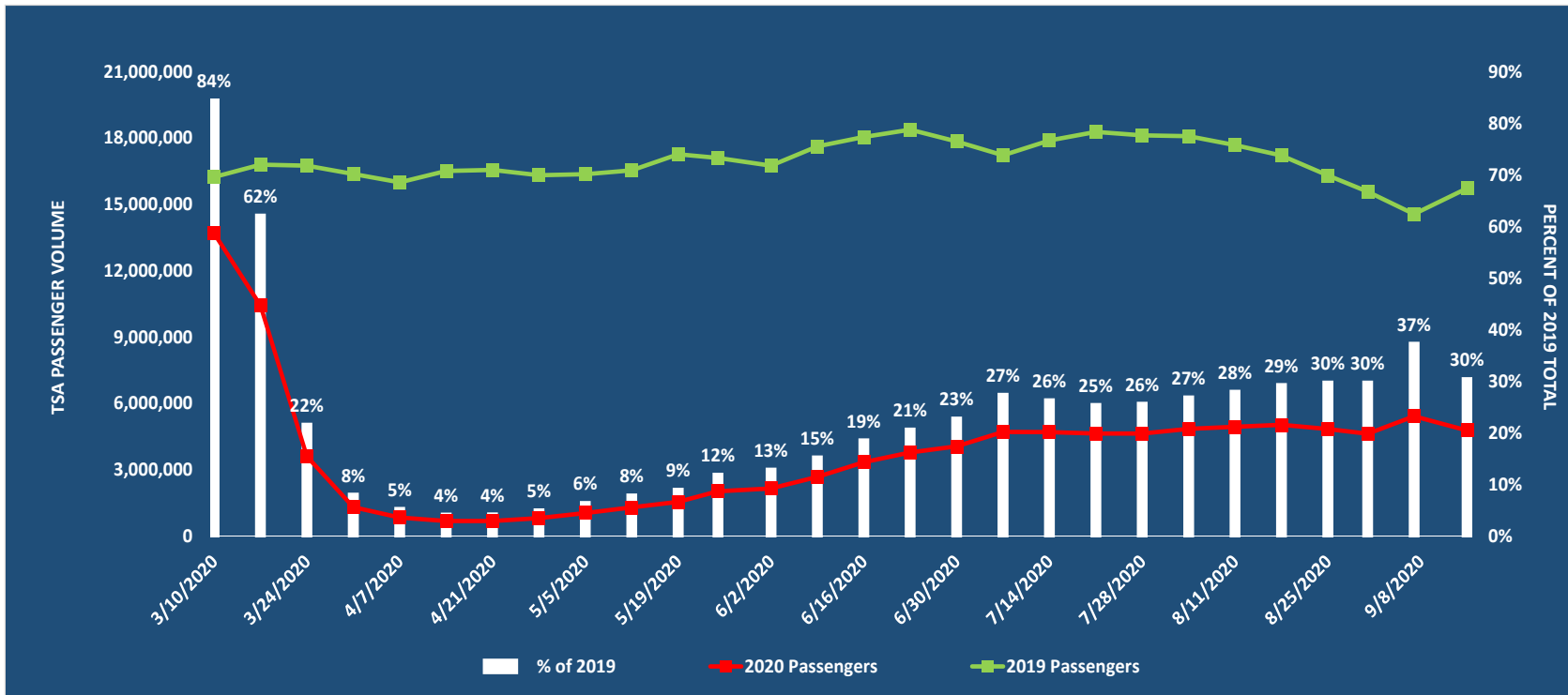
August 2020 overall landed weight was down 14.5 percent year-over-year; YTD -13.9 percent

Industry Updates

U.S. System – TSA Security Passenger Throughput Trend



March 1 – September 15 Weekly Passenger Totals (All Airports)



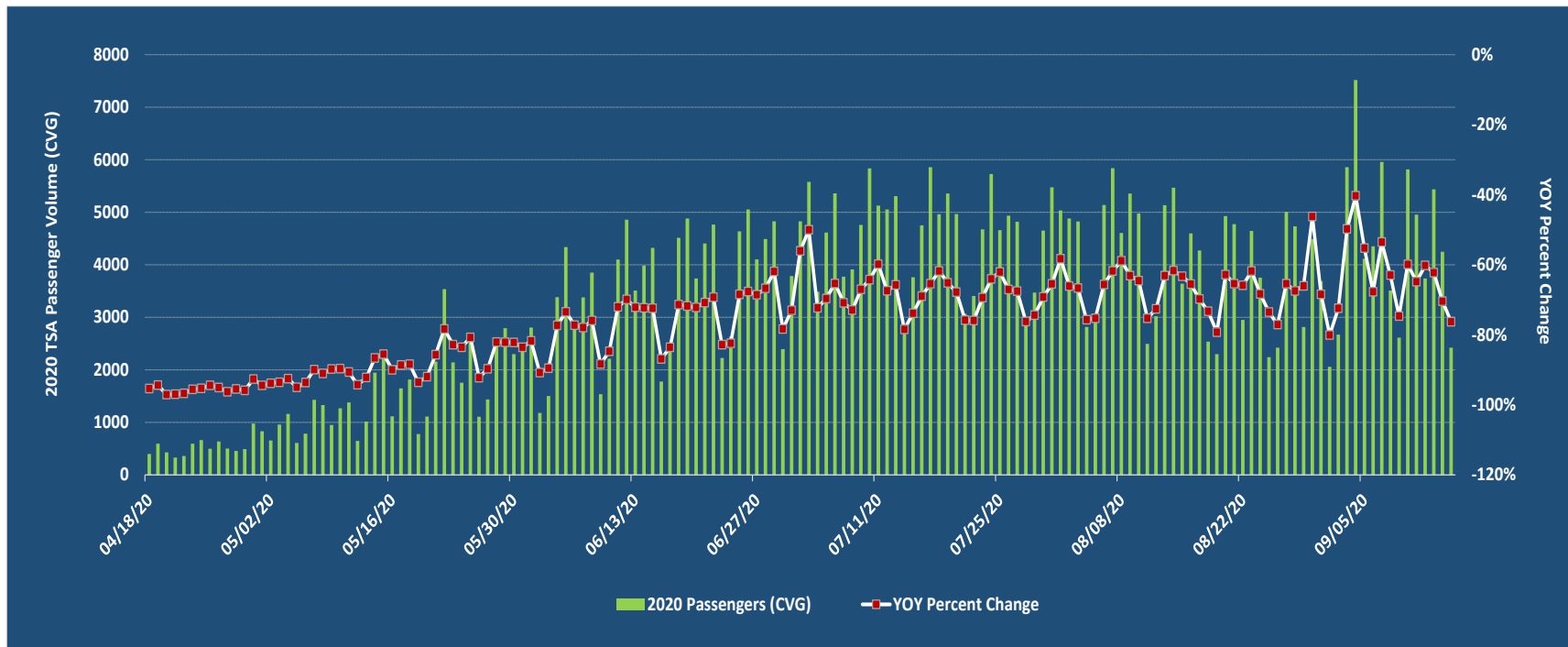
Year-Over-Year U.S. Passenger Volumes are Approximately 30% of 2019 Levels

Source: TSA.gov/Coronavirus/Passenger-Throughput as of July 15, 2020

CVG – TSA Security Passenger Throughput Trend



April 18 – September 15th CVG Daily Passenger Totals & YOY Change

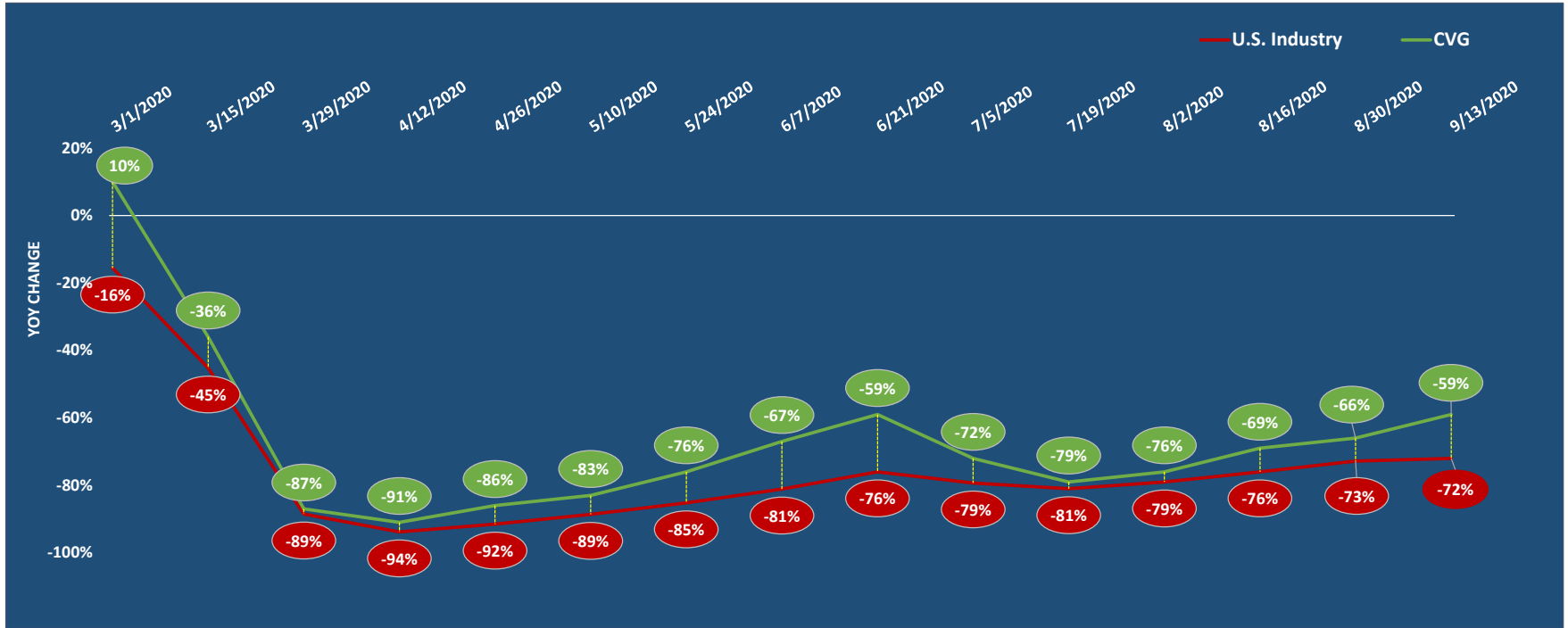


CVG Year-Over-Year Passenger TSA Throughput declined on average 65% over the last 30 days

Industry Airline Ticket Sales Activity



Future Travel - Year over Year Ticket Volume Change (7 Day Rolling Average)



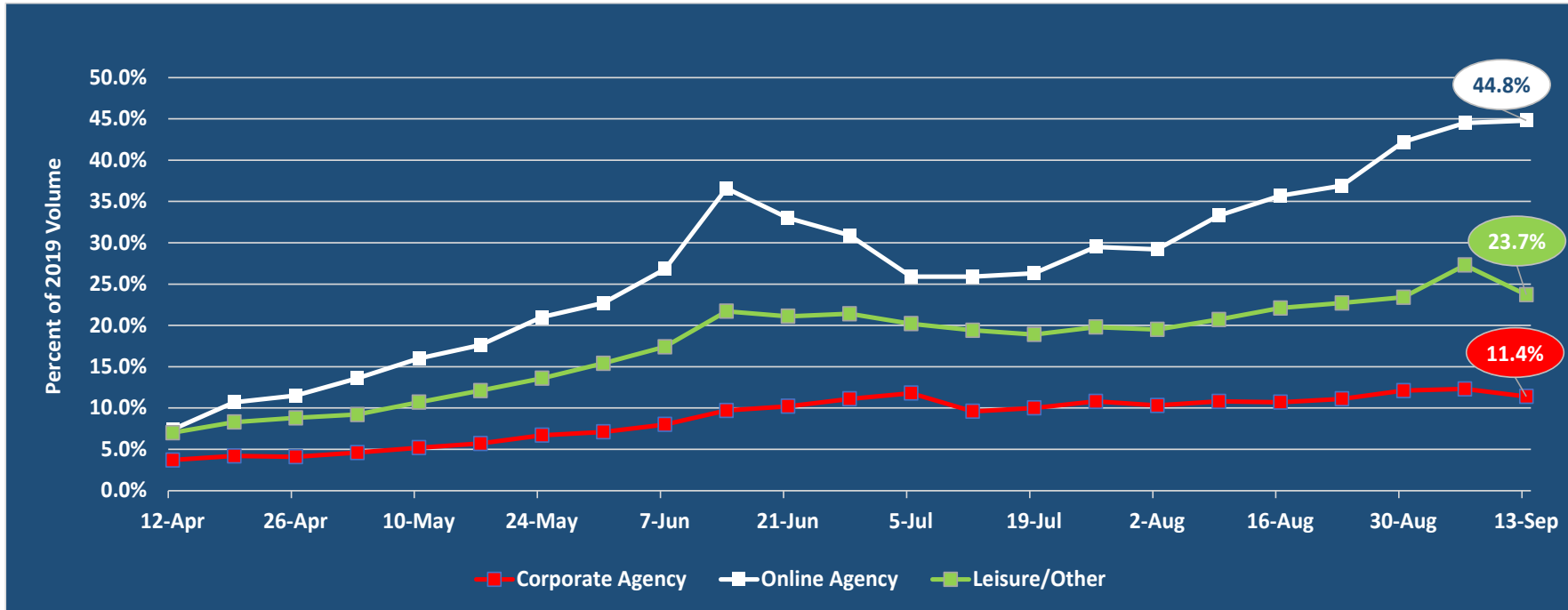
CVG Demand Trends are favorable compared to U.S. industry but remain soft going into 3rd quarter

Source: Airline Reporting Corporation: Results are based on weekly sales data ending September 13, 2020, from 11,597 U.S. retail and corporate travel agency locations, and online travel agencies. Results do not include sales of tickets purchased directly from airlines and are not net of refunds or exchanges.

Industry Airline Ticket Sales Activity By Distribution Channel



Future Travel - Year over Year Ticket Volume Change by Ticket Type (7 Day Rolling Average)

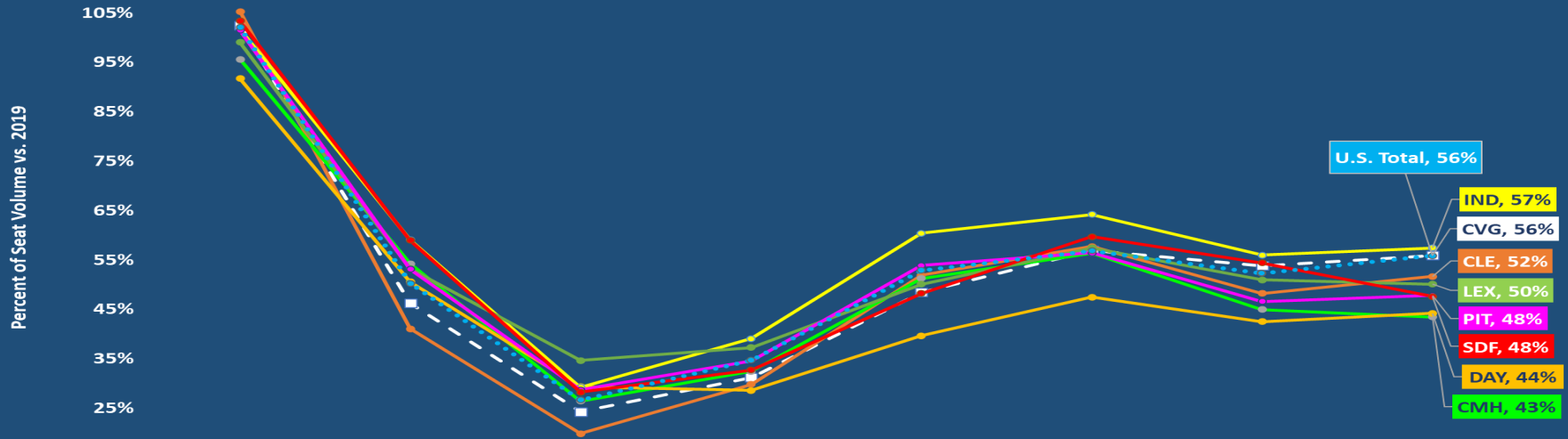


Majority of Demand Recovery has Taken Place in the Online Booking Channel (VFR)

Peer Airport Capacity Trends – COVID Period



Regional Peer Airport Seat Capacity Trend – 2020 Percent of Seat Volume vs. 2019 by Month (US. Domestic Only)

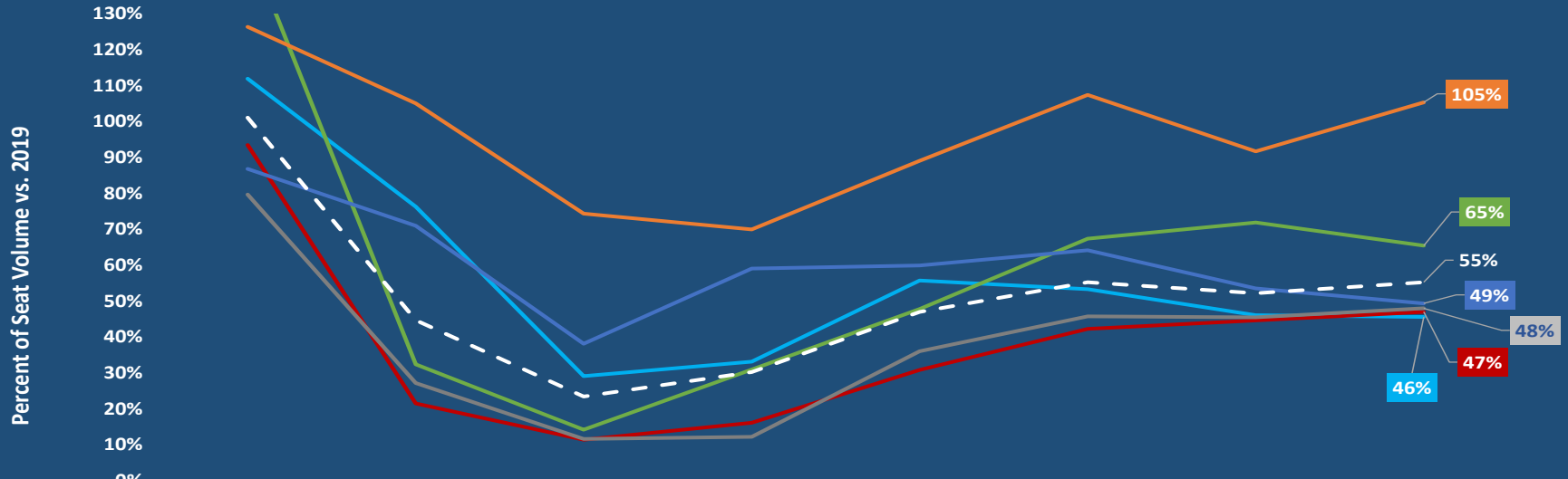


| | March | April | May | June | July | August | September | October |
|------------|-------|-------|-----|------|------|--------|-----------|---------|
| CVG | 102% | 46% | 24% | 31% | 48% | 57% | 54% | 56% |
| CLE | 105% | 41% | 20% | 30% | 52% | 58% | 48% | 52% |
| CMH | 96% | 54% | 26% | 32% | 51% | 56% | 45% | 43% |
| DAY | 92% | 51% | 29% | 29% | 40% | 47% | 43% | 44% |
| IND | 102% | 59% | 29% | 39% | 60% | 64% | 56% | 57% |
| LEX | 99% | 53% | 35% | 37% | 50% | 57% | 51% | 50% |
| PIT | 101% | 53% | 29% | 35% | 54% | 56% | 47% | 48% |
| SDF | 103% | 59% | 28% | 33% | 48% | 60% | 54% | 48% |
| U.S. Total | 102% | 50% | 27% | 35% | 53% | 57% | 52% | 56% |

CVG Passenger Carrier Seat Capacity Trends



2020 Percent of Seat Volume Compared to 2019



| | March | April | May | June | July | August | September | October |
|-----------|-------|-------|-----|------|------|--------|-----------|---------|
| American | 112% | 76% | 29% | 33% | 56% | 53% | 46% | 46% |
| Delta | 93% | 21% | 11% | 16% | 31% | 42% | 45% | 47% |
| Frontier | 150% | 32% | 14% | 31% | 48% | 67% | 72% | 65% |
| Allegiant | 126% | 105% | 74% | 70% | 89% | 107% | 92% | 105% |
| United | 80% | 27% | 12% | 12% | 36% | 46% | 45% | 48% |
| Southwest | 87% | 71% | 38% | 59% | 60% | 64% | 54% | 49% |
| TOTAL | 101% | 45% | 23% | 30% | 47% | 55% | 52% | 55% |

CVG

Embrace What's Next

