

## Protect Your DocuSign Agreements with Round-the-Clock Activity Tracking

Preventing damage from unauthorised activity is a major challenge for organizations. While DocuSign meets or exceeds stringent US, EU, and global security standards, your agreements can only be as secure as your organisation's credential management and operational integrity.

### DocuSign Monitor

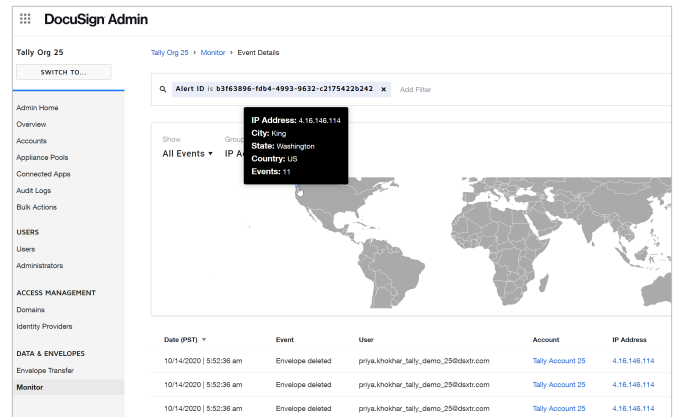
Monitor provides an additional layer of security to help guard your critical agreements. Using advanced analytics to track eSignature web, mobile and API account activity across the enterprise, Monitor empowers security teams to:

- Detect potential threats from outsiders or insiders, with rules-based alerts
- Investigate incidents with ready access to in-depth information
- Respond quickly with decisive action to verified threats

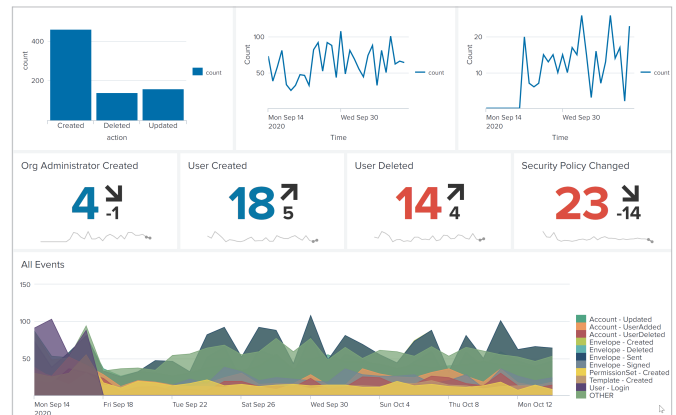
Monitor includes pre-built alerts for common types of potentially suspicious user activity, and provides round-the-clock tracking of more than 40 types of events. DocuSign's mature telemetry includes detailed information—like IP address, location and history—to support efficient incident investigation. With this timely information, security teams and administrators can take quick action to mitigate and resolve threats to your critical agreements, before they lead to significant damage.

### Monitor API

The Monitor API can deliver this activity information directly to your existing security stack or data visualisation tool, integrating easily with tools like Splunk, Tableau and Power BI. Using the API provides your security team the flexibility to customise dashboards and alerts based on your specific industry, security best practices and regulatory requirements.



Monitor provides data visualisation, alert history and details from the DocuSign Admin Centre.



Monitor can integrate directly with your existing security stack (shown here in Splunk).

## Monitor helps teams:

### Detect unauthorised activity in near real-time

Monitor tracks more than 40 types of events—including login attempts, password changes and envelope deletions—to help you identify internal or external threats.

### Tailor alerts to your organisation's particular needs

In addition to providing pre-built, rules-based alerts, Monitor allows you to create custom alerts based on your industry, security best practices and regulatory requirements.

### Investigate with key information to respond sooner

With ready access to in-depth alert details like IP address, location and history, Monitor helps security teams prioritise and rapidly investigate security incidents.

### Integrate with your existing security stack

The Monitor API can send telemetry data directly to your existing Security Information and Event Management (SIEM) software, such as Splunk, to simplify and streamline security operations.

### Unlock the power of your activity data

Monitor makes it easy to view comprehensive account activity to identify trends. View results within Monitor or your preferred business intelligence tool like Tableau or Power BI.

#### Primary industries

Energy  
Education  
Financial Services  
Government  
Healthcare  
Insurance  
Life Sciences  
Real Estate  
Telecommunications

#### Account activities

Login attempts  
Password changes  
Recovery email updates  
Account settings  
Security settings  
Permission settings  
Account invitations  
Account links  
User-group updates  
Envelope deletions  
Envelope downloads  
Envelope transfers  
...Many more

---

## Ready for the next step?

Talk to your DocuSign Sales representative about a demo of DocuSign Monitor.

---

#### About DocuSign

DocuSign helps organisations connect and automate how they prepare, sign, act on and manage agreements. As part of the DocuSign Agreement Cloud, DocuSign offers eSignature: the world's #1 way to sign electronically on practically any device, from almost anywhere, at any time. Today, more than 750,000 customers and hundreds of millions of users in over 180 countries use DocuSign to accelerate the process of doing business and to simplify people's lives.

#### DocuSign, Inc.

Broadgate Quarter9 Appold  
Street, 2nd Floor  
London EC2A 2AP UK

[docusign.co.uk](https://docusign.co.uk)

#### For more information

[emea@docusign.com](mailto:emea@docusign.com)  
+44 203 714 4800