

GLOBE BUILDING

LOBBY + LOWER LOBBY



Known for its natural lighting, interior wooden beams and arched windows, the Globe Building was designed by architect Alexander Chapoton in 1888 for the Globe Tobacco Company.

Exposed brick walls and vaulted ceilings complement the timber details, masonry and the seven-story sunlit atrium that helped land the Globe Building on the National Register of Historic Places list.

The intimate 2,500-square-foot lower lobby can host semi-private gatherings with up to 50 guests, film and photo shoots.



GLOBE BUILDING

LOBBY + LOWER LOBBY



**407 E. FORT ST.
DETROIT, MI 48226**



LOBBY: 849 SQ FT
LOWER LOBBY: 869 SQ FT



FULL CAPACITY:
• 50 strolling



AV CAPABILITIES:
• No existing AV equipment



FURNITURE:
• Limited soft seating
furniture is available



CATERING:
Please contact us for a full
list of preferred caterers.



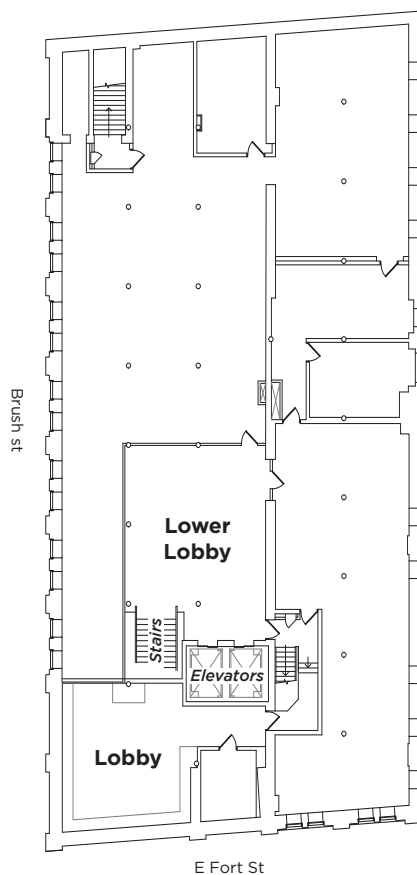
BEVERAGES:
Please contact us for
beverage provider.



PARKING:
• Self-parking



FLOOR PLAN:



FOR MORE INFORMATION:

(313) 373-8720

Venues@RockEvents.com

RockEventsDetroit