

Liberty® MSE

THE LIBERTY MSE SERIES BATTERY

For Standby Power Applications

CAPACITIES FROM 800 TO 1600 AMPERE-HOURS

The Liberty MSE features the latest battery technology in a space efficient, cost effective package. MSE technology provides for low operating float current and resulting unmatched operational life.



FEATURES & BENEFITS

APPLICATIONS

- Network Operation Centers
- Central Offices
- Manufacturing Facilities
- Emergency 911 Response Centers
- Industrial Process Controls
- Mobile Switching Centers
- Wireless Sites
- Wireline Sites
- Broadband Headend
- Microwave Sites
- Emergency Lighting Systems

ADVANCED SYSTEM FEATURES

- Modular design for ease of installation and stacking flexibility
- Reduced system hardware for rapid installation
- Space saving design for the greatest amount of power in a small footprint
- Meets IBC and UBC seismic requirements
- Tin-plated copper alloy connectors minimize maintenance
- Advanced micro-porous Absorbent Glass Mat separators for ultra low float current-reduces grid corrosion for a long, usable service life
- Proprietary calcium alloys to minimize positive grid corrosion and growth - maximizes battery life
- Robust polypropylene container and cover - enhances product quality and improves strength of materials for safe operation
- Flame retardant, UL94V0/28% LOI is optional
- Non-Spillable design is classified as non-hazardous for any mode of transportation (land, air and water)

- Highly efficient, proprietary plate processing for high utilization of active material - results in high energy density and low float current

ADVANCED PROCESSES

- Advanced formation process results in a narrow float voltage window making on-site float matching unnecessary
- Highly controlled manufacturing processes for exceptional and consistent performance

ADVANCED SERVICE LIFE & WARRANTY

- Proprietary cell design and manufacturing process provides for 20 year design life and documented long-lasting MSE technology service life

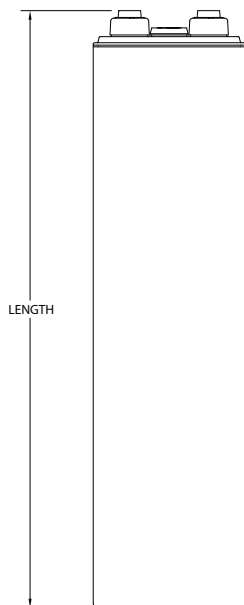
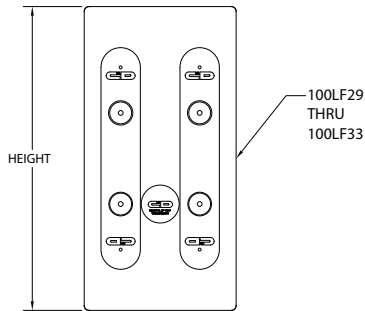
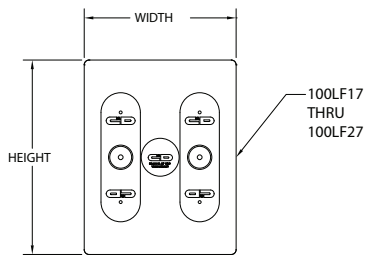
- Industry leading warranty

ADVANCED EXPERIENCE

- Over 100 years of experience in the battery industry
- The only producer and marketer of complete battery and electronics systems for total power solutions
- Fully backed by a worldwide network for local service

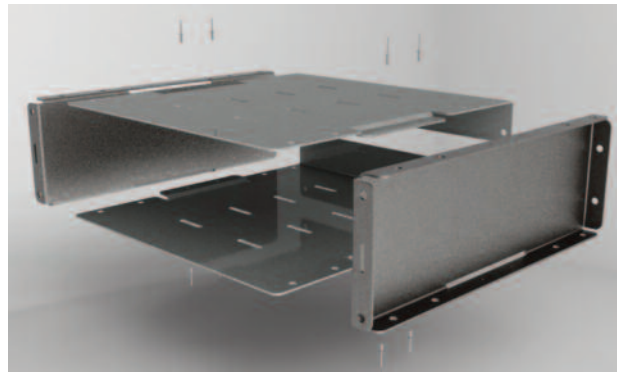
CELL SPECIFICATIONS

Voltage	1 cell, 2 VDC Nominal
Energy saving operating temperature	77°F (25°C)
Connection Torque:	Initial: 110 in-lbs (12.4 N-m) Retorque: 110 in-lbs (12.4 N-m)
Recommended float charging voltage	2.25 - 2.27 Volts per cell average @ 77°F (25°C)
Charger compensation temperature/voltage	- 2 mV/cell/°F above 77°F (-3.6 mV/cell/°C above 25°C) + 2 mV/cell/°F below 77°F (+3.6 mV/cell/°C below 25°C)

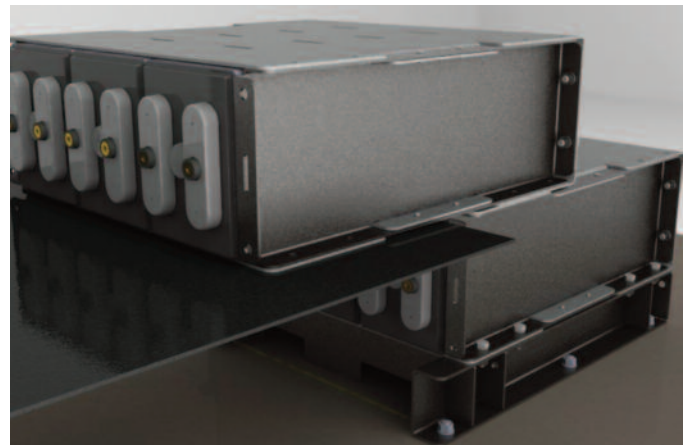


Individual Cell Dimensions (not including module)								
Liberty MSE Model	Height		Width		Length		Weight	
	inches	mm	inches	mm	inches	mm	lbs.	kg
100LF17	6.50	165.1	6.25	158.8	24.55	623.6	102.0	46.3
100LF19	7.25	184.2					114.0	51.7
100LF21	8.00	203.2					127.0	57.6
100LF23	8.75	222.3					139.0	63.0
100LF25	9.50	241.3					152.0	68.9
100LF27	10.25	260.4					164.0	74.4
100LF29	11.00	279.4					176.0	79.8
100LF31	11.75	298.5					189.0	85.7
100LF33	12.50	317.5					201.0	91.2

* Does not include module



Patented Riveted Module



Rapid System Assembly

PERFORMANCE SPECIFICATIONS

Amperes to 1.75 Final Volts Per Cell @25°C (77°F)

Model	1 HR	2 HR	3 HR	4 HR	5 HR	6 HR	7 HR	8 HR	10 HR	12 HR	24 HR
100LF17	392	269	208	170	144	126	111	100	83	71	39
100LF19	442	303	233	191	162	141	125	113	94	80	44
100LF21	491	337	259	212	180	157	139	125	104	89	48
100LF23	540	370	285	234	198	173	153	138	115	98	53
100LF25	589	404	311	255	216	188	167	150	125	107	58
100LF27	638	438	337	276	234	204	181	163	135	116	63
100LF29	687	471	363	297	252	220	195	175	146	125	68
100LF31	736	505	389	318	270	235	209	188	156	134	73
100LF33	785	539	415	340	288	251	223	200	167	143	77

You may also access the product ratings by logging onto the C&D Battery Sizing program at www.cdstandbypower.net

Amperes to 1.80 Final Volts Per Cell @25°C (77°F)

Model	1 HR	2 HR	3 HR	4 HR	5 HR	6 HR	7 HR	8 HR	10 HR	12 HR	24 HR
100LF17	359	254	198	163	139	122	108	97	82	71	38
100LF19	404	286	223	183	157	137	122	110	92	79	43
100LF21	449	317	247	204	174	152	135	122	102	88	48
100LF23	494	349	272	224	191	167	149	134	112	96	53
100LF25	539	381	297	245	209	182	163	146	122	105	58
100LF27	584	412	321	265	226	198	176	159	132	114	62
100LF29	629	444	346	285	244	213	189	171	143	123	67
100LF31	674	476	371	306	261	228	203	183	153	131	72
100LF33	718	508	396	326	278	243	216	195	163	140	77

You may also access the product ratings by logging onto the C&D Battery Sizing program at www.cdstandbypower.net

MODULE CONFIGURATIONS

MODULE TYPE	VOLTS	NOMINAL AH CAPACITY (8 HR)	STACKING DIMENSIONS						UNPACKED WEIGHT	
			WIDTH		HEIGHT		DEPTH		LBS	KGS
			IN	MM	IN	MM	IN	MM		
3 - 100LF17	6	800	21.91	557	6.88	175	26.25	667	368	167
3 - 100LF19	6	900	21.91	557	7.63	194	26.25	667	403	183
4 - 100LF21	8	1000	28.25	718	8.38	213	26.25	667	584	265
4 - 100LF23	8	1100	28.25	718	9.13	232	26.25	667	630	286
4 - 100LF25	8	1200	28.25	718	9.88	251	26.25	667	684	310
4 - 100LF27	8	1300	28.25	718	10.63	270	26.25	667	730	331
4 - 100LF29	8	1400	28.25	718	11.38	289	26.25	667	788	357
4 - 100LF31	8	1500	28.25	718	12.13	308	26.25	667	834	378
4 - 100LF33	8	1600	28.25	718	12.88	327	26.25	667	888	403

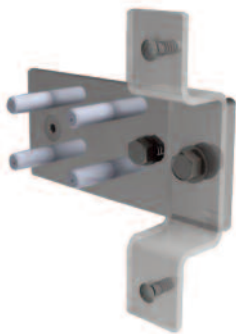
You may also access the complete product binder by logging onto the C&D Battery Sizing Program at www.cdstandbypower.net

SYSTEM CONFIGURATIONS

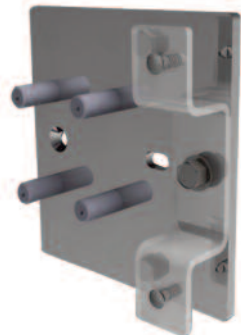
No. Cells/Module	Model No.	System Voltage	No. of Stacks	System Configuration	Total No. of Modules	8 Hour Rate to 1.75 VPC @ 77°F		Width		*Height		Depth		Weight	
						AH	Watts/Cell	in	mm	in	mm	in	mm	lbs	kgs
3	3-100LF17	24	1	3 X 4	4	800	197	21.91	557	32.02	813	26.38	670	1571	713
		48	1	3 X 8	8	800	197	21.91	557	59.54	1512	26.38	670	3091	1402
4	4-100LF17	24	1	4 X 3	3	800	197	28.25	718	25.14	639	26.38	670	1549	703
		48	1	4 X 6	6	800	197	28.25	718	45.78	1163	26.38	670	3040	1379
3	3-100LF19	24	1	3 X 4	4	900	222	21.91	557	35.02	890	26.38	670	1728	784
		48	1	3 X 8	8	900	222	21.91	557	65.54	1665	26.38	670	3405	1544
4	4-100LF19	24	1	4 X 3	3	900	222	28.25	718	27.39	696	26.38	670	1703	772
		48	1	4 X 6	6	900	222	28.25	718	50.28	1277	26.38	670	3349	1519
3	3-100LF21	24	1	3 X 4	4	1000	247	21.91	557	38.02	966	26.38	670	1884	855
		48	1	3 X 8	8	1000	247	21.91	557	71.54	1817	26.38	670	3718	1686
4	4-100LF21	24	1	4 X 3	3	1000	247	28.25	718	29.64	753	26.38	670	1858	843
		48	1	4 X 6	6	1000	247	28.25	718	54.78	1391	26.38	670	3658	1659
3	3-100LF23	24	1	3 X 4	4	1100	271	21.91	557	41.02	1042	26.38	670	2041	926
		48	1	3 X 8	8	1100	271	21.91	557	77.54	1970	26.38	670	4031	1828
4	4-100LF23	24	1	4 X 3	3	1100	271	28.25	718	31.89	810	26.38	670	2013	913
		48	1	4 X 6	6	1100	271	28.25	718	59.28	1506	26.38	670	3968	1800
3	3-100LF25	24	1	3 X 4	4	1200	296	21.91	557	44.02	1118	26.38	670	2197	997
		48	1	3 X 8	8	1200	296	21.91	557	83.54	2122	26.38	670	4344	1970
4	4-100LF25	24	1	4 X 3	3	1200	296	28.25	718	34.14	867	26.38	670	2167	983
		48	1	4 X 6	6	1200	296	28.25	718	63.78	1620	26.38	670	4277	1940
3	3-100LF27	24	1	3 X 4	4	1300	321	21.91	557	47.02	1194	26.38	670	2354	1068
		48	1	3 X 8	8	1300	321	21.91	557	94.04	2388	26.38	670	4708	2136
4	4-100LF27	24	1	4 X 3	3	1300	321	28.25	718	36.39	924	26.38	670	2322	1053
		48	1	4 X 6	6	1300	321	28.25	718	72.78	1848	26.38	670	4644	2106
3	3-100LF29	24	1	3 X 4	4	1400	345	21.91	557	50.02	1271	26.38	670	2511	1139
		48	1	3 X 8	8	1400	345	21.91	557	100.04	2542	26.38	670	5022	2278
4	4-100LF29	24	1	4 X 3	3	1400	345	28.25	718	38.64	981	26.38	670	2476	1123
		48	1	4 X 6	6	1400	345	28.25	718	77.28	1962	26.38	670	4952	2246
3	3-100LF31	24	1	3 X 4	4	1500	370	21.91	557	53.02	1347	26.38	670	2667	1210
		48	1	3 X 8	8	1500	370	21.91	557	106.04	2694	26.38	670	5334	2420
4	4-100LF31	24	1	4 X 3	3	1500	370	28.25	718	40.89	1039	26.38	670	2631	1193
		48	1	4 X 6	6	1500	370	28.25	718	81.78	2078	26.38	670	5262	2386
3	3-100LF33	24	1	3 X 4	4	1600	395	21.91	557	56.02	1423	26.38	670	2824	1281
		48	1	3 X 8	8	1600	395	21.91	557	112.04	2846	26.38	670	5648	2562
4	4-100LF33	24	1	4 X 3	3	1600	395	28.25	718	43.14	1096	26.38	670	2786	1264
		48	1	4 X 6	6	1600	395	28.25	718	86.28	2192	26.38	670	5572	2528

* Height does not include base. Typical base height is 4.0" (102mm).

Terminal Plates



For 100LF-17 through 100LF-27
(Cover removed for clarity)



For 100LF-29 through 100LF-33
(Cover removed for clarity)

Side Termination (optional)



For 100LF-17 through 100LF-33



Global Corporate Headquarters 200
Precision Rd. Horsham, PA19044 USA
customersvc@cdtechno.com
www.cdtechno.com

©2022 C&D Technologies Inc. Any data, descriptions or specifications presented herein are subject to revision by C&D Technologies, Inc. without notice. While such information is believed to be accurate as indicated herein, C&D Technologies, Inc. makes no warranty and hereby disclaims all warranties, express or implied, with regard to the accuracy or completeness of such information. Further, because the product(s) featured herein may be used under conditions beyond its control, C&D Technologies, Inc. hereby disclaims all warranties, either express or implied, concerning the fitness or suitability of such product(s) for any particular use or in any specific application or arising from any course of dealing or usage of trade. The user is solely responsible for determining the suitability of the product(s) featured herein for user's intended purpose and in user's specific application.

Copyright 2022 C&D TECHNOLOGIES, INC. Printed in U.S.A. 12-1078 0412/CD