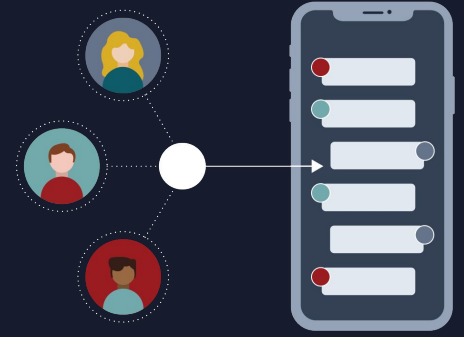


## Manage users, data, and more

Gain real-time visibility and influence on your app through an intuitive, no-code interface



BizOps Workspace is a collection of intuitive, no-code tools that empower BizOps Professionals to manage users and data in PubNub. It lets you gain real-time visibility into your app, influence its behavior, troubleshoot or manage its components, and keep users safe and engaged.



**Streamline business operations.** Influence your app's behavior by updating user/device, channel, and channel membership properties.



**Provide exceptional user experience.** Keep your community safe and engaged with content editing, bans, and moderator messages.



**Save expensive development time.** Gain real-time visibility and influence on your app without involving engineers or building admin tools.

“

*“Being able to have that reliability allows us to focus on building a great user experience without having to scale every single part of our infrastructure.”*

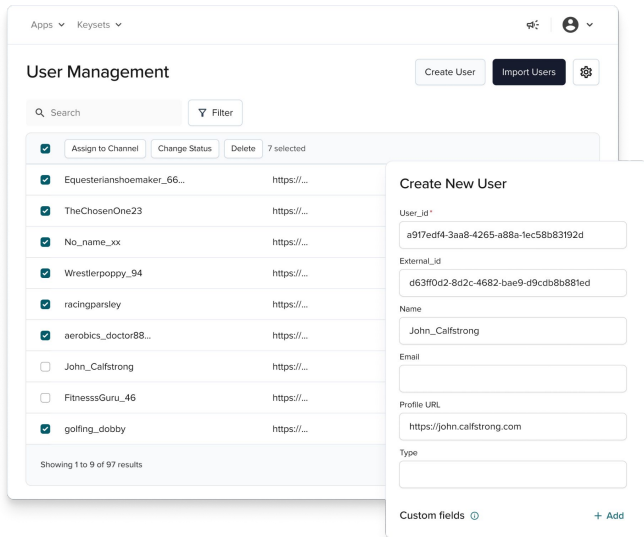
— Kyle Heller  
Co-Founder and CPO, Veeps

### Use Cases

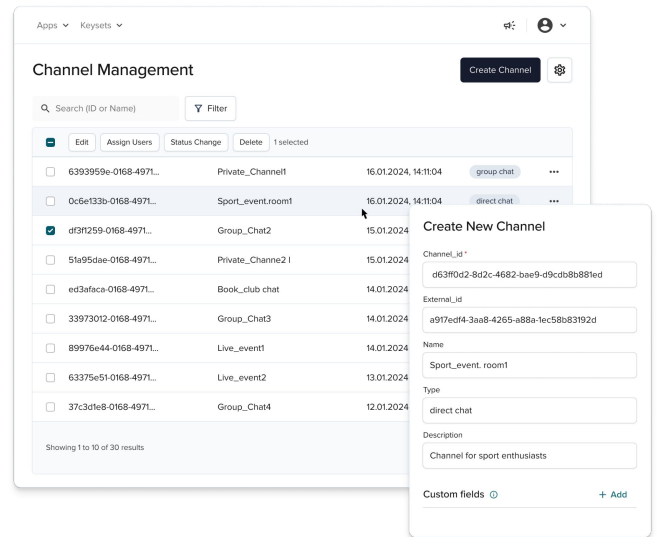
- **Operations Managers** – Update channel subjects, enable coupon codes and add vendors to the "allowed" list
- **Support Personnel** – Provide upgrades, troubleshoot and resolve data discrepancies, and remotely manage IoT devices
- **Content Moderators** – Keep communities safe and engaged by blocking spam, profanity, and negativity
- **Product Owners** – Join live channels to assess user satisfaction with new features or view user location data to gauge the effectiveness of regional campaigns
- **Developers** – Validate the accuracy of data such as channel memberships or user scores

TRUSTED BY LEADING BRANDS ACROSS THE GLOBE

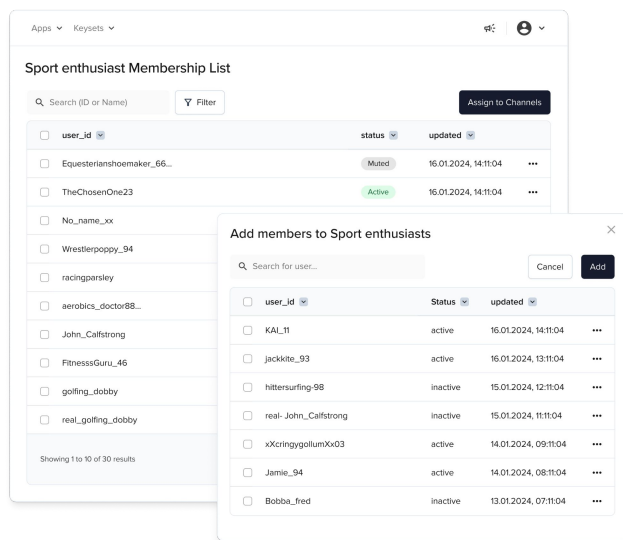




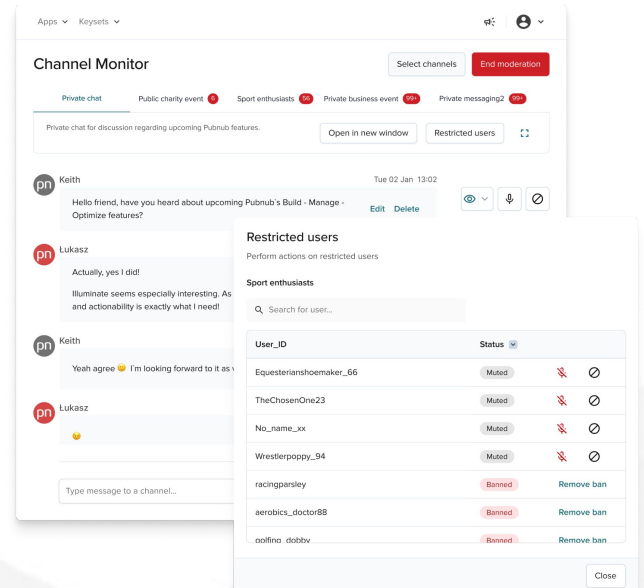
**User Management** – Manage users or devices



**Channel Management** – Manage channels or rooms



**Membership Management** – Manage the relationships between users and channels



**Channel Monitor** – Monitor and moderate messages

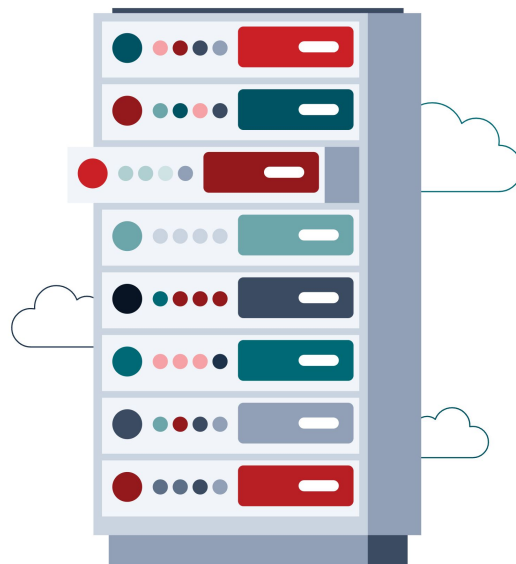
Want to learn more about how PubNub can help you build, manage, and optimize your app?

[Get in touch with our team.](#)

# Level up other PubNub services & tools with BizOps Workspace

## BizOps Workspace is powered by App Context!

- PubNub's [App Context](#) is a powerful way to keep the state of your real-time app in user/device, channel, and membership metadata objects.
- App Context triggers instant, real-time events when any object's values change, so your apps can automatically update regardless of scale.
- BizOps Workspace allows you to search, view, and update the objects in App Context, providing an easy, no-code way to manage your app.



## Enhance BizOps Workspace moderation experience with Chat SDK

- PubNub's [Chat SDK](#) provides out-of-the-box chat features like read receipts, @mentions, and unread message counts that can be easily integrated with your UI.
- It's an easy way for developers to create new chat applications or add chat features to existing applications, reducing the time needed to develop a custom chat experience.
- When used with Chat SDK, BizOps Workspace allows you to watch, mute, and ban users, view and reply to threads, write moderator messages, and more!

Want to learn more about how PubNub can help you build, manage, and optimize your app?

[Get in touch with our team.](#)

## Why engineering and operations teams love PubNub

Our Edge Messaging network provides massive scale for event-driven applications.

- [50+ SDKs](#)
- <100ms latency
- 99.999% uptime SLA
- [65+ pre-built integrations](#)
- [ISO 27001, SOC 2 Type II, GDPR, and HIPAA compliant](#)
- 24x7 technical support
- Free for POC development
- Global replicated PoPs
- Architecture reviews
- Supports millions of concurrent users

## Why business operations teams love PubNub

Our advanced technology manages the backend infrastructure (and headaches) for you.

- [PubNub Insights](#) allows you to view turnkey analytics based on your messages, users, and channels
- **Analyze with AI** scans your data and generates natural language analysis tailored to your specific queries
- Over **60 patent claims** granted
- Runs on a [global, replicated edge messaging network](#) for massive redundancy
- Can lock data to specific regions for [regulatory compliance](#)
- [Functions](#) to run your code within our network or leverage existing integrations to transform, re-route, augment, filter, or aggregate messages
- **Zero-trust** security model
- **Automatic routing** to nearest PoP (similar to CDN) means low-latency for all users, regardless of location
- **PoPs synchronize so all users** get a single combined experience
- **Message “catch-up”** for unreliable connectivity environments
- [PubNub Access Manager](#) to protect your app with with a cryptographic, token-based permission administrator as well as regulate clients' access to PubNub resources, such as channels, channel groups, and User IDs
- **Auto message bundling** for performance on devices with slow connections

---

Over 2000 companies worldwide choose PubNub because we provide a comprehensive set of core building blocks to easily create interactive and connected experiences that are secure, scalable, and reliable. Looking to learn more about building with PubNub? [Get in touch with our team.](#)