

**Directions from  
Buona Vista  
MRT station to  
Synapse**

The map displays a blue route starting from One North Station (CC23) and ending at Synapse. The route passes through several key locations, including Starbucks, Ministry of Education, Matrix, and Genome Institute. The map also shows surrounding areas like District 10, Buona Vista, and One North Park. The route is marked with a blue line and a red pin at the destination, Synapse.

- 1) Take the East West Line and alight at **Buona Vista MRT Station (EW21)**
- 2) Head towards **Exit D** and turn left once you exit the station.



3) In front, there will be a sign **24hr link to Biopolis** on the overhead. Follow the path to the end of the building.



4) Near the end of the building, you will see the **Tower 2**, turn left after it.



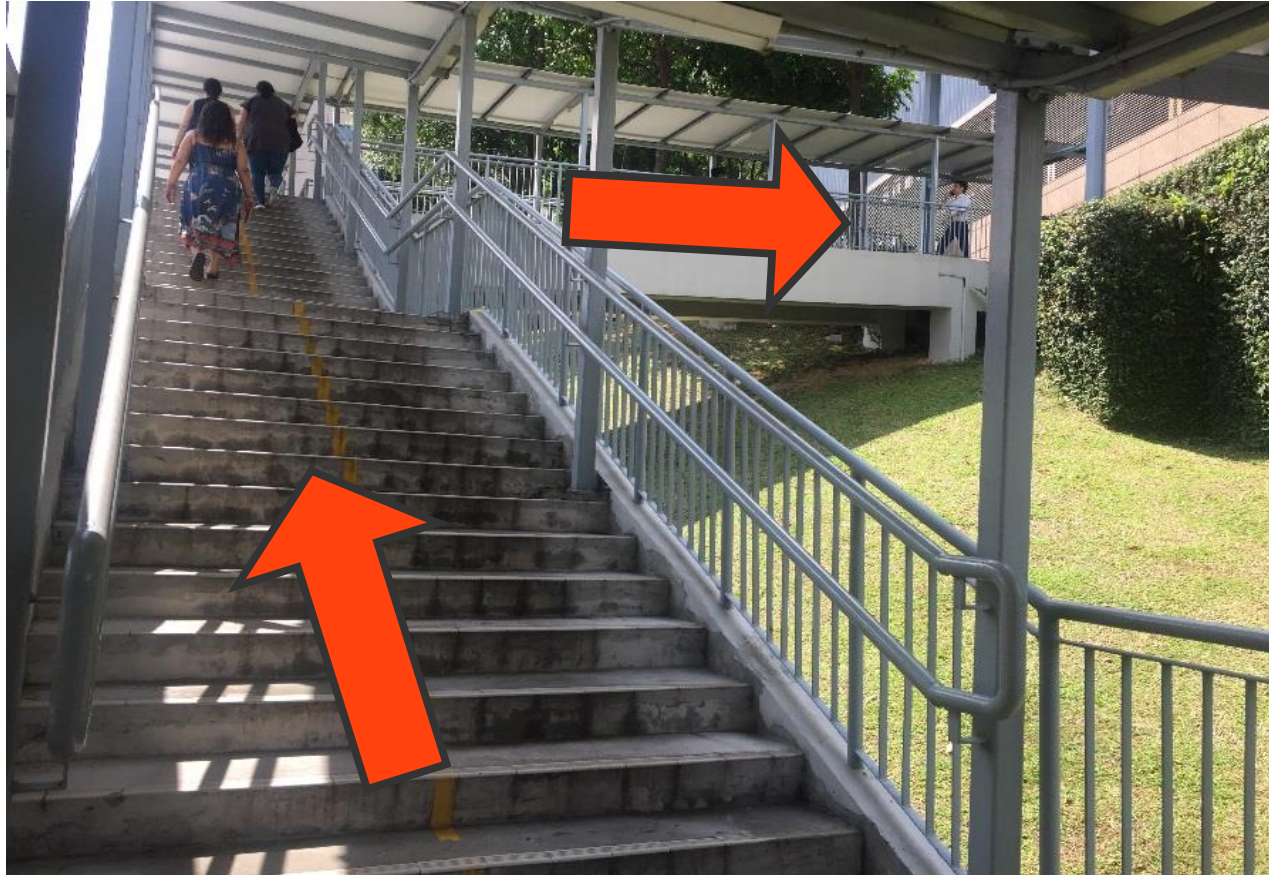
5) Go up the escalator.



6) Proceed along the overhead bridge towards **Biopolis**.



7) Ascend the flight of stairs/slope at the end of the overhead bridge.



8) At the top of the overhead bridge, turn left and you will see NANOS ahead of you.



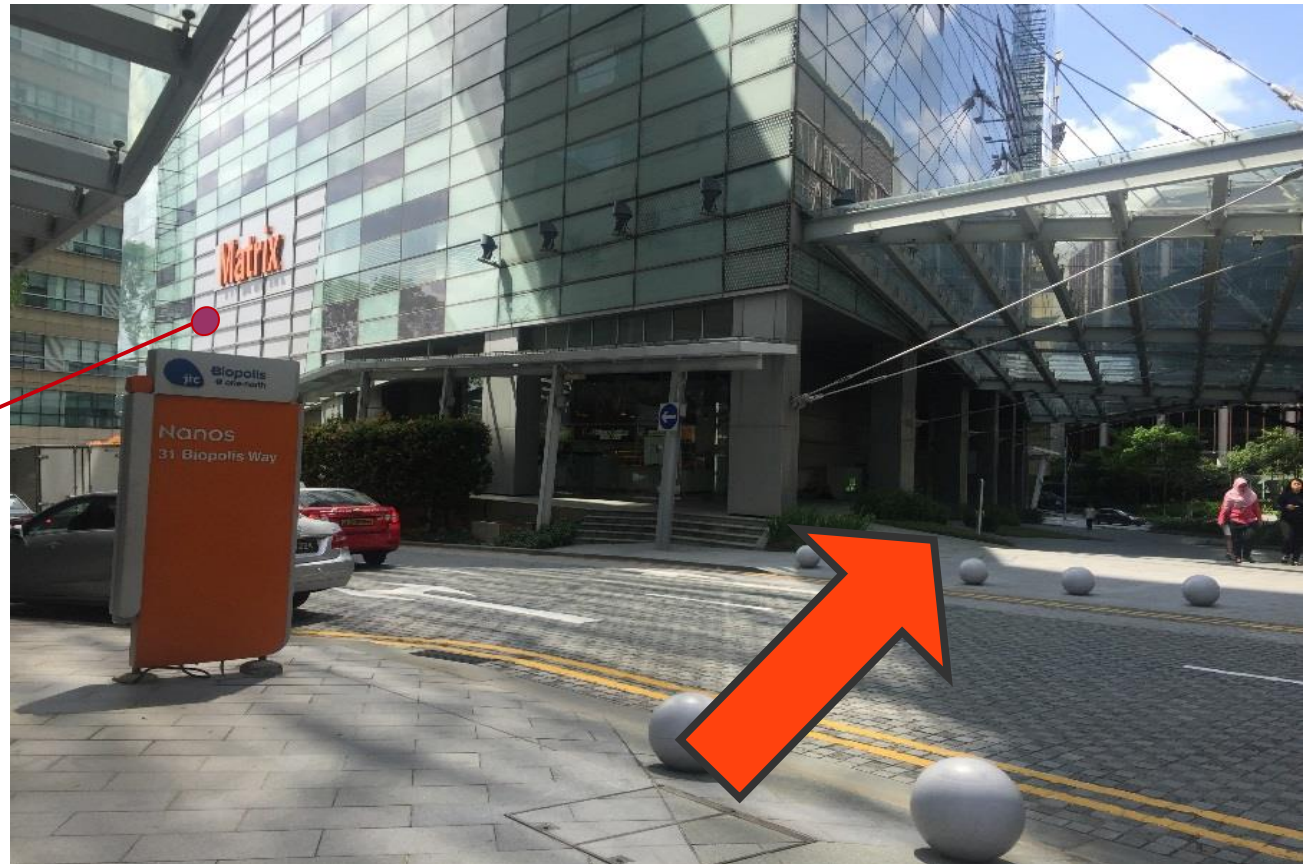
9) Walk towards NANOS and you will see Lemon Laundry on your right. Turn right after Lemon Laundry and walk along the Fountain/Garden feature (as seen below).



10) At the end of Fountain/Garden Feature, cross the street to MATRIX building and walk along the building.



MATRIX



11) At the end of MATRIX building is Meal box. Turn left after Meal Box.



12) Walk along the building until you reach the junction, then cross over to **PROTEOS** building.



13) Turn right and cross the junction to get to Neuros building. Continue walking straight along NEUROS building.

NEUROS

NEUROS



14) At **SYNAPSE**, take the ground floor escalator up to the 2<sup>nd</sup> level and you have arrived at Lilly Centre!

