



Course Overview

POET is a three-day cyber foundational course designed for cleared industry personnel, military members, and government civilians tasked with supporting control systems, embedded assets, and critical infrastructure. It establishes a functional baseline for reverse engineering within the Cyber-Physical Systems (CPS) domain, providing the technical framework necessary for further specialization.

Guided by our expert instructors, participants will gain hands-on experience identifying, disassembling, and interpreting software binaries using industry-standard tools like Ghidra. The curriculum moves beyond the OS level to analyze the physical layer, examining electronic components, firmware architectures, and the communication interfaces that link embedded peripherals within a CPS environment. Finally, you will use diagnostic instruments to observe and verify real-time electronic behavior.

Born out of necessity after dissatisfaction with available cyber training, POET delivers operator-in-the-loop training, advisory, and consulting support in technology, engineering, and cybersecurity, designed by defense experts and entrepreneurs in defense tech. This course is purpose-built to uplift current defense training with modules that build foundational understanding of technology design at the OS level.

Participants receive a formal course certificate supporting DoW and DIB qualification pathways upon completion.

Course Sequence

The POET curriculum is structured as a progressive ladder, where each level removes specific failure modes and prepares analysts for increasingly advanced offensive operations.

POET 100 - Foundations:

Basic embedded familiarity, tooling exposure, and firmware awareness

POET 200 - Analyst Discipline:

Evidence handling, ambiguity tolerance, and toll control that prevent exploitation failure

POET 300 - Architecture & Exploitation:

Flash extraction, execution reconstruction, and architecture-driven exploitation

Each level is intentionally incomplete on its own. Capability emerges from progression, not from skipping levels.

Who Should Attend?

- ∞ Defense Contractor
- ∞ DIB Technical SMEs
- ∞ OT and Control Systems Engineers
- ∞ Military and Government Cyber Personnel
- ∞ Cybersecurity professionals expanding into ICS/SCADA exploration

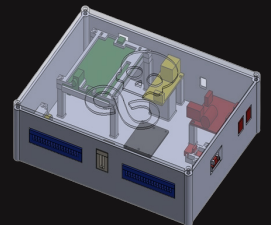
Designed for technical practitioners with foundational knowledge in:

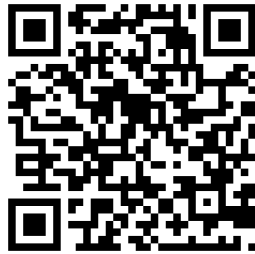
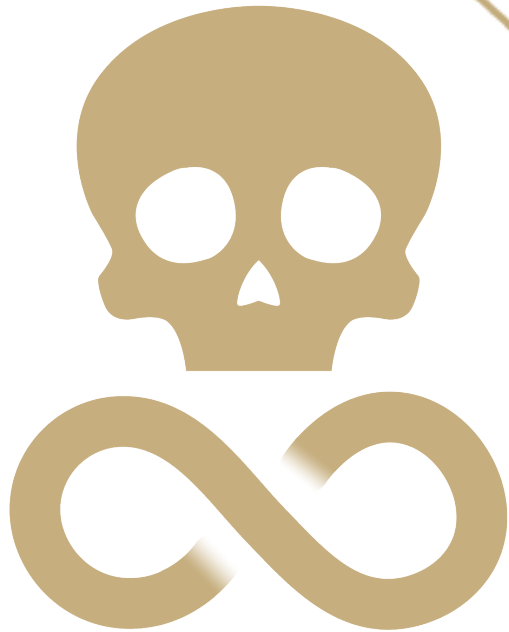
- ∞ Cybersecurity
- ∞ Network engineering
- ∞ Operational technology

Optional Add-On: Take Home Kit

Included Components

- Core Embedded Testbed Unit
- Patch Panel Interface
- Wiring Harness Kit
- I2C EEPROM Expansion Module
- SPI Flash Expansion Module
- Developer Quick Start Guide





**Sign Up For The
POET Course
Here**



**More About POET
& Our Additional
Cyber Capabilities
& Services**