

Safe. Simple. Effective.

FABRIC CARE



# Fairy Non-Bio Professional Powder

## Laundry detergent - powder

Tough on stains, gentle next to guests' skins

### 🎯 KEY BENEFITS

- Outstanding cleaning
- Helps remove make-up & body soils
- Dermatologically tested
- With anti-residue technology to help prevent powder residues on fabric and minimize rewash
- Voted #1 laundry for sensitive skin\*



\*Online panel of 7,413 adults in GB aged 16+ among which Fairy Non Bio laundry products were voted most often as the #1 laundry brand for sensitive skin.

Safe. Simple. Effective.



FABRIC CARE / FAIRY NON-BIO PROFESSIONAL POWDER

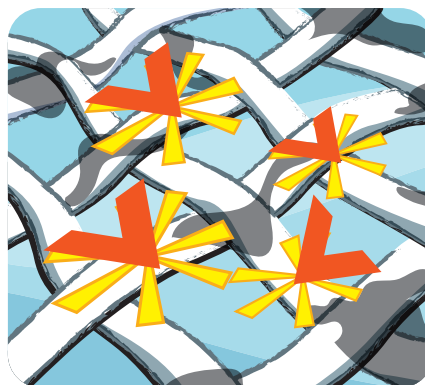
TECHNOLOGY

Fairy Non-Bio Professional Powder stain removal technologies

Fairy Non-Bio Professional Powder technologies act in synergy to ensure the removal of the tough stains professionals face on a daily basis.



Its **multi-enzyme** system breaks different kinds of stains into smaller pieces.



The **multi-surfactants** system dissolves and removes pieces of stain which are then rinsed away.

TECHNICAL DESCRIPTION

EAN code:	
Appearance:	white powder with blue speckles
Smell:	Pleasant
pH:	10.9 (at 1% solution)
Water solubility	Soluble
Size	

WHERE TO USE

- Safe to use on all types of white and colored textiles.
- Can be used at wash temperatures from 20°C till 95°C. Always follow the wash instructions as mentioned on the fabric label.
- Can be used at all water hardness. Adjust the dosage according to your local water hardness as recommended in the dosing instructions.

WHERE NOT TO USE

- Cannot be used for wool & silk textiles.

SAFETY INSTRUCTIONS

Please make sure your employees read and understood the product label and your COSHH assessment (Chemical Risk Assessment in EU) before using this product. The label contains directions for use and both label and SDS contain hazard warnings, precautionary statements, first aid procedures and storage information. SDS are available on-line at our website [www.pgpro-msds.com](http://www.pgpro-msds.com) or can be provided to you via the call center (+33-XXX-XXXX).

PROTOCOL OF USE

**20°C → 95°C**

1

85 ml  
= +/- 55g

---

2

6-8 kg	85 ml	155 ml	225 ml
9+ kg	155 ml	225 ml	295 ml

4-5 kg	85 ml		
		/ + 45 ml	

3

\*Soft water / Medium water    \*\*Hard water